

ISSUE/REVISION RECORD	DATE	DESCRIPTION

Racetrac
 RACETRAC PETROLEUM, INC.
 3225 CUMBERLAND BOULEVARD
 SUITE 100
 ATLANTA, GEORGIA 30339
 (770) 431-7900

PROJECT NAME
HWY 316 @ 81

**BETHLEHEM
 GEORGIA
 839 LOGANVILLE HWY**

RACETRAC PROJECT NUMBER
1304

PLAN SERIES
2011 BR-RH-M90 0801

PLAN MODIFICATION NOTICE

NO MODIFICATIONS APPLIED
 MODIFICATIONS APPLY

SPB NO. N/A DATE N/A

STANDARD PLAN BULLETINS (SPB) MODIFY THE PLAN SERIES SET NOTED ABOVE. THE SPB GIVEN ABOVE REPRESENTS THE LATEST MODIFICATION INCORPORATED TO THIS PLAN SERIES SET. CONTACT RACETRAC ENGINEERING AND CONSTRUCTION FOR ALL BULLETINS.

PROFESSIONAL SEAL



RICHARD R. MORRIS
 GA REG # PE013997

PROJECT NUMBER
18213

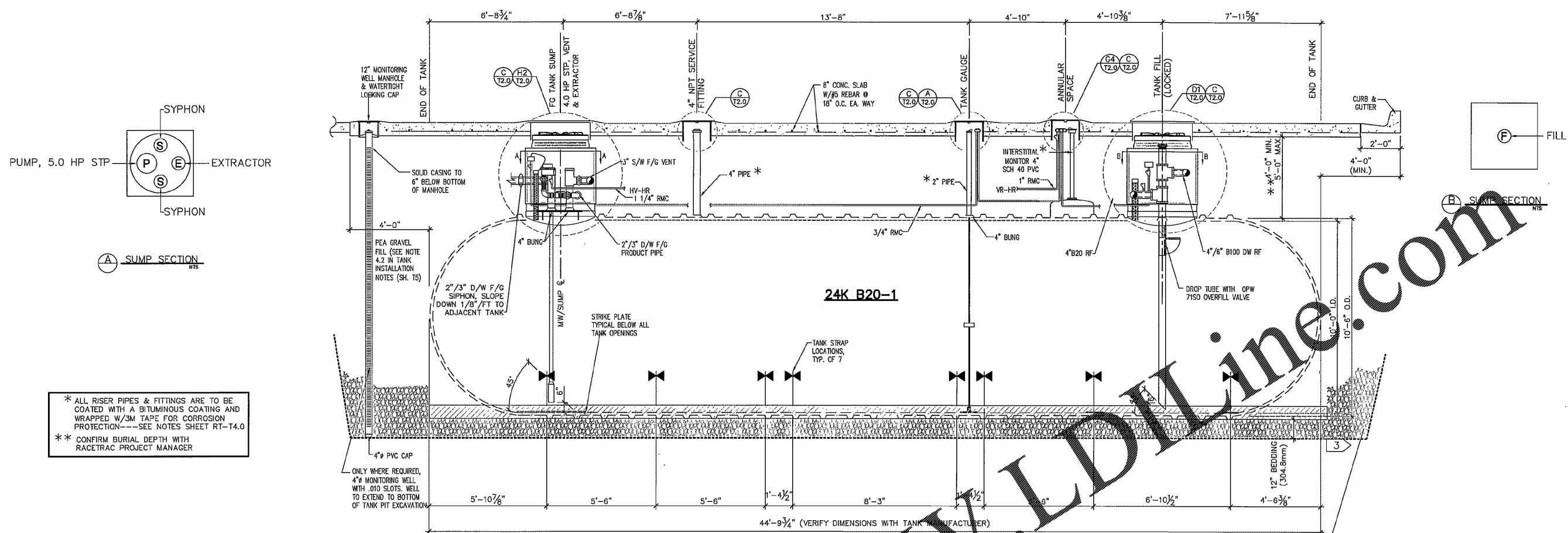
SHEET TITLE

U/G TANK SECTIONS

SHEET NUMBER

RT-T1.5

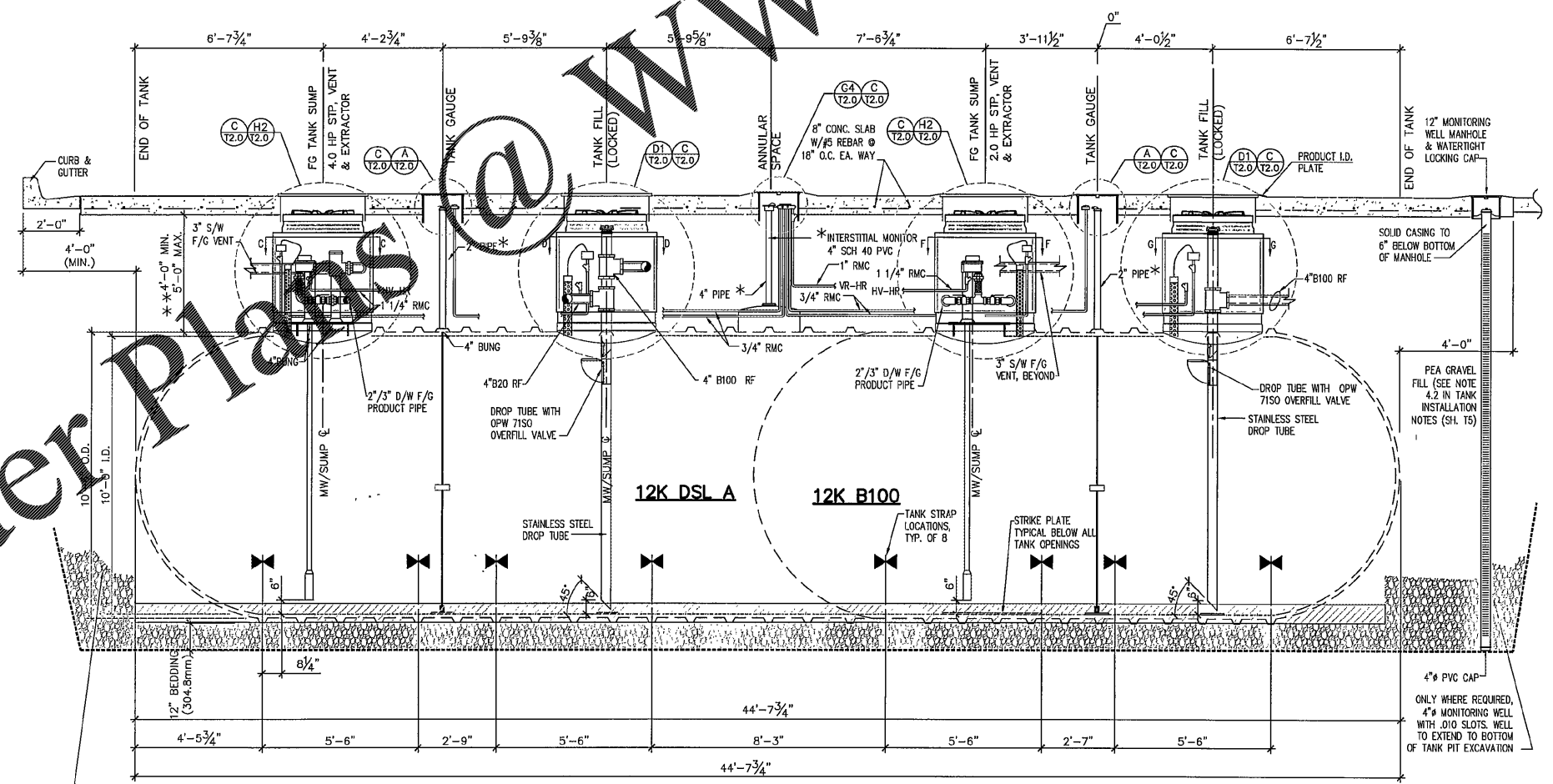
ISSUED FOR CONSTRUCTION



(C) LONGITUDINAL TANK SECTION
T1.0
 24,000 GALLON TANK
 3/8" = 1'-0"

EXCAVATION TO BE BENCHED IN ACCORDANCE WITH OSHA 29 CFR 1926-950(P) METHOD OF COMPLIANCE TO BE DETERMINED BY CONTRACTOR

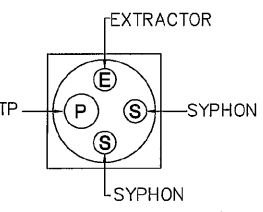
* ALL RISER PIPES & FITTINGS ARE TO BE COATED WITH A BITUMINOUS COATING AND WRAPPED W/3M TAPE FOR CORROSION PROTECTION---SEE NOTES SHEET RT-T4.0
 ** CONFIRM BURIAL DEPTH WITH RACETRAC PROJECT MANAGER



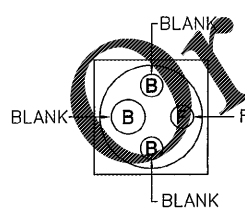
(D) LONGITUDINAL TANK SECTION
T1.0
 24,000 GALLON TANK
 3/8" = 1'-0"

EXCAVATION TO BE BENCHED IN ACCORDANCE WITH OSHA 29 CFR 1926-950(P) METHOD OF COMPLIANCE TO BE DETERMINED BY CONTRACTOR

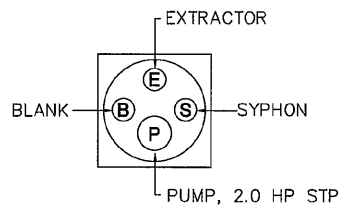
ONLY WHERE REQUIRED, 4\"/>



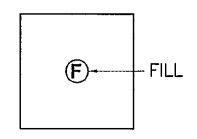
(C) SUMP SECTION
 NTS



(D) SUMP SECTION
 NTS



(F) SUMP SECTION
 NTS



(F) SUMP SECTION
 NTS

Order Plans @ WWW.IDLine.com

WWW.IDLine.com