

CONDUIT NOTES:

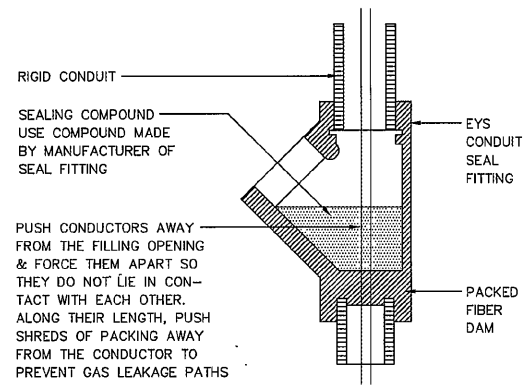
1. DO NOT EXCEED 360° IN TOTAL BENDS FOR CONDUIT HOMERUNS PER NEC 344.26.
2. CONDUIT FOR STP POWER TO BE RUN IN RMC ALL THE WAY FROM THE BUILDING. DO NOT USE PVC. PVC MAY BE USED PER NEC 514, EXCEPTION NO. 2 FOR VEEDER-ROOT HOMERUNS, DISPENSER POWER HOMERUNS, DISPENSER INTERCOM HOMERUNS, DISPENSER SPARE HOMERUNS AND DISPENSER FUTURE HOMERUNS.
3. ALL CONDUIT LOOPS FOR TANKS AND AND DISPENSERS TO BE RMC. DO NOT USE PVC.
4. INSTALL A SEAL-OFF FITTING ON ALL CONDUITS THAT ENTER AND LEAVE A STP SUMPS, TRANSITION SUMPS AND DISPENSER SUMPS.
5. CONDUIT FILL SHALL NOT EXCEED 25% OF SEAL-OFF FITTING PER NEC 501.15(c)(6).

EMERGENCY FUEL SHUT-OFF NOTES:

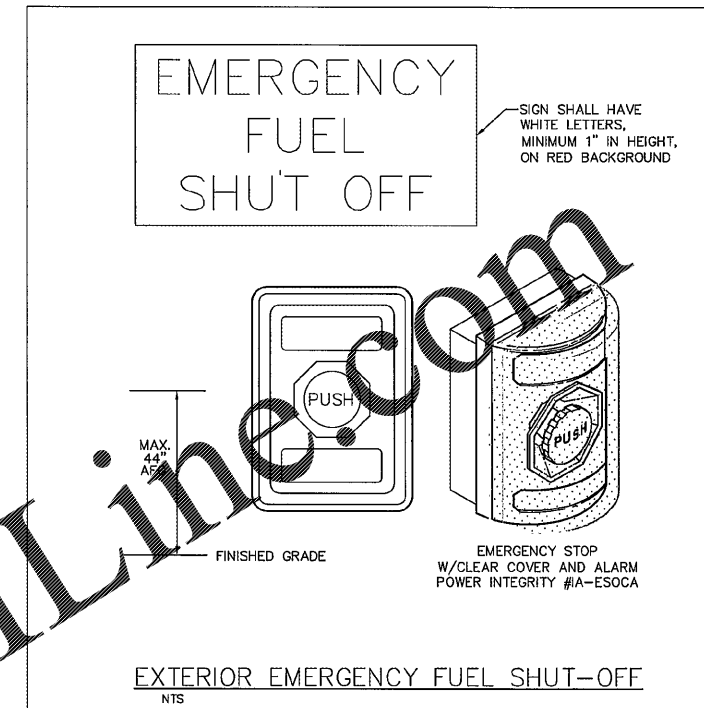
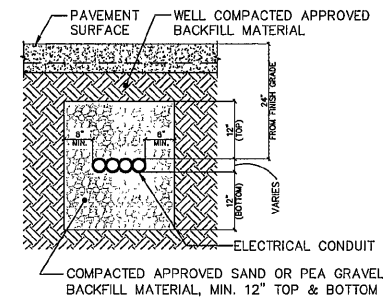
1. INSTALL NFPA 30A, 6.7 REMOTE E-STOPS AT CASHIER/ATTENDANT AND WITH-IN 100FT OF DISPENSERS, SEE SITING LAYOUT SHEET RT-T0.0

VEEDER-ROOT AND OVERFILL ALARM NOTES:

1. ALL VEEDER-ROOT CONDUITS FOR TANK GAUGE, INTERSTITIAL AND SUMP SENSORS TO RUN DIRECTLY TO INTRINSICALLY SAFE VEEDER-ROOT GUTTER LOCATED INSIDE BUILDING.
2. VEEDER-ROOT CONSOLE POWER, PLD POWER AND RELAY WIRES TO RUN IN AN ISOLATED, SEPARATE CONDUIT.
3. INTRINSICALLY SAFE VEEDER-ROOT TANK GAUGE AND LEAK DETECTION CABLES TO BE "BELDEN" #88760, 18 GAUGE, 300 VOLT SHIELDED 1-PAIR CABLE.
4. INTRINSICALLY SAFE VEEDER-ROOT TANK GAUGE AND LEAK DETECTION CABLES TO BE INSTALLED IN SEPARATE CONDUIT WITH A #12 THWN GREEN GROUND WIRE. TERMINATE GROUND WIRE AT APPLETON J-BOX(S) AND/OR BUILDING INTRINSICALLY SAFE VEEDER-ROOT GUTTER AS OCCURS.
5. INTERCOM CABLES TO BE "BELDEN" #88723, 22 GAUGE, 300 VOLT SHIELDED 2-PAIR CABLE.
6. ALL TANK FARM AND DISPENSER HOMERUN CONDUITS TO BE PVC. THE LAST 10' ON BOTH ENDS OF CONDUIT RUN TO BE RMC (RIGID METAL CONDUIT). VEEDER-ROOT TANK FARM CONDUIT LOOPS BETWEEN TANK GAUGE, ANNULAR SPACE, STP SUMPS AND PIPING SUMPS TO BE RMC.
7. ALL TANK FARM, DISPENSER AND SUMP HOMERUN CONDUITS TO HAVE SEAL-OFFS INSTALLED AT BOTH ENDS OF THE RUN. DISPENSER VEEDER-ROOT CONDUIT LOOPS TO BE RMC AND HAVE A SEAL-OFF ON BOTH ENDS. ALL VEEDER-ROOT CONDUIT LOOPS THAT PENETRATE STP AND TRANSITION SUMPS TO HAVE SEAL-OFFS.
8. INSTALL (1) APPLETON GRSS-75 J-BOX AT EACH DISPENSER FOR VEEDER-ROOT CONDUIT LOOPS.
9. VEEDER ROOT OVERFILL ALARM IS PRIMARY OVERFILL PROTECTION SOURCE.



NOTE: SEAL-OFFS TO BE INSTALLED PER NEC 514.3 AND NEC 514.9(A)&(B)



(HR-HV) ONE 3/4" DISP. HOMERUN POWER CONDUIT FROM BUILDING TO EACH DISP. - SEE BLDG. ELEC.
(HR-LV) ONE 3/4" DISP. HOMERUN INTERCOM CONDUIT FROM BUILDING TO EACH DISP. - SEE BLDG. ELEC.
(HR-SP) ONE 3/4" DISP. HOMERUN SPARE CONDUIT FROM BUILDING TO EACH DISP. - SEE BLDG. ELEC.

(HR-FU) ONE 1" DISP. HOMERUN FUTURE CONDUIT FROM BUILDING TO ONE DISP.
(LOOP-FU) LOOP 3/4" CONDUIT FROM DISP. TO DISP. FOR FUTURE. - SEE BLDG. ELEC.

(HR-VR) ONE 1" DISP. HOMERUN VEEDER-ROOT CONDUIT FROM BUILDING TO ONE DISP.
(LOOP-VR) LOOP 3/4" CONDUIT FROM DISP. TO DISP. FOR VEEDER-ROOT. - SEE BLDG. ELEC.

DISPENSER CONDUITS MAY BE PVC PER NEC 514.8 EXCEPTION NO. 2

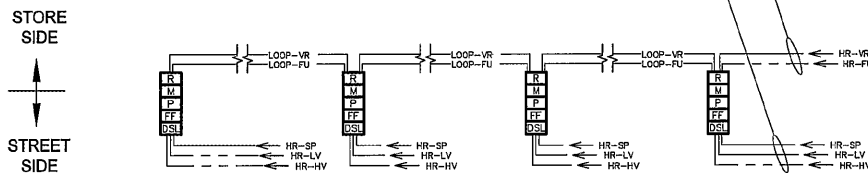
(HR-FU) ONE 1" DISP. HOMERUN FUTURE CONDUIT FROM BUILDING TO ONE DISP.
(LOOP-FU) LOOP 3/4" CONDUIT FROM DISP. TO DISP. FOR FUTURE. - SEE BLDG. ELEC.

(HR-VR) ONE 1" DISP. HOMERUN VEEDER-ROOT CONDUIT FROM BUILDING TO ONE DISP.
(LOOP-VR) LOOP 3/4" CONDUIT FROM DISP. TO DISP. FOR VEEDER-ROOT. - SEE BLDG. ELEC.

DISPENSER CONDUITS MAY BE PVC PER NEC 514.8 EXCEPTION NO. 2

(HR-HV) ONE 3/4" DISP. HOMERUN POWER CONDUIT FROM BUILDING TO EACH DISP. - SEE BLDG. ELEC.

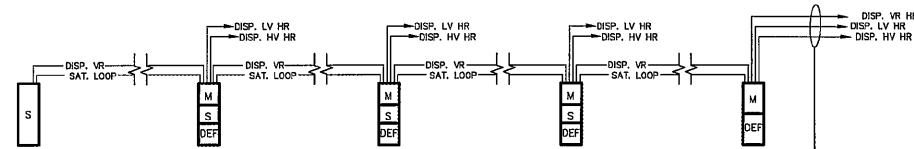
(HR-SP) ONE 3/4" DISP. HOMERUN SPARE CONDUIT FROM BUILDING TO EACH DISP. - SEE BLDG. ELEC.



DISPENSER LEGEND

HV	- DISPENSER POWER
LV	- DISPENSER INTERCOM
VR	- DISPENSER VEEDER-ROOT
SP	- DISPENSER SPARE
FU	- DISPENSER FUTURE USE
HR	- HOMERUN FROM BUILDING

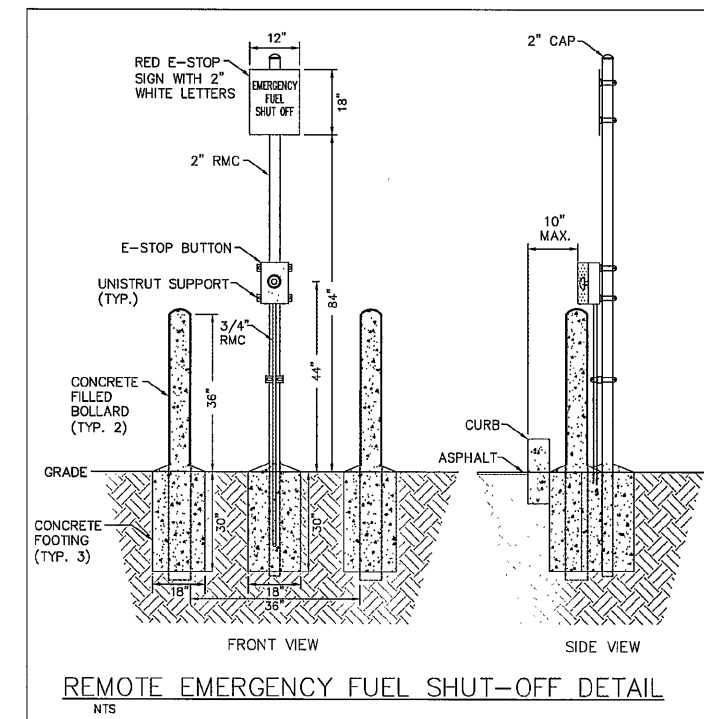
A AUTO DISPENSER LAYOUT / CONDUIT SCHEMATIC
NTS



-ONE 1" DISP. LV HOMERUN CONDUIT TO BUILDING FROM EACH DISPENSER FOR POWER - SEE BLDG. ELEC.
-ONE 1" DISP. HV HOMERUN CONDUIT TO BUILDING FROM EACH DISPENSER FOR INTERCOM - SEE BLDG. ELEC.
-ONE 1" DISP. VR HOMERUN CONDUIT TO BUILDING FROM TWO DISPENSERS FOR VEEDER ROOT - SEE BLDG. ELEC.
-DAISY CHAIN 3/4" FROM SUMP TO SUMP FOR VEEDER-ROOT
-ONE 3/4" SATELLITE LOOP BETWEEN EACH MASTER & SLAVE DISPENSER

DISPENSER CONDUITS MAY BE RMC/PVC PER NEC 514.8 EXCEPTION NO. 2

B TRUCK DISPENSER LAYOUT / CONDUIT SCHEMATIC
NTS



Racetrac
COPYRIGHT NOTICE
THESE PLANS ARE SUBJECT TO FEDERAL COPYRIGHT LAWS. ANY USE OF SAME WITHOUT THE EXPRESSED WRITTEN PERMISSION OF RACETRAC PETROLEUM, INC. IS PROHIBITED. 2011 RACETRAC PETROLEUM INC.

ISSUE/REVISION	RECORD	DATE	DESCRIPTION

Racetrac
RACETRAC PETROLEUM, INC.
3225 CUMBERLAND BOULEVARD
SUITE 100
ATLANTA, GEORGIA 30339
(770) 431-7600

PROJECT NAME
HWY 316 @ 81

BETHLEHEM GEORGIA
839 LOGANVILLE HWY

RACETRAC PROJECT NUMBER
1304

PLAN SERIES
2011 BR-RH-M90 0801

PLAN MODIFICATION NOTICE

NO MODIFICATIONS APPLIED
MODIFICATIONS APPLY

SPB NO. N/A DATE N/A

STANDARD PLAN BULLETINS (SPB) MODIFY THE PLAN SERIES SET NOTED ABOVE. THE SPB GIVEN ABOVE REPRESENTS THE LATEST MODIFICATION INCORPORATED TO THIS PLAN SERIES SET. CONTACT RACETRAC ENGINEERING AND CONSTRUCTION FOR ALL BULLETINS.

PROFESSIONAL SEAL



RICHARD R. MORRIS
GA REG # PE013997

PROJECT NUMBER
18213

SHEET TITLE
TRUCK FUELING ELECTRICAL PLAN

SHEET NUMBER
RT-T1.3

ISSUED FOR CONSTRUCTION

Order Plans @ WWW.LDILLINE.COM

DEC 1 3 2010