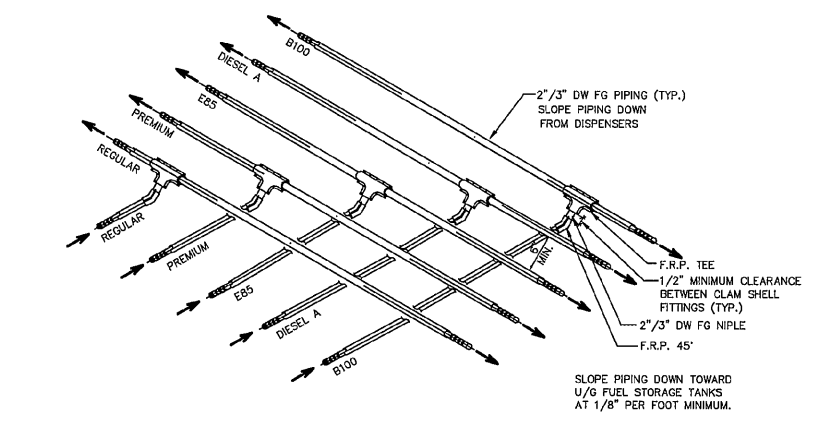


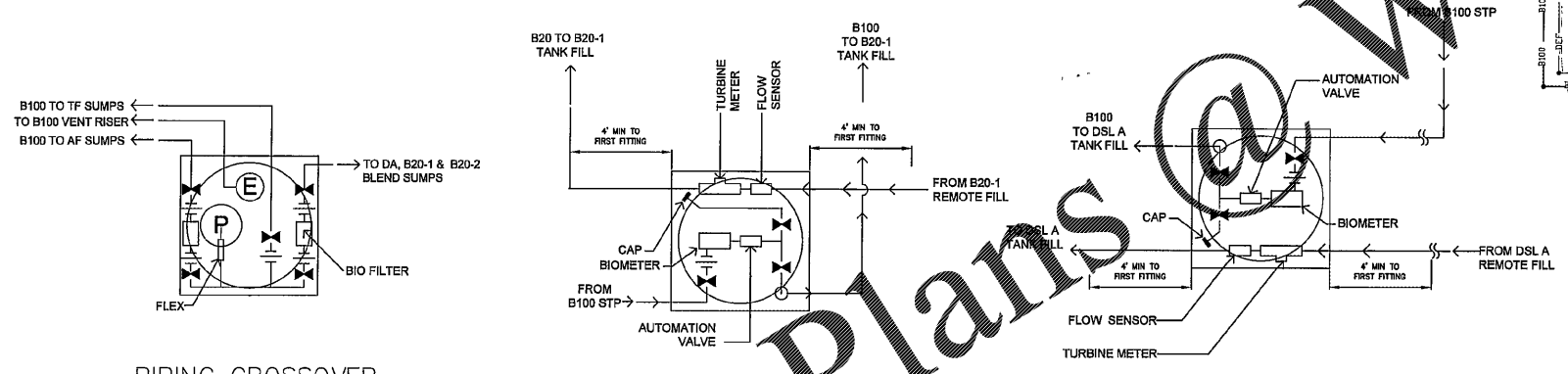
E PIPING CROSS @ TRANSITION SUMP
 T1 N.T.S.

F PIPING CROSS @ TRANSITION SUMP
 T1 N.T.S.



C1 PIPING CROSS UNDER ISOMETRIC DETAIL
 T1 N.T.S.

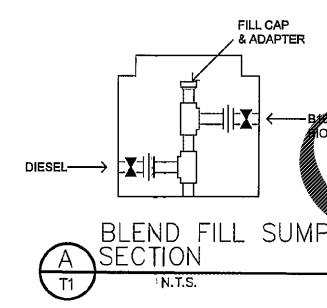
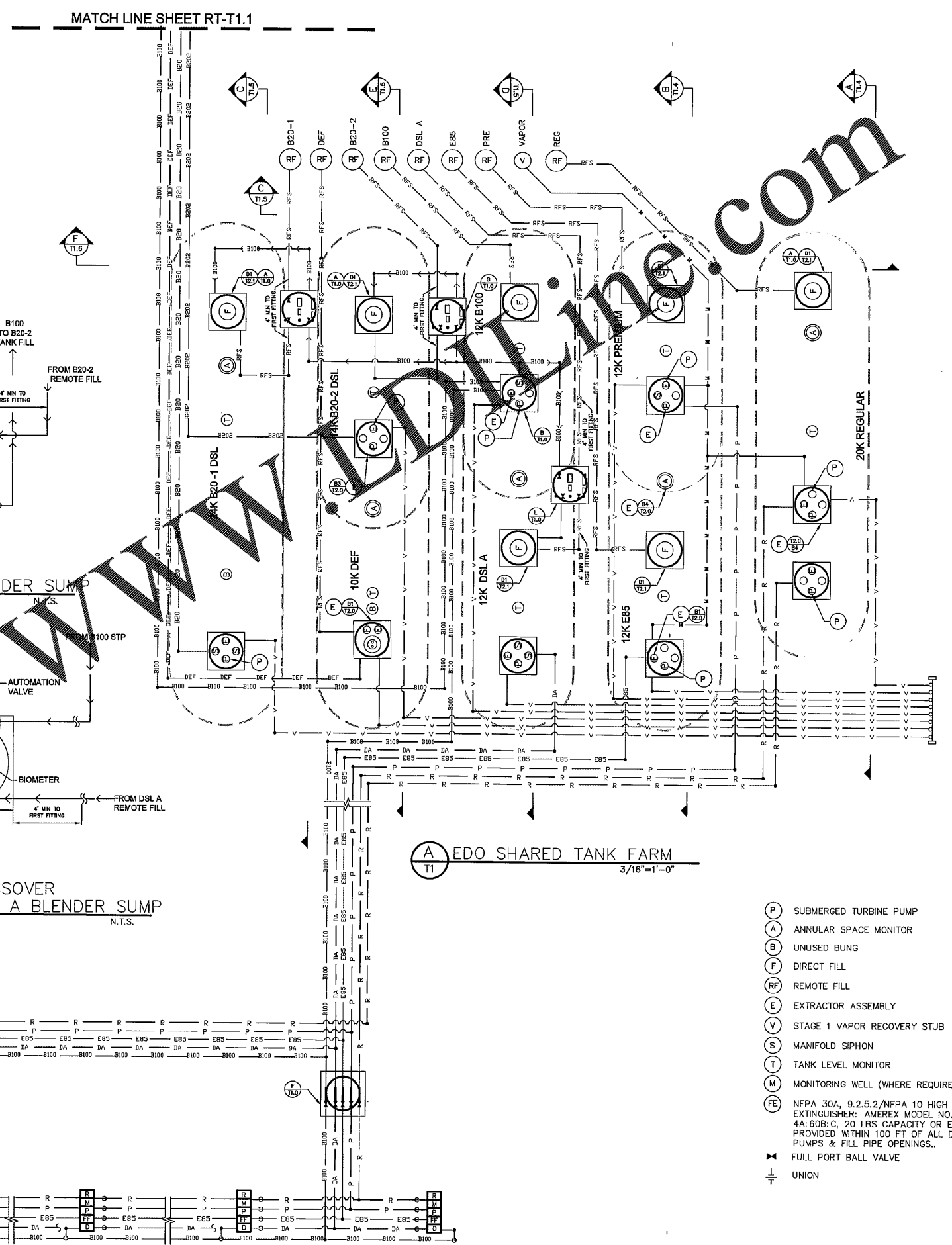
G PIPING CROSSOVER @ B100/B20-2 BLENDER SUMP
 T1 N.T.S.



B PIPING CROSSOVER @ B100 STP SUMP
 T1 N.T.S.

H PIPING CROSSOVER @ B100/B20-1 BLENDER SUMP
 T1 N.T.S.

L PIPING CROSSOVER @ B100/DSL A BLENDER SUMP
 T1 N.T.S.



A BLEND FILL SUMP SECTION
 T1 N.T.S.

TRANSITION SUMPS AS NEEDED TO ALIGN PRODUCT PIPING

PETROLEUM CONTRACTOR MUST PROVIDE AN ACCURATE, DETAILED AS-BUILT OF THE SYSTEM.

ALL PRODUCT PIPING TO BE SMITH RED THREAD IIA 2" / 3" DW FG D/W F/G, U.N.O.

- (P) SUBMERGED TURBINE PUMP
- (A) ANNULAR SPACE MONITOR
- (B) UNUSED BUNG
- (F) DIRECT FILL
- (RF) REMOTE FILL
- (E) EXTRACTOR ASSEMBLY
- (V) STAGE 1 VAPOR RECOVERY STUB
- (S) MANIFOLD SIPHON
- (T) TANK LEVEL MONITOR
- (M) MONITORING WELL (WHERE REQUIRED)
- (FE) NFPA 30A, 9.2.5.2/NFPA 10 HIGH FLOW FIRE EXTINGUISHER: AMEREX MODEL NO. 760, 4A: 60B: C, 20 LBS CAPACITY OR EQUAL, ARE PROVIDED WITHIN 100 FT OF ALL DISPENSING PUMPS & FILL PIPE OPENINGS..
- ⊘ FULL PORT BALL VALVE
- ⊥ UNION

ISSUE/REVISION RECORD	DATE	DESCRIPTION

RaceTrac
 RACETRAC PETROLEUM, INC.
 3228 CUMBERLAND BOULEVARD
 SUITE 100
 ATLANTA, GEORGIA 30339
 (770) 451-7600

PROJECT NAME
HWY 316 @ 81

BETHLEHEM GEORGIA
 839 LOGANVILLE HWY

RACETRAC PROJECT NUMBER
1304

PLAN SERIES
2011 BR-RH-M90 0801

PLAN MODIFICATION NOTICE
 NO MODIFICATIONS APPLIED
 MODIFICATIONS APPLY
 SPB NO. N/A DATE N/A

STANDARD PLAN BULLETINS (SPB) MODIFY THE PLAN SERIES SET NOTED ABOVE. THE SPB GIVEN ABOVE REPRESENTS THE LATEST MODIFICATION INCORPORATED TO THIS PLAN SERIES SET. CONTACT RACETRAC ENGINEERING AND CONSTRUCTION FOR ALL BULLETINS.

PROFESSIONAL SEAL
 GEORGIA REGISTERED PROFESSIONAL ENGINEER
 RICHARD R. MORRIS
 No. 0012902
 GA REG # PE013997

PROJECT NUMBER
18213

SHEET TITLE
FUELING TANK & PIPING LAYOUT

SHEET NUMBER
RT-T1.0

ISSUED FOR CONSTRUCTION

Order Plans @ WWW.Engineering.com

DEC 13 2010