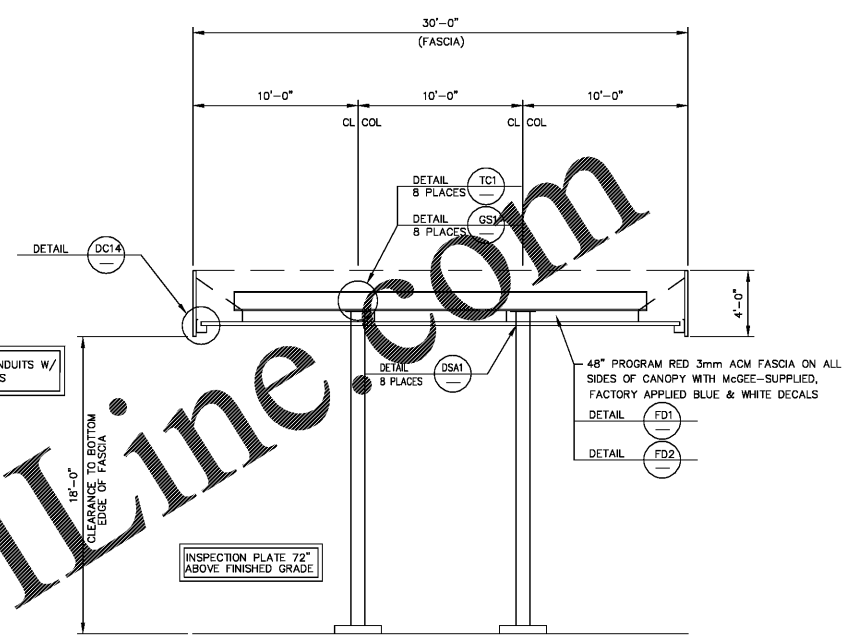


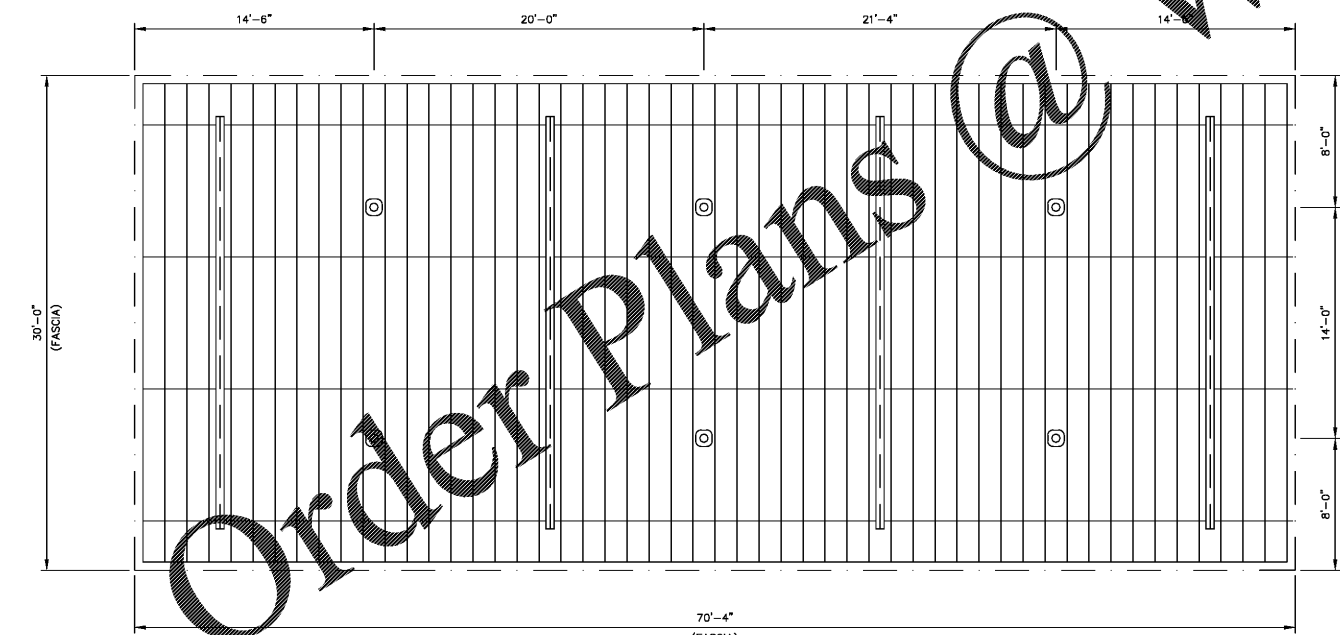
NOTE: TOP PLATES FOR EVEN NUMBER COLUMNS TO BE 1" HIGHER THAN ODD NUMBER COLUMNS. BOTTOM OF BASE PLATES ARE SET LEVEL.



MAIN FRAME DETAIL

20 GA. BRONZE EMBOSSED GRAND SPAN 16.0" STEEL DECKING 52 PANELS @ 29'-0"
 .032 ALUMINUM GUTTER SYSTEM COLOR TO MATCH DECK
 NOTE: CANOPY DRAIN CUPS MUST BE INSTALLED ON BOTH SIDES OF THE PURLINS ATTACHING TO THE DECK PANELS ON BOTH ENDS OF THE CANOPY. OTHER LOCATIONS SEE DETAIL CP1
 SPACING BETWEEN DECK PANELS MINIMUM FROM FLAT SIDE OF DECK PANEL (INDICATED ON ROOF PLAN WITH DASHED LINE)

CANOPY ROOF PLAN



CANOPY LIGHTING/DECKING LAYOUT
 (6) LSI LED LIGHT FIXTURES, ALL ELECTRICAL WORK BY OTHERS

ERECTION NOTES:
 REVIEW PLANS & DETAILS PRIOR TO INSTALLATION.
 INSTALL BEAMS ACCORDING TO MARKED END #S ON ROOF PLAN. BEAM OVERHANG IS 4" LONGER ON RIGHT HAND END OF CANOPY. IF APPLICABLE, SAME APPLIES FOR BEAM OVERHANG AT TEE. THIS IS TO ALLOW FOR DECK PANEL GROWTH.
 INSTALL DECK PANELS FROM LEFT TO RIGHT ON MAIN CANOPY, IF APPLICABLE SAME APPLIES FOR TEE.
 SEE ROOF PLAN FOR PROPER SLOPE AND HOW SLOPE IS ACQUIRED.
 SEE FASCIA DETAILS WHICH ALSO REFERS BACK TO GENERAL NOTES FOR OUTRIGGER SPACINGS.
 BP FASCIA ONLY START FASCIA AT LEFT END - SEE DIMENSION FOR LOCATION OF FIRST T4 PANEL.

| ANCHOR BOLT SHIPPING REQUIREMENTS | | |
|-----------------------------------|--|----------|
| ANCHOR BOLT USE | BOLT DESCRIPTION | QUANTITY |
| BCS-BASE PLATE (8 PLACES) | 1-1/4" x 36" LONG HEX HEAD ANCHOR BOLT | 32 |

| HARDWARE LIST BREAK-DOWN (REFERENCE ONLY) | | |
|---|-----------------------------|----------|
| ITEM USE (# OF PLACES FOR CHECKING ONLY) | DESCRIPTION | QUANTITY |
| TC1-TOP PLATE (8 PLACES) | 5/8" x 2-1/2" BOLTS w/ NUTS | 32 |
| WP4-BEAM SPLICE (4 PLACES) | 5/8" x 2-1/2" BOLTS w/ NUTS | 32 |
| WP4-BEAM SPLICE (4 PLACES) | 1/4"x 6"x 1'-1" L.G. PLATE | 4 |
| PH24-CONNECTION (16 PLACES) | 5/8" x 2-1/2" BOLTS w/ NUTS | 64 |
| AP1-CONNECTION (12 PLACES) | 5/8" x 2-1/2" BOLTS w/ NUTS | 12 |

| CANOPY SHIPPING STEEL HARDWARE MANIFEST | | | | | | |
|---|----------------------------------|------------------|-----------|------------|-----------|-----------|
| QUANTITY | DESCRIPTION | QUANTITY SHIPPED | PULLED BY | CHECKED BY | TRAILER # | LOADED BY |
| 140 | 5/8" x 2-1/2" BOLTS w/ NUTS | | | | | |
| 4 | (WP4) 1/4"x 6"x 1'-1" L.G. PLATE | | | | | |

| CANOPY SHIPPING MANIFEST | | | | | |
|--------------------------|--------------------------------------|------------|--------------|---------------|------|
| | TOP PLATE | BASE PLATE | PLATE DRAINS | W/S & CONDUIT | VENT |
| 4 | MF-1 W4x22 (25'-0") | | | | |
| 4 | PUR-1 W8x10 (44'-11 7/8") | | | | |
| 4 | PUR-2 W8x10 (24'-7 7/8") | | | | |
| 3 | STR-1 L3x3x3/16" (25'-0") | | | | |
| 8 | COL 1,2,3,4,5,6,7,8, HSS 10x10x3/16" | | | | |
| 38 | SIDE OUTRIGGERS @ 48" O.C. | | | | |
| 18 | END OUTRIGGERS @ 48" O.C. | | | | |
| 1-Lot | HARDWARE | | | | |

LAWRENCE R. PILON/ PROFESSIONAL ENGINEER
 51 MAPLEVIEW DRIVE/PENNELLVILLE, NY 13132
 (315) 668-0039

MCGEE CORPORATION
 12701 East Independence Blvd. P.O. Box 1375 Matthews, NC 28106-1375
 Phone: (704) 882-1500
 Telex: (800) 528-5589

PR. JOB NO. P057358-B FINAL JOB NO. P057358-B DRAWING NO. P057358A
RACETRAC STATION #1304
839 LOGANVILLE HWY
BETHLEHEM, GA 30620 (BARROW)
 SCALE: 3/16"=1'-0" IN ACCORDANCE WITH REV. LETTER: DRAWN BY: SBL
 DATE: 9/30/2019 CHECKED BY: DATE: 9/30/2019
METAL CANOPY 30'-0" x 70'-4"
ROOF PLAN & DETAILS
 SHEET NO. 2 OF 3

