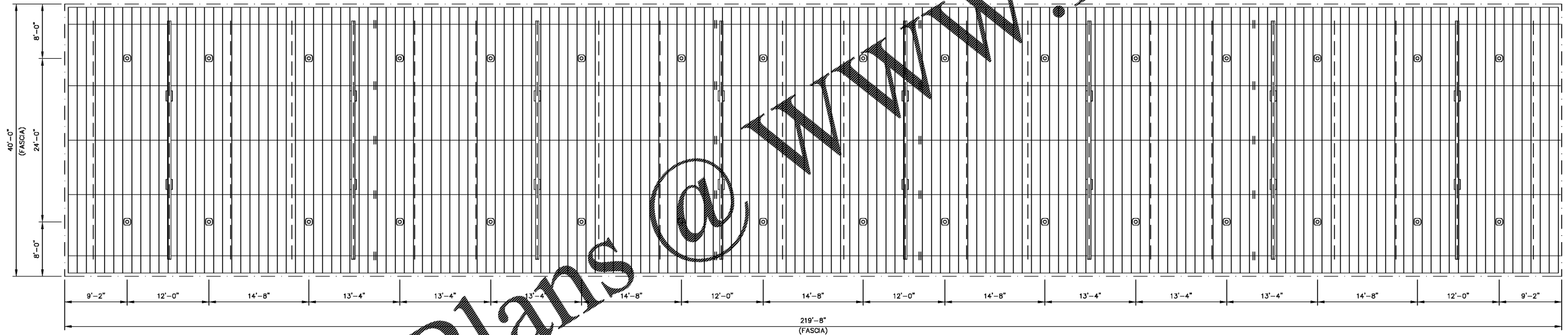
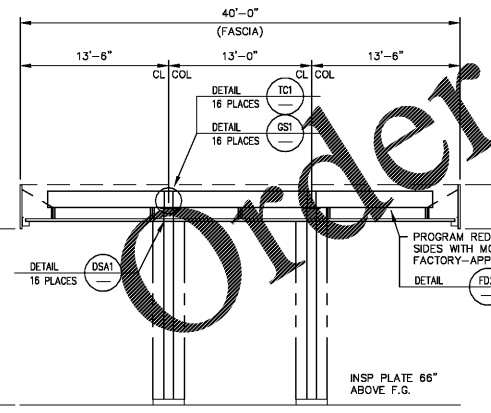


CANOPY ROOF PLAN
LOGANVILLE HWY

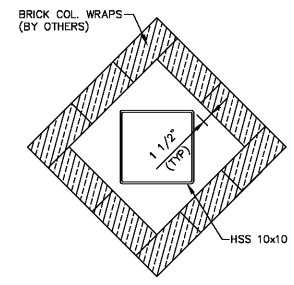
- 20 GA. WHITE EMBOSSED GRAND SPAN 16.0" STEEL DECKING 164 PANELS @ 39'-0"
- .032 ALUMINUM GUTTER SYSTEM COLOR TO MATCH DECK
- NOTE: CANOPY BEAM CLIPS MUST BE INSTALLED ON BOTH SIDES OF THE PURLIN, ATTACHING THE 1st FOUR(4) DECK PANELS ON BOTH ENDS OF THE CANOPY. ALL OTHER LOCATIONS SEE DETAIL CP1
- STITCH DECKING WITH TEK @ MIDSPAN BETWEEN PURLINS. 2" MINIMUM FROM FLAT SIDE OF DECK PAN. (INDICATED ON ROOF PLAN WITH DASHED LINE)



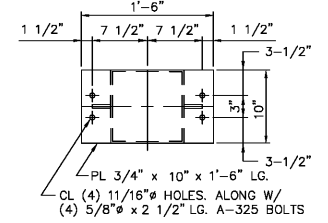
CANOPY LIGHTING LAYOUT
INSTALL (32) CREE LED LIGHT FIXTURES; ALL ELECTRICAL WORK BY OTHERS.



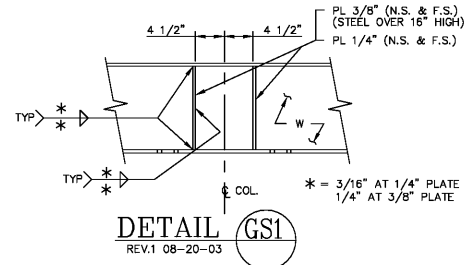
MAIN FRAME DETAIL
(6) 1" ELECTRICAL CONDUITS WITH SEAL OFF IN COLUMNS



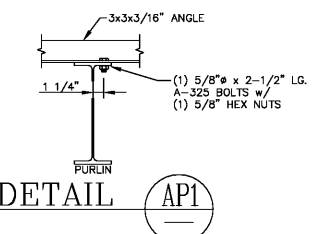
SECTION A-A
NOTE: BRICK IS NOT CONNECTED TO COLUMN



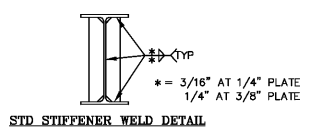
DETAIL TCI
REV.3 11-11-98



DETAIL GSI
REV.1 08-20-03



DETAIL API



STD STIFFENER WELD DETAIL

ERECTION NOTES:
REVIEW PLANS & DETAILS PRIOR TO INSTALLATION.
INSTALL BEAMS ACCORDING TO MARKED END #S ON ROOF PLAN.
BEAM OVERHANG IS 4" LONGER ON RIGHT HAND END OF CANOPY. IF APPLICABLE, SAME APPLIES FOR BEAM OVERHANG AT TEE. THIS IS TO ALLOW FOR DECK PANEL GROWTH.
INSTALL DECK PANELS FROM LEFT TO RIGHT ON MAIN CANOPY, IF APPLICABLE SAME APPLIES FOR TEE.
SEE ROOF PLAN FOR PROPER SLOPE AND HOW SLOPE IS ACQUIRED.
SEE FASCIA DETAILS WHICH ALSO REFERS BACK TO GENERAL NOTES FOR OUTRIGGER SPACINGS.
BP FASCIA ONLY START FASCIA AT LEFT END - SEE DIMENSION FOR LOCATION OF FIRST T4 PANEL.

LAWRENCE R. PILON/ PROFESSIONAL ENGINEER
51 MAPLEVIEW DRIVE/PENNELVILLE, NY 13132
(315) 668-0039

MCGEE CORPORATION 12701 East Independence Blvd., P.O. Box 1375 Matthews, NC 28109-1375 Phone: (704) 882-1500 Telex: (800) 528-5589	PR. JOB NO. 57358 FINAL JOB NO. 57358 DRAWING NO. P057358A	RACETRAC PETROLEUM, INC 839 LOGANVILLE HWY BETHLEHEM, GA 30620 (BARROW)	No. 024363 REGISTERED PROFESSIONAL ENGINEER LAWRENCE R. PILON
	SCALE: 1/8"=1'-0" DATE: 01/10/2019 IN ACCORDANCE WITH REV. LETTER:		

METAL CANOPY 40'-0" x 219'-8"
ROOF PLAN & DETAILS