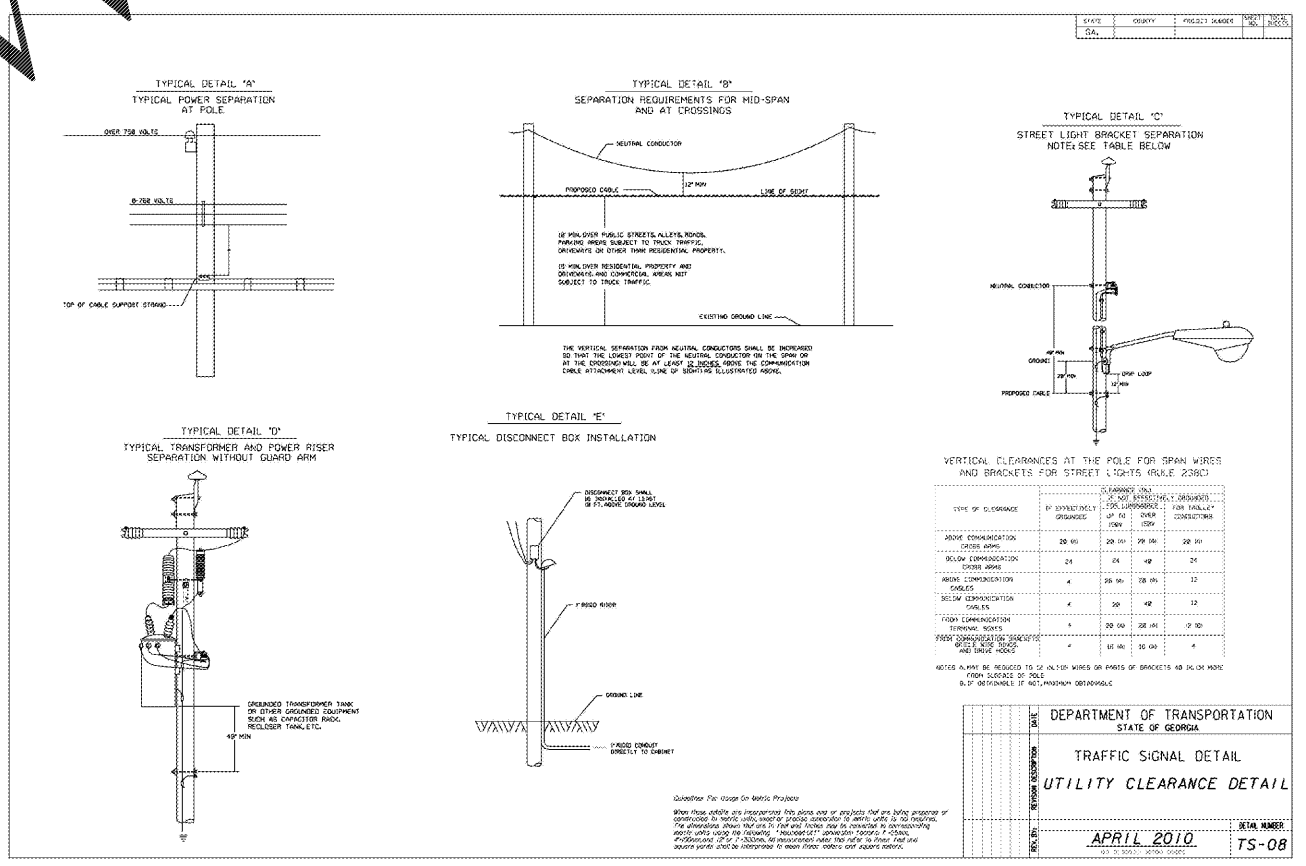
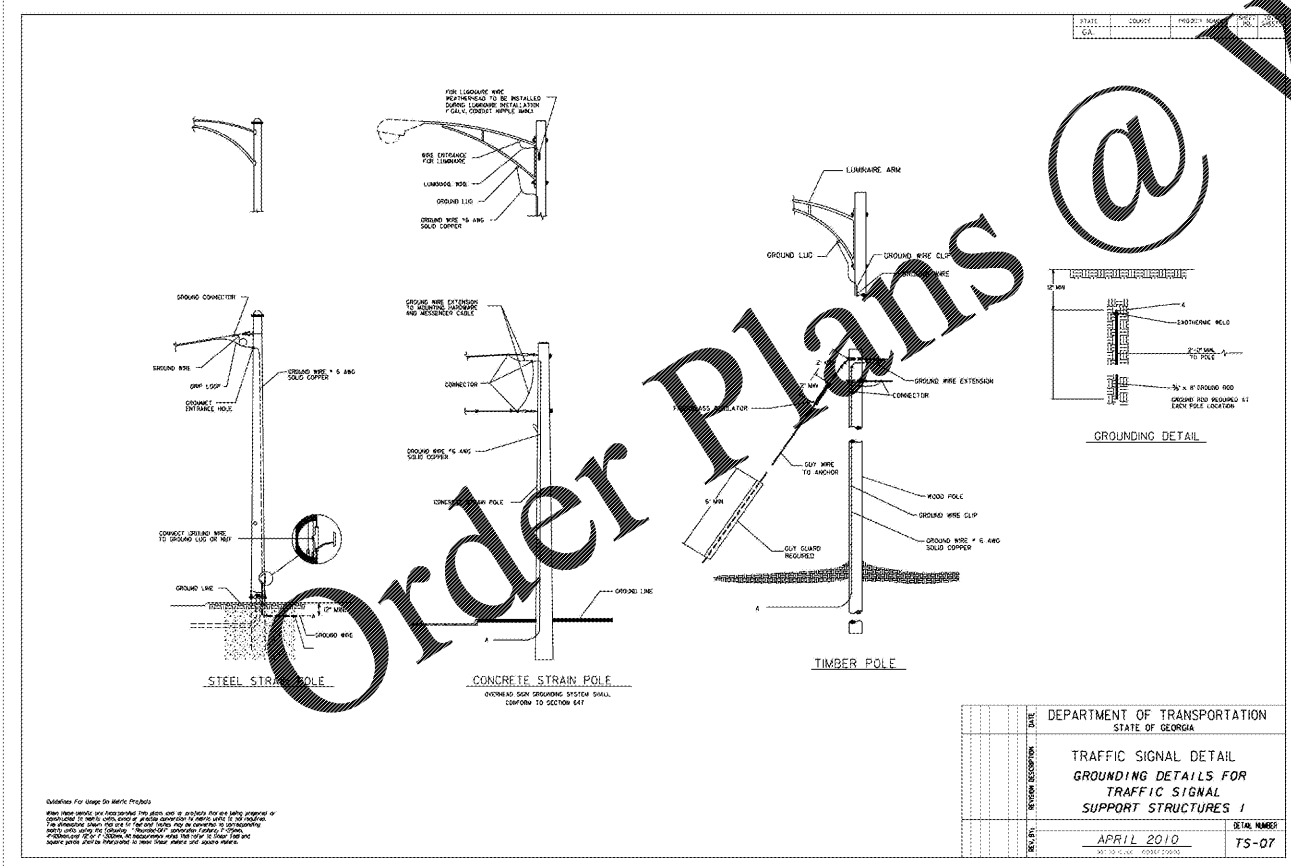
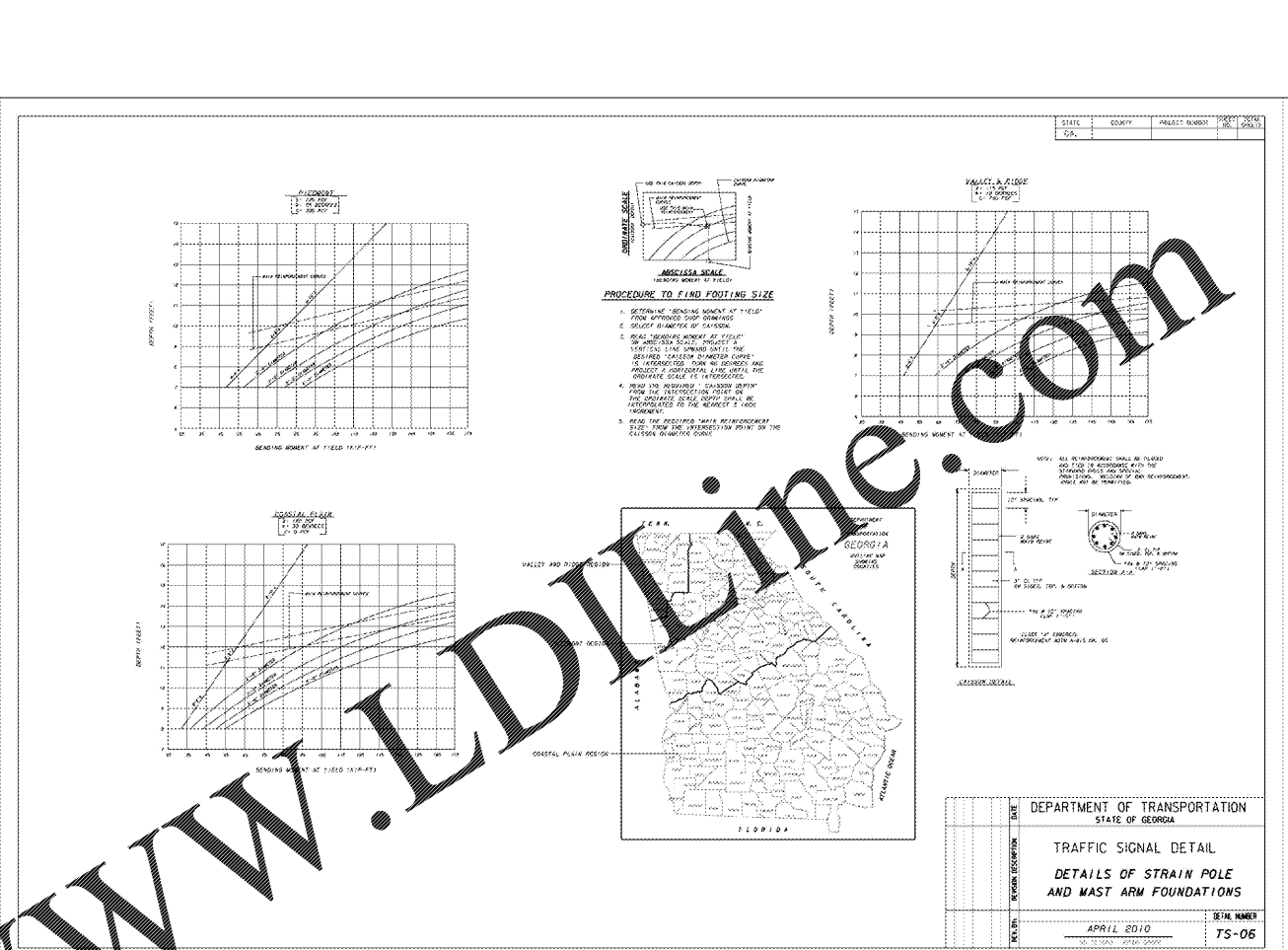
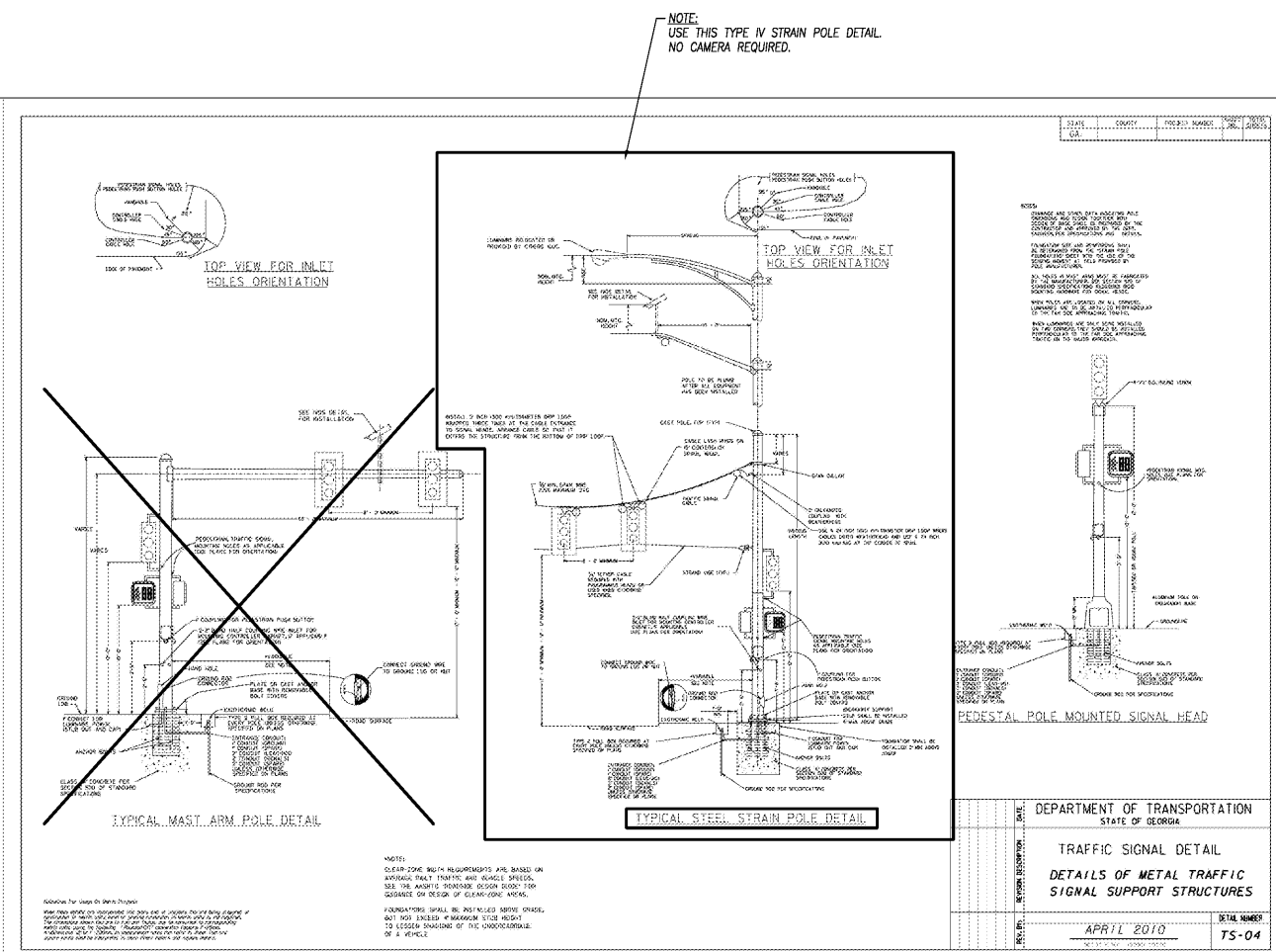


STATE	COUNTY	PROJECT NUMBER	SHEET NUMBER	DATE
GA			26	



Order Plans @

WWW.LDLINE.COM

STATE: GA COUNTY: PROJECT NUMBER: SHEET NUMBER: DATE:

W&A Engineering
CIVIL ENGINEERING LABORATORY ARCHITECTURE
CORPORATION - SOIL AND SEISMIC CONSULTING
TRAFFIC ENGINEERING - TERMINAL & FACILITIES

DEPARTMENT OF TRANSPORTATION
STATE OF GEORGIA
TRAFFIC SIGNAL DETAIL
DETAILS OF STRAIN POLE AND MAST ARM FOUNDATIONS
APRIL 2010
TS-06

DEPARTMENT OF TRANSPORTATION
STATE OF GEORGIA
TRAFFIC SIGNAL DETAIL
GROUNDING DETAILS FOR TRAFFIC SIGNAL SUPPORT STRUCTURES I
APRIL 2010
TS-05

DEPARTMENT OF TRANSPORTATION
STATE OF GEORGIA
TRAFFIC SIGNAL DETAIL
UTILITY CLEARANCE DETAIL
APRIL 2010
TS-08

DETAILS
RACETRAC 316@81
839 Loganville Hwy
Bethlehem, Georgia
Barrow County

RACETRAC PETROLEUM, INC.
200 GALLERIA PARKWAY SE
SUITE 800 ATLANTA, GA 30339
(770) 431-7600

DRAWN-BY: AGRUNER
DATE: 04.28.2019
SCALE:
DRAWING NAME:
Traffic-17293.dwg
SI-7
SHEET NO. VERSION