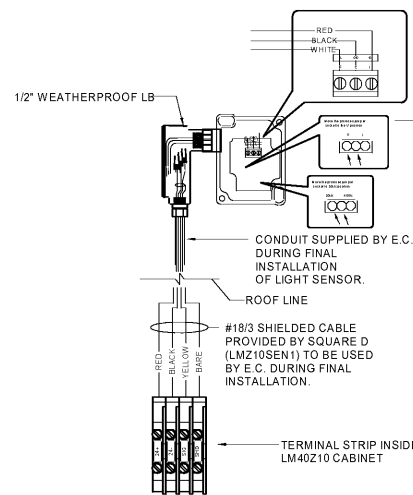


DATE	DESCRIPTION
01/25/19	PERMIT SET
03/16/20	REFRESH TO 2020.0113

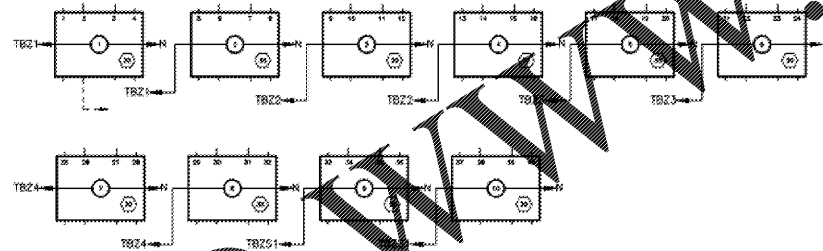
STANDARD PLAN BULLETINS (SPB) MODIFY THE LISTED SPB REPRESENTS THE LATEST MODIFICATION INCORPORATED TO THIS PROTOTYPE SERIES SET AT ORIGINAL RELEASE. THE ISSUE/REVISION RECORD COLUMN ABOVE LISTS ANY REVISIONS OR SPB INCORPORATED IN THIS SET AFTER THE ORIGINAL RELEASE. CONTACT RACETRAC ENGINEERING AND CONSTRUCTION FOR ANY SUBSEQUENT BULLETINS NOT INCORPORATED HEREIN.



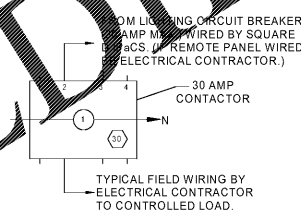
**GENERAL NOTES FOR LIGHT SENSOR INSTALLATION**

1. WIRING FOR THE LIGHT SENSOR MUST BE #18/3 SHIELDED CABLE AND SHALL BE RUN IN A SEPARATE (ELECTRICAL CONTRACTOR SUPPLIED) CONDUIT TO THE ROOF.
2. THE "SHIELD CONDUCTOR" AT THE LIGHT SENSOR JUNCTION BOX MUST BE CUT OFF AT THE INSULATION AND TAPED TO PREVENT GROUNDING. THE "SHIELD CONDUCTOR" AT THE LIGHTING MANAGER MUST BE GROUNDED TO THE MOUNTING SCREEN.
3. THE LIGHT SENSOR "EYE" MUST BE INSTALLED TO FACE THE NORTHERN SKY AWAY FROM ANY OTHER OUTSIDE LIGHTING SOURCES SUCH AS CANOPY LIGHTS, POLE LIGHTS, OR SECURITY LIGHTS.
4. THE LIGHT SENSOR MUST BE MOUNTED AT LEAST 18" ABOVE ROOF LINE.
5. \*\*\* SPECIAL NOTE - TEST AND INSPECT / ELECTRICAL CONTRACTOR \*\*\* THE LMZ10SEN1 INCLUDES THE LIGHT SENSOR INSTALLED IN AN ALB1 CONDUIT HOUSING WITH 50 FT. OF #18/3 SHIELDED CABLE. THE LMZ10SEN1 ASSEMBLY IS TO BE PRE-WIRED TO THE "FIELD WIRING" SIDE OF TERMINAL STRIP BY TEST & INSPECT AT SQUARE D TO CHECK OPERATION. AFTER CHECKOUT IS COMPLETE - TEST & INSPECT TO SECURE LMZ10SEN1 ASSEMBLY IN CABINET FOR SHIPMENT, WITH WIRES LEFT CONNECTED. THE ELECTRICAL CONTRACTOR SHALL COMPLETE INSTALLATION OF LIGHT SENSOR AT JOBSITE USING INFORMATION ABOVE.

5 LIGHT SENSOR FIELD INSTALLATION DETAIL  
 N.T.S.



3 TYPICAL CONTACTOR WIRING DETAIL  
 12" = 1'-0"



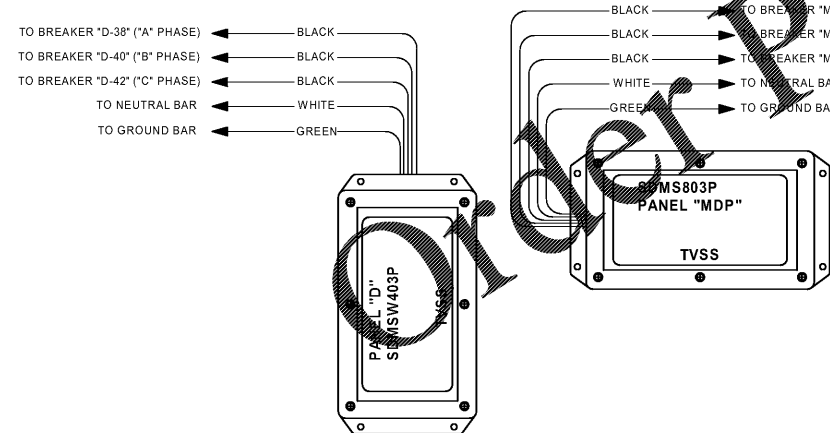
NOTE: LIGHTING CIRCUIT  
 TYPICAL LIGHTING CIRCUIT SHOWN ABOVE ON  
 CONTACTOR POLE #2

4 LIGHTING CONTACTOR DETAIL  
 N.T.S.

**GENERAL NOTES FOR LIGHTING CONTROLS**

- CGO 1 ALL DASHED LINES REPRESENT FIELD WIRING BY CONTRACTOR.
- CGO 2 OVERCURRENT PROTECTION FOR EACH LIGHTING CIRCUIT TO BE CONTROLLED BY THE FACTS LIGHTING MANAGER IS PROVIDED BY OTHERS. THIS OVERCURRENT PROTECTION SHALL BE LIMITED TO 30 AMPS MAXIMUM FOR EACH CIRCUIT.
- CGO 3 CONTROL FUSE 1" FOR LIGHTING CONTROL POWER MUST BE 75 AMP\* REPLACE ONLY WITH THE SAME TYPE AND RATING OF FUSE.
- CGO 4 CONTROL FUSE 2" FOR LIGHTING CONTROL SINK MUST BE 75 AMP\* REPLACE ONLY WITH THE SAME TYPE AND RATING OF FUSE.
- CGO 5 ALL FIELD WIRING TERMINALS MUST BE WIRED WITH A MINIMUM INSULATION RATING OF 60° C IF CIRCUIT IS RATED LESS THAN 100 AMPS OR A MINIMUM INSULATION RATING OF 75° C IF CIRCUIT IS RATED OVER 100 AMPS.
- CGO 6 ALL CONTACTORS SHALL BE WIRED INDEPENDENTLY TO A TERMINAL BLOCK AT THE OUTPUT TERMINAL BLOCK INTERFACE.
- CGO 7 THE WIRES FROM ALL CONTACTORS (1 THRU 10) MUST BE NUMBERED AT THE OUTPUT TERMINAL BLOCK INTERFACE.
- CGO 8 THE CONTACTOR CONTROL WIRING CHART SHOWS OUTPUTS 1 THRU 10 OF THE SQUARE D 250 LIGHTING MANAGER. THIS CHART ALSO SHOWS THE NUMBER OF CONTACTORS WIRED TO EACH OUTPUT AT THE FACTORY. THIS CONFIGURATION MAY BE FIELD MODIFIED BY MOVING THE INDEPENDENTLY WIRED CONTACTOR COIL WIRE TO THE CORRESPONDING TERMINAL BLOCK OF THE DESIRED OUTPUT CONTROL CHANNEL.
- CGO 9 ALL MAIN DISCONNECT AND BRANCH CIRCUIT PROTECTION SHALL BE AS SCHEDULED ON SHEET E300.
- CGO 10 INSTALLER CONTRACTOR NOTE: DO NOT REMOVE TOPPER LIGHTING CONTROL WIRES. DO NOT CONNECT ANY OTHER CIRCUITS TO THIS CONTACTOR POLE.

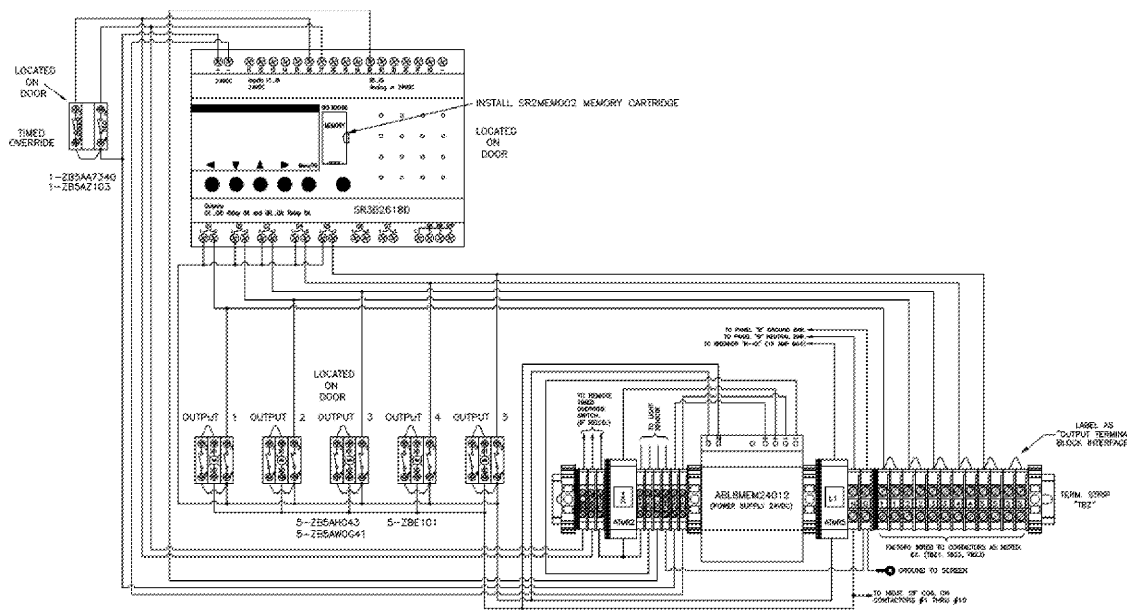
\* NOTE: THERE SHALL ONLY BE A TOTAL OF 4 WIRES LOCATED UNDER ANY ONE LUG OF THE OUTPUT TERMINAL BLOCK INTERFACE. FAILURE TO COMPLY TO THIS WARNING MAY CAUSE EXCESSIVE HEATING AND IMPROPER OPERATION OF THIS LIGHTING CONTROL SYSTEM.



1 SPD WIRING DETAIL  
 N.T.S.

120/208 VOLT COLOR CHART	
NOTE	BRANCH CIRCUIT WIRING DONE BY SQUARE D IPaCS WILL BE COLOR CODED!
A PHASE - BLACK WIRE	
B PHASE - RED WIRE	
C PHASE - BLUE WIRE	
**ALL SINGLE PHASE WIRING IN BLACK**	
ALL WIRING ABOVE #10 AWG TO BE PHASE COLORED ON EACH END.	

NOTE:  
 \* BEFORE WIRING BRANCH CIRCUITS REFER TO PANELBOARD SCHEDULES TO DETERMINE THE PHASE COLORS TO BE USED.  
 \* ALL MAIN DISCONNECT AND BRANCH CIRCUIT PROTECTION SHALL BE AS SCHEDULED ON SHEET E410 & E411.



2 CONTACTOR CONTROL WIRING  
 12" = 1'-0"