

Symbol	Label	Qty	Catalog Number	Description	Lamp	File	Lumens	LLF	Watts
□	704	38	SCV-LED-10L-SC-UNV-DIM-50-WHT	SCOTTSDALE VERTEX PETROLEUM CANOPY LED LUMINAIRE	LEDS.	SCV-LED-10L-SC-50.IES	Absolute	1.00	66
○	B	8	A2/B1-05	WITH WHITE TRIM AND RECESSED WHITE PLASTIC LENS	LEDS. LUMEN RATING = 648 LMS.	LR6.ies	647	0.90	11.5
○	C2	9	SP2-ANG-12LED-3K-700-FCO	SPECTRA SMALL SCALE POST TOP LUMINAIRE FROSTED GLASS DIFFUSER.	12 LEDS	SP2-ANG-12LED-3K-700-FCO.IES	1517	0.90	27.3

Symbol	Label	Qty	Catalog Number	Description	Lamp	File	Lumens	LLF	Watts
□	702	7	MRM-LED-30L-SL-FI-UNV-DIM-50-70CRI	MIRANDA - MRM OUTDOOR LED AREA LIGHT	LEDS.	MRM-LED-30L-SL-FI-50-70CRI.IES	Absolute	1.00	247
□	702S	5	MRM-LED-30L-SL-FI-UNV-DIM-50-70CRI-IL	MIRANDA - MRM OUTDOOR LED AREA LIGHT (SHIELDED)	LEDS.	MRM-LED-30L-SL-FI-50-70CRI-IL.IES	Absolute	1.00	247
□	501	3	XWM-FT-LED-06L-50-UE-BRZ	MIRANDA WALL SCENCE (XWM)	LEDS.	LSI XWM-FT-LED-06-50.IES	Absolute	1.00	59
□	502	3	XWM-FT-LED-04L-50-UE-BRZ	MIRANDA WALL SCENCE (XWM)	LEDS.	LSI XWM-FT-LED-04-50.IES	Absolute	1.00	40

Description	Symbol	Avg	Max	Min	Max/Min	Avg/Min
Beyond Property Line	+	0.0 fc	0.7 fc	0.0 fc	N/A	N/A
Canopy	+	29.5 fc	33.9 fc	18.2 fc	1.9:1	1.6:1
Canopy (EDO)	+	17.0 fc	23.6 fc	7.8 fc	3.0:1	2.2:1
Site	+	3.2 fc	19.4 fc	0.0 fc	N/A	N/A
Vehicle	X	4.2 fc	19.4 fc	0.1 fc	194:0:1	44:0:1
Property Line	+	0.3 fc	2.0 fc	0.0 fc	N/A	N/A

- GENERAL NOTES**
- ALL FIXTURES UTILIZED IN THIS SITE PHOTOMETRIC PLAN ARE FULL CUTOFF.
 - MOUNT AREA LUMINAIRE TYPES '702' AND '702S' AT 28'-0" AFG (INCLUDING POLE BASE)
 - FILE NUMBERS PROVIDED FOR PHOTOMETRY REFERENCE ONLY. CATALOG NUMBERS SHALL BE UTILIZED FOR ORDERING FIXTURES.
 - COLOR TEMPERATURE OF FIXTURES SHALL BE PROVIDED AS FOLLOWS
 - AREA LIGHTING - 5700K
 - BUILDING MOUNTED - 5700K
 - DECORATIVE POLE - 5000K
 - CANOPY - 5700K
 - CANOPY DOWNLIGHTS - 4000K

RaceTrac
GOVERNMENT NOTICE

THESE PLANS ARE SUBJECT TO FEDERAL COPYRIGHT LAWS; ANY USE OF SAME WITHOUT THE EXPRESSED WRITTEN PERMISSION OF RACETRAC PETROLEUM, INC. IS PROHIBITED. 2016 RACETRAC PETROLEUM INC.

DESIGN PROFESSIONALS

GPD GROUP
Professional Corporation

520 South Main St., Suite 2531
Akron, OH 44311

ISSUE/REVISION RECORD

DATE	DESCRIPTION
01/25/19	PERMIT SET
03/16/20	REFRESH TO 2020 0113

RaceTrac

RACETRAC PETROLEUM, INC.
200 GALLERIA PARKWAY SOUTHEAST
SUITE 800
ATLANTA, GEORGIA 30339
(770) 431-7800

PROJECT NAME
HWY 316 @ 81

BETHLEHEM
GA
839 LOGANVILLE HIGHWAY

RACETRAC STORE NUMBER
#1304

PROTOTYPE SERIES 5.5K 2.0
2020 LH MO 0405

PLAN MODIFICATION NOTICE

SPB NO. 015 DATE 02/10/20

STANDARD PLAN BULLETINS (SPB) MODIFY THE PROTOTYPE SERIES SET NOTED ABOVE. THE LISTED SPB REPRESENTS THE LATEST MODIFICATION INCORPORATED TO THIS PROTOTYPE SERIES SET AT ORIGINAL RELEASE. THE ISSUE/REVISION RECORD COLUMN ABOVE LISTS ANY REVISIONS OR SPB INCORPORATED IN THIS SET AFTER THE ORIGINAL RELEASE. CONTACT RACETRAC ENGINEERING AND CONSTRUCTION FOR ANY SUBSEQUENT BULLETINS NOT INCORPORATED HEREIN.

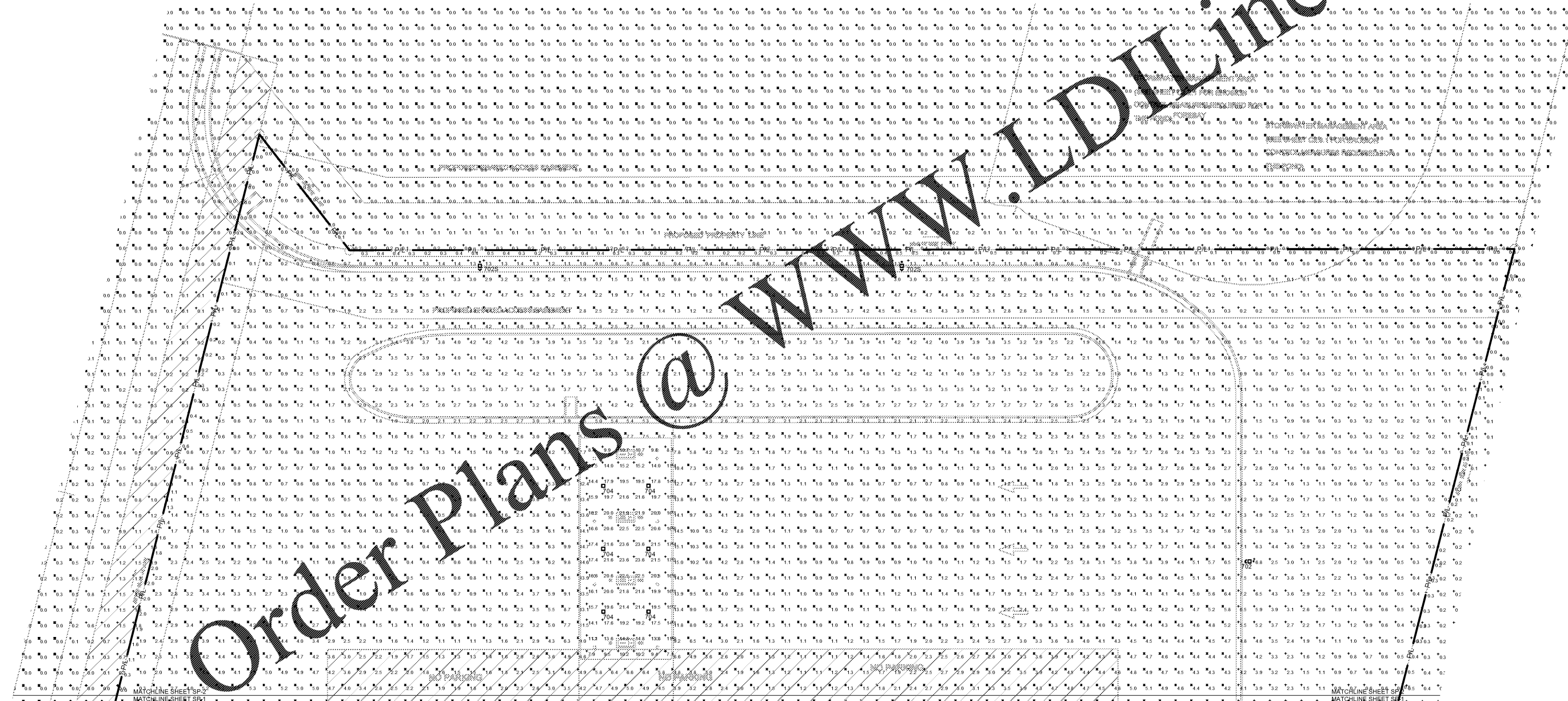
PROFESSIONAL SEAL

PROJECT NUMBER
20181514

SHEET TITLE

SITE
PHOTOMETRY
PLAN (CONT.)

SHEET NUMBER
SP-2



Order Plans @ www.landscape.com