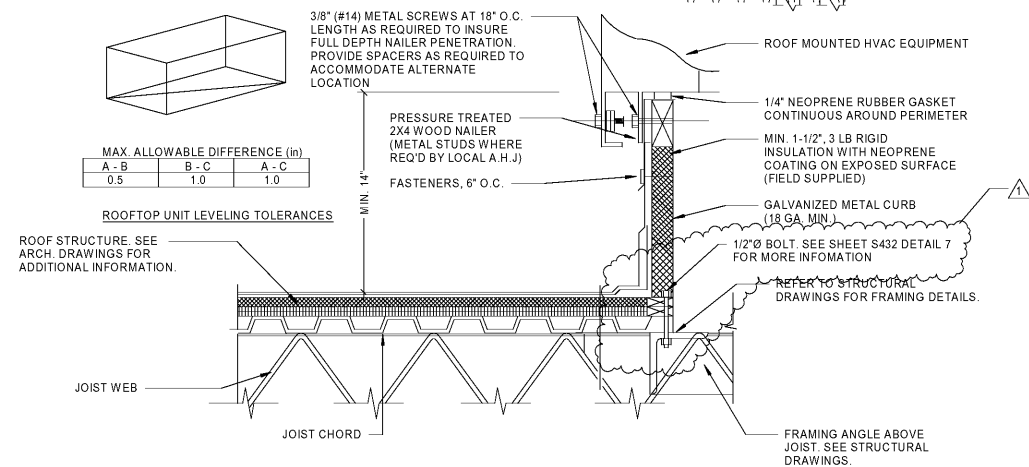


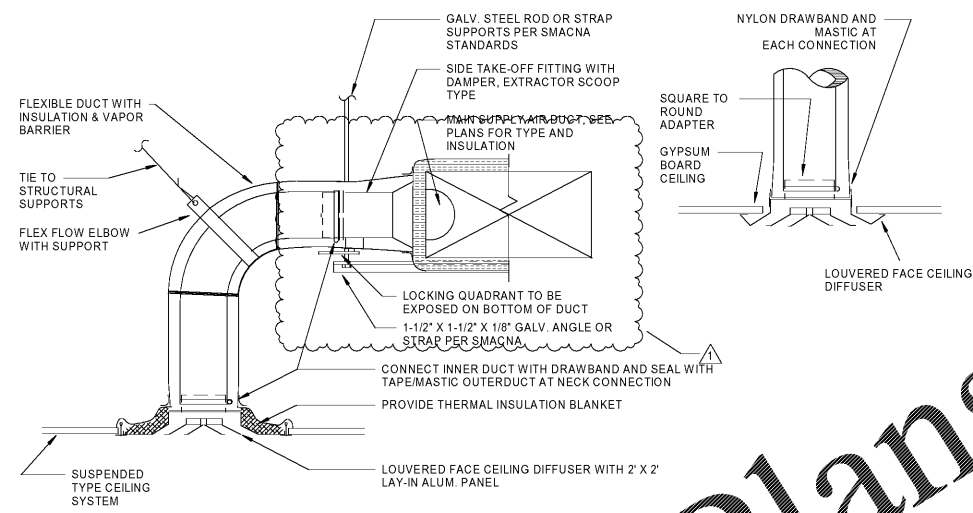
NOTE  
DETAIL SHOWN FOR REFERENCE ONLY FOR ATTACHMENT PURPOSES. CODE COMPLIANCE SHALL BE DETERMINED AND VERIFIED BY A LICENSED STRUCTURAL ENGINEER.



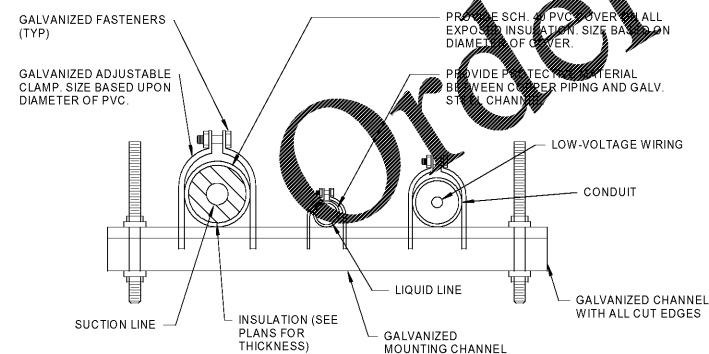
**ROOFTOP UNIT INSTALLATION NOTES**

1. DUCT TRANSITION FROM RTU TO DUCT SIZE SHOWN ON MECHANICAL FLOOR PLAN SHALL BE MADE BETWEEN RTU AND TOP OF ROOF WITHIN CURB.
2. INSTALL PER MANUFACTURER'S RECOMMENDATION AND INSTALLATION MANUAL.
3. ALL WIRING BY ELECTRICAL CONTRACTOR.
4. SHIM CURB AS REQUIRED TO PROVIDE HORIZONTAL INSTALLATION OF UNIT WITHIN PRESCRIBED TOLERANCES.
5. CONTRACTOR SHALL COORDINATE LOCATION OF ROOF CURB WITH STRUCTURE PRIOR TO INSTALLATION.
6. ROOF CURB BY UNIT MANUFACTURER. PROVIDE ADDITIONAL BRACING AND SUPPORT AS REQUIRED FOR ROOF CURB INSTALLATION TO WITHSTAND WIND LOAD PER LOCAL CODES.
7. CURB TO BE HEAVY GAUGE GALVANIZED STEEL CONSTRUCTION AS RECOMMENDED BY MANUFACTURER. ALL FASTENERS SHALL BE CORROSION PROTECTED IF EXPOSED TO OUTDOORS.
8. CLEARANCE OF UNIT TO ABOVE FINISHED ROOF SHALL COMPLY WITH LOCAL CODE REQUIREMENTS.

**6 HVAC EQUIPMENT ROOF CURB DETAIL**



**5 TYPICAL DIFFUSER DETAIL**



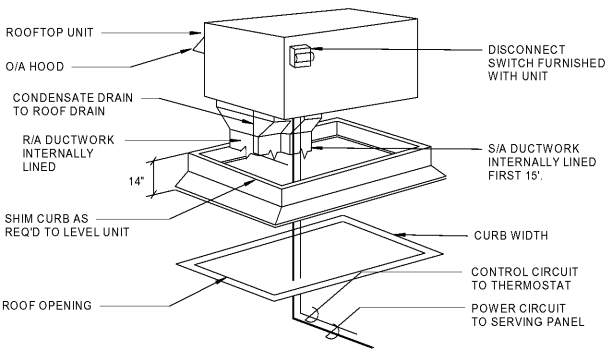
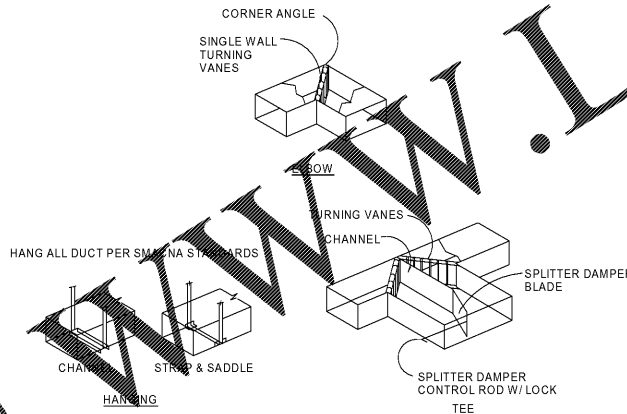
**3 REFRIGERANT PIPE MOUNTING DETAIL**



**7 RECTANGULAR TEE DUCT DETAIL**

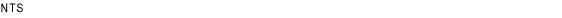


**4 HVAC DUCT DETAILS**

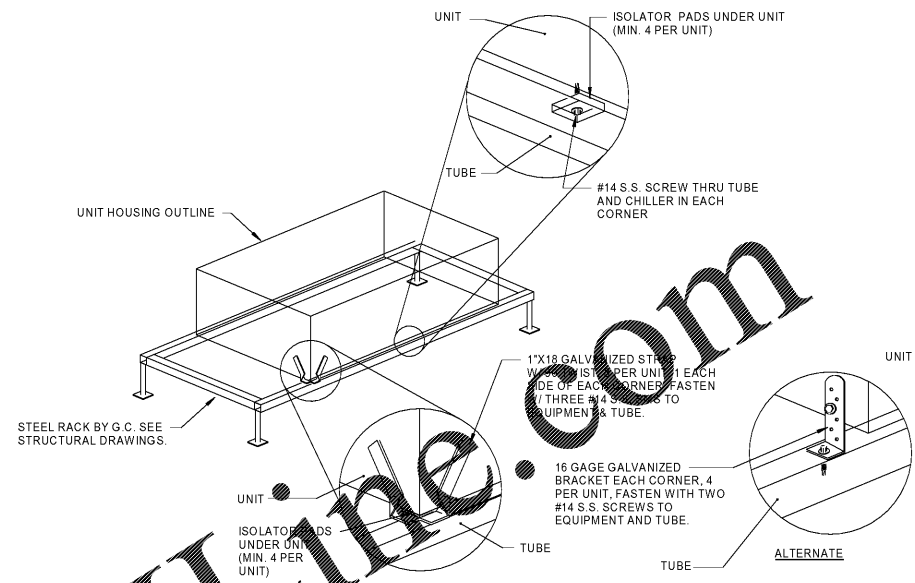


- NOTES**
1. DUCT TRANSITION FROM RTU TO DUCT SIZE SHOWN ON MECH. FLOOR PLAN SHALL BE MADE BETWEEN RTU AND TOP OF ROOF WITHIN CURB.
  2. INSTALL PER MANUFACTURER'S RECOMMENDATION AND INSTALLATION MANUAL.
  3. ALL WIRING BY ELECTRICAL CONTRACTOR.

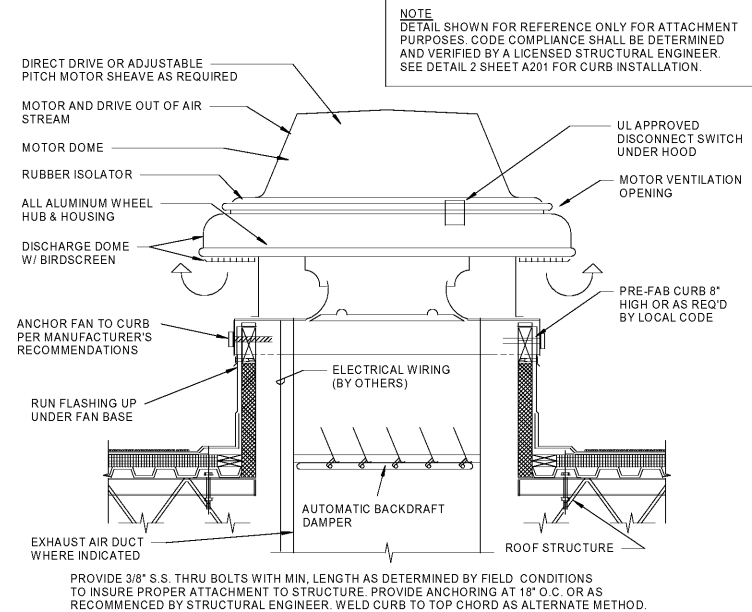
**2 ROOFTOP UNIT CONNECTIONS DETAIL**



**8 ROOF EQUIPMENT MOUNTING RACK DETAIL**



**1 ROOF MOUNTED EXHAUST FAN DETAIL**



PROVIDE 3/8\"/>

Order Plans

WWW.LDLINE.COM

**RaceTrac.**  
COPYRIGHT NOTICE  
 THESE PLANS ARE SUBJECT TO FEDERAL  
 COPYRIGHT LAWS; ANY USE OF SAME  
 WITHOUT THE EXPRESSED WRITTEN  
 PERMISSION OF RACETRAC PETROLEUM,  
 INC. IS PROHIBITED. 2016 RACETRAC  
 PETROLEUM INC.

**DESIGN PROFESSIONALS**

**GPD GROUP**  
 Professional Corporation  
 520 S. MAIN STREET, STE 2531  
 AKRON, OH 44311

**ISSUE/REVISION RECORD**

DATE	DESCRIPTION	PERMIT SET
01/25/19		
03/16/20	REFRESH TO 2020.0113	

**RaceTrac.**  
RACETRAC PETROLEUM, INC.  
 200 GALLERIA PARKWAY SOUTHEAST  
 SUITE 900  
 ATLANTA, GEORGIA 30339  
 (770) 431-7600

**PROJECT NAME**  
**HWY 316 @ 81**

**BETHLEHEM**  
**GA 30620**  
**839 LOGANVILLE HWY**

**RACETRAC STORE NUMBER**  
**#1304**

**PROTOTYPE SERIES 5.5K 2.0**  
**2018 LH MO 0405**

**PLAN MODIFICATION NOTICE**  
**SPB NO. 0405 DATE 12/18/18**

STANDARD PLAN BULLETINS (SPB) MODIFY THE PROTOTYPE SERIES SET NOTED ABOVE. THE LISTED SPB REPRESENTS THE LATEST MODIFICATION INCORPORATED TO THIS PROTOTYPE SERIES SET AT ORIGINAL RELEASE. THE ISSUE/REVISION RECORD COLUMN ABOVE LISTS ANY REVISIONS OR SPB INCORPORATED IN THIS SET AFTER THE ORIGINAL RELEASE. CONTACT RACETRAC ENGINEERING AND CONSTRUCTION FOR ANY SUBSEQUENT BULLETINS NOT INCORPORATED HEREIN.

**PROFESSIONAL SEAL**

**PROJECT NUMBER**  
 2018157.19

**SHEET TITLE**  
**MECHANICAL DETAILS**

**SHEET NUMBER**  
**M430**