



ISSUE/REVISION RECORD

| DATE | DESCRIPTION |
|----------|----------------------|
| 01/25/19 | PERMIT SET |
| 03/16/20 | REFRESH TO 2020.0113 |

RaceTrac.

RACETRAC PETROLEUM, INC.
200 GALLERIA PARKWAY SOUTHEAST
SUITE 900
ATLANTA, GEORGIA 30339
(770) 431-7600

PROJECT NAME

HWY 316 @ 81

**BETHLEHEM
GA 30620
839 LOGANVILLE HWY**

RACETRAC STORE NUMBER

#1304

**PROTOTYPE SERIES 5.5K 2.0
2018 LH MO 0405**

PLAN MODIFICATION NOTICE

SPB NO. 0405 DATE 12/18/18

STANDARD PLAN BULLETINS (SPB) MODIFY THE
PROTOTYPE SERIES SET NOTED ABOVE. THE
LISTED SPB REPRESENTS THE LATEST
MODIFICATION INCORPORATED TO THIS
PROTOTYPE SERIES SET AT ORIGINAL RELEASE.
THE ISSUE/REVISION RECORD COLUMN ABOVE
LISTS ANY REVISIONS OR SPB INCORPORATED IN
THIS SET AFTER THE ORIGINAL RELEASE.
CONTACT RACETRAC ENGINEERING AND
CONSTRUCTION FOR ANY SUBSEQUENT
BULLETINS NOT INCORPORATED HEREIN.

PROFESSIONAL SEAL

GENERAL NOTES

- AREA WITHIN 18'-0" OF DISPENSER BOTH HORIZONTALLY AND VERTICAL SHALL BE CLASS I, DIVISION 2.
- EXTINGUISHERS SHALL BE PROVIDED AND SO LOCATED THAT NO PUMP DISPENSER OR FILL-PIPE OPENING SHALL BE A GREATER DISTANCE THAN 50'-0" FROM SUCH DISPENSER.
- NO SMOKING SIGNS SHALL BE POSTED IN ACCORDANCE WITH LOCAL JURISDICTION REQUIREMENT.
- PVC PIPE SHALL NOT BE USED ON TOP OF CANOPY. ONLY 3/4" EMT WITH WATER TIGHT CONNECTIONS SHALL BE PERMITTED.
- REFER TO ELECTRICAL SCHEDULES FOR CANOPY CIRCUITS.
- REFER TO SITE ELECTRICAL PLAN FOR SECURITY CAMERA LOCATIONS AND MOUNTING.
- REFER TO FINISH SCHEDULES FOR MATERIAL SPECIFICATIONS.
- REFER TO SITE PLAN FOR NUMBER OF CANOPY SIGNS TO BE PLACED.
- REFER TO MANUFACTURERS SHOP DRAWINGS FOR ALL STRUCTURAL DETAILS.
- REFER TO SITE SPECIFIC PLAN FOR CANOPY LIGHTING.
- REFER TO SITE SPECIFIC PLAN FOR CONCRETE ISLAND LAYOUT.
- REFER TO CANOPY MANUFACTURER'S DRAWINGS FOR FOUNDATION INFORMATION AND COLUMN SURROUND.

SHEET KEYNOTES

- BUMPER POST. REFER TO CIVIL SITE DETAIL SHEETS.
- M2M RED MARK II CABINET WITH RED COVER, ON BACK SIDE OF COLUMN COVER. PROVIDE ONE 80-B RATED EXTINGUISHER.
- TOWEL DISPENSER "DCI MARKETING" ITEM NUMBER SBWC BLACK.
- TRASH CAN. REFER TO SITE PLANS.
- BUMPER POST. REFER TO CIVIL SITE DETAIL SHEETS.
- M2M RED MARK II CABINET WITH RED COVER, ON BACK SIDE OF COLUMN COVER. PROVIDE ONE 80-B RATED EXTINGUISHER.
- WOODFORD Y-34 FREEZERLESS IOWA YARD HYDRANT
- STEEL CANOPY COLUMN, PAINTED EP-1
- TOWEL DISPENSER "DCI MARKETING" ITEM NUMBER SBWC BLACK.
- RACETRAC LOGO. REFER TO SIGN PLAN

FUEL CANOPY MATERIAL SCHEDULE

FUEL CANOPY FINISH SCHEDULE

| ID | MANUF. | MATERIAL | COMMENTS |
|--------|------------------|--|--|
| FASCIA | | | |
| BLUE | | | 2" BLUE STRIPE |
| RED | | | REFER TO SPECIFICATION CHART ON SHEET C100 |
| WHITE | | | 8" WHITE STRIPE |
| PAINT | | | |
| EP-1 | SHERWIN WILLIAMS | EXTERIOR PAINT TO SW #7020 "BLACK FOX" | |

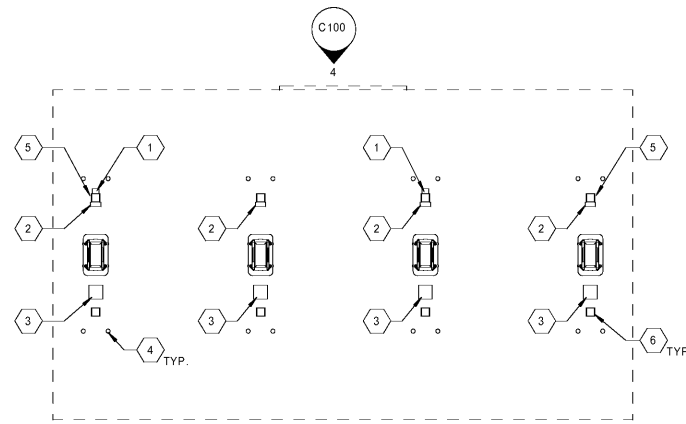
STANDARD CANOPY FASCIA COLOR SPECIFICATION CHART

| COLOR CALLOUT | CANOPY MANUFACTURER | STANDARD COLOR SPECIFICATION |
|---------------|---------------------|------------------------------|
| "TAN" | LANE CANOPIES | ETT TAN FASCIA |
| | McGEE CANOPIES | ETT TAN FASCIA |
| | MADISON CANOPIES | PUEBLO TAN FASCIA |
| "RED" | LANE CANOPIES | TRD RED FASCIA |
| | McGEE CANOPIES | TRD RED FASCIA - PROGRAM RED |
| | MADISON CANOPIES | PROGRAM RED FASCIA |

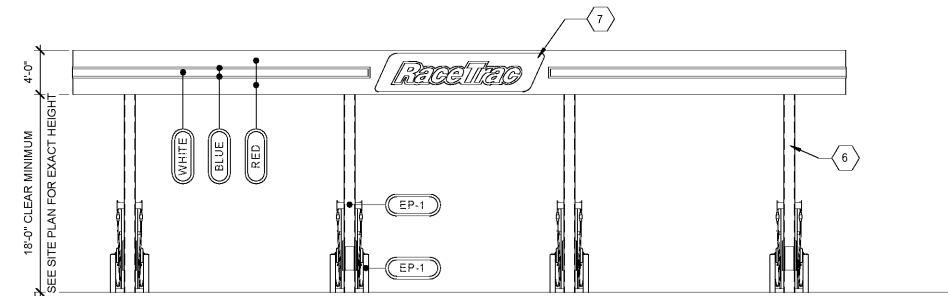
PROJECT NUMBER
2018157.19

SHEET TITLE
FUEL CANOPY PLANS AND ELEVATIONS

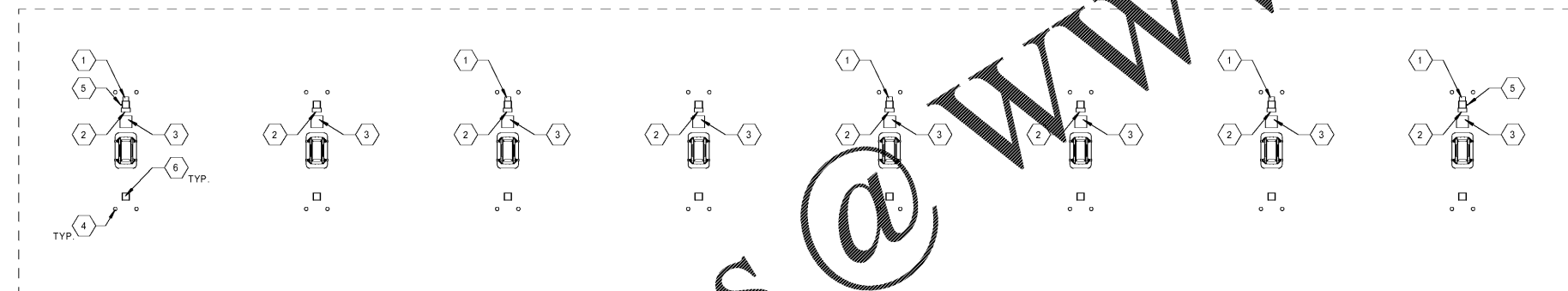
SHEET NUMBER
C100



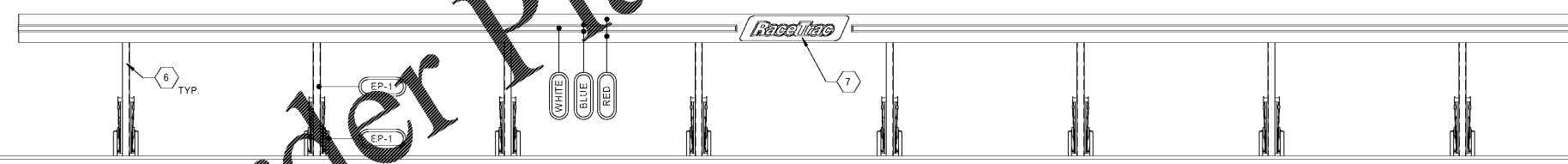
5 EDO CANOPY PLAN
3/32" = 1'-0"



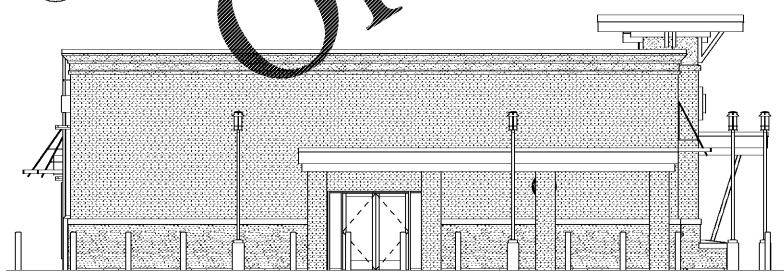
4 EDO FRONT CANOPY ELEVATION
1/8" = 1'-0"



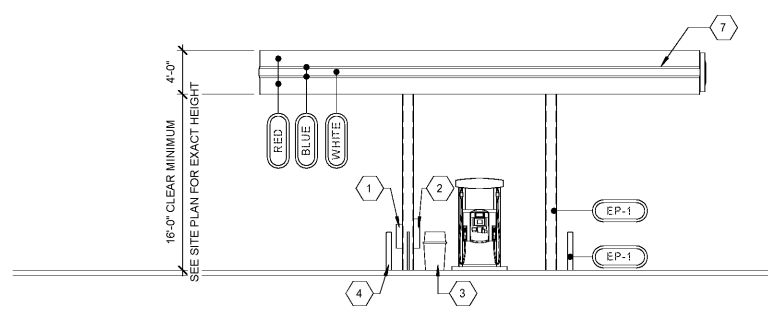
3 CANOPY PLAN
3/32" = 1'-0"



2 CANOPY FRONT ELEVATION
3/32" = 1'-0"



1 CANOPY ELEVATION
1/8" = 1'-0"



WWW.LDLINE.COM

Order Plans @