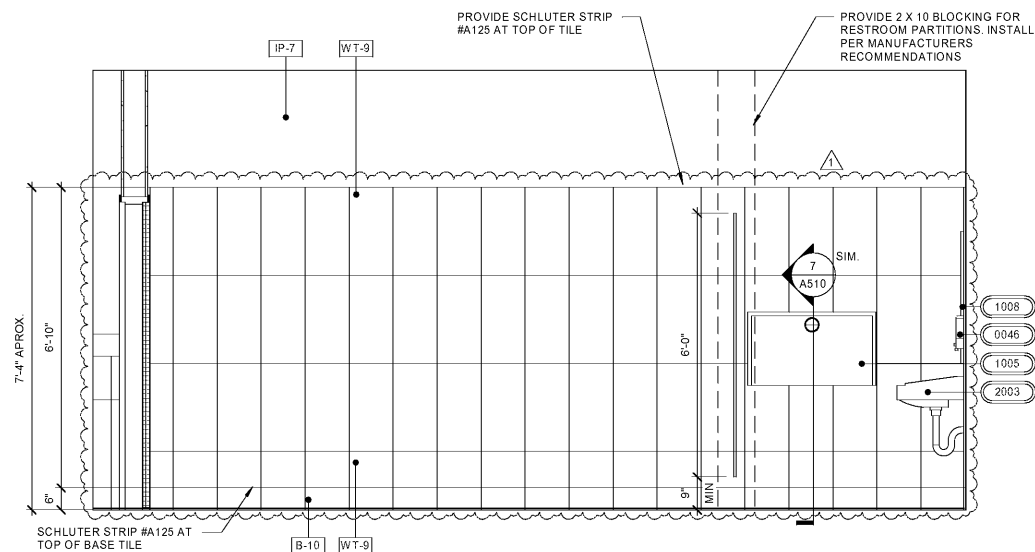
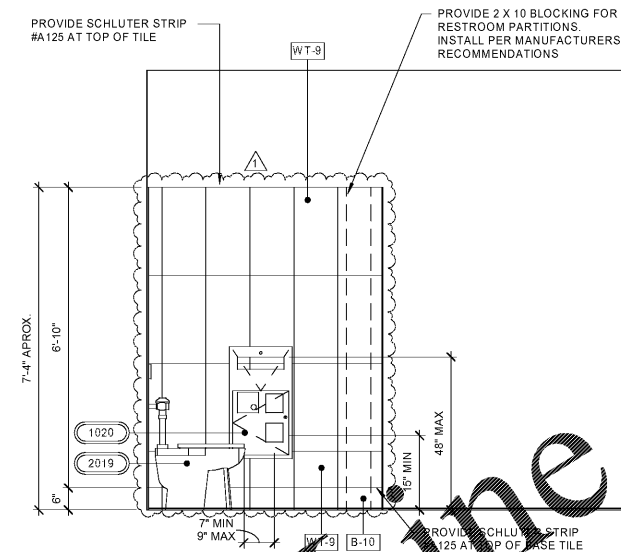


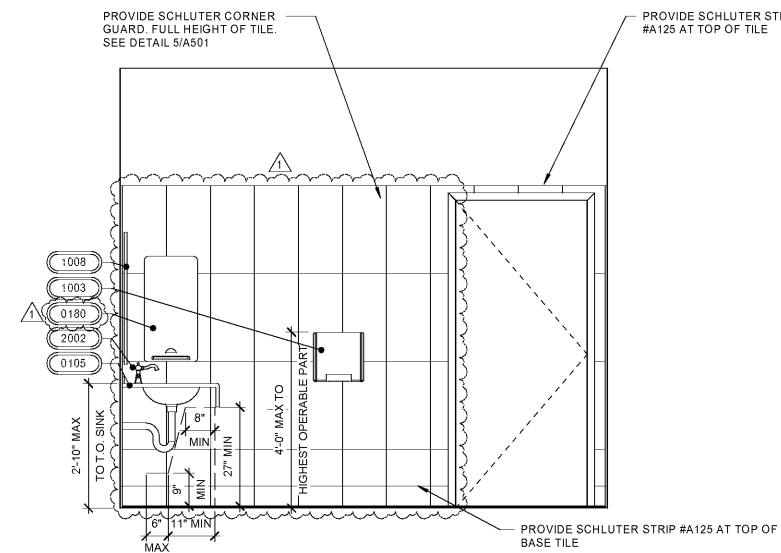
7 WOMEN'S RESTROOM STALL SECTION
1/2" = 1'-0"



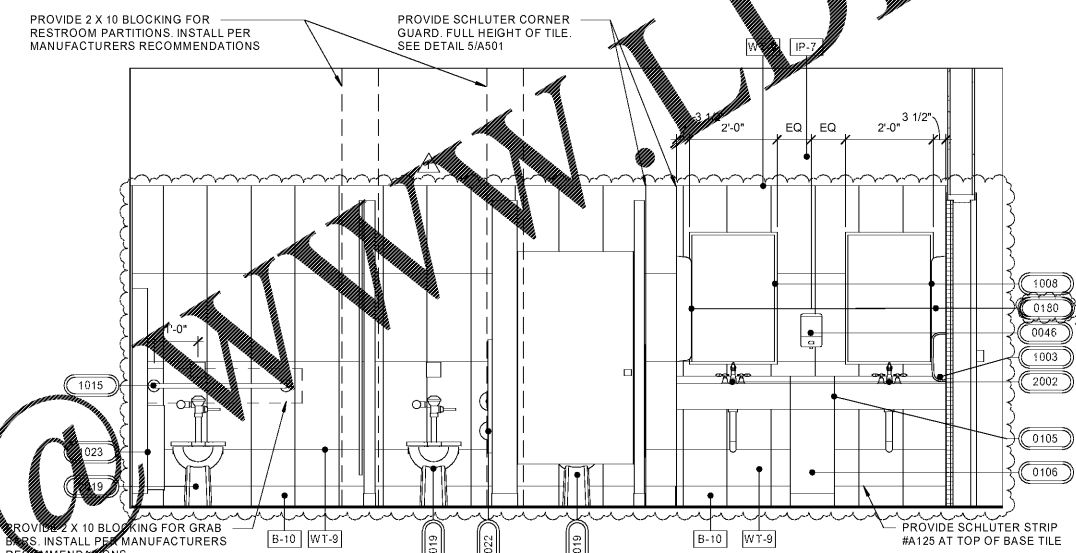
6 INTERIOR ELEVATION AT WOMEN'S RESTROOM
1/2" = 1'-0"



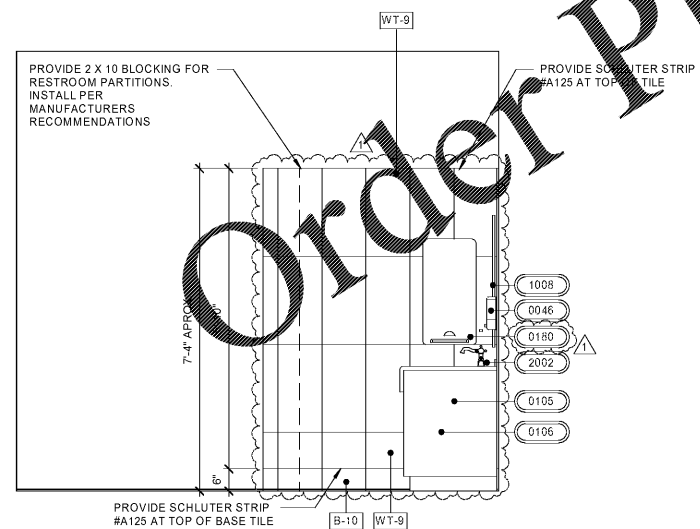
5 INTERIOR ELEVATION AT WOMEN'S RESTROOM
1/2" = 1'-0"



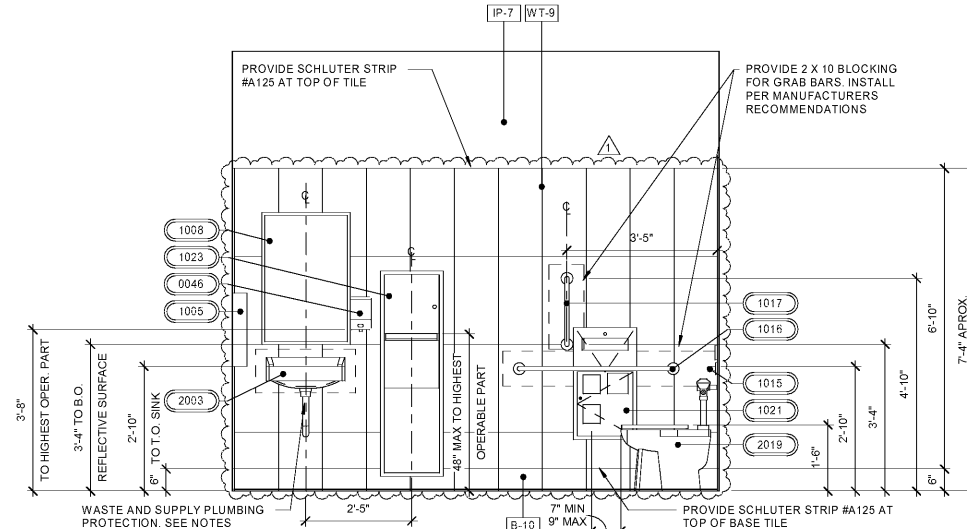
4 INTERIOR ELEVATION AT WOMEN'S RESTROOM
1/2" = 1'-0"



3 INTERIOR ELEVATION AT WOMEN'S RESTROOM
1/2" = 1'-0"



2 INTERIOR ELEVATION AT WOMEN'S RESTROOM
1/2" = 1'-0"



1 INTERIOR ELEVATION AT WOMEN'S RESTROOM
1/2" = 1'-0"

GENERAL NOTES

1. RESTROOM PARTITION TO BE PROVIDED BY OWNER.
2. SEE A141 FOR EQUIPMENT & FIXTURE SCHEDULE.
3. SEE A001 FOR ACCESSIBILITY DETAILS.
4. PROVIDE BLOCKING AS REQUIRED FOR ALL WALL MOUNTED FIXTURES AND EQUIPMENT.
5. START WALL TILE LAYOUT AT TOP. CUT TILES TO BE AT BOTTOM OF WALL.

RaceTrac.
COPYRIGHT NOTICE
 THESE PLANS ARE SUBJECT TO FEDERAL
 COPYRIGHT LAWS; ANY USE OF SAME
 WITHOUT THE EXPRESSED WRITTEN
 PERMISSION OF RACETRAC PETROLEUM,
 INC. IS PROHIBITED. 2016 RACETRAC
 PETROLEUM INC.

DESIGN PROFESSIONALS

GPD GROUP
 Professional Corporation
 520 S. MAIN STREET, STE 2531
 AKRON, OH 44311

ISSUE/REVISION RECORD

DATE	DESCRIPTION
01/25/19	PERMIT SET
03/16/20	REFRESH TO 2020.0113

RaceTrac.
 RACETRAC PETROLEUM, INC.
 200 GALLERIA PARKWAY SOUTHEAST
 SUITE 900
 ATLANTA, GEORGIA 30339
 (770) 431-7600

PROJECT NAME
HWY 316 @ 81

BETHLEHEM
 GA 30620
 839 LOGANVILLE HWY

RACETRAC STORE NUMBER
#1304

PROTOTYPE SERIES 5.5K 2.0
 2018 LH MO 0405

PLAN MODIFICATION NOTICE
 SPB NO. 0405 DATE 12/18/18

STANDARD PLAN BULLETINS (SPB) MODIFY THE PROTOTYPE SERIES SET NOTED ABOVE. THE LISTED SPB REPRESENTS THE LATEST MODIFICATION INCORPORATED TO THIS PROTOTYPE SERIES SET AT ORIGINAL RELEASE. THE ISSUE/REVISION RECORD COLUMN ABOVE LISTS ANY REVISIONS OR SPB INCORPORATED IN THIS SET AFTER THE ORIGINAL RELEASE. CONTACT RACETRAC ENGINEERING AND CONSTRUCTION FOR ANY SUBSEQUENT BULLETINS NOT INCORPORATED HEREIN.

PROFESSIONAL SEAL

PROJECT NUMBER
 2018157.19

SHEET TITLE
RESTROOM ELEVATIONS

SHEET NUMBER
A511

Order Plans

WWW.DIPLINE.COM