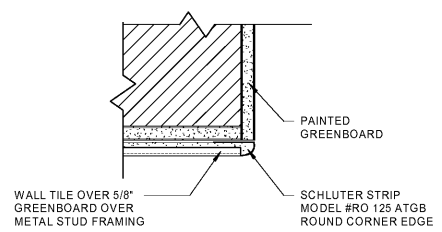
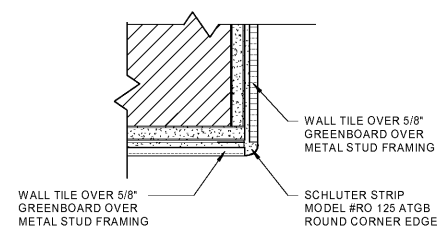


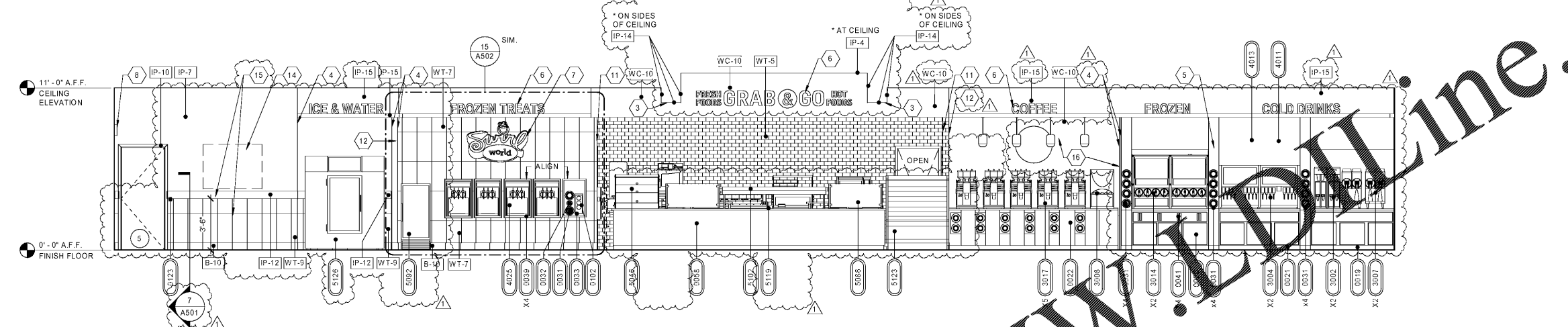
7 WAINSCOT DETAIL
3/4" = 1'-0"



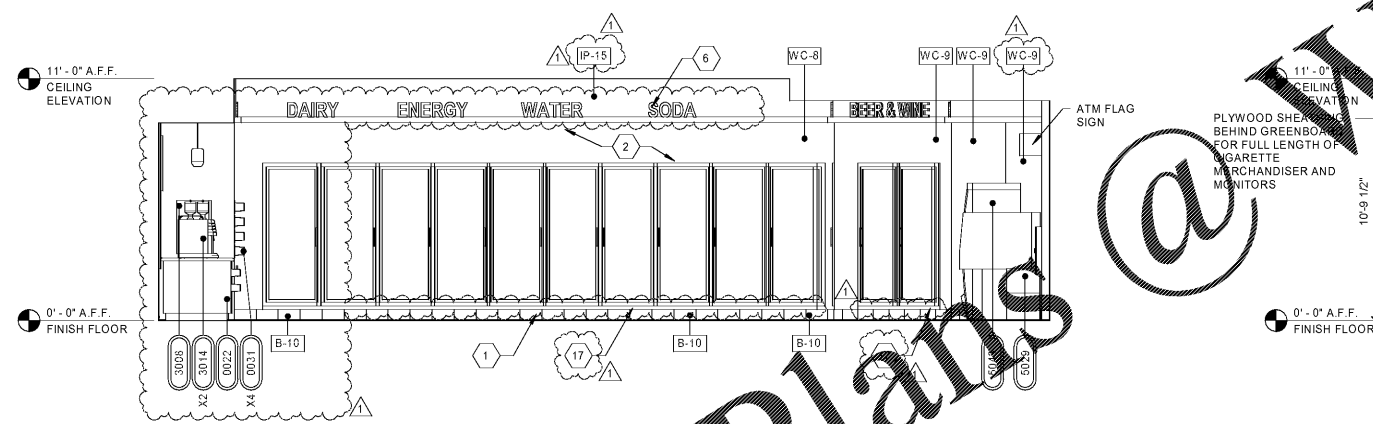
6 TILE TO GYP CORNER DETAIL
3" = 1'-0"



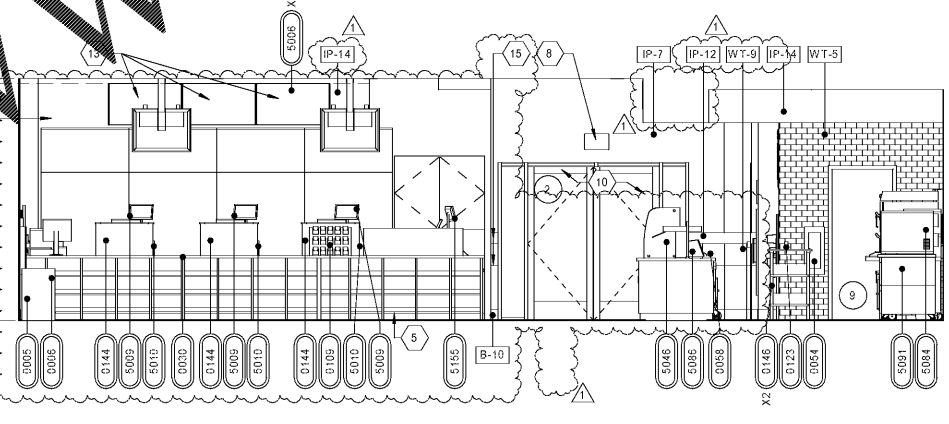
5 TILE TO TILE CORNER DETAIL
3" = 1'-0"



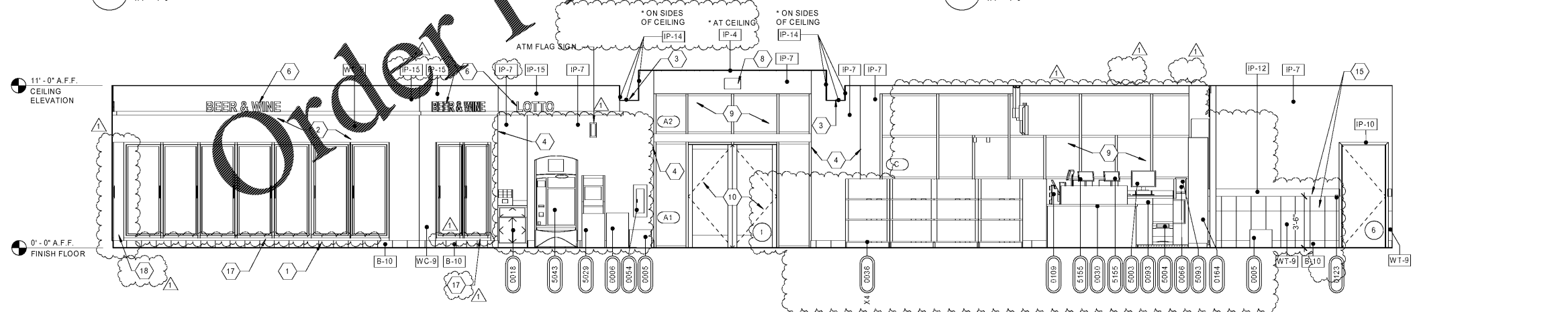
4 INTERIOR ELEVATION AT SALES FLOOR
1/4" = 1'-0"



3 INTERIOR ELEVATION AT SALES FLOOR
1/4" = 1'-0"



2 INTERIOR ELEVATION AT SALES FLOOR
1/4" = 1'-0"



1 INTERIOR ELEVATION AT SALES FLOOR
1/4" = 1'-0"

GENERAL NOTES

- ALL FINISH FLOOR ELEVATIONS TAKEN FROM TOP OF TILE.
- COFFEE, FROZEN DRINK DISPENSER AND YOGURT MACHINES TO COMPLY WITH THE REACH RANGES OR 15' LOW & 48" HIGH PER 2010 ADA STANDARDS, SECTION 308.
- ALL SELF-SERVICE STATIONS SHALL BE INSTALLED TO HAVE A MAX. REACH HEIGHT OF 48" AS MEASURED TO THE HIGHEST OPERABLE PART (44" IF REACH 20"-25").
- DRINKING FOUNTAINS (2010 ADA SECTION 602): THE SPOUT SHALL BE LOCATED 15" MIN. FROM VERTICAL SUPPORT AND 5" MAX FROM THE FRONT EDGE OF THE UNIT, INCLUDING BUMPERS. THE SPOUT SHALL PROVIDE A FLOW OF WATER 4" HIGH MIN AND SHALL BE LOCATED 5" MAX FROM THE FRONT OF THE UNIT. WHERE SPOUTS ARE LOCATED LESS THAN 3" OF THE FRONT OF THE UNIT, THE ANGLE OF THE WATER STREAM SHALL BE 30 DEGREES MAX. (MEASURED HORIZONTALLY FROM THE FACE OF THE UNIT. WHERE SPOUTS ARE LOCATED BETWEEN 3" AND 5" MAX. FROM THE FRONT OF THE UNIT, THE ANGLE OF THE WATER STREAM SHALL BE 15 DEGREES MAX.)
- DRINKING FOUNTAINS (2010 ADA SECTION 602): DRINKING FOUNTAINS FOR SENIORS SHALL HAVE A SPOUT HEIGHT OF 43" AND SHALL NOT COMPLY WITH ABOVE.
- ALL INTERIOR METAL STUDS ARE 3-5/8" U.O.N.
- ALL GYP BOARD TO BE 5/8" THICK GREENBOARD PREPARED WITH KILN DRY PRIMER UNLESS NOTED OTHERWISE.
- PROVIDE DRYWALL FINISH LEVEL 4 WHERE FLAT PAINT, LIGHT TEXTURE OR WALLCOVERINGS ARE TO BE APPLIED.
- PROVIDE DRYWALL FINISH LEVEL 4 WHERE GLOSS, SEMI-GLOSS, ENAMEL OR NON-TEXTURED FLAT PAINTS ARE SPECIFIED OR WHERE SEVERE LIGHTING CONDITIONS OCCUR.
- PROVIDE JOINT SEALANT AND JUNCTURE OF ALL DISSIMILAR MATERIALS.
- INSTALL GREENBOARD ON OUTSIDE FACES OF WALK-IN COOLERS AND FREEZERS.
 - LIGHTLY SAND SURFACE OF COOLER/FREEZER FACES TO INSURE BONDING OF ADHESIVE.
 - ADHESIVE TO BE BOSTIK, ULTRA-SET APPROVED EQUAL.
 - INSTALL GREENBOARD IN FULL BED OF ADHESIVE WITH NOTCHED TROWEL. PROVIDE INSTALLATION IN ACCORDANCE WITH THE ADHESIVE MANUFACTURERS PRINTED INSTRUCTIONS.
- PROVIDE BLOCKING AS REQUIRED FOR ALL WALL MOUNTED FIXTURES AND EQUIPMENT.

SHEET KEYNOTES

- PLACE CERAMIC TILE BASE UP TO COOLER DOOR FRAME.
- SHEETROCK ENTIRE FACE OF WALK-IN COOLERS AND FREEZER PANELS. SEE GENERAL NOTE #11.
- BULKHEAD AT 10'-0"
- PROVIDE SCHLUTER CORNER GUARD, 8" - 0" HIGH DEFENDER SERIES 2340. 1" UNDRILLED WITH ADHESIVE.
- MILLWORK BY MILLWORK VENDOR.
- MARKETING BY RACETRAC.
- SWIRL WORLD SIGN.
- EXIT SIGN.
- STOREFRONT SYSTEM BEYOND.
- STOREFRONT ENTRY AS SCHEDULED BEYOND WITH TRANSOM AND SIDELIGHTS.
- PROVIDE SCHLUTER CORNER GUARD, FULL HEIGHT OF TILE. SEE DETAIL 5/A501.
- PROVIDE SCHLUTER CORNER GUARD, FULL HEIGHT OF TILE. SEE DETAIL 6/A501.
- PROVIDE BLOCKING FOR COMMERCIAL DISPLAYS PER MANUFACTURER RECOMMENDATIONS.
- VINYL GRAPHICS BY OTHERS.
- INSTALL 1/4" GYPSUM BOARD TO TOP OF MILLWORK WALL.
- GC TO INSTALL BLACK FLAT .040 BRAKE METAL WITH HEMMED EDGES IN SPACE BETWEEN THE BOTTOM OF THE COOLER DOORS AND THE TOP OF THE BASE TILE. GC TO FIELD VERIFY HEIGHT.
- GC TO INSTALL BLACK FLAT .040 BRAKE METAL WITH HEMMED EDGES IN THE TIGHT CORNER SPACE ADJACENT TO THE LAST BEER & WINE COOLER DOOR. BRAKE METAL TO EXTEND FROM THE TOP OF THE CERAMIC TILE BASE TO THE TOP OF THE COOLER DOOR. GC TO FIELD VERIFY HEIGHT.

RaceTrac.
COPYRIGHT NOTICE
 THESE PLANS ARE SUBJECT TO FEDERAL COPYRIGHT LAWS; ANY USE OF SAME WITHOUT THE EXPRESSED WRITTEN PERMISSION OF RACETRAC PETROLEUM, INC. IS PROHIBITED. 2016 RACETRAC PETROLEUM, INC.

DESIGN PROFESSIONALS

GPD GROUP
 Professional Corporation
 520 S. MAIN STREET, STE 2531
 AKRON, OH 44311

ISSUE/REVISION RECORD

DATE	DESCRIPTION
01/25/19	PERMIT SET
03/16/20	REFRESH TO 2020.01.13

RaceTrac.
 RACETRAC PETROLEUM, INC.
 200 GALLERIA PARKWAY SOUTHEAST
 SUITE 900
 ATLANTA, GEORGIA 30339
 (770) 431-7600

PROJECT NAME
HWY 316 @ 81

BETHLEHEM
 GA 30620
 839 LOGANVILLE HWY

RACETRAC STORE NUMBER
#1304

PROTOTYPE SERIES 5.5K 2.0
2018 LH MO 0405

PLAN MODIFICATION NOTICE
 SPB NO. 0405 DATE 12/18/18

STANDARD PLAN BULLETINS (SPB) MODIFY THE PROTOTYPE SERIES SET NOTED ABOVE. THE LISTED SPB REPRESENTS THE LATEST MODIFICATION INCORPORATED TO THIS PROTOTYPE SERIES SET AT ORIGINAL RELEASE. THE ISSUE/REVISION RECORD COLUMN ABOVE LISTS ANY REVISIONS OR SPB INCORPORATED TO THIS SET AFTER THE ORIGINAL RELEASE. CONTACT RACETRAC ENGINEERING AND CONSTRUCTION FOR ANY SUBSEQUENT BULLETINS NOT INCORPORATED HEREIN.

PROFESSIONAL SEAL

PROJECT NUMBER
 2018157.19

SHEET TITLE
INTERIOR ELEVATIONS

SHEET NUMBER
A501