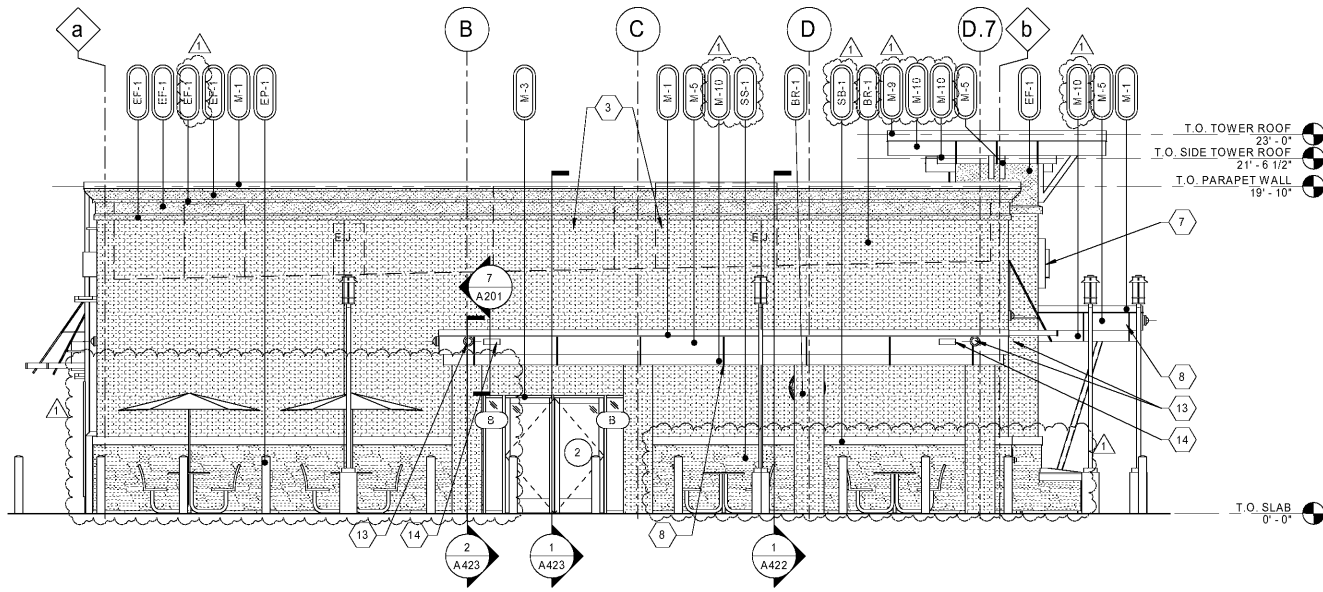
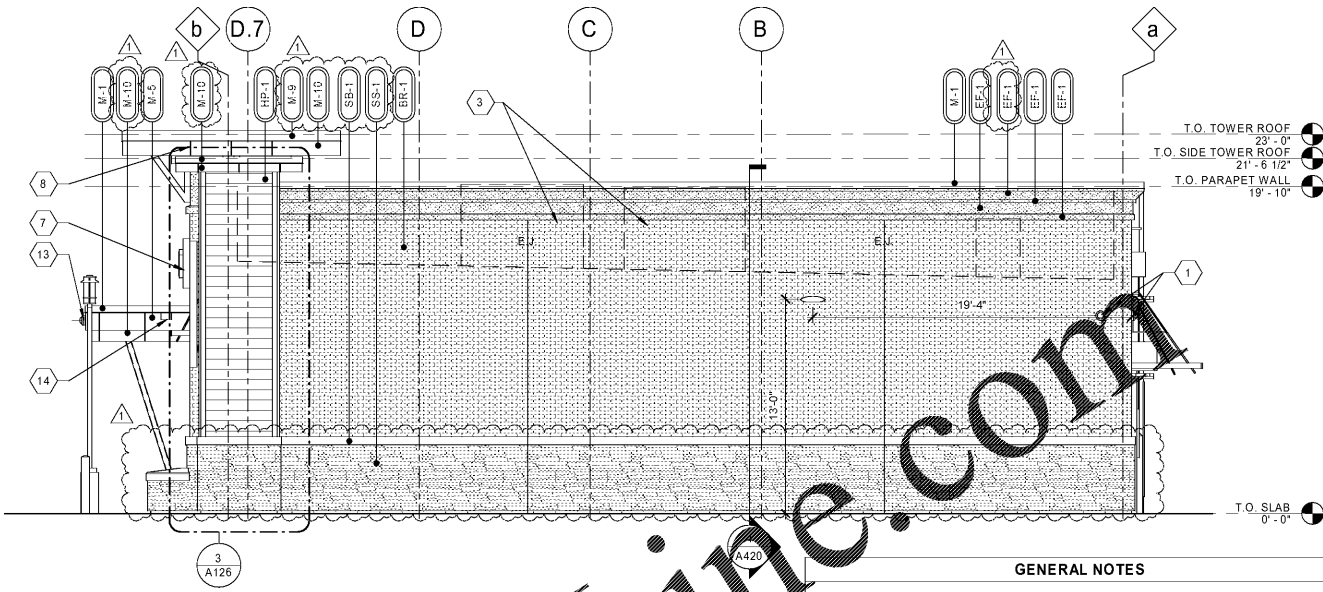


DATE	DESCRIPTION
01/25/19	PERMIT SET
03/16/20	REFRESH TO 2020.0113

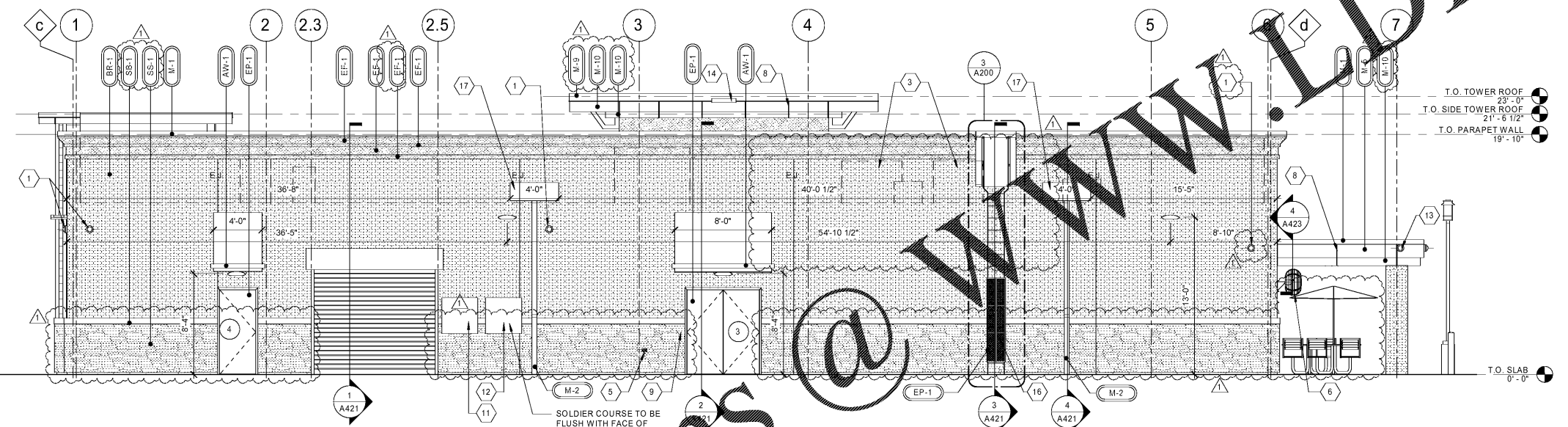
STANDARD PLAN BULLETINS (SPB) MODIFY THE PROTOTYPE SERIES SET NOTED ABOVE. THE LISTED SPB REPRESENTS THE LATEST MODIFICATION INCORPORATED TO THIS PROTOTYPE SERIES SET AT ORIGINAL RELEASE. THE ISSUE/REVISION RECORD COLUMN ABOVE LISTS ANY REVISIONS OR SPB INCORPORATED TO THIS SET AFTER THE ORIGINAL RELEASE. CONTACT RACETRAC ENGINEERING AND CONSTRUCTION FOR ANY SUBSEQUENT BULLETINS NOT INCORPORATED HEREIN.



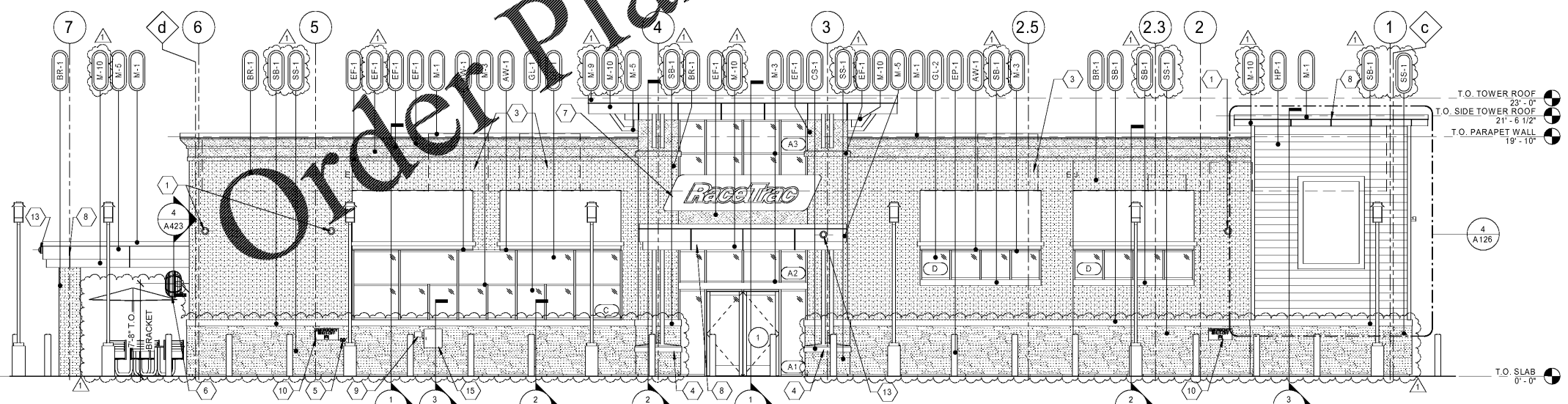
4 LEFT ELEVATION
 3/16" = 1'-0"



3 RIGHT ELEVATION
 3/16" = 1'-0"



2 REAR ELEVATION
 3/16" = 1'-0"



1 FRONT ELEVATION
 3/16" = 1'-0"

- GENERAL NOTES**
- CONTRACTOR SHALL VERIFY ALL EXTERIOR MATERIAL COLOR AND FINISHES WITH THE ARCHITECT. ANY DISCREPANCIES NOTED SHALL BE BROUGHT TO THE ATTENTION OF THE ARCHITECT FOR CLARIFICATION.
 - PROVIDE EXPANSION JOINTS (EJ) AT ALL LOCATIONS WHERE EIFS ABUTS A DISSIMILAR MATERIAL OR WHERE OTHERWISE REQUIRED BY MANUFACTURER.
 - PROVIDE EXPANSION JOINTS (EJ) AS LOCATED ON EXTERIOR ELEVATION. SPECIFICATION FOR JOINT SEALANT SHALL BE 'PRECAST WHITE' SL-2 BY TREMCO.
 - MAXIMUM SPACING OF EXPANSION JOINTS SHALL BE 15'-0" O.C. OR PER MANUFACTURER RECOMMENDATION.
 - REFER TO LIGHTING PLANS FOR LIGHTING FIXTURE LOCATION AND SCHEDULE.
 - REFER TO STRUCTURAL DRAWINGS FOR JOIST AND BEAM BEARING AND FOUNDATIONS.
 - REFER TO REFLECTED CEILING PLANS FOR COMPLETE DIMENSIONS OF ACM JOINT LOCATIONS.

- ELEVATION KEYNOTES**
- WALL MOUNTED SECURITY CAMERA
 - NOT USED
 - MECHANICAL EQUIPMENT BEYOND
 - REFER TO DETAILS ON SHEET A431 FOR CAST STONE SHAPE
 - HOSE BIB; REFER TO PLUMBING DRAWINGS
 - PATIO FAN; REFER TO SPECIFICATIONS
 - ILLUMINATED SIGN PANEL BY OWNER MOUNTED ON RACEWAY
 - ACM PANEL REVEAL LINE; REFER TO REFLECTED CEILING PLAN FOR DIMENSIONS
 - INTERCOM AND SPEAKER
 - EMERGENCY FUEL SHUT OFF SWITCH; MOUNT TOP OF SIGN AT 48" A.F.F.
 - LOCATION OF ELECTRICAL SERVICE C/T AND METER
 - GENERATOR TAP BOX - SEE ELECTRICAL FOR LOCATION
 - SECURITY CAMERA MOUNTED TO FASCIA
 - OVERFLOW SPILL SCUPPER
 - PACKAGE PASSER; REFER TO EQUIPMENT PLAN
 - PROVIDE METAL GUARD GATE AT LADDER TO 8'-0" A.F.F. WITH LOCKING HASP
 - 4'-0" WIDE X 1'-7" HIGH SCUPPER; REFER TO DETAILS 9 & 10 ON SHEET A201

EXTERIOR MATERIAL SCHEDULE

AWNING	ALUMINUM AWNING	SELECTED BY RACETRAC
AW-1	ALUMINUM AWNING	SELECTED BY RACETRAC
BRICK	LAREDO BRICK	MORTAR COLOR "LIGHT BUFF"
BR-1	BORAL	LAREDO BRICK
CAST STONE	CONTINENTAL CAST STONE OR APPROVED OTHER	COLOR 1102 NATURAL STONE; MORTAR COLOR "LIGHT BUFF". SEAL WITH (SL-5) SEALANT.
CEMENT BOARD	JAMES HARDIE	ARTISAN V-GROOVE SIDING
HP-1	JAMES HARDIE	ARTISAN V-GROOVE SIDING
EIFS	STO	STO THERM CI
GLAZING	GL-1	1" NON-IMPACT RATED INSULATED GLAZING
GLAZING	GL-2	1" NON-IMPACT RATED ACID ETCHED INSULATED GLAZING
METAL	M-1	PREFINISHED 4" 2-PIECE COMPRESSION METAL COVER
METAL	M-2	VISTAWALL (OR APPROVED ALTERNATE)
METAL	M-3	ALCOA
METAL	M-4	VERSATEX
METAL	M-5	ALCOA
METAL	M-6	ALCOA
PAINT	EP-1	SHERWIN WILLIAMS
ROOFING	DURO	DUROLAST
STACKED STONE	SS-1	BORAL
STONE BAND	SB-1	BORAL
TREX	TX-1	SELECT COMPOSITE
WINDOW FILM	WF-1	WINDOW FILM; 3M
WINDOW FILM	WF-2	WINDOW FILM; OPAQUE