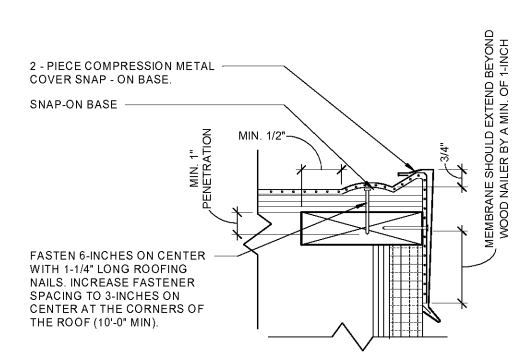
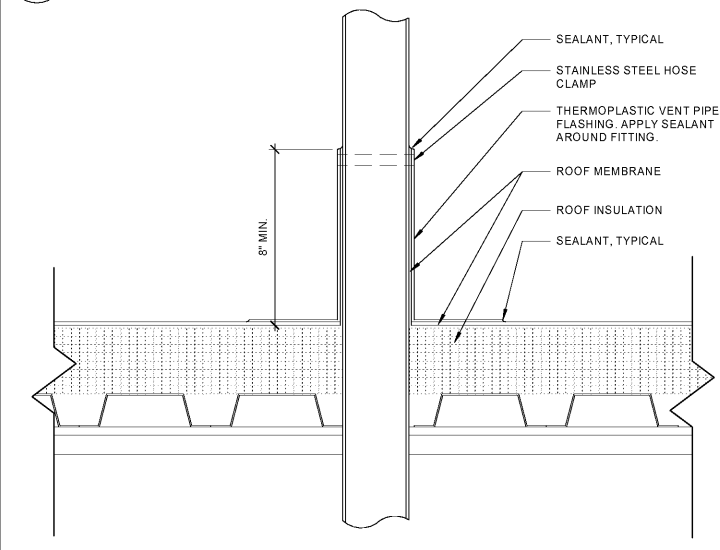


12 TOWER ACCESS DOOR
1 1/2" = 1'-0"

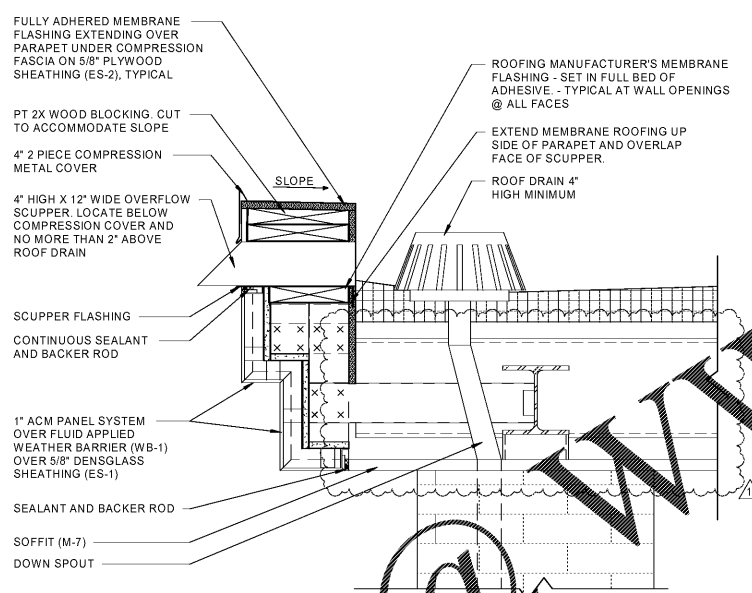


NOTE:
1. THE USE OF THIS DETAIL IS NOT TO EXCEED A 2-INCH PER 12-INCH SLOPE.
2. THE FASTENERS USED TO ATTACH THE BASE TO WOOD NAILERS, AND THE MEMBRANE TO THE FACE OF THE NAILERS, MUST BE SPACED NO GREATER THAN 6-INCHES ON CENTER. THE FASTENER SPACING MUST BE INCREASED TO 3-INCHES ON CENTER WHEN ATTACHING THE BASE WITHIN 10-FOOT (MIN.) OF THE OUTSIDE CORNERS OF THE BUILDING.
3. ALLOW FOR 1/8-INCH EXPANSION GAP BETWEEN 10-FOOT LENGTHS OF SNAP-ON BASE. OVERLAP THE SNAP-ON COVERS BY 2-INCHES BETWEEN 10-FOOT LENGTHS.

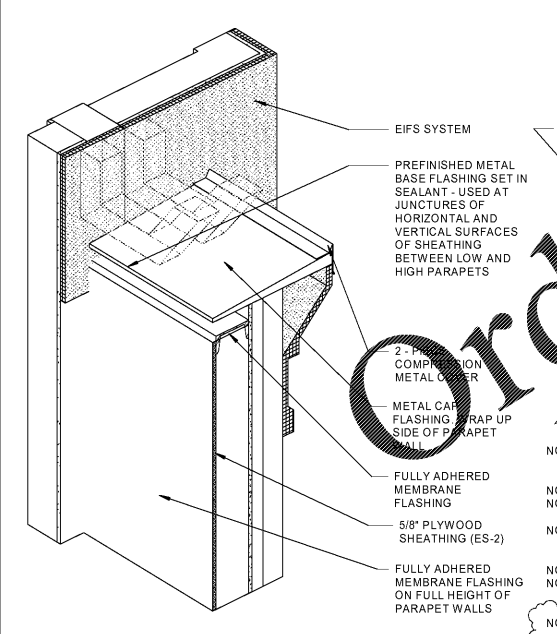
11 2-PIECE COMPRESSION EDGE
3" = 1'-0"



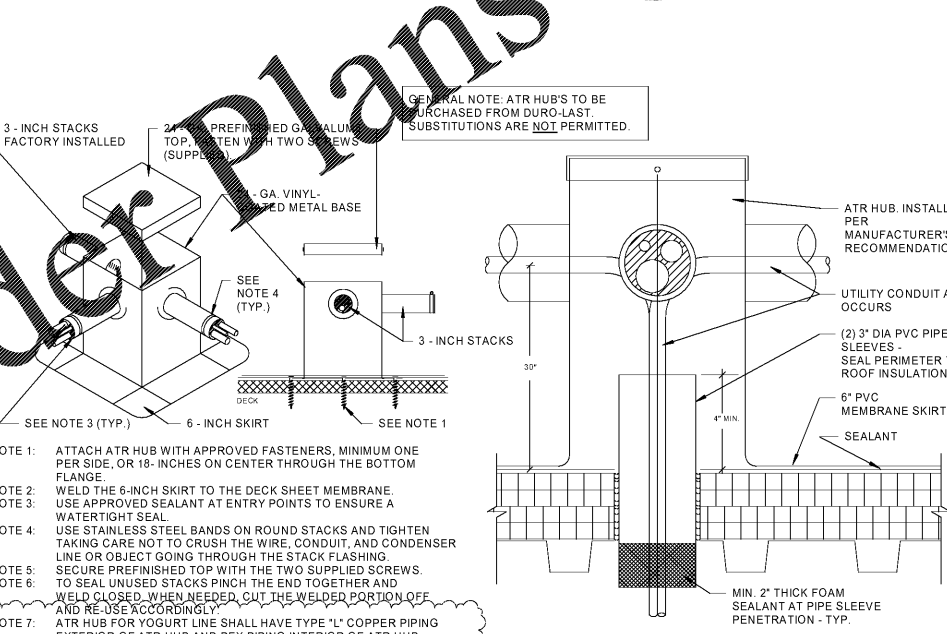
8 TYPICAL PIPE ROOF PENETRATION DETAIL
3" = 1'-0"



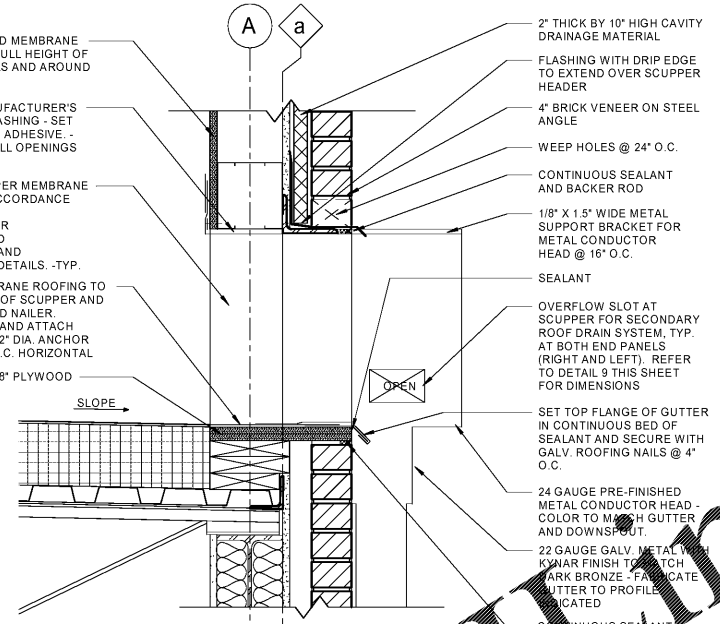
7 OVERFLOW SCUPPER DETAIL
1 1/2" = 1'-0"



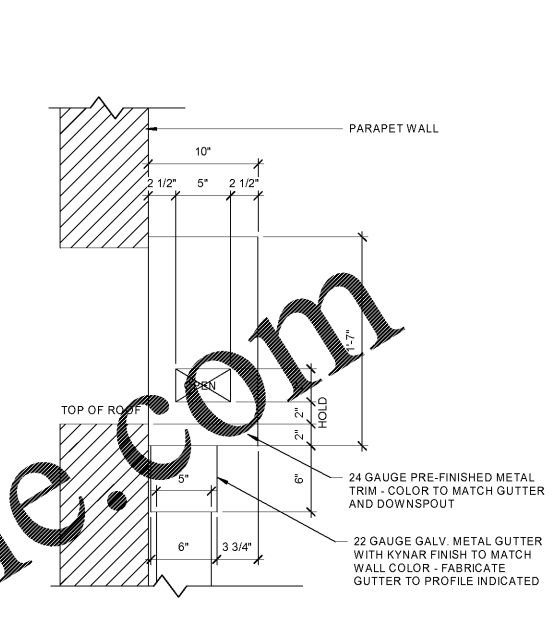
4 CORNICE AXONOMETRIC



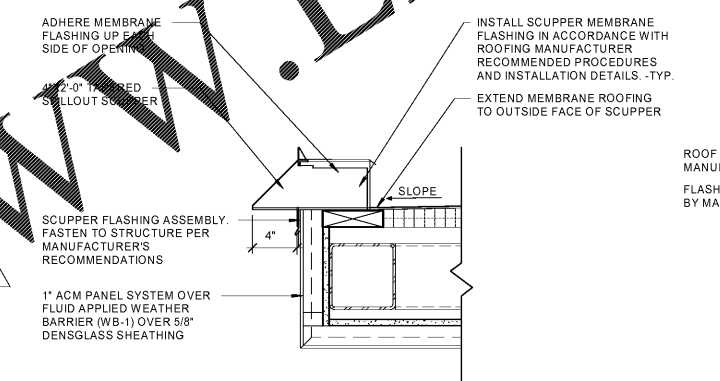
3 ATR HUB
12" = 1'-0"



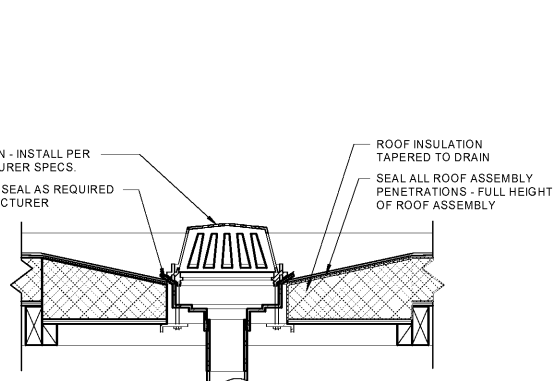
10 ENLARGED SCUPPER DETAIL
1 1/2" = 1'-0"



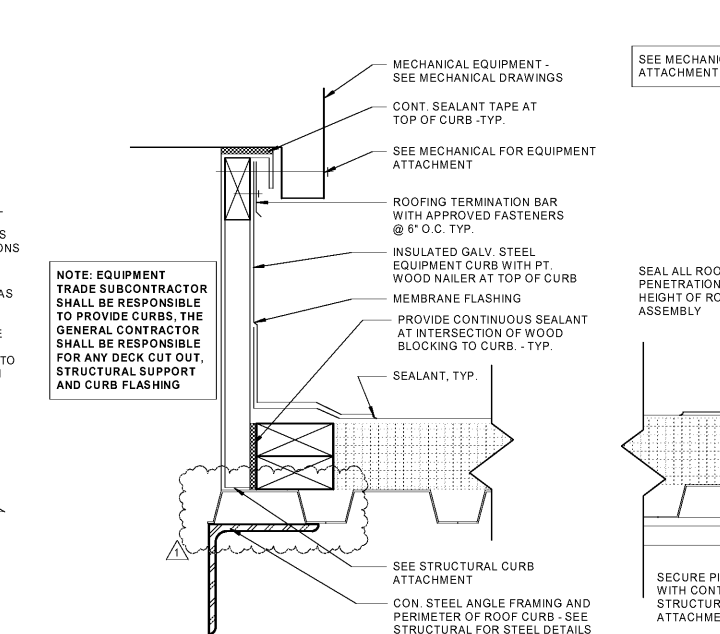
9 ENLARGED SCUPPER SIDE ELEVATION
1 1/2" = 1'-0"



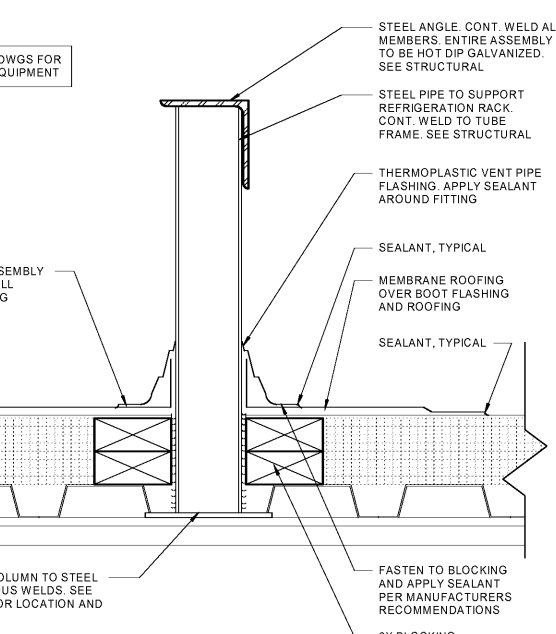
6 SCUPPER DETAIL AT HIGH TOWER
1 1/2" = 1'-0"



5 ROOF DRAIN DETAIL
1 1/2" = 1'-0"



2 MECH/FAN CURB DETAIL
3" = 1'-0"



1 REFRIGERATION SUPPORT RACK
3" = 1'-0"

ISSUE/REVISION RECORD

DATE	DESCRIPTION
01/25/19	PERMIT SET
03/16/20	REFRESH TO 2020.0113

PROJECT NAME
HWY 316 @ 81

BETHLEHEM
GA 30620
839 LOGANVILLE HWY

RACETRAC STORE NUMBER
#1304

PROTOTYPE SERIES 5.5K 2.0
2018 LH M0 0405

PLAN MODIFICATION NOTICE
SPB NO. 0405 DATE 12/18/18

STANDARD PLAN BULLETINS (SPB) MODIFY THE PROTOTYPE SERIES SET NOTED ABOVE. THE LISTED SPB REPRESENTS THE LATEST MODIFICATION INCORPORATED TO THIS PROTOTYPE SERIES SET AT ORIGINAL RELEASE. THIS ISSUE/REVISION RECORD COLUMN ABOVE LISTS ANY REVISIONS OR SPB INCORPORATED IN THIS SET AFTER THE ORIGINAL RELEASE. CONTACT RACETRAC ENGINEERING AND CONSTRUCTION FOR ANY SUBSEQUENT BULLETINS NOT INCORPORATED HEREIN.

PROFESSIONAL SEAL

PROJECT NUMBER
2018157.19

SHEET TITLE
ROOF DETAILS

SHEET NUMBER
A201