

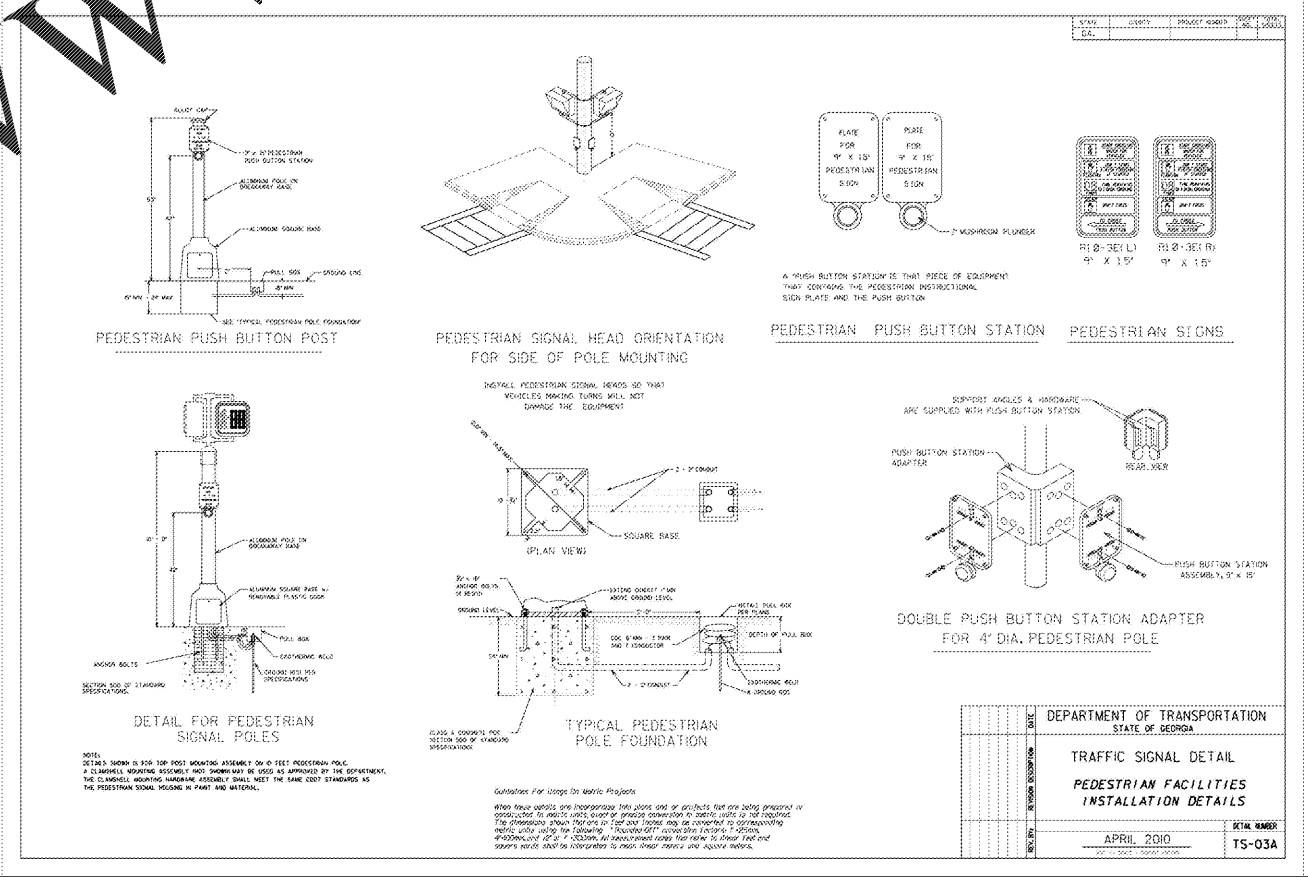
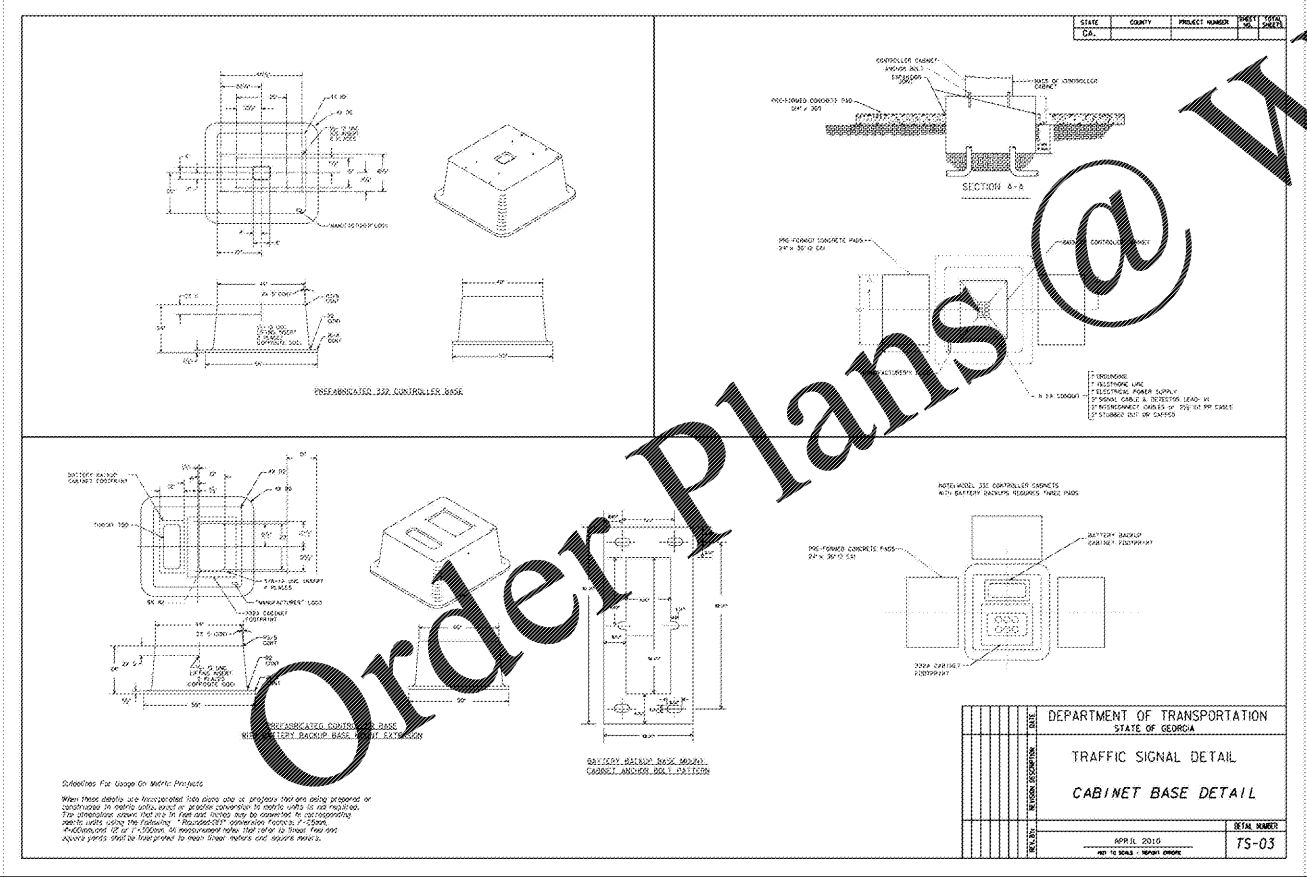
DEPARTMENT OF TRANSPORTATION
STATE OF GEORGIA
TRAFFIC SIGNAL DETAIL
PULLBOX ASSEMBLY AND INSTALLATION
APRIL 2010
TS-02

TEMPLE EDGE-LIT
Internally-Illuminated LED Signs

Available for order
Spring 2012

- Manufactured to the highest quality standards.
- High-intensity LED lighting for incredibly vibrant illumination.
- 60,000 hour LEDs until burn (approx. 14 years of optimal efficiency).
- 90% energy saving over traditional fluorescent signs.
- Very light weight - 2.5 lbs. per sq. ft.
- Flip down cover for access to the LED panels and sign face.
- Can use same 3.5" deep frame design for both double and single-sided signs.
- Sign lengths available: 48", 72", & 96" Visual Opening.
- Sign heights available: 15", 18", & 24" Visual Opening.

www.TempleEdgeLit.com
800.633.3221



Order Plans @ www.Landline.com

DATE

NO.

W&A Engineering
CIVIL ENGINEERING - LANDSCAPE ARCHITECTURE
SURVEYING - SOIL AND ENVIRONMENTAL CONSULTING
TRAFFIC ENGINEERING - LEGISLATIVE DEVELOPMENT

THESE PLANS ARE LEGAL
COPYRIGHT LAWS. ANY
USE OF SAME WITHOUT
THE EXPRESSED
WRITTEN PERMISSION
OF RACETRAC, INC. IS
PROHIBITED.

RaceTrac

RACETRAC PETROLEUM, INC.
200 GALLERIA PARKWAY SE
SUITE 800 ATLANTA, GA 30339
(770) 431-7600

DETAILS
RACETRAC 316@51

859 Loganville Hwy
Bethlehem, Georgia
Barrow County

DRAWN-BY: AGRUNER
DATE: 04.26.2019
SCALE:
DRAWING NAME:
Traffic-17293.dwg
SI-6
SHEET NO. VERSION