

Symbol	Label	Qty	Catalog Number	Description	Lamp	File	Lumens	LLF	Watts
□	704	38	SCV-LED-10L-SC-UNV-DIM-50-WHT	SCOTTSDALE VERTEX PETROLEUM CANOPY LED LUMINAIRE	LEDS.	SCV-LED-10L-SC-50-IES	Absolute	1.00	66
○	B	8	A2/B1-05	WITH WHITE TRIM AND RECESSED WHITE PLASTIC LENS	LEDS. LUMEN RATING = 648 LMS.	LR6ies	647	0.90	11.5
○	C2	9	SP2-ANG-12LED-3K-700-FCO	SPECTRA SMALL SCALE POST TOP LUMINAIRE FROSTED GLASS DIFFUSER.	12 LEDS	SP2-ANG-12LED-3K-700-FCO-PR-Cies	1517	0.90	27.3

Symbol	Label	Qty	Catalog Number	Description	Lamp	File	Lumens	LLF	Watts
□	702	9	MRM-LED-30L-SL-FI-UNV-DIM-50-70CRI	MIRANDA - MRM OUTDOOR LED AREA LIGHT	LEDS.	MRM-LED-30L-SL-FI-50-70CRI-IES	Absolute	1.00	247
□	702S	2	MRM-LED-30L-SL-FI-UNV-DIM-50-70CRI-IL	MIRANDA - MRM OUTDOOR LED AREA LIGHT (SHIELDED)	LEDS.	MRM-LED-30L-SL-FI-50-70CRI-IES	Absolute	1.00	247
□	501	3	XWM-FT-LED-06L-50-UE-BRZ	MIRANDA WALL SCONCE (XWM)	LEDS.	LSI XWM-FT-LED-06-50-IES	Absolute	1.00	59
□	502	3	XWM-FT-LED-04L-50-UE-BRZ	MIRANDA WALL SCONCE (XWM)	LEDS.	LSI XWM-FT-LED-04-50-IES	Absolute	1.00	40

Description	Symbol	Avg	Max	Min	Max/Min	Avg/Min
Beyond Property Line	+	0.0 fc	0.7 fc	0.0 fc	N/A	N/A
Canopy	+	29.5 fc	33.9 fc	18.2 fc	1.9:1	1.6:1
Canopy (EDO)	+	18.3 fc	25.5 fc	8.6 fc	3.0:1	2.1:1
Site	+	3.4 fc	19.4 fc	0.0 fc	N/A	N/A
Vehicle	X	4.5 fc	19.4 fc	0.1 fc	194.0:1	44.0:1
Property Line	+	0.3 fc	2.1 fc	0.0 fc	N/A	N/A

- GENERAL NOTES**
- ALL FIXTURES UTILIZED IN THIS SITE PHOTOMETRIC PLAN ARE FULL CUTOFF.
  - MOUNT AREA LUMINAIRE TYPES '702' AND '702S' AT 28'-0" AFG (INCLUDING POLE BASE)
  - FILE NUMBERS PROVIDED FOR PHOTOMETRY REFERENCE ONLY. CATALOG NUMBERS SHALL BE UTILIZED FOR ORDERING FIXTURES.
  - COLOR TEMPERATURE OF FIXTURES SHALL BE PROVIDED AS FOLLOWS
    - AREA LIGHTING - 5700K
    - BUILDING MOUNTED - 5700K
    - DECORATIVE POLE - 5000K
    - CANOPY - 5700K
    - CANOPY DOWNLIGHTS - 4000K

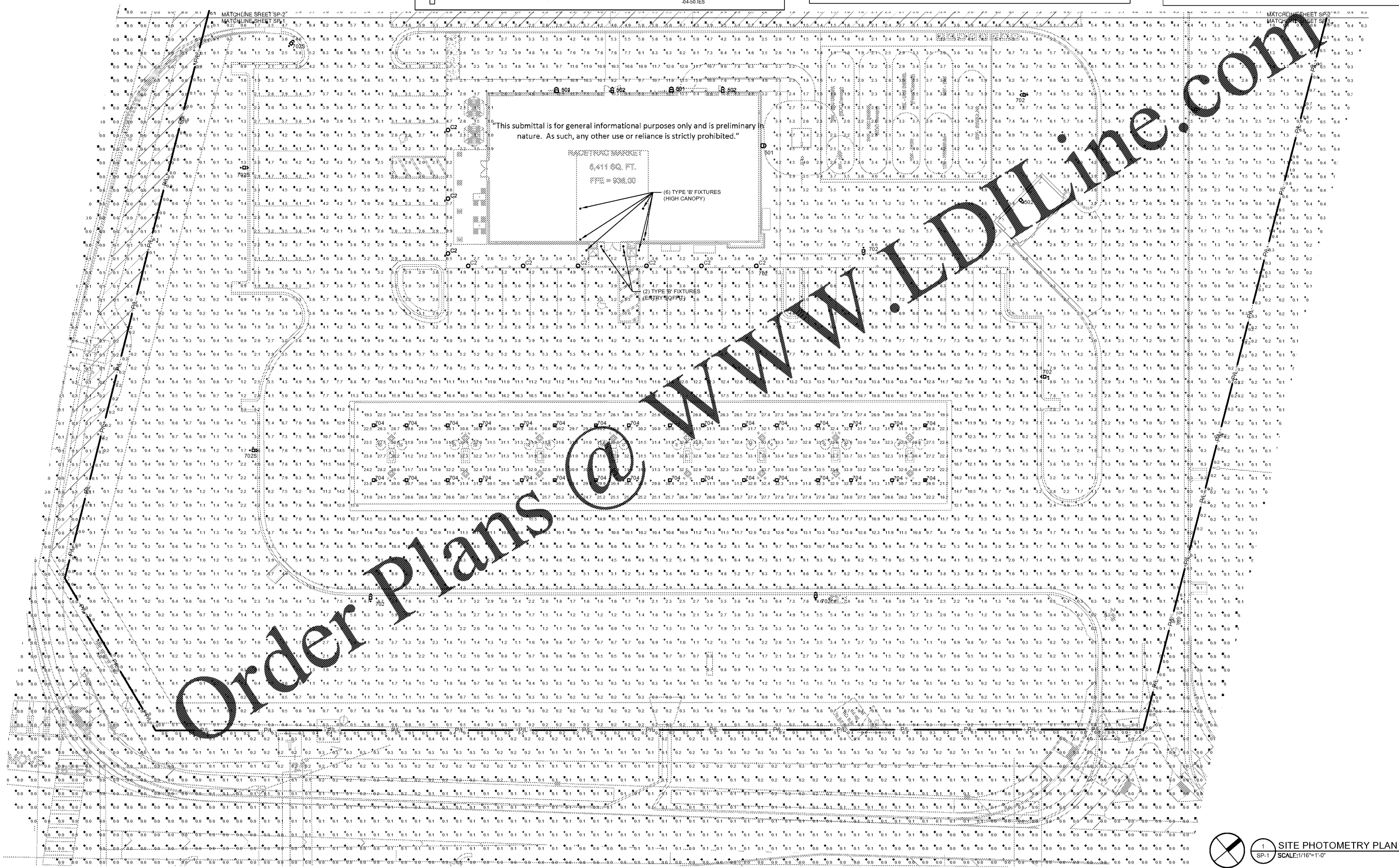
**RaceTrac**  
GOVERNMENT NOTICE

THESE PLANS ARE SUBJECT TO FEDERAL COPYRIGHT LAWS; ANY USE OF SAME WITHOUT THE EXPRESSED WRITTEN PERMISSION OF RACETRAC PETROLEUM, INC. IS PROHIBITED. 2016 RACETRAC PETROLEUM, INC.

**DESIGN PROFESSIONALS**

**GPD GROUP**  
Professional Corporation

520 South Main St., Suite 2531  
Akron, OH 44311



**ISSUE/REVISION RECORD**

DATE	DESCRIPTION
01/25/19	PERMIT SET
09/17/19	PHOTOMETRIC REVISION

**PROJECT NAME**  
**HWY 316 @ 81**

**BETHLEHEM GA**  
839 LOGANVILLE HIGHWAY

**RACETRAC STORE NUMBER**  
**#1304**

**PROTOTYPE SERIES 5.5K 2.0**  
**2018 LH MO 0405**

**PLAN MODIFICATION NOTICE**

SPB NO. 0405 DATE 12/18/16

STANDARD PLAN BULLETINS (SPB) MODIFY THE PROTOTYPE SERIES SET NOTED ABOVE. THE LISTED SPB REPRESENTS THE LATEST MODIFICATION INCORPORATED TO THIS PROTOTYPE SERIES SET AT ORIGINAL RELEASE. THE ISSUE/REVISION RECORD COLUMN ABOVE LISTS ANY REVISIONS OR SPB INCORPORATED IN THIS SET AFTER THE ORIGINAL RELEASE. CONTACT RACETRAC ENGINEERING AND CONSTRUCTION FOR ANY SUBSEQUENT BULLETINS NOT INCORPORATED HEREIN.

**PROFESSIONAL SEAL**

REGISTERED PROFESSIONAL ENGINEER  
STATE OF GEORGIA  
9/18/2019

**PROJECT NUMBER**  
20181514

**SHEET TITLE**  
**SITE PHOTOMETRY PLAN**

**SHEET NUMBER**  
**SP-1**

1 SITE PHOTOMETRY PLAN  
SP-1 SCALE: 1/16"=1'-0"