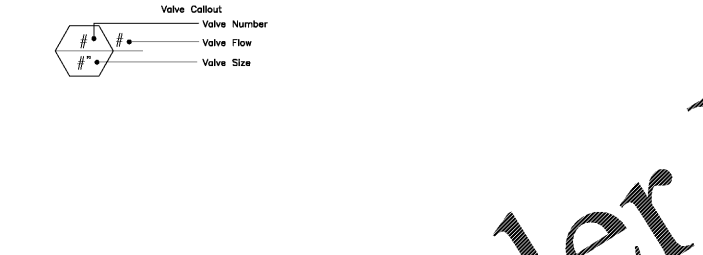


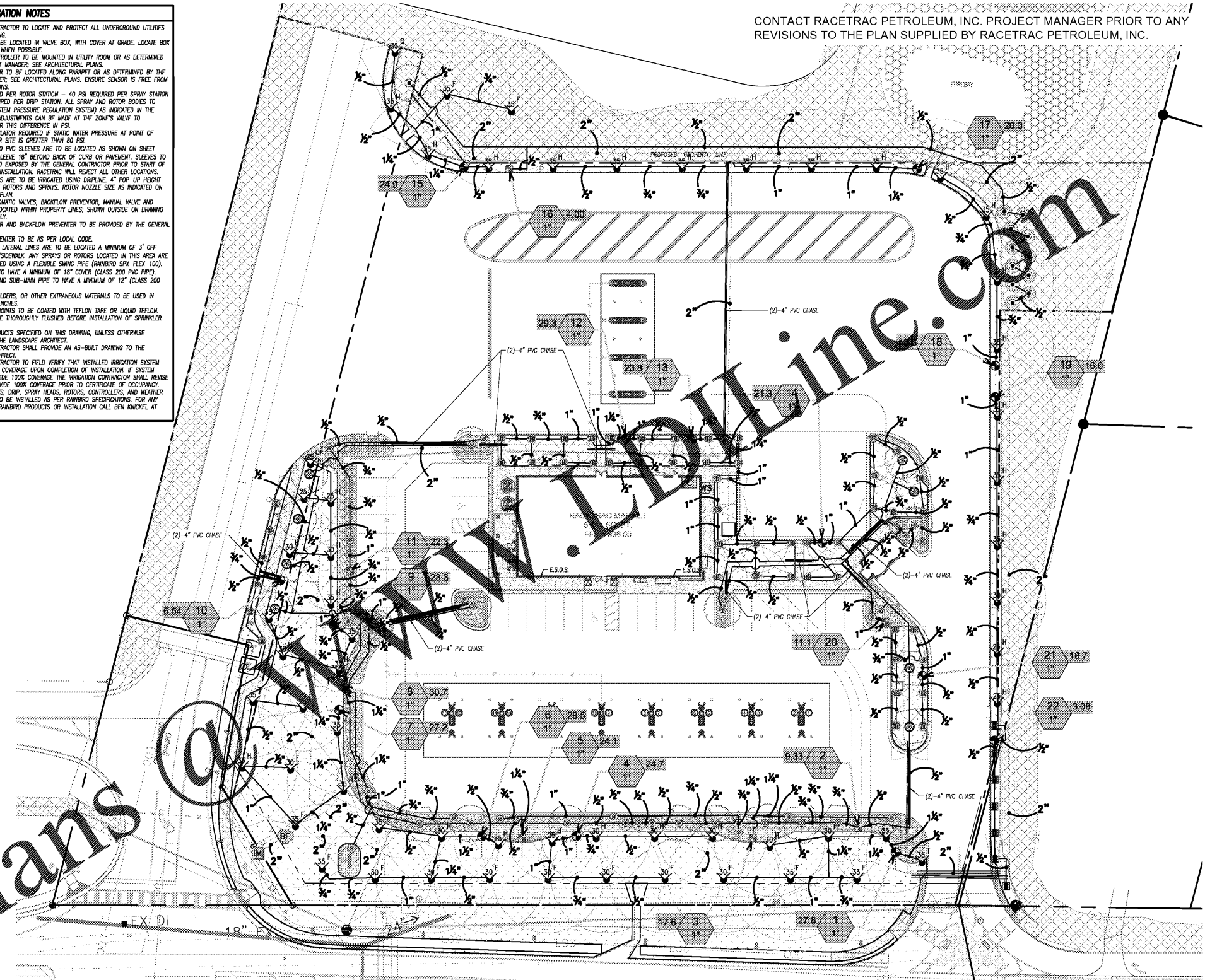
IRRIGATION SCHEDULE

| SYMBOL | MANUFACTURER/MODEL/DESCRIPTION | QTY | PSI | RADIUS |
|--------|---|-----------|-----|--------|
| | Rain Bird 1804-PRS 15 Strip Series Turf Spray 4.0" Pop-Up Sprinkler with Co-Molded Wiper Seal. 1/2" NPT Female Threaded Inlet. Pressure Regulating. | 5 | 30 | |
| | Rain Bird 1804-PRS ADJ Turf Spray 4.0" Pop-Up Sprinkler with Co-Molded Wiper Seal. 1/2" NPT Female Threaded Inlet. Pressure Regulating. | 45 | 30 | |
| | Rain Bird 1804-PRS HE-VAN Series Turf Spray 4.0" Pop-Up Sprinkler with Co-Molded Wiper Seal. 1/2" NPT Female Threaded Inlet. Pressure Regulating. | 1 | 30 | |
| | Rain Bird R-VAN-STRIP 1804-SAM-P45 Turf Rotary, 5' x15' (LCS and RCS), 5' x30' (SST) Hand Adjustable Multi-Stream Rotary w/ 1800 turf spray body on 4.0" pop-up, with check valve and 45 psi in-stem pressure regulator. 1/2" NPT Female Threaded Inlet. | 7 | 35 | |
| | Rain Bird 5004-PL-PC,FC-MPR Turf Rotor, 4.0" Pop-Up, Plastic Riser, with Flow Shut-Off Device. Matched Precipitation Rotor (MPR Nozzle), Arc and Radius as per Symbol. 25 ft=red, 30 ft=green, 35ft=beige. | 8 | 35 | 24' |
| | Rain Bird 5004-PL-PC,FC-MPR Turf Rotor, 4.0" Pop-Up, Plastic Riser, with Flow Shut-Off Device. Matched Precipitation Rotor (MPR Nozzle), Arc and Radius as per Symbol. 25 ft=red, 30 ft=green, 35ft=beige. | 17 | 35 | 30' |
| | Rain Bird 5004-PL-PC,FC-MPR Turf Rotor, 4.0" Pop-Up, Plastic Riser, with Flow Shut-Off Device. Matched Precipitation Rotor (MPR Nozzle), Arc and Radius as per Symbol. 25 ft=red, 30 ft=green, 35ft=beige. | 35 | 35 | 34' |
| | Rain Bird XCZ-100-PRB-COM Wide Flow Drip Control Kit for Commercial Applications. 1" Ball Valve with 1" PESB Valve and 1" Pressure Regulating 40psi Quick-Check Basket Filter. 0.3gpm to 20gpm. | 7 | | |
| | Pipe Transition Point above grade Pipe transition point from PVC lateral to drip tubing with riser to above grade installation. | 17 | | |
| | Tree Ring Emitter Rainbird XFD-04-12. 0.4gph | 40 | | |
| | Area to Receive Dripline Rain Bird XFD-09-12 XFD On-Surface Pressure Compensating Landscape Dripline. 0.9 GPH emitters at 12" O.C. Dripline laterals spaced at 12" apart, with emitters offset for triangular pattern. UV Resistant. Specify XF insert fittings. | 7,050 Lf. | | |
| | Rain Bird PGA-PRS-D-Globe 1", 1-1/2", 2" Electric Remote Control Valve, Globe. With Pressure Regulator Module. | 15 | | |
| | Zam 975XL 1" Reduced Pressure Backflow device | 1 | | |
| | Rain Bird ESP8LXME with (02) ESPLXMS12 32 Station Commercial Controller. Mounted on a Plastic Wall Mount. | 1 | | |
| | Rain Bird RSD-BEx Rain Sensor, with metal latching bracket, extension wire. | 1 | | |
| | Water Meter 1" | 1 | | |
| | Irrigation Lateral Line: PVC Class 200 SDR 21 | 5,032 Lf. | | |
| | Irrigation Mainline: PVC Class 200 SDR 21 | 2,106 Lf. | | |



GENERAL IRRIGATION NOTES

- IRRIGATION CONTRACTOR TO LOCATE AND PROTECT ALL UNDERGROUND UTILITIES PRIOR TO DIGGING.
- ALL VALVES TO BE LOCATED IN VALVE BOX, WITH COVER AT GRADE. LOCATE BOX IN GRASS AREA WHEN POSSIBLE.
- AUTOMATIC CONTROLLER TO BE MOUNTED IN UTILITY ROOM OR AS DETERMINED BY THE PROJECT MANAGER. SEE ARCHITECTURAL PLANS.
- WEATHER SENSOR TO BE LOCATED ALONG PARAPET OR AS DETERMINED BY THE PROJECT MANAGER. SEE ARCHITECTURAL PLANS. ENSURE SENSOR IS FREE FROM ANY OBSTRUCTIONS.
- 60 PSI REQUIRED PER ROTOR STATION - 40 PSI REQUIRED PER SPRAY STATION - 40 PSI REQUIRED PER DRIP STATION. ALL SPRAY AND ROTOR BODIES TO HAVE PPS (IN-STEM PRESSURE REGULATION SYSTEM) AS INDICATED IN THE LEGEND. FLOW ADJUSTMENTS CAN BE MADE AT THE ZONE'S VALVE TO COMPENSATE FOR THIS DIFFERENCE IN PSI.
- PRESSURE REGULATOR REQUIRED IF STATIC WATER PRESSURE AT POINT OF CONNECTION FOR SITE IS GREATER THAN 80 PSI.
- 4" - 6" SCH 40 PVC SLEEVES ARE TO BE LOCATED AS SHOWN ON SHEET L2.1. EXTEND SLEEVE 18" BEYOND BACK OF CURB OR PAVEMENT. SLEEVES TO BE LOCATED AND EXPOSED BY THE GENERAL CONTRACTOR PRIOR TO START OF THE IRRIGATION INSTALLATION. RACETRAC WILL REJECT ALL OTHER LOCATIONS.
- ALL SHRUB BEES ARE TO BE IRRIGATED USING DRIFLINE. 4" POP-UP HEIGHT FOR TURF ZONE ROTORS AND SPRAYS. ROTOR NOZZLE SIZE AS INDICATED ON THE IRRIGATION PLAN.
- ALL PIPES, AUTOMATIC VALVES, BACKFLOW PREVENTOR, MANUAL VALVE AND METER TO BE LOCATED WITHIN PROPERTY LINES; SHOWN OUTSIDE ON DRAWING FOR CLARITY ONLY.
- IRRIGATION METER AND BACKFLOW PREVENTOR TO BE PROVIDED BY THE GENERAL CONTRACTOR.
- BACKFLOW PREVENTOR TO BE AS PER LOCAL CODE.
- MANLINE & ALL LATERAL LINES ARE TO BE LOCATED A MINIMUM OF 3' OFF BACK OF CURB/SIDEWALK. ANY SPRAYS OR ROTORS LOCATED IN THIS AREA ARE TO BE CONNECTED USING A FLEXIBLE SWING PIPE (RAINBIRD SPX-FLEX-100).
- ALL MANLINES TO HAVE A MINIMUM OF 18" COVER (CLASS 200 PVC PIPE).
- ALL LATERALS AND SUB-MAN PIPE TO HAVE A MINIMUM OF 12" (CLASS 200 PVC PIPE).
- NO ROCKS, BOULDERS, OR OTHER EXTRANEIOUS MATERIALS TO BE USED IN BACKFILLING TRENCHES.
- ALL THREADED JOINTS TO BE COATED WITH TEFLON TAPE OR LIQUID TEFLON.
- ALL LINES TO BE THOROUGHLY FLUSHED BEFORE INSTALLATION OF SPRINKLER HEADS.
- MUST USE PRODUCTS SPECIFIED ON THIS DRAWING, UNLESS OTHERWISE APPROVED BY THE LANDSCAPE ARCHITECT.
- IRRIGATION CONTRACTOR SHALL PROVIDE AN AS-BUILT DRAWING TO THE LANDSCAPE ARCHITECT.
- IRRIGATION CONTRACTOR TO FIELD VERIFY THAT INSTALLED IRRIGATION SYSTEM PROVIDES 100% COVERAGE UPON COMPLETION OF INSTALLATION. IF SYSTEM DOES NOT PROVIDE 100% COVERAGE THE IRRIGATION CONTRACTOR SHALL REVISE SYSTEM TO PROVIDE 100% COVERAGE PRIOR TO CERTIFICATE OF OCCUPANCY.
- ALL PIPE, VALVES, POP, SPRAY HEADS, ROTORS, CONTROLLERS, AND WEATHER SENSORS ARE TO BE INSTALLED AS PER RAINBIRD SPECIFICATIONS. FOR ANY QUESTIONS ON RAINBIRD PRODUCTS OR INSTALLATION CALL BEN KNICKEL AT 878-544-3249.

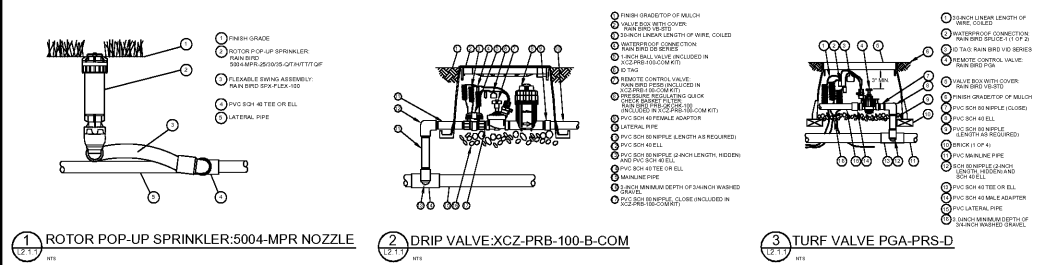


CONTACT RACETRAC PETROLEUM, INC. PROJECT MANAGER PRIOR TO ANY REVISIONS TO THE PLAN SUPPLIED BY RACETRAC PETROLEUM, INC.

VALVE SCHEDULE

| NUMBER | MODEL | SIZE | TYPE | QTY | HEADS | WIRE | DESIGN PSI | VALVE LOSS | PSI | PSI @ POC | PRECIP |
|--------|---------------------------|------|-------------------|-------|-----------|-------|------------|------------|-------|-----------|-------------|
| 1 | Rain Bird PGA-PRS-D-Globe | 1" | Turf Rotor | 7 | 7.80 | 747.8 | 35 | 0.31 | 45.13 | 63.26 | 0.74 in/h |
| 2 | Rain Bird XCZ-100-PRB-COM | 1" | Drip Emitter | 3 | 28 | 736.0 | 10 | 0.86 | 28.13 | 40.51 | 285.92 in/h |
| 3 | Rain Bird XCZ-100-PRB-COM | 1" | Area for Dripline | 17 | 1,171 Lf. | 673.4 | 20 | 17.90 | 40.38 | 54.54 | 1.44 in/h |
| 4 | Rain Bird PGA-PRS-D-Globe | 1" | Turf Rotor | 24 | 7 | 571.6 | 35 | 6.19 | 45.69 | 62.05 | 0.68 in/h |
| 5 | Rain Bird XCZ-100-PRB-COM | 1" | Area for Dripline | 24,08 | 1,605 Lf. | 541.3 | 20 | 22.50 | 46.89 | 62.90 | 1.44 in/h |
| 6 | Rain Bird PGA-PRS-D-Globe | 1" | Turf Rotor | 29.51 | 7 | 520.1 | 35 | 6.38 | 43.97 | 62.11 | 0.77 in/h |
| 7 | Rain Bird PGA-PRS-D-Globe | 1" | Turf Rotor | 27.18 | 7 | 370.4 | 35 | 6.29 | 47.38 | 64.63 | 0.70 in/h |
| 8 | Rain Bird XCZ-100-PRB-COM | 1" | Area for Dripline | 30.72 | 2,047 Lf. | 360.0 | 20 | 22.30 | 45.18 | 63.98 | 1.44 in/h |
| 9 | Rain Bird PGA-PRS-D-Globe | 1" | Turf Rotor | 23.33 | 10 | 329.0 | 35 | 6.13 | 45.36 | 61.18 | 0.89 in/h |
| 10 | Rain Bird PGA-PRS-D-Globe | 1" | Turf Spray | 6.54 | 6 | 308.1 | 30 | 5.62 | 39.44 | 48.36 | 1.48 in/h |
| 11 | Rain Bird XCZ-100-PRB-COM | 1" | Area for Dripline | 22.32 | 1,487 Lf. | 298.0 | 20 | 22.50 | 46.50 | 62.12 | 1.44 in/h |
| 12 | Rain Bird PGA-PRS-D-Globe | 1" | Turf Spray | 29.35 | 14 | 66.9 | 30 | 6.37 | 38.55 | 57.46 | 1.47 in/h |
| 13 | Rain Bird PGA-PRS-D-Globe | 1" | Turf Spray | 23.84 | 12 | 23.3 | 30 | 6.15 | 40.15 | 56.61 | 1.05 in/h |
| 14 | Rain Bird PGA-PRS-D-Globe | 1" | Turf Spray | 21.33 | 11 | 942.6 | 30 | 6.05 | 38.46 | 54.43 | 1.05 in/h |
| 15 | Rain Bird PGA-PRS-D-Globe | 1" | Turf Rotor | 24.90 | 6 | 352.9 | 35 | 6.20 | 43.25 | 60.77 | 0.61 in/h |
| 16 | Rain Bird XCZ-100-PRB-COM | 1" | Drip Emitter | 4.00 | 12 | 334.0 | 10 | 3 | 23.15 | 34.91 | 10.21 in/h |
| 17 | Rain Bird PGA-PRS-D-Globe | 1" | Turf Rotor | 19.98 | 6 | 317.3 | 35 | 6 | 46.82 | 61.81 | 0.61 in/h |
| 18 | Rain Bird PGA-PRS-D-Globe | 1" | Turf Rotor | 13.32 | 4 | 456.0 | 35 | 5.93 | 44.53 | 57.72 | 0.64 in/h |
| 19 | Rain Bird PGA-PRS-D-Globe | 1" | Turf Rotor | 16.04 | 6 | 472.8 | 35 | 5.96 | 45.07 | 58.93 | 0.64 in/h |
| 20 | Rain Bird XCZ-100-PRB-COM | 1" | Area for Dripline | 11.07 | 739.0 Lf. | 891.2 | 30 | 8.52 | 43.95 | 56.77 | 1.44 in/h |
| 21 | Rain Bird PGA-PRS-D-Globe | 1" | Turf Spray | 18.72 | 8 | 862.0 | 30 | 5.99 | 38.40 | 53.73 | 1.29 in/h |
| 22 | Rain Bird PGA-PRS-D-Globe | 1" | Turf Rotary | 3.08 | 7 | 667.6 | 35 | 5.34 | 40.82 | 52.54 | 0.47 in/h |
| | Common Wire | | | | | 2,106 | | | | | |

GOOT SPECIFIC DETAILS



GOOT SPECIFIC NOTES

- IRRIGATION IS NOT PROPOSED WITHIN THE GOOT RIGHT-OF-WAY. THE GOOT SURVEY IRRIGATION CONTROLLERS ARE LOCATED OUTSIDE THE RIGHT-OF-WAY. VALVE BOXES WILL NEED TO BE LOCKED OR LOCATED OUTSIDE THE RIGHT-OF-WAY.
- INCLUDE TRACER WIRES ON ALL MANLINE AND LATERAL PIPES.
- SHUT-OFF VALVE WILL BE LOCATED ON MAIN LINE FOR EMERGENCY PURPOSES.
- ALL POP-UP SPRINKLERS TO BE LOCATED AT LEAST 10' FROM THE EDGE OF GOOT PAVEMENT.
- A 5 FOOT DIAMETER MULCHED AREA SHOULD BE LEFT AROUND EACH TREE. MULCH SHOULD BE PULLED BACK AT LEAST 6" AWAY FROM THE TRUNKS OF TREES AND STEMS OF SHRUBS. DO NOT MOUND MULCH UP AGAINST THE TRUNKS OF TREES OR BURY THE STEMS OF SHRUBS WITH MULCH.

EXISTING UTILITIES NOTE

THE CONTRACTOR SHALL VERIFY ALL UTILITY LOCATIONS PRIOR TO DIGGING, INCLUDING GAS, ELECTRICAL, AND TELECOMMUNICATION LINES. EXISTING UTILITIES SHOWN ON PLAN ARE APPROXIMATE. ANY DAMAGE TO SUCH UTILITIES SHALL BE REPAIRED AT THE CONTRACTOR'S EXPENSE. W&A ENGINEERING SHALL BE NOTIFIED OF ANY DISCREPANCIES IMMEDIATELY.

EROSION CONTROL NOTES

EROSION AND SEDIMENT CONTROL MEASURES SHALL BE INSTALLED PRIOR TO ANY OTHER CONSTRUCTION ON THE SITE AND SHALL BE MAINTAINED UNTIL A PERMANENT GROUND COVER IS ESTABLISHED.

SOIL EROSION PREVENTION METHODS THAT ARE DEEMED NECESSARY ON THIS SITE WILL BE INSTALLED AND MAINTAINED IN ACCORDANCE WITH ALL FEDERAL, STATE AND LOCAL ORDINANCES AND CODES.



Know what's below.
Call before you dig.



| | |
|--|---|
| W&A Engineering CIVIL ENGINEERING - LANDSCAPE ARCHITECTURE ARCHITECTURE - SOIL AND ENVIRONMENTAL CONSULTING TRAFFIC ENGINEERING - LEISURE DEVELOPMENT | THESE PLANS ARE LEGAL COPYRIGHT LAWS. ANY USE OF SAME WITHOUT THE EXPRESSED WRITTEN PERMISSION OF RACETRAC PETROLEUM, INC. IS PROHIBITED. |
| RACETRAC PETROLEUM, INC. 200 GALLERIA PARKWAY SE SUITE 800 ATLANTA, GA 30339 (770) 431-7600 | IRRIGATION PLAN RACETRAC 316@81 839 Loganville Highway Bethlehem, Georgia Barrow County |
| DRAWN-BY: AGRUNER DATE: 02.28.2018 SCALE: 1" = 30' DRAWING NAME: Irrigation-17293.dwg SHEET NO. L2 VERSION | 03.03.2020 10.07.2019 DATE 2 REVISED PER DEVELOPER CHANGES 1 REVISED PER DEVELOPER CHANGES NO |