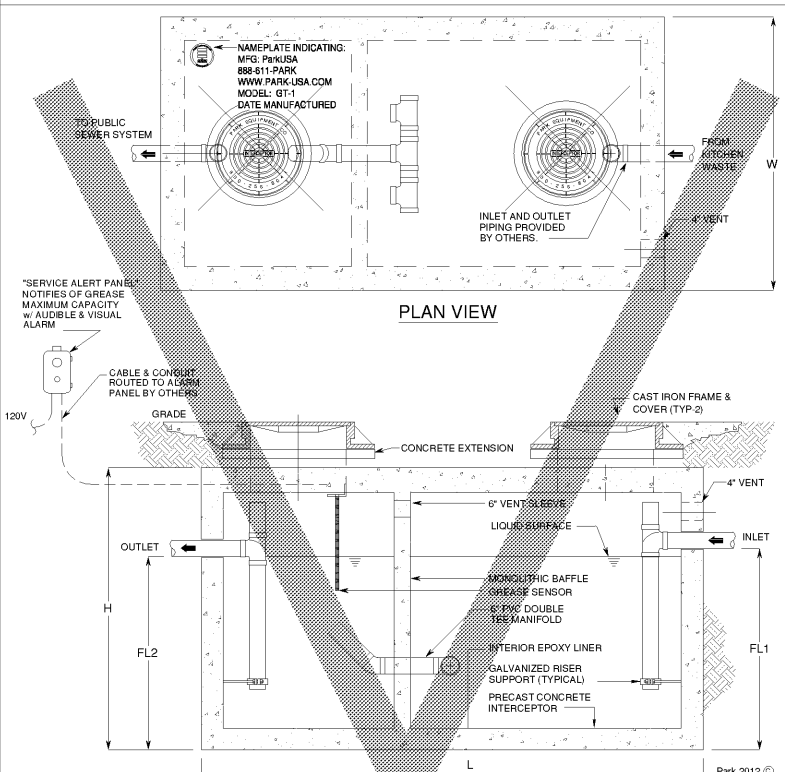
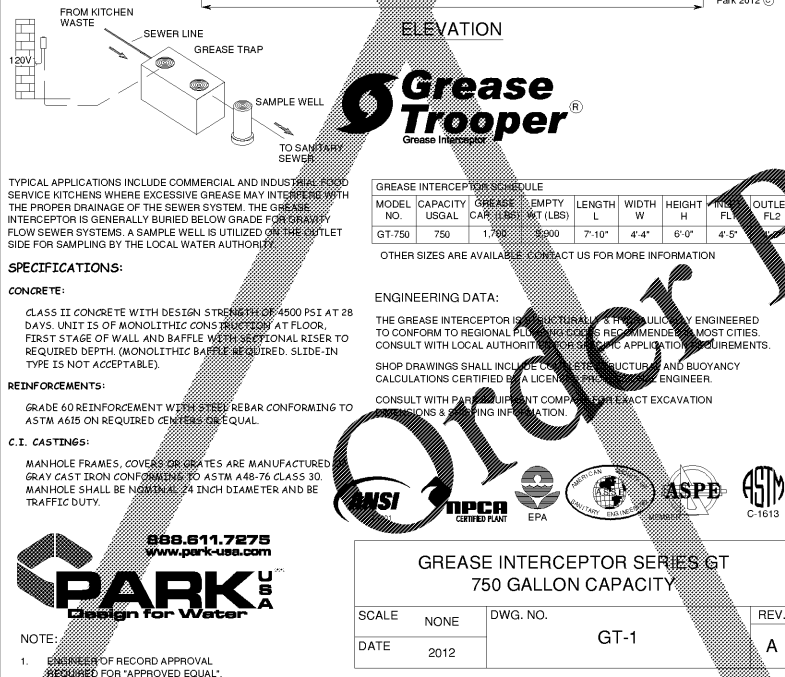


1 DISPENSER ISLAND DETAIL
SD2 NTS



2 CANOPY ACCESSORIES LAYOUT
SD2 NTS



4 GREASE TRAP (1500 GALLON CAPACITY) & SAMPLE WELL DETAILS OR "APPROVED EQUAL"
SD2 NTS

Grease Trooper
Grease Interceptor

MODEL NO.	CAPACITY US GAL	GREASE CARTRIDGE WT (LBS)	EMPTY LENGTH L	WIDTH W	HEIGHT H	INLET FL	OUTLET FL
GT-750	750	1,700	8,000	7'-10"	4'-4"	6'-0"	4'-5"

OTHER SIZES ARE AVAILABLE. CONTACT US FOR MORE INFORMATION.

ENGINEERING DATA:
THE GREASE INTERCEPTOR IS MANUFACTURED BY THE MANUFACTURER ENGINEERED TO CONFORM TO REGIONAL PLUMBING CODES RECOMMENDED BY MOST CITIES. CONSULT WITH LOCAL AUTHORITY FOR ANY SPECIAL APPLICATION REQUIREMENTS.
SHOP DRAWINGS SHALL INCLUDE CALCULATIONS OF STRUCTURE AND BUOYANCY CALCULATIONS CERTIFIED BY A LICENSED PROFESSIONAL ENGINEER.
CONSULT WITH PART SUPPLIER FOR ANY COMPACTOR EXCAVATION DIMENSIONS & BRACING INFORMATION.

REINFORCEMENTS:
GRADE 60 REINFORCEMENT WITH STEEL REBAR CONFORMING TO ASTM A615 ON REQUIRED CENTERS & EQUAL.

C.I. CASTINGS:
MANHOLE FRAMES, COVERS OR GRATES ARE MANUFACTURED GRAY CAST IRON CONFORMING TO ASTM A48-76 CLASS 30. MANHOLE SHALL BE NOMINAL 24 INCH DIAMETER AND BE TRAFFIC DUTY.

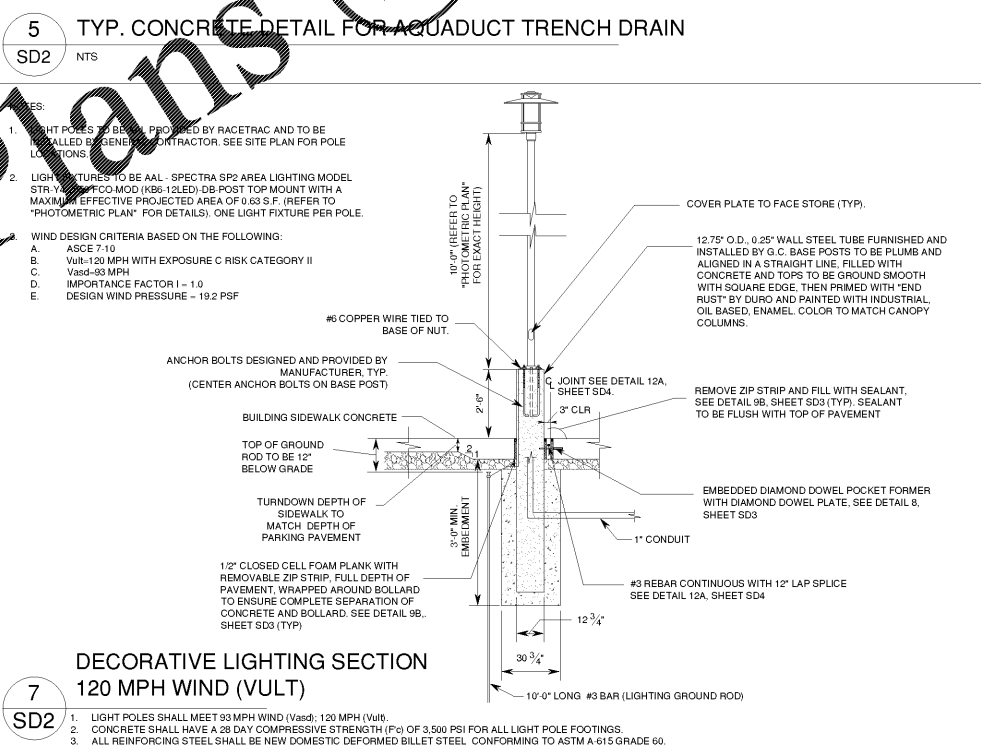
888.611.7275
www.park-usa.com

PARK USA
Design for Water

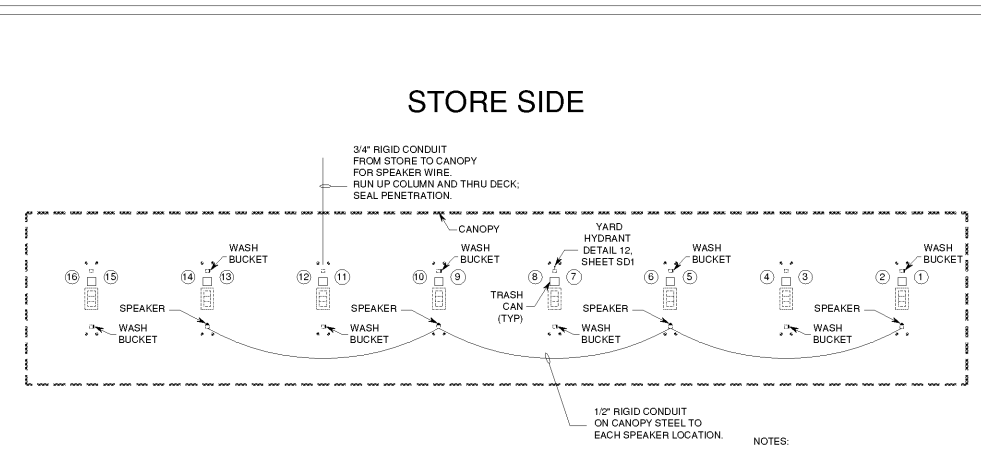
GREASE INTERCEPTOR SERIES GT
750 GALLON CAPACITY

SCALE	NONE	DWG. NO.	GT-1	REV.	A
DATE	2012				

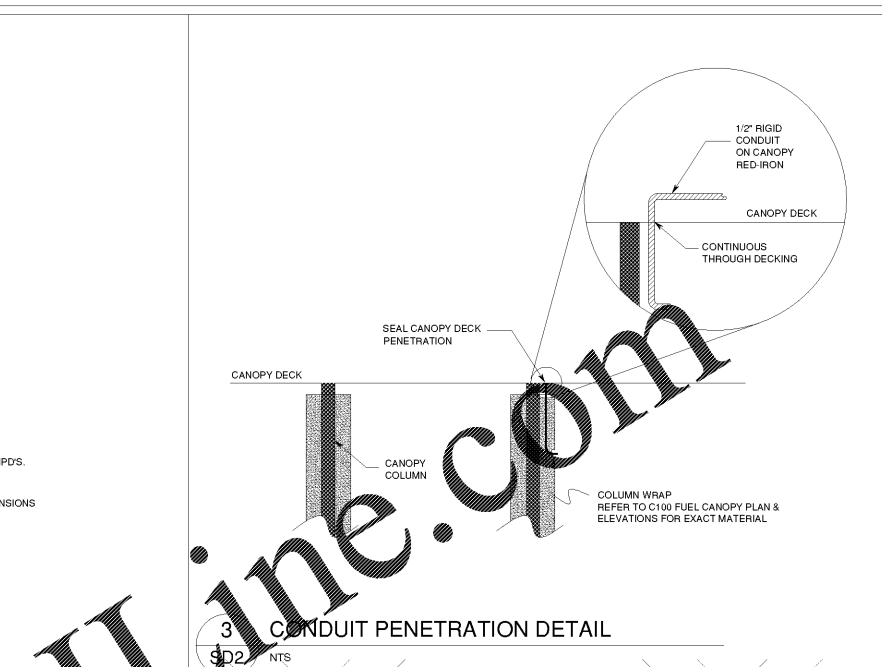
NOTE:
1. ENGINEER OF RECORD APPROVAL REQUIRED FOR "APPROVED EQUAL".



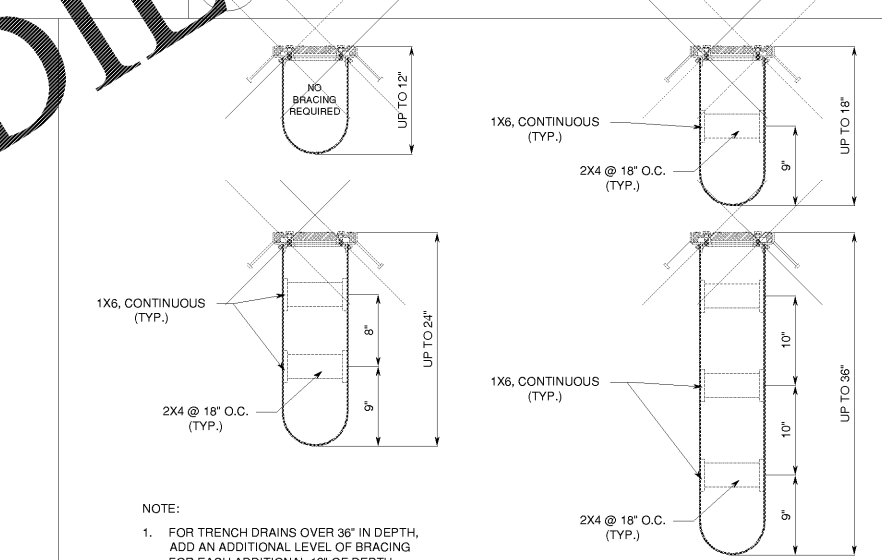
5 TYP. CONCRETE DETAIL FOR AQUADUCT TRENCH DRAIN
SD2 NTS



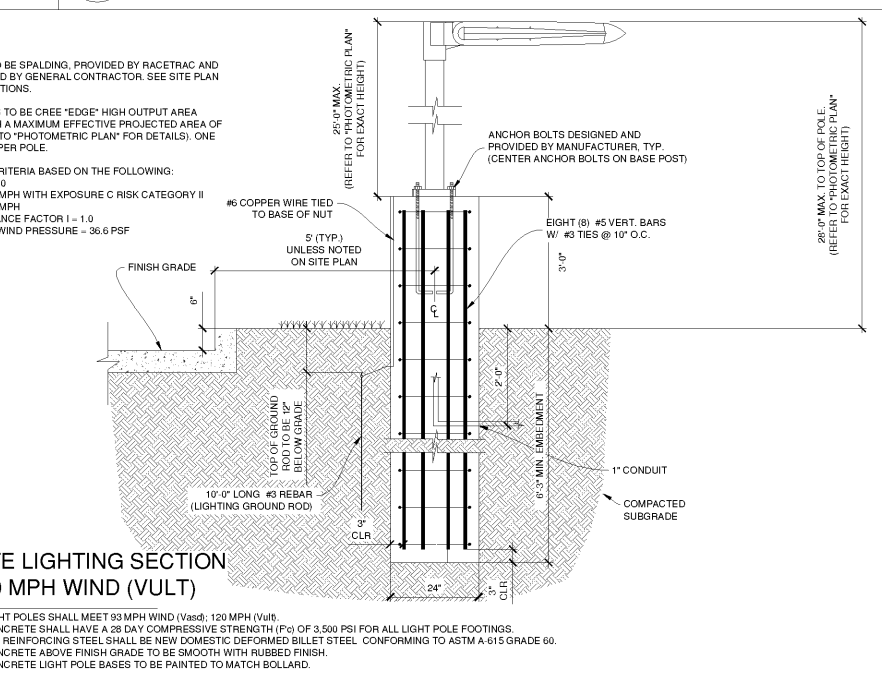
STORE SIDE
STREET SIDE



3 CONDUIT PENETRATION DETAIL
SD2 NTS



6 AQUADUCT TRENCH DRAIN BRACING LAYOUT DETAILS
SD2 NTS



8 DECORATIVE LIGHTING SECTION 120 MPH WIND (VULT)
SD2

03.03.2020	REVISED PER RACETRAC COMMENTS	NO.
02.13.2019	REVISED PER RACETRAC COMMENTS	2
02.11.2019	REVISED PER RACETRAC COMMENTS	3
01.05.2018	REVISED PER BARROW COUNTY & RACETRAC COMMENTS	1
	DATE	

W&A Engineering
Civil Engineering - Landscape Architecture
Surveying - Soil and Environmental Consulting
Traffic Engineering - Technical Engineering

THESE PLANS ARE ORIGINAL WORK. ANY REUSE OR REPRODUCTION WITHOUT THE WRITTEN PERMISSION OF W&A ENGINEERING IS PROHIBITED.

Racetrac
RACETRAC PETROLEUM, INC.
200 GALLERIA PARKWAY SE
SUITE 500 ATLANTA, GA 30339
(770) 431-7600

RACETRAC STANDARD DETAILS
RACETRAC 316@81
839 Loganville Highway
Bethlehem, Georgia
Barrow County

DRAWN-BY	AGRUNER
DATE	3/3/2020
SCALE	
DRAWING NAME:	RT Details 17293.dwg
SD2	
SHEET NO.	VERSION