



Know what's below.  
Call before you dig.

ALL VERTICAL BENDS ON WATER MAIN SHALL BE RESTRAINED WITH A MECHANICAL JOINT FITTING SUPPLIED WITH THE RETAINER GLANDS. ANY JOINTS 25 FEET OR LESS FROM EITHER SIDE OF VERTICAL BEND SHALL BE RESTRAINED WITH A RETAINER GLAND.

DIMENSIONS SHOWN ARE TO CENTERLINE OF PIPE OR FITTING.

THRUST BLOCKS SHALL BE PROVIDED AT ALL HORIZONTAL BENDS, TEES, AND FIRE HYDRANTS.

THE MINIMUM COVER ON WATER MAINS SHALL BE 3 FEET.

PIPE MATERIAL SHALL BE "ENDUPURE" PE 3408 - 200PSI.

GENERAL CONTRACTOR IS RESPONSIBLE TO COORDINATE THE IRRIGATION SYSTEM REQUIREMENTS BETWEEN THE IRRIGATION CONTRACTOR AND PLUMBING CONTRACTOR. IRRIGATION TAP, METERS, ETC. SHALL BE INCLUDED IN GENERAL CONTRACTOR'S BASE BID.

**POWER NOTES:**

CONTRACTOR IS RESPONSIBLE FOR INSTALLING ALL NECESSARY CONDUIT AND PULL WIRE ON-SITE UP TO PROPERTY.

CONTRACTOR SHALL COORDINATE THE INSTALLATION OF THE SERVICE LINES WITH THE POWER COMPANY.

CONTRACTOR SHALL PROVIDE TRANSFORMER PAD (UNLESS TRANSFORMER IS POLE MOUNTED) TO ALLOW FOR INSTALLATION OF TRANSFORMER BY POWER COMPANY.

**TELEPHONE NOTES:**

CONTRACTOR IS RESPONSIBLE FOR INSTALLING THE PVC CONDUIT INCLUDING TRENCHING BEDDING, PULL WIRE, AND BACKFILLING. CONTRACTOR SHALL BE RESPONSIBLE FOR CONTACTING THE TELEPHONE COMPANY TO SCHEDULE AND COORDINATE WORK PRIOR TO INSTALLING CONDUIT.

**SITE SPECIFIC NOTES:**

CONTRACTOR TO INCLUDE FOR ALL SECONDARY CONDUITS (CONDUIT ONLY) DEPICTED ON UTILITY PAGE IN BASE BID. INCLUDE FOR LENGTH UP POLE APPROX. 30FT. WIRE IS ASSUMED TO BE BY UTILITY DEPARTMENT.

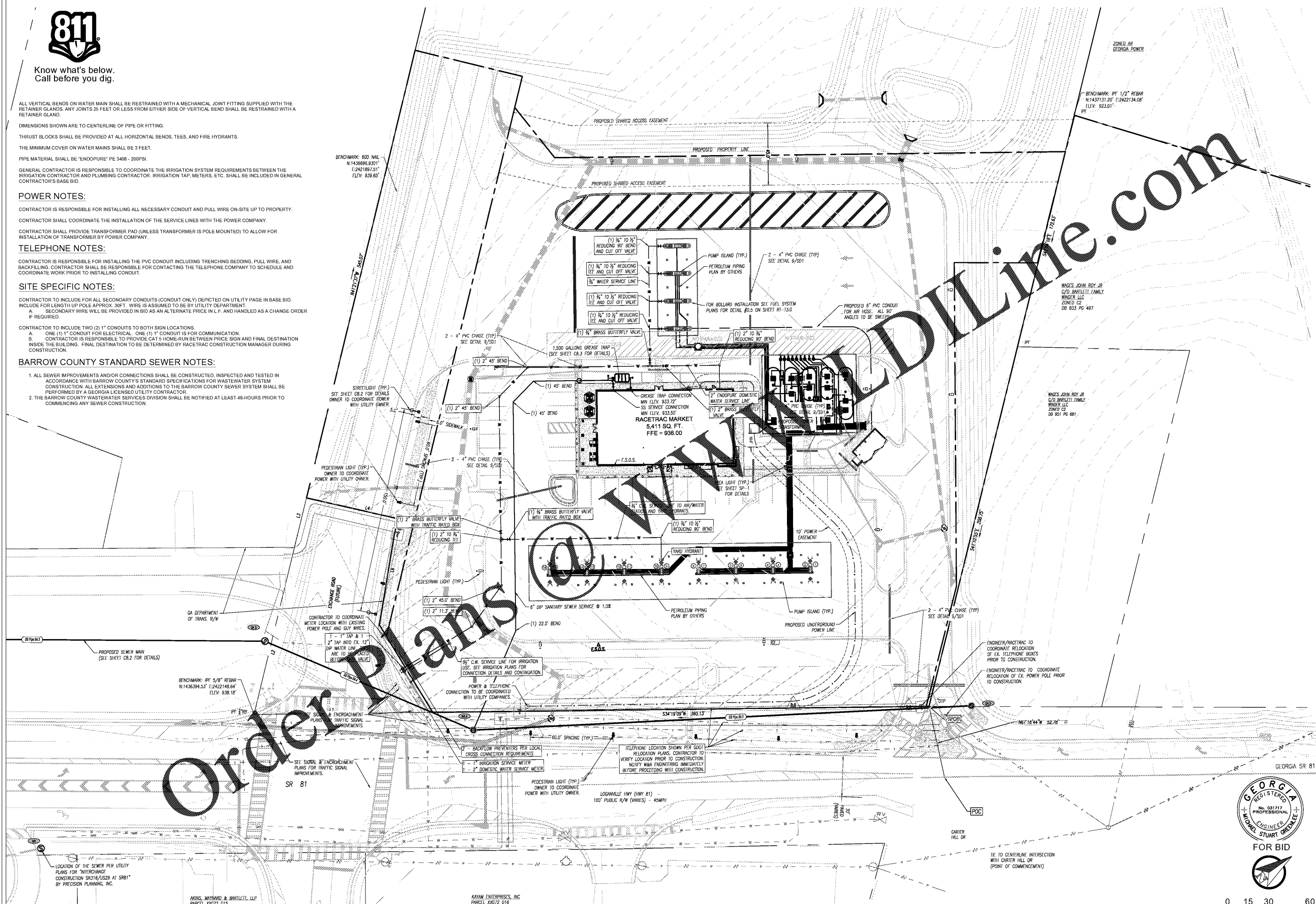
A. SECONDARY WIRE WILL BE PROVIDED IN BID AS AN ALTERNATE PRICE IN L.F. AND HANDLED AS A CHANGE ORDER IF REQUIRED.

CONTRACTOR TO INCLUDE TWO (2) 1" CONDUITS TO BOTH SIGN LOCATIONS.

A. ONE (1) 1" CONDUIT FOR ELECTRICAL. ONE (1) 1" CONDUIT IS FOR COMMUNICATION.  
B. CONTRACTOR IS RESPONSIBLE TO PROVIDE CAT 5 HOME-RUN BETWEEN PRICE SIGN AND FINAL DESTINATION INSIDE THE BUILDING. FINAL DESTINATION TO BE DETERMINED BY RACETRAC CONSTRUCTION MANAGER DURING CONSTRUCTION.

**BARROW COUNTY STANDARD SEWER NOTES:**

1. ALL SEWER IMPROVEMENTS AND/OR CONNECTIONS SHALL BE CONSTRUCTED, INSPECTED AND TESTED IN ACCORDANCE WITH BARROW COUNTY'S STANDARD SPECIFICATIONS FOR WASTEWATER SYSTEM CONSTRUCTION. ALL EXTENSIONS AND ADDITIONS TO THE BARROW COUNTY SEWER SYSTEM SHALL BE PERFORMED BY A GEORGIA LICENSED UTILITY CONTRACTOR.
2. THE BARROW COUNTY WASTEWATER SERVICES DIVISION SHALL BE NOTIFIED AT LEAST 48-HOURS PRIOR TO COMMENCING ANY SEWER CONSTRUCTION.



CONTACT RACETRAC PETROLEUM, INC. PROJECT MANAGER PRIOR TO ANY REVISIONS TO THE PLAN SUPPLIED BY RACETRAC PETROLEUM, INC.

03.03.2020	7	REVISED PER DEVELOPER CHANGES	NO	DATE
02.24.2019	6	REVISED PER DEVELOPER CHANGES		
10.07.2019	5	REVISED PER DEVELOPER CHANGES		
04.09.2019	4	REVISED PER RACETRAC COMMENTS		
10.05.2018	3	REVISED PER BARROW COUNTY & RACETRAC COMMENTS		
08.01.2018	2	REVISED PER BARROW COUNTY, GASVWC & RACETRAC COMMENTS		
05.17.2018	1	REVISED PER BARROW COUNTY, GASVWC & RACETRAC COMMENTS		

**W&A Engineering**  
 CIVIL ENGINEERING - LANDSCAPE ARCHITECTURE  
 DIRECTOR - SOU AND PROFESSIONAL JUDICIAL  
 TRAFFIC ENGINEERING - TECHNICAL SURVEYOR

**Racetrac**  
 RACETRAC PETROLEUM, INC.  
 200 GALLERIA PARKWAY SE  
 SUITE 900 ATLANTA, GA 30339  
 (770) 431-7600

**GEORGIA REGISTERED ENGINEER**  
 MICHAEL STUART BREWSTER  
 No. 031717  
 PROFESSIONAL ENGINEER  
 FOR BID

UTILITY PLAN	RACETRAC 316@81
DRAWN BY	AGRUNER
DATE	02.28.2018
SCALE	1" = 30'
DRAWING NAME	Const-17293.dwg
SHEET NO.	C8
VERSION	