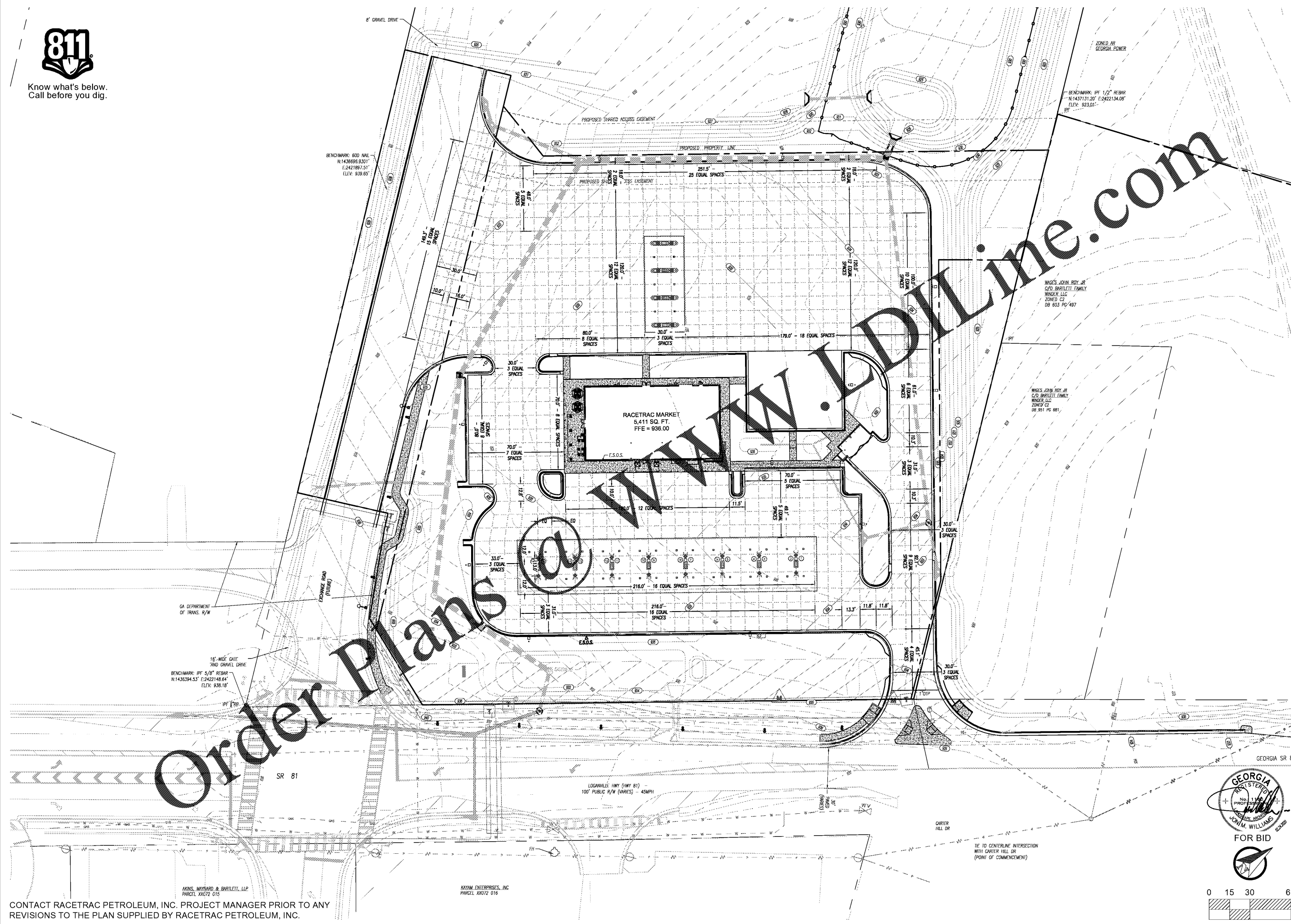




Know what's below.
Call before you dig.



Order Plans

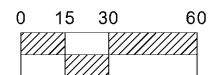
CONTACT RACETRAC PETROLEUM, INC. PROJECT MANAGER PRIOR TO ANY REVISIONS TO THE PLAN SUPPLIED BY RACETRAC PETROLEUM, INC.

AKINS, MAYNARD & BARTLETT, LLP
PARCEL XX072 015

KAYM ENTERPRISES, INC
PARCEL XX072 016



FOR BID



DATE	02.24.2020	4	REVISED PER DEVELOPER CHANGES
DATE	10.07.2019	3	REVISED PER DEVELOPER CHANGES
DATE	08.01.2018	2	REVISED PER BARROW COUNTY, GASWCC & RACETRAC COMMENTS
DATE	05.17.2018	1	REVISED PER BARROW COUNTY, GASWCC & RACETRAC COMMENTS
NO.			

 W&A Engineering <small>CIVIL ENGINEERING - LANDSCAPE ARCHITECTURE SURVEYING - SOIL AND ENVIRONMENTAL INVESTIGATION TRAFFIC ENGINEERING - ECONOMIC DEVELOPMENT</small>

 RaceTrac <small>RACETRAC PETROLEUM, INC. 200 GALLERIA PARKWAY SE SUITE 900 ATLANTA, GA 30339 (770) 431-7600</small>
--

JOINTING PLAN RACETRAC 316@81 839 Loganville Highway Bethlehem, Georgia Barrow County

DRAWN-BY DATE SCALE DRAWING NAME SHEET NO.	AGRUNER 02.28.2018 1" = 30' Conset-17293.dwg C6
--	--