



NPDES "STAND ALONE CONSTRUCTION" PERMIT NOTES

- 14 THE DESIGN PROFESSIONAL WHO PREPARED THE ES&PC PLAN IS TO INSPECT THE INSTALLATION OF THE INITIAL SEDIMENT STORAGE REQUIREMENTS AND PERIMETER CONTROL BMP'S WITHIN 7 DAYS AFTER INSTALLATION.
- 15 NON-EXEMPT ACTIVITIES SHALL NOT BE CONDUCTED WITHIN THE 25 OR 50-FOOT UNDISTURBED STREAM BUFFERS AS MEASURED FROM THE POINT OF THE WRISTED VEGETATION OR WITHIN 25-FEET OF THE COASTAL MARSHLAND BUFFER AS MEASURED FROM THE JURISDICTIONAL DETERMINATION LINE WITHOUT FIRST ACQUIRING THE NECESSARY VARIANCES AND PERMITS.
- 16 AMENDMENTS/REVISIONS TO THE ES&PC PLAN WHICH HAVE A SIGNIFICANT EFFECT ON BMP'S WITH A HYDRAULIC COMPONENT MUST BE CERTIFIED BY THE DESIGN PROFESSIONAL AND APPROVED BY ATHENS-CLARKE COUNTY DEPARTMENT OF TRANSPORTATION & PUBLIC WORKS.
- 17 WASTE MATERIALS SHALL NOT BE DISCHARGED TO WATERS OF THE STATE, EXCEPT AS AUTHORIZED BY A SECTION 404 PERMIT.
- 18 THE ESCAPE OF SEDIMENT FROM THE SITE SHALL BE PREVENTED BY THE INSTALLATION OF EROSION AND SEDIMENT CONTROL MEASURES AND PRACTICES PRIOR TO LAND DISTURBING ACTIVITIES.
- 19 EROSION CONTROL MEASURES WILL BE MAINTAINED AT ALL TIMES. IF FULL IMPLEMENTATION OF THE APPROVED PLAN DOES NOT PROVIDE FOR EFFECTIVE EROSION CONTROL, ADDITIONAL EROSION AND SEDIMENT CONTROL MEASURES SHALL BE IMPLEMENTED TO CONTROL OR TREAT THE SEDIMENT SOURCE.
- 20 ANY DISTURBED AREA LEFT EXPOSED FOR A PERIOD GREATER THAN 14 DAYS SHALL BE STABILIZED WITH MULCH OR TEMPORARY SEEDING.

EROSION AND SEDIMENT CONTROL MEASURES SHALL BE ESTABLISHED PRIOR TO ANY OTHER CONSTRUCTION ACTIVITIES ON SITE. ALL EROSION AND SEDIMENT CONTROL FACILITIES SHALL BE MAINTAINED UNTIL PERMANENT GROUND COVER IS ESTABLISHED.

STORMWATER MANAGEMENT FACILITIES SHALL BE INSTALLED IN ACCORDANCE WITH ALL LOCAL, STATE, AND OTHER APPROPRIATE ORDINANCES AND REGULATIONS.

WASHOUT OF A CONCRETE MIXER OR DRUM IS PROHIBITED.

KO N&M LET
DB 527 PG 172
ZONED C3

ES&PC PHASE 3 LIMITS OF DISTURBANCE

PHASE 3 DISTURBANCE INCLUDES ALL AREAS WHERE FINAL GRADING AND PERMANENT LANDSCAPING IS TO OCCUR. EXACT LOCATIONS ARE NOT SHOWN ON THIS PLAN DUE TO CLARITY AND LEGIBILITY.

THE TOTAL AREA GRABBED FOR PHASE III IS 13.04 ACRES.

THE TOTAL SEDIMENT STORAGE REQUIRED IS:
13.04 ACRES GRABBED X 67 CY = 874 CY

SEDIMENT STORAGE WILL BE PROVIDED FOR AS FOLLOWS:

POND	=	2199 CY
SILT FENCE (2.14 CY/LF X 1082 LF)	=	148 CY
TOTAL SEDIMENT STORAGE PROVIDED	=	2348 CY

NOTE: INCREASE SEDIMENT BASINS TO PROVIDE SEDIMENT STORAGE OF AT LEAST 134 CY PER ACRE. GRABBED PER APPENDIX I.

13.04 ACRES GRABBED X 134 CY = 1747 CY

LIMITS OF DISTURBANCE

LIMITS OF DISTURBANCE IS THE SAME AS AND INDICATED BY THE LIMITS OF CLEARING AND GRADING/CLEARING LIMITS SHOWN ON THE PLANS.

ENVIRONMENTAL BUFFERS NOTE

WHEN PRESENT, ALL ENVIRONMENTAL BUFFERS SHALL BE CLEARLY DELINEATED IN THE FIELD BEFORE CLEARING AND GRUBBING BEGINS.

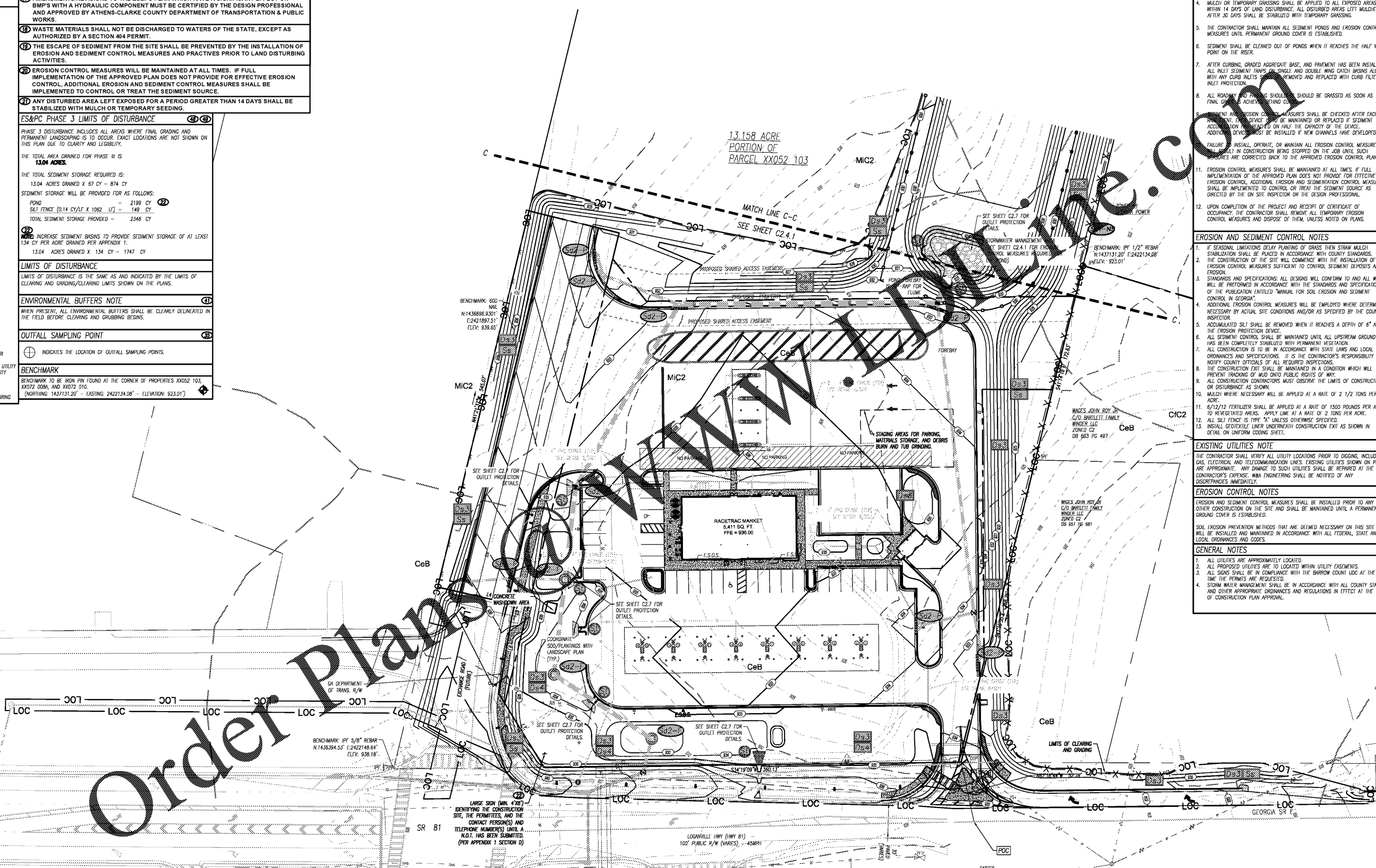
OUTFALL SAMPLING POINT

INDICATES THE LOCATION OF OUTFALL SAMPLING POINTS.

BENCHMARK

BENCHMARK TO BE IRON PIN FOUND AT THE CORNER OF PROPERTIES XX052 103, XX072 008A, AND XX072 010.
(NORTHING: 1437131.20' - EASTING: 2422134.08' - ELEVATION: 923.01')

- LEGEND**
- OB = OPEN BOOK
 - PL = PLAT BOOK
 - ZDL = ZONING DEMARCATION LINE
 - TP = TYPICAL
 - IX = EXISTING
 - PR = PROPOSED
 - TBA = TO BE ABANDONED
 - TBR = TO BE REMOVED
 - TBF = TO BE FILLED
 - U.L. = UTILITY EASEMENT
 - SSE = SANITARY SEWER EASEMENT
 - DE = DRAINAGE EASEMENT
 - C = COMPACT PARKING SPACE
 - OSSA = OPEN SOIL SURFACE AREA
 - BSL = BUILDING SETBACK LINE
 - PSL = PARKING SETBACK LINE
 - FTE = FINISHED FLOOR ELEVATION
 - SSM = SANITARY SEWER MANHOLE
 - UP = UTILITY POLE
 - PC = PROPERTY CORNER
 - PCF = PROPERTY CORNER FOUND
 - PCP = PROPERTY CORNER
 - IPF = IRON PIN FOUND
 - IPS = IRON PIN SET 1/2" REBAR
 - CMF = CONCRETE MONUMENT FOUND
 - OTF = OPEN TOP PIPE
 - CO = CLEAN OUT
 - SSM = SANITARY SEWER MANHOLE
 - DI = DUCTILE IRON PIPE
 - FH = FIRE HYDRANT
 - WM = WATER METER
 - WV = WATER VALVE
 - TP = TELEPHONE POLE
 - PP = POWER POLE
 - PTP = POWER TELEPHONE POLE
 - LP = LIGHTPOST
 - SG = TRAFFIC SIGNAL
 - UPED = UNDERGROUND TELEPHONE PEDESTAL
 - FD = FIBER OPTIC PEDESTAL
 - TRANS = TRANSFORMER
 - GI = GRATE INLET
 - HGI = HOODED GRADE INLET
 - JB = JUNCTION BOX
 - OCS = OUTLET CONTROL STRUCTURE
 - RCP = REINFORCED CONCRETE PIPE
 - CMP = CORRUGATED METAL PIPE
 - HDP = HIGH DENSITY POLYETHYLENE
 - IE = INVERT ELEVATION
 - LCB = LEFT WING CATCH BASIN
 - RCB = RIGHT WING CATCH BASIN
 - DCB = DOUBLE WING CATCH BASIN
 - FES = FLARED END SECTION
 - SOY WIRE =
 - SS - SANITARY SEWER
 - W - WATER
 - U - UNDERGROUND UTILITY
 - W - OVERHEAD UTILITY
 - T - TELECOMMUNICATION
 - GAS - GAS
 - LOC - LIMITS OF CLEARING



FINAL PHASE NOTES

- THE FOLLOWING EROSION CONTROL MEASURES SHALL BE IMPLEMENTED DURING THE FINAL EROSION CONTROL PHASE OF CONSTRUCTION.
- SEDIMENT SHALL NOT BE ALLOWED TO WASH INTO INLETS. IT SHALL BE REMOVED FROM THE SEDIMENT TRAPS AND DISPOSED OF OR STABILIZED SO THAT IT WILL NOT ENTER INTO THE INLETS AGAIN.
- CONTRACTOR SHALL MAINTAIN FULL COORDINATION WITH THE DESIGN PROFESSIONAL AND REGULATORY INSPECTOR AT ALL TIMES REGARDING PROJECT SEQUENCE.
- MULCH OR TEMPORARY GRASSING SHALL BE APPLIED TO ALL EXPOSED AREAS WITHIN 14 DAYS OF LAND DISTURBANCE. ALL DISTURBED AREAS LEFT MULCHED AFTER 30 DAYS SHALL BE STABILIZED WITH TEMPORARY GRASSING.
- THE CONTRACTOR SHALL MAINTAIN ALL SEDIMENT PONDS AND EROSION CONTROL MEASURES UNTIL PERMANENT GROUND COVER IS ESTABLISHED.
- SEDIMENT SHALL BE CLEANED OUT OF PONDS WHEN IT REACHES THE HALF WAY POINT ON THE ROSE.
- AFTER CURBING, GRADED AGGREGATE BASE, AND PAVEMENT HAS BEEN INSTALLED, ALL INLET SEDIMENT TRAPS ON SINGLE AND DOUBLE WING CATCH BASINS ALONG WITH ANY CURB INLETS SHALL BE REMOVED AND REPLACED WITH CURB FILTER INLET PROTECTION.
- ALL ROADWAY AND PAVING SHOULD BE GRASSED AS SOON AS FINAL GRASSING IS ACHIEVED BEHIND CURBS.
- EROSION AND SEDIMENT CONTROL MEASURES SHALL BE CHECKED AFTER EACH RAINFALL. THE DEVICE SHOULD BE MAINTAINED OR REPLACED IF SEDIMENT ACCUMULATES TO EXCEED THE CAPACITY OF THE DEVICE. ADDITIONAL DEVICES SHOULD BE INSTALLED IF NEW CHANNELS HAVE DEVELOPED. FAILURE TO INSTALL, OPERATE, OR MAINTAIN ALL EROSION CONTROL MEASURES WILL RESULT IN CONSTRUCTION BEING STOPPED ON THE JOB UNTIL SUCH MEASURES ARE CORRECTED BACK TO THE APPROVED EROSION CONTROL PLANS.
- EROSION CONTROL MEASURES SHALL BE MAINTAINED AT ALL TIMES. IF FULL IMPLEMENTATION OF THE APPROVED PLAN DOES NOT PROVIDE FOR EFFECTIVE EROSION CONTROL, ADDITIONAL EROSION AND SEDIMENTATION CONTROL MEASURES SHALL BE IMPLEMENTED TO CONTROL OR TREAT THE SEDIMENT SOURCE AS DICTATED BY THE ON SITE INSPECTOR OR THE DESIGN PROFESSIONAL.
- UPON COMPLETION OF THE PROJECT AND RECEIPT OF CERTIFICATE OF OCCUPANCY, THE CONTRACTOR SHALL REMOVE ALL TEMPORARY EROSION CONTROL MEASURES AND DISPOSE OF THEM, UNLESS NOTED ON PLANS.

EROSION AND SEDIMENT CONTROL NOTES

- IF SEASONAL LIMITATIONS DELAY PLANTING OF GRASS THEN STRAW MULCH STABILIZATION SHALL BE PLACED IN ACCORDANCE WITH COUNTY STANDARDS.
- THE CONSTRUCTION OF THE SITE WILL COMMENCE WITH THE INSTALLATION OF EROSION CONTROL MEASURES SUFFICIENT TO CONTROL SEDIMENT DEPOSITIONS AND EROSION.
- STANDARDS AND SPECIFICATIONS: ALL DESIGNS WILL CONFORM TO AND ALL WORK WILL BE PERFORMED IN ACCORDANCE WITH THE STANDARDS AND SPECIFICATIONS OF THE PUBLICATION ENTITLED "MANUAL FOR SOIL EROSION AND SEDIMENT CONTROL IN GEORGIA".
- ADDITIONAL EROSION CONTROL MEASURES WILL BE EMPLOYED WHERE DETERMINED NECESSARY BY ACTUAL SITE CONDITIONS AND/OR AS SPECIFIED BY THE COUNTY INSPECTOR.
- ACCUMULATED SILT SHALL BE REMOVED WHEN IT REACHES A DEPTH OF 6" AT THE EROSION PROTECTION DEVICE.
- ALL SEDIMENT CONTROL SHALL BE MAINTAINED UNTIL ALL UPSTREAM GROUND HAS BEEN COMPLETELY STABILIZED WITH PERMANENT VEGETATION.
- ALL CONSTRUCTION IS TO BE IN ACCORDANCE WITH STATE LAWS AND LOCAL ORDINANCES AND SPECIFICATIONS. IT IS THE CONTRACTOR'S RESPONSIBILITY TO NOTIFY COUNTY OFFICIALS OF ALL REQUIRED INSPECTIONS.
- THE CONSTRUCTION EXIT SHALL BE MAINTAINED IN A CONDITION WHICH WILL PREVENT TRACKING OF MUD DIRT PUBLIC ROADS OF ANY.
- ALL CONSTRUCTION CONTRACTORS MUST OBSERVE THE LIMITS OF CONSTRUCTION OR DISTURBANCE AS SHOWN.
- MULCH WHERE NECESSARY WILL BE APPLIED AT A RATE OF 2 1/2 TONS PER ACRE.
- 6/12/12 FERTILIZER SHALL BE APPLIED AT A RATE OF 1500 POUNDS PER ACRE TO REVEGETATED AREAS. APPLY LIME AT A RATE OF 2 TONS PER ACRE.
- ALL SILT FENCE IS TYPE "A" UNLESS OTHERWISE SPECIFIED.
- INSTALL GUTTER/LINE UNDERNEATH CONSTRUCTION EXIT AS SHOWN IN DETAIL ON UNIFORM COODING SHEET.

EXISTING UTILITIES NOTE

THE CONTRACTOR SHALL VERIFY ALL UTILITY LOCATIONS PRIOR TO DIGGING, INCLUDING GAS, ELECTRICAL AND TELECOMMUNICATION LINES. EXISTING UTILITIES SHOWN ON PLAN ARE APPROXIMATE. ANY DAMAGE TO SUCH UTILITIES SHALL BE REPAIRED AT THE CONTRACTOR'S EXPENSE. W&A ENGINEERING SHALL BE NOTIFIED OF ANY DISCREPANCIES IMMEDIATELY.

EROSION CONTROL NOTES

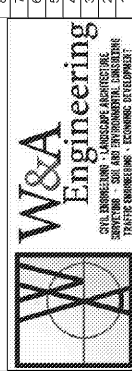
EROSION AND SEDIMENT CONTROL MEASURES SHALL BE INSTALLED PRIOR TO ANY OTHER CONSTRUCTION ON THE SITE AND SHALL BE MAINTAINED UNTIL A PERMANENT GROUND COVER IS ESTABLISHED.

SOIL EROSION PREVENTION METHODS THAT ARE DEEMED NECESSARY ON THIS SITE WILL BE INSTALLED AND MAINTAINED IN ACCORDANCE WITH ALL FEDERAL, STATE AND LOCAL ORDINANCES AND CODES.

GENERAL NOTES

- ALL UTILITIES ARE APPROXIMATELY LOCATED.
- ALL PROPOSED UTILITIES ARE TO BE LOCATED WITHIN UTILITY EASEMENTS.
- ALL SIGNS SHALL BE IN COMPLIANCE WITH THE BARROW COUNTY LOC AT THE TIME THE PERMITS ARE REQUESTED.
- STORM WATER MANAGEMENT SHALL BE IN ACCORDANCE WITH ALL COUNTY STATE AND OTHER APPROPRIATE ORDINANCES AND REGULATIONS IN EFFECT AT THE TIME OF CONSTRUCTION PLAN APPROVAL.

NO.	REVISION	DATE	DESCRIPTION
1	REVISED PER GSWCC COMMENTS	01.15.2020	
2	REVISED PER DEVELOPER CHANGES	12.12.2019	
3	REVISED PER GDOT & RACETRAC COMMENTS	10.07.2019	
4	REVISED PER GDOT & RACETRAC COMMENTS	01.14.2019	
5	REVISED PER GDOT & RACETRAC COMMENTS	12.03.2018	
6	REVISED PER BARROW COUNTY & RACETRAC COMMENTS	10.05.2018	
7	REVISED PER BARROW COUNTY, GASWCC & RACETRAC COMMENTS	08.01.2018	
8	REVISED PER BARROW COUNTY, GASWCC & RACETRAC COMMENTS	05.17.2018	



THESE PLANS ARE NOT TO BE REPRODUCED OR COPIED WITHOUT THE WRITTEN PERMISSION OF RACETRAC PETROLEUM, INC. IS PROHIBITED.



RACETRAC PETROLEUM, INC.
200 GALLERIA PARKWAY SE
SUITE 800 ATLANTA, GA 30339
(770) 431-7600

ES&PC PHASE III
RACETRAC 316 @ 81
839 Loganville Highway
Bethlehem, Georgia
Barrow County

CONTACT RACETRAC PETROLEUM, INC. PROJECT MANAGER PRIOR TO ANY REVISIONS TO THE PLAN SUPPLIED BY RACETRAC PETROLEUM, INC.

SEDIMENT AND EROSION CONTROL CHECKLIST ITEMS CORRESPOND TO 1

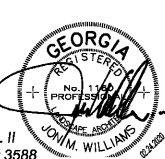
24 HR CONTACT:
RACETRAC PETROLEUM
200 GALLERIA PARKWAY SE
ATLANTA, GA 30339
ATTN: CHANCE DENNIS
770-431-7600

SHOULD 24 HOUR CONTACT CHANGE, NOTIFICATION MUST BE MADE TO BUILDING INSPECTOR IMMEDIATELY.

NRCS SOILS DATA:

Soil Types Taken From USDA Soil Survey, Barrow, Hall and Jackson Counties, Georgia

MAP SYMBOL	SOIL TYPE	SLOPES	ERODED	DEPTH	PERMEABILITY	K FACTOR
CeB	Coal Sandy Clay Loam	2-8%	>60"	0.6-0.2in./hrs.	0.20	
CeC2	Coal Sandy Clay Loam	6-10%	>60"	0.6-0.2in./hrs.	0.15	
LuE	Rion-Wateree Complex	10-25%	>60"	0.6-0.2in./hrs.	0.15	
MIC2	Madison Sandy Clay Loam	6-10%	Moderately Eroded	>60"	0.6-0.2in./hrs.	0.10



GSWCC LEVEL II
CERTIFICATION # 3588

FOR BID

DRAWN BY: AGRUNER
DATE: 02.28.2018
SCALE: 1" = 40'
DRAWING NAME: Consol-17293.dwg
SHEET NO: C2.4
VERSION