

**LEGEND**

- OB - OPEN BOOK
PB - PLAT BOOK
ZDL - ZONING DEMARCATION LINE
TYP - TYPICAL
EX - EXISTING
PR - PROPOSED
TBA - TO BE ABANDONED
TRP - TO BE REWORKED
TBF - TO BE FILLED
U.E. - UTILITY EASEMENT
SSE - SANITARY SEWER EASEMENT
DE - DRAINAGE EASEMENT
C - COMPACT PARKING SPACE
OSSA - OPEN SOIL SURFACE AREA
BSL - BUILDING SETBACK LINE
PSL - PARKING SETBACK LINE
FTE - FINISHED FLOOR ELEVATION
S - SANITARY SEWER MANHOLE
U - UTILITY POLE
PC - PROPERTY CORNER
PCF - PROPERTY CORNER FOUND
PR - PROPERTY CORNER
PF - IRON PIN FOUND
RPS - IRON PIN SET 1/2" REBAR
CMF - CONCRETE MONUMENT FOUND
OIP - OPEN TOP PIPE
CO - CLEAN OUT
SSM - SANITARY SEWER MANHOLE
DI - DUCTILE IRON PIPE
FI - FIRE HYDRANT
WM - WATER METER
WV - WATER VALVE
TP - TELEPHONE POLE
PP - POWER POLE
PTP - POWER TELEPHONE POLE
LP - LIGHTPOST
SIO - TRAFFIC SIGNAL
TPE - UNDERGROUND TELEPHONE PEDESTAL
FD - FIBER OPTIC PEDESTAL
TRNS - TRANSFORMER
DI - DRAIN INLET
GI - GRATE INLET
HI - HOODED GRADE INLET
JB - JUNCTION BOX
OCS - OUTLET CONTROL STRUCTURE
RCP - REINFORCED CONCRETE PIPE
CMP - CORRUGATED METAL PIPE
HDP - HIGH DENSITY POLYETHYLENE
E - INVERT ELEVATION
UNCB - LEFT WING CATCH BASIN
CNCB - RIGHT WING CATCH BASIN
DNCB - DOUBLE WING CATCH BASIN
FES - FLARED END SECTION
S - SANITARY SEWER
W - WATER
U - UNDERGROUND UTILITY
O - OVERHEAD UTILITY
T - TELECOMMUNICATION
GAS - GAS
LOC - LIMITS OF CLEARING

**NPDES "STAND ALONE CONSTRUCTION" PERMIT NOTES**

- THE DESIGN PROFESSIONAL WHO PREPARED THE ES&PC PLAN IS TO INSPECT THE INSTALLATION OF THE INITIAL SEDIMENT STORAGE REQUIREMENTS AND PERIMETER CONTROL BMP'S WITHIN 7 DAYS AFTER INSTALLATION.
NON-EXEMPT ACTIVITIES SHALL NOT BE CONDUCTED WITHIN THE 25 OR 50-FOOT UNDISTURBED STREAM BUFFERS AS MEASURED FROM THE POINT OF THE WRESTED VEGETATION OR WITHIN 25-FEET OF THE COASTAL MARSHLAND BUFFER AS MEASURED FROM THE JURISDICTIONAL DETERMINATION LINE WITHOUT FIRST ACQUIRING THE NECESSARY VARIANCES AND PERMITS.
AMENDMENTS/REVISIONS TO THE ES&PC PLAN WHICH HAVE A SIGNIFICANT EFFECT ON BMP'S WITH A HYDRAULIC COMPONENT MUST BE CERTIFIED BY THE DESIGN PROFESSIONAL AND APPROVED BY ATHENS-CLARKE COUNTY DEPARTMENT OF TRANSPORTATION & PUBLIC WORKS.
WASTE MATERIALS SHALL NOT BE DISCHARGED TO WATERS OF THE STATE, EXCEPT AS AUTHORIZED BY A SECTION 404 PERMIT.
THE ESCAPE OF SEDIMENT FROM THE SITE SHALL BE PREVENTED BY THE INSTALLATION OF EROSION AND SEDIMENT CONTROL MEASURES AND PRACTICES PRIOR TO LAND DISTURBING ACTIVITIES.
EROSION CONTROL MEASURES WILL BE MAINTAINED AT ALL TIMES. IF FULL IMPLEMENTATION OF THE APPROVED PLAN DOES NOT PROVIDE FOR EFFECTIVE EROSION CONTROL, ADDITIONAL EROSION AND SEDIMENT CONTROL MEASURES SHALL BE IMPLEMENTED TO CONTROL OR TREAT THE SEDIMENT SOURCE.
ANY DISTURBED AREA LEFT EXPOSED FOR A PERIOD GREATER THAN 14 DAYS SHALL BE STABILIZED WITH MULCH OR TEMPORARY SEEDING.
EROSION AND SEDIMENT CONTROL MEASURES SHALL BE ESTABLISHED PRIOR TO ANY OTHER CONSTRUCTION ACTIVITIES ON SITE. ALL EROSION AND SEDIMENT CONTROL FACILITIES SHALL BE MAINTAINED UNTIL PERMANENT GROUND COVER IS ESTABLISHED.
STORMWATER MANAGEMENT FACILITIES SHALL BE INSTALLED IN ACCORDANCE WITH ALL LOCAL, STATE, AND OTHER APPROPRIATE ORDINANCES AND REGULATIONS.
WASHOUT OF A CONCRETE MIXER OR DRUM IS PROHIBITED.

**LIMITS OF DISTURBANCE**

LIMITS OF DISTURBANCE IS THE SAME AS AND INDICATED BY THE LIMITS OF CLEARING AND GRADING/CLEARING LIMITS SHOWN ON THE PLANS.

**ENVIRONMENTAL BUFFERS NOTE**

WHEN PRESENT, ALL ENVIRONMENTAL BUFFERS SHALL BE CLEARLY DELINEATED IN THE FIELD BEFORE CLEARING AND GRUBBING BEGINS.

**OUTFALL SAMPLING POINT**

INDICATES THE LOCATION OF OUTFALL SAMPLING POINTS.

**BENCHMARK**

BENCHMARK: TO BE IRON PIN FOUND AT THE CORNER OF PROPERTIES XXX02 103, XXX02 008A, AND XXX02 010.
(NORTHING: 1437131.20' - EASTING: 2422134.08' - ELEVATION: 923.01')

**ES&PC PHASE 2 LIMITS OF DISTURBANCE**

PHASE 2 DISTURBANCE INCLUDES ALL AREAS DESIGNATED FOR SITE GRADING AS WELL AS AREAS NECESSARY TO MAINTAIN THE CONSTRUCTION ENTRANCE, PERIMETER SILT FENCING AND TEMPORARY SEDIMENT BASIN. GROW PAD CONSTRUCTION AND UTILITY INSTALLATION SHALL BEGIN IN ES&PC PHASE 2.

THE TOTAL AREA DRAINED FOR PHASE II IS 13.04 ACRES.

THE TOTAL SEDIMENT STORAGE REQUIRED IS: 13.04 ACRES DISTURBED X 87 CY = 874 CY

SEDIMENT STORAGE WILL BE PROVIDED FOR AS FOLLOWS: POND SILT FENCE (0.14 CY/LF X 1045 LF) = 146 CY

TOTAL SEDIMENT STORAGE PROVIDED = 2345 CY

NOTE: INCREASE SEDIMENT BASINS TO PROVIDE SEDIMENT STORAGE OF AT LEAST 134 CY PER ACRE DRAINED PER APPENDIX 1.

**EXISTING UTILITIES NOTE**

THE CONTRACTOR SHALL VERIFY ALL UTILITY LOCATIONS PRIOR TO DIGGING, INCLUDING GAS, ELECTRICAL, AND TELECOMMUNICATION LINES. EXISTING UTILITIES SHOWN ON PLAN ARE APPROXIMATE. ANY DAMAGE TO SUCH UTILITIES SHALL BE REPAIRED AT THE CONTRACTOR'S EXPENSE. W&A ENGINEERING SHALL BE NOTIFIED OF ANY DISCREPANCIES IMMEDIATELY.

**EROSION CONTROL NOTES**

EROSION AND SEDIMENT CONTROL MEASURES SHALL BE INSTALLED PRIOR TO ANY OTHER CONSTRUCTION ON THE SITE AND SHALL BE MAINTAINED UNTIL A PERMANENT GROUND COVER IS ESTABLISHED.

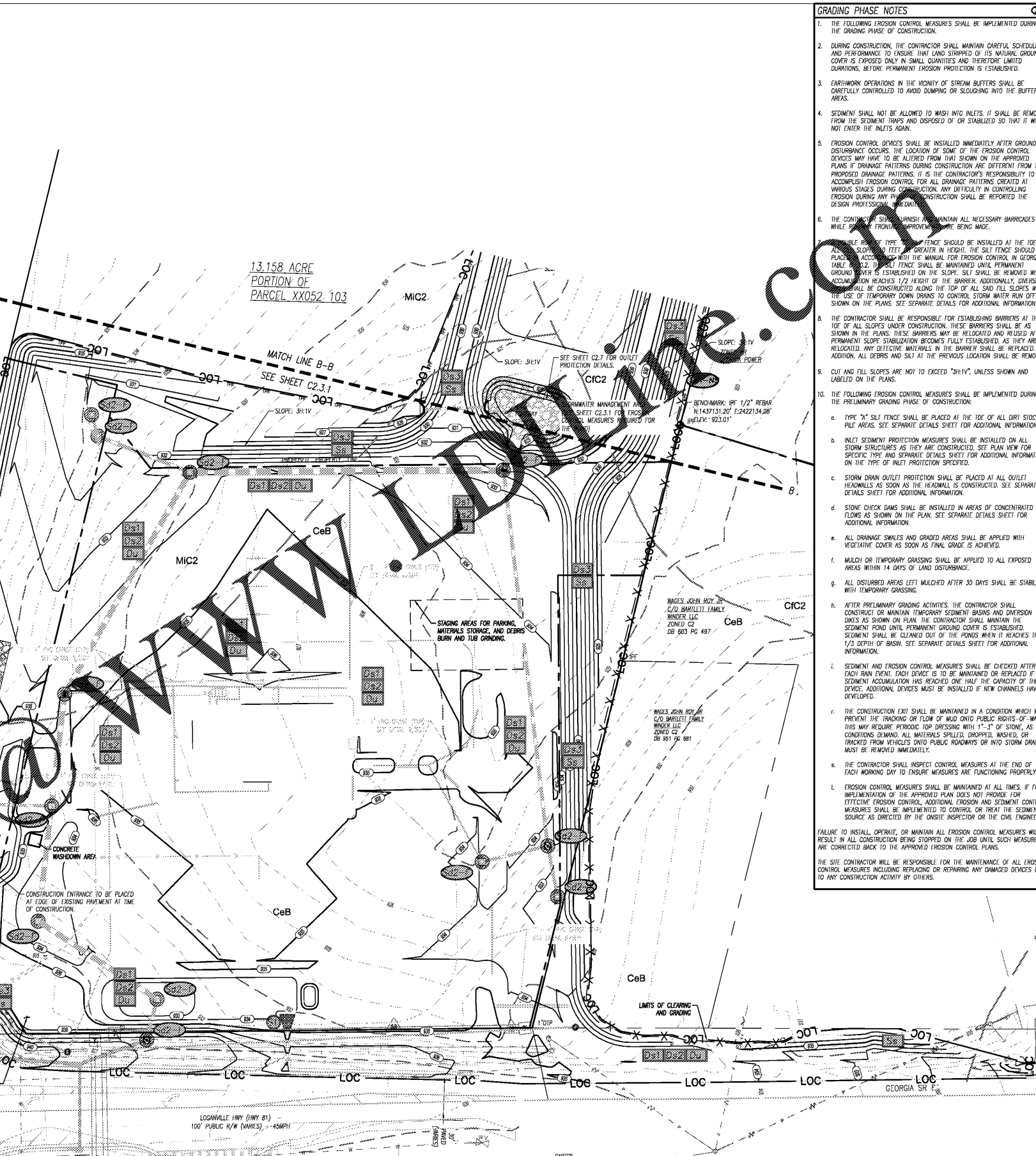
SOIL EROSION PREVENTION METHODS THAT ARE DEEMED NECESSARY ON THIS SITE WILL BE INSTALLED AND MAINTAINED IN ACCORDANCE WITH ALL FEDERAL, STATE AND LOCAL ORDINANCES AND CODES.

**GENERAL NOTES**

- ALL UTILITIES ARE APPROXIMATELY LOCATED.
ALL PROPOSED UTILITIES ARE TO BE LOCATED WITHIN UTILITY EASEMENTS.
ALL SIGNS SHALL BE IN COMPLIANCE WITH THE BARROW COUNTY LOC AT THE TIME THE PERMITS ARE REQUESTED.
STORM WATER MANAGEMENT SHALL BE IN ACCORDANCE WITH ALL COUNTY STATE AND OTHER APPROPRIATE ORDINANCES AND REGULATIONS IN EFFECT AT THE TIME OF CONSTRUCTION PLAN APPROVAL.

**EROSION AND SEDIMENT CONTROL NOTES**

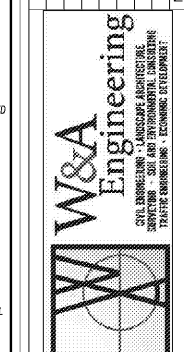
- IF SEASONAL LIMITATIONS DELAY PLANTING OF GRASS THEN STRAW MULCH STABILIZATION SHALL BE PLACED IN ACCORDANCE WITH COUNTY STANDARDS.
THE CONSTRUCTION OF THE SITE WILL COMMENCE WITH THE INSTALLATION OF EROSION CONTROL MEASURES SUFFICIENT TO CONTROL SEDIMENT DEPOSITS AND EROSION.
STANDARDS AND SPECIFICATIONS: ALL DESIGNS WILL CONFORM TO AND ALL WORK WILL BE PERFORMED IN ACCORDANCE WITH THE STANDARDS AND SPECIFICATIONS OF THE PUBLICATION ENTITLED "MANUAL FOR SOIL EROSION AND SEDIMENT CONTROL IN GEORGIA".
ADDITIONAL EROSION CONTROL MEASURES WILL BE EMPLOYED WHERE DETERMINED NECESSARY BY ACTUAL SITE CONDITIONS AND/OR AS SPECIFIED BY THE COUNTY INSPECTOR.
ACCUMULATED SILT SHALL BE REMOVED WHEN IT REACHES A DEPTH OF 6" AT THE EROSION PROTECTION DEVICE.
ALL SEDIMENT CONTROL SHALL BE MAINTAINED UNTIL ALL UPSTREAM GROUND HAS BEEN COMPLETELY STABILIZED WITH PERMANENT VEGETATION.
ALL CONSTRUCTION IS TO BE IN ACCORDANCE WITH STATE LAWS AND LOCAL ORDINANCES AND SPECIFICATIONS. IT IS THE CONTRACTOR'S RESPONSIBILITY TO NOTIFY COUNTY OFFICIALS OF ALL REQUIRED INSPECTIONS.
THE CONSTRUCTION EXIT SHALL BE MAINTAINED IN A CONDITION WHICH WILL PREVENT TRACKING OF MUD ONTO PUBLIC RIGHTS OF WAY.
ALL CONSTRUCTION CONTRACTORS MUST OBSERVE THE LIMITS OF CONSTRUCTION OR DISTURBANCE AS SHOWN.
MULCH WHERE NECESSARY WILL BE APPLIED AT A RATE OF 2 1/2 TONS PER ACRE.
6/12/12 FERTILIZER SHALL BE APPLIED AT A RATE OF 1500 POUNDS PER ACRE TO REVEGETATED AREAS. APPLY LIME AT A RATE OF 2 TONS PER ACRE.
ALL SILT FENCE IS TYPE "NS" UNLESS OTHERWISE SPECIFIED.
INSTALL GEOTEXTILE LINER UNDERNEATH CONSTRUCTION EXIT AS SHOWN IN DETAIL OR UNIFORM CODING SHEET.



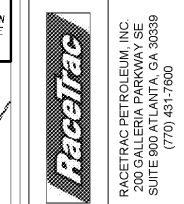
**GRADING PHASE NOTES**

- THE FOLLOWING EROSION CONTROL MEASURES SHALL BE IMPLEMENTED DURING THE GRADING PHASE OF CONSTRUCTION.
DURING CONSTRUCTION, THE CONTRACTOR SHALL MAINTAIN CAREFUL SCHEDULING AND PERFORMANCE TO ENSURE THAT LAND SURFACES OF ITS NATURAL GROUND COVER IS EXPOSED ONLY IN SMALL QUANTITIES AND THEREFORE LIMITED DURATIONS, BEFORE PERMANENT EROSION PROTECTION IS ESTABLISHED.
EARTHWORK OPERATIONS IN THE VICINITY OF STREAM BUFFERS SHALL BE CAREFULLY CONTROLLED TO AVOID DUMPING OR SLOUGHING INTO THE BUFFER AREAS.
SEDIMENT SHALL NOT BE ALLOWED TO WASH INTO INLETS. IT SHALL BE REMOVED FROM THE SEDIMENT TRAPS AND DISPOSED OF OR STABILIZED SO THAT IT WILL NOT ENTER THE INLETS AGAIN.
EROSION CONTROL DEVICES SHALL BE INSTALLED IMMEDIATELY AFTER GROUND DISTURBANCE OCCURS. THE LOCATION OF SOME OF THE EROSION CONTROL DEVICES MAY HAVE TO BE ALTERED FROM THAT SHOWN ON THE APPROVED PLANS IF DRAINAGE PATTERNS DURING CONSTRUCTION ARE DIFFERENT FROM THE PROPOSED DRAINAGE PATTERNS. IT IS THE CONTRACTOR'S RESPONSIBILITY TO ACCOMPLISH EROSION CONTROL FOR ALL DRAINAGE PATTERNS CREATED AT VARIOUS STAGES DURING CONSTRUCTION. ANY DIFFICULTY IN CONTROLLING EROSION DURING ANY PHASE OF CONSTRUCTION SHALL BE REPORTED THE DESIGN PROFESSIONAL IMMEDIATELY FOR ADDITIONAL INFORMATION.
THE CONTRACTOR SHALL MAINTAIN ALL NECESSARY BARRICADES WHILE WORK IS IN PROGRESS FROM IMPROVEMENTS BEING MADE.
SEDIMENT FENCE TYPE: SILT FENCE SHOULD BE INSTALLED AT THE TOE OF ALL SLOPES 3:1 OR GREATER IN HEIGHT. THE SILT FENCE SHOULD BE PLACED WITH THE MANUAL FOR EROSION CONTROL IN GEORGIA, TABLE 2.2.2. SILT FENCE SHALL BE MAINTAINED UNTIL PERMANENT GROUND COVER IS ESTABLISHED ON THE SLOPE. SILT SHALL BE REMOVED WHEN ACCUMULATION REACHES 1/2 HEIGHT OF THE BARRIER. ADDITIONALLY, DRAINAGE PATTERNS SHALL BE MAINTAINED ALONG THE TOP OF ALL SLOPE TELLS SLOPES WITH THE USE OF TEMPORARY DOWN DRAINS TO CONTROL STORM WATER RUN OFF AS SHOWN ON THE PLANS. SEE SEPARATE DETAILS FOR ADDITIONAL INFORMATION.
THE CONTRACTOR SHALL BE RESPONSIBLE FOR ESTABLISHING BARRIERS AT THE TOE OF ALL SLOPES UNDER CONSTRUCTION. THESE BARRIERS SHALL BE AS SHOWN IN THE PLANS. THESE BARRIERS MAY BE RELOCATED AND REUSED AFTER PERMANENT SLOPE STABILIZATION BECOMES FULLY ESTABLISHED, AS THEY ARE RELOCATED, ANY DEFECTIVE MATERIALS IN THE BARRIER SHALL BE REPLACED. IN ADDITION, ALL DEBRIS AND SILT AT THE PREVIOUS LOCATION SHALL BE REMOVED.
CUT AND FILL SLOPES ARE NOT TO EXCEED "3H:1V", UNLESS SHOWN AND LABELED ON THE PLANS.
THE FOLLOWING EROSION CONTROL MEASURES SHALL BE IMPLEMENTED DURING THE PRELIMINARY GRADING PHASE OF CONSTRUCTION:
TYPE "A" SILT FENCE SHALL BE PLACED AT THE TOE OF ALL DIRT STOCK PILE AREAS. SEE SEPARATE DETAILS SHEET FOR ADDITIONAL INFORMATION.
INLET SEDIMENT PROTECTION MEASURES SHALL BE INSTALLED ON ALL STORM STRUCTURES AS THEY ARE CONSTRUCTED. SEE PLAN NEW FOR SPECIFIC TYPE AND SEPARATE DETAILS SHEET FOR ADDITIONAL INFORMATION ON THE TYPE OF INLET PROTECTION SPECIFIED.
STORM DRAIN OUTLET PROTECTION SHALL BE PLACED AT ALL OUTLET HEADWALLS AS SOON AS THE HEADWALL IS CONSTRUCTED. SEE SEPARATE DETAILS SHEET FOR ADDITIONAL INFORMATION.
STONE CHECK DAMS SHALL BE INSTALLED IN AREAS OF CONCENTRATED FLOWS SHOWN ON THE PLAN. SEE SEPARATE DETAILS SHEET FOR ADDITIONAL INFORMATION.
ALL DRAINAGE SWALES AND GRADED AREAS SHALL BE APPLIED WITH VEGETATIVE COVER AS SOON AS FINAL GRADE IS ACHIEVED.
MULCH OR TEMPORARY GRASSING SHALL BE APPLIED TO ALL EXPOSED AREAS WITHIN 14 DAYS OF LAND DISTURBANCE.
ALL DISTURBED AREAS LEFT MULCHED AFTER 30 DAYS SHALL BE STABILIZED WITH TEMPORARY GRASSING.
AFTER PRELIMINARY GRADING ACTIVITIES, THE CONTRACTOR SHALL CONSTRUCT OR MAINTAIN TEMPORARY SEDIMENT BASINS AND DIVERSION DICES AS SHOWN ON PLAN. THE CONTRACTOR SHALL MAINTAIN THE SEDIMENT POND UNTIL PERMANENT GROUND COVER IS ESTABLISHED. SEDIMENT SHALL BE CLEANED OUT OF THE POND WHEN IT REACHES THE 1/2 DEPTH OF BASIN. SEE SEPARATE DETAILS SHEET FOR ADDITIONAL INFORMATION.
SEDIMENT AND EROSION CONTROL MEASURES SHALL BE CHECKED AFTER EACH RAIN EVENT. EACH DEVICE IS TO BE MAINTAINED OR REPLACED IF SEDIMENT ACCUMULATION HAS REACHED ONE HALF THE CAPACITY OF THE DEVICE. ADDITIONAL DEVICES MUST BE INSTALLED IF NEW CHANNELS HAVE DEVELOPED.
THE CONSTRUCTION EXIT SHALL BE MAINTAINED IN A CONDITION WHICH WILL PREVENT THE TRACKING OR FLOW OF MUD ONTO PUBLIC RIGHTS OF WAY. THIS MAY REQUIRE PERIODIC TOP DRESSING WITH 1" - 1 1/2" OF STONE. CONDITIONS DEMAND ALL MATERIALS SPILLED, DROPPED, WASHED, OR TRACKED FROM VEHICLES ONTO PUBLIC ROADWAYS OR INTO STORM DRAINS MUST BE REMOVED IMMEDIATELY.
THE CONTRACTOR SHALL INSPECT CONTROL MEASURES AT THE END OF EACH WORKING DAY TO ENSURE MEASURES ARE FUNCTIONING PROPERLY.
EROSION CONTROL MEASURES SHALL BE MAINTAINED AT ALL TIMES. IF FULL IMPLEMENTATION OF THE APPROVED PLAN DOES NOT PROVIDE FOR EFFECTIVE EROSION CONTROL, ADDITIONAL EROSION AND SEDIMENT CONTROL MEASURES SHALL BE IMPLEMENTED TO CONTROL OR TREAT THE SEDIMENT SOURCE AS DIRECTED BY THE ONSITE INSPECTOR OR THE CIVIL ENGINEER.
FAILURE TO INSTALL, OPERATE, OR MAINTAIN ALL EROSION CONTROL MEASURES WILL RESULT IN ALL CONSTRUCTION BEING STOPPED ON THE JOB UNTIL SUCH MEASURES ARE CORRECTED BACK TO THE APPROVED EROSION CONTROL PLANS.
THE SITE CONTRACTOR WILL BE RESPONSIBLE FOR THE MAINTENANCE OF ALL EROSION CONTROL MEASURES INCLUDING REPLACING OR REPAIRING ANY DAMAGED DEVICES DUE TO ANY CONSTRUCTION ACTIVITY BY OTHERS.

Table with columns for date and revision number. Includes dates from 02.13.2020 to 08.01.2018 and revision numbers 1 through 9.



THESE PLANS ARE LEGAL INSTRUMENTS. ANY USE OF SAME WITHOUT THE EXPRESSED WRITTEN PERMISSION OF RACETRAC PETROLEUM, INC. IS PROHIBITED.



RACETRAC PETROLEUM, INC. 200 GALLERIA PARKWAY SE SUITE 800 ATLANTA, GA 30339 (770) 431-7600

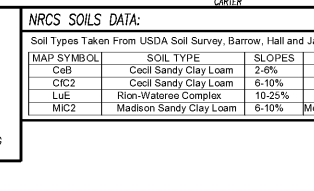
Table with columns for drawing and sheet information. Includes drawing name 'C2.3', sheet number 'C2.3', and version 'VERSION'.

CONTACT RACETRAC PETROLEUM, INC. PROJECT MANAGER PRIOR TO ANY REVISIONS TO THE PLAN SUPPLIED BY RACETRAC PETROLEUM, INC.

SEDIMENT AND EROSION CONTROL CHECKLIST ITEMS CORRESPOND TO

24 HR CONTACT: RACETRAC PETROLEUM 200 GALLERIA PARKWAY SE ATLANTA, GA 30339 ATTN: CHANCE DENNIS 770-431-7600

NRCS SOILS DATA table with columns: MAP SYMBOL, SOIL TYPE, SLOPES, ERODED, DEPTH, PERMEABILITY, K FACTOR. Lists soil types like Cecil Sandy Clay Loam and Madison Sandy Clay Loam.



GSWCC LEVEL II CERTIFICATION # 3588 FOR BID