



**LEGEND**

DB = DRED BOOK  
 PD = PLAT BOOK  
 ZDL = ZONING DEMARCATION LINE  
 TP = TYPICAL  
 EX = EXISTING  
 PR = PROPOSED  
 BA = TO BE ABANDONED  
 BR = TO BE REWORKED  
 BF = TO BE FILLED  
 U.L. = UTILITY EASEMENT  
 SSE = SANITARY SEWER EASEMENT  
 DE = DRAINAGE EASEMENT  
 C = COMPACT PARKING SPACE  
 OSA = OPEN SOIL SURFACE AREA  
 SBL = BUILDING SETBACK LINE  
 PSL = PARKING SETBACK LINE  
 FFL = FINISHED FLOOR ELEVATION  
 SSM = SANITARY SEWER MANHOLE  
 U.P. = UTILITY POLE  
 PC = PROPERTY CORNER  
 PCF = PROPERTY CORNER FOUND  
 PR = PROPERTY CORNER  
 PF = IRON PIN FOUND  
 FPS = IRON PIN SET  
 CMF = CONCRETE MONUMENT FOUND  
 OIP = OPEN TOP PIPE  
 CO = CLEAN OUT  
 SSM = SANITARY SEWER MANHOLE  
 DIP = DIURON IRON PIPE  
 FI = FIRE HYDRANT  
 WM = WATER METER  
 WV = WATER VALVE  
 TP = TELEPHONE POLE  
 PP = POWER POLE  
 SLP = SANITARY LIGHTING POLE  
 LP = LIGHTPOST  
 SIG = TRAFFIC SIGNAL  
 UPED = UNDERGROUND TELEPHONE PEDESTAL  
 FD = FIBER OPTIC PEDESTAL  
 TRNS = TRANSFORMER  
 TI = DROP INLET  
 GI = GRATE INLET  
 HI = HOODED GRATE INLET  
 JB = JUNCTION BOX  
 OCS = OUTLET CONTROL STRUCTURE  
 RCP = REINFORCED CONCRETE PIPE  
 COP = CORRUGATED METAL PIPE  
 HDPE = HIGH DENSITY POLYETHYLENE  
 E = INVERT ELEVATION  
 UICB = LEFT WING CATCH BASIN  
 UICWB = RIGHT WING CATCH BASIN  
 UICWB = DOUBLE WING CATCH BASIN  
 FTS = FLARED END CATCH BASIN  
 S/W = SANITARY SEWER  
 W = WATER  
 P = UNDERGROUND UTILITY  
 W = OVERHEAD UTILITY  
 T = UNDERGROUND TELECOMMUNICATION  
 GAS = GAS  
 LOC = LIMITS OF CLEARING

**NPDES "STAND ALONE CONSTRUCTION" PERMIT NOTES**

1. THE DESIGN PROFESSIONAL WHO PREPARED THE ES&PC PLAN IS TO INSPECT THE INSTALLATION OF THE INITIAL SEDIMENT STORAGE REQUIREMENTS AND PERIMETER CONTROL BMP'S WITHIN 7 DAYS AFTER INSTALLATION.

2. NON-EXEMPT ACTIVITIES SHALL NOT BE CONDUCTED WITHIN THE 25 OR 50-FOOT UNDISTURBED STREAM BUFFERS AS MEASURED FROM THE POINT OF THE WRISTED VEGETATION OR WITHIN 25-FEET OF THE COASTAL MARSHLAND BUFFER AS MEASURED FROM THE JURISDICTIONAL DETERMINATION LINE WITHOUT FIRST ACQUIRING THE NECESSARY VARIANCES AND PERMITS.

3. AMENDMENTS/REVISIONS TO THE ES&PC PLAN WHICH HAVE A SIGNIFICANT EFFECT ON BMP'S WITH A HYDRAULIC COMPONENT MUST BE CERTIFIED BY THE DESIGN PROFESSIONAL AND APPROVED BY ATHENS-CLARKE COUNTY DEPARTMENT OF TRANSPORTATION & PUBLIC WORKS.

4. WASTE MATERIALS SHALL NOT BE DISCHARGED TO WATERS OF THE STATE, EXCEPT AS AUTHORIZED BY A SECTION 404 PERMIT.

5. THE ESCAPE OF SEDIMENT FROM THE SITE SHALL BE PREVENTED BY THE INSTALLATION OF EROSION AND SEDIMENT CONTROL MEASURES AND PRACTICES PRIOR TO LAND DISTURBING ACTIVITIES.

6. EROSION CONTROL MEASURES WILL BE MAINTAINED AT ALL TIMES. IF FULL IMPLEMENTATION OF THE APPROVED PLAN DOES NOT PROVIDE FOR EFFECTIVE EROSION CONTROL, ADDITIONAL EROSION AND SEDIMENT CONTROL MEASURES SHALL BE IMPLEMENTED TO CONTROL OR TREAT THE SEDIMENT SOURCE.

7. ANY DISTURBED AREA LEFT EXPOSED FOR A PERIOD GREATER THAN 14 DAYS SHALL BE STABILIZED WITH MULCH OR TEMPORARY SEEDING.

8. EROSION AND SEDIMENT CONTROL MEASURES SHALL BE ESTABLISHED PRIOR TO ANY OTHER CONSTRUCTION ACTIVITIES ON SITE. ALL EROSION AND SEDIMENT CONTROL FACILITIES SHALL BE MAINTAINED UNTIL PERMANENT GROUND COVER IS ESTABLISHED.

9. STORMWATER MANAGEMENT FACILITIES SHALL BE INSTALLED IN ACCORDANCE WITH ALL LOCAL, STATE, AND OTHER APPROPRIATE ORDINANCES AND REGULATIONS.

10. WASHOUT OF A CONCRETE MIXER OR DRUM IS PROHIBITED.

**LIMITS OF DISTURBANCE**

LIMITS OF DISTURBANCE IS THE SAME AS INDICATED BY THE LIMITS OF CLEARING AND GRADING/CLEARING LIMITS SHOWN ON THE PLANS.

**ES&PC PHASE 1 LIMITS OF DISTURBANCE**

PHASE 1 DISTURBANCE INCLUDES ONLY THOSE AREAS NECESSARY TO INSTALL THE CONSTRUCTION ENTRANCE, PERIMETER SILT FENCING, TREE PROTECTION FENCING, AND THE SEDIMENT BASINS.

THE TOTAL AREA DRAINED FOR PHASE 1 IS 13.04 ACRES.

THE TOTAL SEDIMENT STORAGE REQUIRED IS:  
 13.04 ACRES DISTURBED X 87 CY = 874 CY

SEDIMENT STORAGE WILL BE PROVIDED FOR AS FOLLOWS:

POND = 2199 CY  
 SILT FENCE (0.14 CY/LF X 1045 LF) = 146 CY

TOTAL SEDIMENT STORAGE PROVIDED = 2345 CY

**ENVIRONMENTAL BUFFERS NOTE**

WHEN PRESENT, ALL ENVIRONMENTAL BUFFERS SHALL BE CLEARLY DELINEATED IN THE FIELD BEFORE CLEARING AND GRUBBING BEGINS.

**OUTFALL SAMPLING POINT**

⊕ INDICATES THE LOCATION OF OUTFALL SAMPLING POINTS.

**EROSION AND SEDIMENT CONTROL NOTES**

1. SEASONAL LIMITATIONS DELAY PLANTING OF GRASS THEN STRAW MULCH STABILIZATION SHALL BE PLACED IN ACCORDANCE WITH COUNTY STANDARDS.

2. THE CONSTRUCTION OF THE SITE WILL COMMENCE WITH THE INSTALLATION OF EROSION CONTROL MEASURES SUFFICIENT TO CONTROL SEDIMENT DEPOSITS AND EROSION.

3. STANDARDS AND SPECIFICATIONS: ALL DESIGNS WILL CONFORM TO AND ALL WORK WILL BE PERFORMED IN ACCORDANCE WITH THE STANDARDS AND SPECIFICATIONS OF THE PUBLICATION ENTITLED "MANUAL FOR SOIL EROSION AND SEDIMENT CONTROL IN GEORGIA".

4. ADDITIONAL EROSION CONTROL MEASURES WILL BE EMPLOYED WHERE DETERMINED NECESSARY BY ACTUAL SITE CONDITIONS AND/OR AS SPECIFIED BY THE COUNTY INSPECTOR.

5. ACCUMULATED SILT SHALL BE REMOVED WHEN IT REACHES A DEPTH OF 6" AT THE EROSION PROTECTION DEVICE.

6. ALL SEDIMENT CONTROL SHALL BE MAINTAINED UNTIL ALL UPSTREAM GROUND HAS BEEN COMPLETELY STABILIZED WITH PERMANENT VEGETATION.

7. ALL CONSTRUCTION IS TO BE IN ACCORDANCE WITH STATE LAWS AND LOCAL ORDINANCES AND SPECIFICATIONS. IT IS THE CONTRACTOR'S RESPONSIBILITY TO NOTIFY COUNTY OFFICIALS OF ALL REQUIRED INSPECTIONS.

8. THE CONSTRUCTION EXIT SHALL BE MAINTAINED IN A CONDITION WHICH WILL PREVENT TRACKING OF MUD ONTO PUBLIC RIGHTS OF WAY.

9. ALL CONSTRUCTION CONTRACTORS MUST OBSERVE THE LIMITS OF CONSTRUCTION OR DISTURBANCE AS SHOWN.

10. MULCH WHERE NECESSARY WILL BE APPLIED AT A RATE OF 2 1/2 TONS PER ACRE.

11. 6/12/12 FERTILIZER SHALL BE APPLIED AT A RATE OF 1500 POUNDS PER ACRE TO REVEGETATED AREAS. APPLY LIME AT A RATE OF 2 TONS PER ACRE.

12. ALL SILT FENCE IS TYPE "A" UNLESS OTHERWISE SPECIFIED.

13. INSTALL GEOTEXTILE LINER UNDERNEATH CONSTRUCTION EXIT AS SHOWN IN DETAIL ON UNIFORM CODING SHEET.

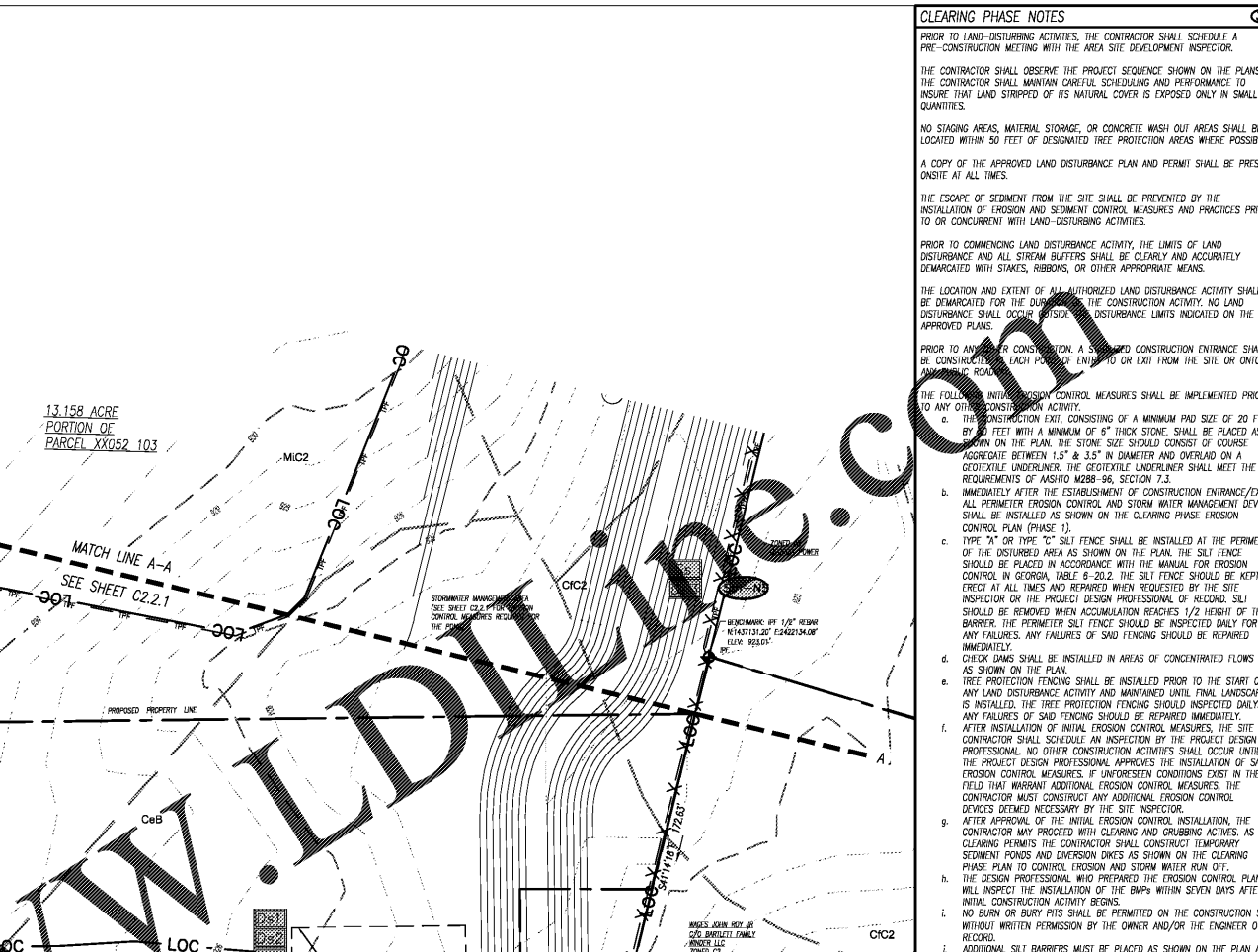
**EROSION CONTROL NOTES**

EROSION AND SEDIMENT CONTROL MEASURES SHALL BE INSTALLED PRIOR TO ANY OTHER CONSTRUCTION ON THE SITE AND SHALL BE MAINTAINED UNTIL A PERMANENT GROUND COVER IS ESTABLISHED.

SOIL EROSION PREVENTION METHODS THAT ARE DEEMED NECESSARY ON THIS SITE WILL BE INSTALLED AND MAINTAINED IN ACCORDANCE WITH ALL FEDERAL, STATE AND LOCAL ORDINANCES AND CODES.

**GENERAL NOTES**

1. ALL UTILITIES ARE APPROXIMATELY LOCATED.  
 2. ALL PROPOSED UTILITIES ARE TO BE LOCATED WITHIN UTILITY EASEMENTS.  
 3. ALL SIGNS SHALL BE IN COMPLIANCE WITH THE BARROW COUNTY LOC AT THE TIME THE PERMITS ARE REQUESTED.  
 4. STORM WATER MANAGEMENT SHALL BE IN ACCORDANCE WITH ALL COUNTY STATE AND OTHER APPROPRIATE ORDINANCES AND REGULATIONS IN EFFECT AT THE TIME OF CONSTRUCTION PLAN APPROVAL.



**CLEARING PHASE NOTES**

PRIOR TO LAND-DISTURBING ACTIVITIES, THE CONTRACTOR SHALL SCHEDULE A PRE-CONSTRUCTION MEETING WITH THE AREA SITE DEVELOPMENT INSPECTOR.

THE CONTRACTOR SHALL OBSERVE THE PROJECT SEQUENCE SHOWN ON THE PLANS. THE CONTRACTOR SHALL MAINTAIN ORIGINAL SLOPES AND ANTI-CORROSION MARKINGS TO INSURE THAT LAND STRIPPED OF ITS NATURAL COVER IS EXPOSED ONLY IN SMALL QUANTITIES.

NO STAGING AREAS, MATERIAL STORAGE, OR CONCRETE WASH OUT AREAS SHALL BE LOCATED WITHIN 50 FEET OF DESIGNATED TREE PROTECTION AREAS WHERE POSSIBLE.

A COPY OF THE APPROVED LAND DISTURBANCE PLAN AND PERMIT SHALL BE PRESENT ON-SITE AT ALL TIMES.

THE ESCAPE OF SEDIMENT FROM THE SITE SHALL BE PREVENTED BY THE INSTALLATION OF EROSION AND SEDIMENT CONTROL MEASURES AND PRACTICES PRIOR TO OR CONCURRENT WITH LAND-DISTURBING ACTIVITIES.

PRIOR TO COMMENCING LAND DISTURBANCE ACTIVITY, THE LIMITS OF LAND DISTURBANCE AND ALL STREAM BUFFERS SHALL BE CLEARLY AND ACCURATELY DEMARCATED WITH STAKES, RIBBONS, OR OTHER APPROPRIATE MEANS.

THE LOCATION AND EXTENT OF ALL AUTHORIZED LAND DISTURBANCE ACTIVITY SHALL BE DEMARCATED FOR THE DURATION OF THE CONSTRUCTION ACTIVITY. NO LAND DISTURBANCE SHALL OCCUR BEYOND THE DISTURBANCE LIMITS INDICATED ON THE APPROVED PLANS.

PRIOR TO ANY OTHER CONSTRUCTION, A STANDARD CONSTRUCTION ENTRANCE SHALL BE CONSTRUCTED AT EACH POINT OF ENTRY TO OR EXIT FROM THE SITE OR ONTO AN ADJACENT ROAD.

THE FOLLOWING EROSION CONTROL MEASURES SHALL BE IMPLEMENTED PRIOR TO ANY OTHER CONSTRUCTION ACTIVITY:

- THE CONSTRUCTION EXIT, CONSISTING OF A MINIMUM PAD SIZE OF 20 FEET BY 20 FEET WITH A MINIMUM OF 5" THICK STONE, SHALL BE PLACED AS SHOWN ON THE PLAN. THE STONE SIZE SHOULD CONFORM TO COURSE AGGREGATE BETWEEN 1.5" & 3.5" IN DIAMETER AND OVERLAP ON A GEOTEXTILE UNDERLAYER. THE GEOTEXTILE UNDERLAYER SHALL MEET THE REQUIREMENTS OF ASTM M288-96, SECTION 7.1.
- IMMEDIATELY AFTER THE ESTABLISHMENT OF CONSTRUCTION ENTRANCE/EXITS, ALL PERIMETER EROSION CONTROL AND STORM WATER MANAGEMENT DEVICES SHALL BE INSTALLED AS SHOWN ON THE CLEARING PHASE EROSION CONTROL PLAN (PHASE 1).
- TYPE "A" OR TYPE "C" SILT FENCE SHALL BE INSTALLED AT THE PERIMETER OF THE DISTURBED AREA AS SHOWN ON THE PLAN. THE SILT FENCE SHOULD BE PLACED IN ACCORDANCE WITH THE MANUAL FOR EROSION CONTROL IN GEORGIA, TABLE 6-20.2. THE SILT FENCE SHOULD BE KEPT UPRIGHT AT ALL TIMES AND REPAIRED WHEN REQUESTED BY THE SITE INSPECTOR OR THE PROJECT DESIGN PROFESSIONAL OF RECORD. SILT SHOULD BE REMOVED WHEN ACCUMULATION REACHES 1/2" HEIGHT OF THE BARRIER. THE PERIMETER SILT FENCE SHOULD BE INSPECTED ONLY FOR ANY FAILURES. ANY FAILURES OF SLOTTED FENCING SHOULD BE REPAIRED IMMEDIATELY.
- CHECK DAMS SHALL BE INSTALLED IN AREAS OF CONCENTRATED FLOWS AND AS SHOWN ON THE PLAN.
- TREE PROTECTION FENCING SHALL BE INSTALLED PRIOR TO THE START OF ANY LAND DISTURBANCE ACTIVITY. THE FENCING SHALL BE MAINTAINED UNTIL FINAL LANDSCAPING IS INSTALLED. THE TREE PROTECTION FENCING SHOULD BE INSPECTED DAILY. ANY FAILURES OF SLOTTED FENCING SHOULD BE REPAIRED IMMEDIATELY.
- AFTER INSTALLATION OF EROSION CONTROL MEASURES, THE SITE CONTRACTOR SHALL SCHEDULE AN INSPECTION BY THE PROJECT DESIGN PROFESSIONAL. NO OTHER CONSTRUCTION ACTIVITIES SHALL OCCUR UNTIL THE PROJECT DESIGN PROFESSIONAL APPROVES THE INSTALLATION OF SLOTTED EROSION CONTROL MEASURES. IF UNFORESEEN CONDITIONS EXIST IN THE FIELD THAT WARRANT ADDITIONAL EROSION CONTROL MEASURES, THE CONTRACTOR MUST CONSTRUCT ANY ADDITIONAL EROSION CONTROL DEVICES DEEMED NECESSARY BY THE SITE INSPECTOR.
- AFTER APPROVAL OF THE INITIAL EROSION CONTROL INSTALLATION, THE CONTRACTOR MAY PROCEED WITH CLEARING AND GRUBBING ACTIVITIES. AS CLEARING PERMITS THE CONTRACTOR SHALL CONSTRUCT TEMPORARY SEDIMENT POND AND DIVERSION DICES AS SHOWN ON THE CLEARING PHASE EROSION CONTROL PLAN.
- ALL SILT FENCE MUST MEET THE REQUIREMENTS OF SECTION 171-Temporary Silt Fence for the Department of Transportation, STATE OF GEORGIA, STANDARD SPECIFICATIONS, 1983 EDITION.
- ALL ITEMS IN THIS SECTION OF THE SPECIFICATIONS SHALL MEET THE REQUIREMENTS AS SET FORTH IN SECTION 161, 162, 163 AND 164 OF THE GEORGIA D.O.T. STANDARD SPECIFICATIONS, FOR ROADS AND BRIDGES.
- MULCH OR TEMPORARY GRASSING SHALL BE APPLIED TO ALL EXPOSED AREAS WITHIN 14 DAYS OF LAND DISTURBANCE.
- ALL DISTURBED AREAS LEFT MULCHED AFTER 30 DAYS SHALL BE STABILIZED WITH TEMPORARY VEGETATION.
- SEDIMENT AND EROSION CONTROL MEASURES SHALL BE CHECKED AFTER EACH RAIN EVENT. EACH DEVICE IS TO BE MAINTAINED OR REPLACED IF SEDIMENT ACCUMULATION HAS REACHED ONE HALF THE CAPACITY OF THE DEVICE. ADDITIONAL DEVICES MUST BE INSTALLED IF NEW CHANNELS HAVE DEVELOPED.
- THE CONSTRUCTION EXIT SHALL BE MAINTAINED IN A CONDITION WHICH WILL PREVENT THE TRACKING OR FLOW OF MUD ONTO PUBLIC RIGHTS-OF-WAY. THIS MAY REQUIRE PERIODIC TOP DRESSING WITH 1"-3" OF STONE, AS CONDITIONS DEMAND. ALL MATERIALS SPILLED, DROPPED, INSPECTED, OR TRACKED FROM VEHICLES ONTO PUBLIC ROADWAYS OR INTO STORM DRAINS MUST BE REMOVED IMMEDIATELY.
- THE CONTRACTOR SHALL INSPECT EROSION CONTROL MEASURES AT THE END OF EACH WORKING DAY TO ENSURE MEASURES ARE FUNCTIONING PROPERLY. EROSION CONTROL MEASURES SHALL BE MAINTAINED AT ALL TIMES. IF FULL IMPLEMENTATION OF THE APPROVED PLAN DOES NOT PROVIDE FOR EFFECTIVE EROSION CONTROL, ADDITIONAL EROSION AND SEDIMENT CONTROL MEASURES SHALL BE IMPLEMENTED TO CONTROL OR TREAT THE SEDIMENT SOURCE AS DIRECTED BY THE ON SITE INSPECTOR OR THE CIVIL ENGINEER.

FAILURE TO INSTALL, OPERATE, OR MAINTAIN ALL EROSION CONTROL MEASURES WILL RESULT IN ALL CONSTRUCTION BEING STOPPED ON THE JOB UNTIL SUCH MEASURES ARE CORRECTED BACK TO THE APPROVED EROSION CONTROL PLANS.

THE SITE CONTRACTOR WILL BE RESPONSIBLE FOR THE MAINTENANCE OF ALL EROSION CONTROL MEASURES INCLUDING REPAIRING OR REPLACING ANY DAMAGED DEVICES DUE TO ANY CONSTRUCTION ACTIVITY BY OTHERS.

01.15.2020	6	REVISED PER GSWCC COMMENTS
12.12.2019	7	REVISED PER DEVELOPER CHANGES
10.07.2019	5	REVISED PER GDOT & RACETRAC COMMENTS
01.14.2019	4	REVISED PER GDOT & RACETRAC COMMENTS
12.03.2018	5	REVISED PER BARROW COUNTY & RACETRAC COMMENTS
10.05.2018	2	REVISED PER BARROW COUNTY, GASWCC & RACETRAC COMMENTS
08.01.2018	3	REVISED PER BARROW COUNTY, GASWCC & RACETRAC COMMENTS
05.17.2018	1	REVISED PER BARROW COUNTY, GASWCC & RACETRAC COMMENTS
	NO.	DATE

**BENCHMARK**

BENCHMARK TO BE IRON PIN FOUND AT THE CORNER OF PROPERTIES XXX02 103, XXX02 008A, AND XXX02 010.  
 (NORTHING: 1437131.20' - EASTING: 2422134.08' - ELEVATION: 923.01')

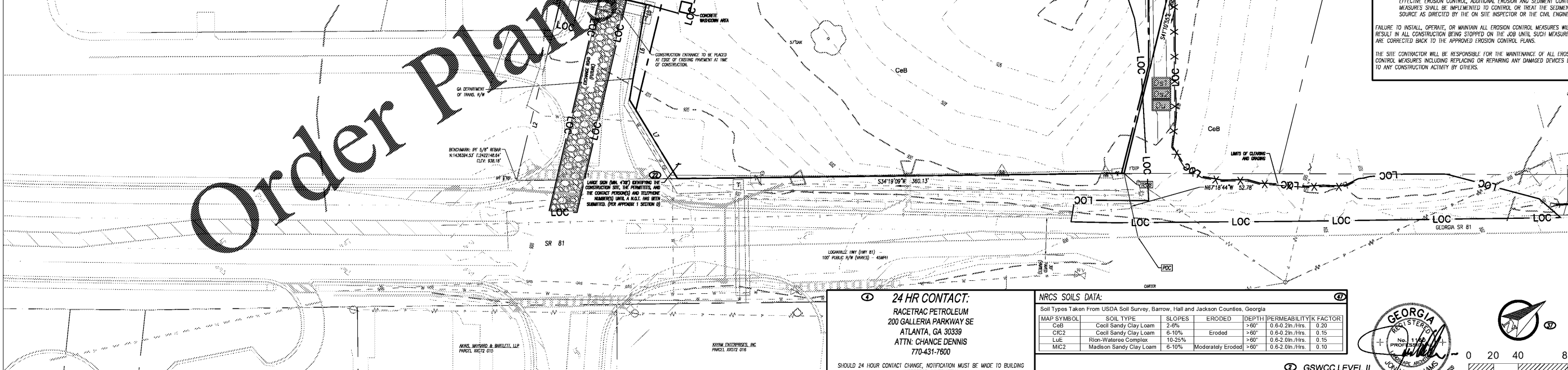
**ES&PC FENCING LEGEND AND LOCATION**

LAND DISTURBANCE: --- X --- X --- X  
 ES&PC SILT FENCE: 1" MIN. SEPARATION (AS REQ'D) --- X --- X --- X  
 ES&PC SILT FENCE 2ND ROW (AS REQ'D): --- X --- X --- X  
 TREE SAVE FENCE (AS REQ'D): --- TF --- TF --- TF  
 LIMITS OF CLEARING: --- LOC --- LOC --- LOC

**EXISTING UTILITIES NOTE**

THE CONTRACTOR SHALL VERIFY ALL UTILITY LOCATIONS PRIOR TO DIGGING, INCLUDING GAS, ELECTRICAL AND TELECOMMUNICATION LINES. EXISTING UTILITIES SHOWN ON PLAN ARE APPROXIMATE. ANY DAMAGE TO SUCH UTILITIES SHALL BE REPAIRED AT THE CONTRACTOR'S EXPENSE. W&A ENGINEERING SHALL BE NOTIFIED OF ANY DISCREPANCIES IMMEDIATELY.

**Order Plans**



CONTACT RACETRAC PETROLEUM, INC. PROJECT MANAGER PRIOR TO ANY REVISIONS TO THE PLAN SUPPLIED BY RACETRAC PETROLEUM, INC.

SEDIMENT AND EROSION CONTROL CHECKLIST ITEMS CORRESPOND TO ①

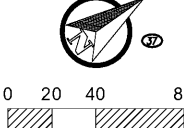
**24 HR CONTACT:**  
 RACETRAC PETROLEUM  
 200 GALLERIA PARKWAY SE  
 ATLANTA, GA 30339  
 ATTN: CHANCE DENNIS  
 770-431-7600

SHOULD 24 HOUR CONTACT CHANGE, NOTIFICATION MUST BE MADE TO BUILDING INSPECTOR IMMEDIATELY.

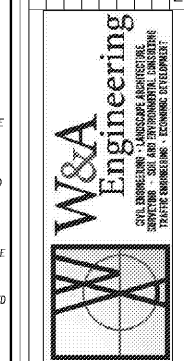
**NRCS SOILS DATA:**

Soil Types Taken From USDA Soil Survey, Barrow, Hall and Jackson Counties, Georgia

MAP SYMBOL	SOIL TYPE	SLOPES	ERODED	DEPTH	PERMEABILITY	K FACTOR
CeB	Cecil Sandy Clay Loam	2-8%	Erodod	>60"	0.6-0.2in./hrs.	0.20
Ch2	Cecil Sandy Clay Loam	6-10%	Erodod	>60"	0.6-0.2in./hrs.	0.15
LuE	Rion-Waree Complex	10-25%	Erodod	>60"	0.6-0.2in./hrs.	0.15
MIC2	Madison Sandy Clay Loam	6-10%	Moderately Erodod	>60"	0.6-0.2in./hrs.	0.10



GSWCC LEVEL II CERTIFICATION # 3588 FOR BID



THESE PLANS ARE GENERAL AND DO NOT CONSTITUTE A CONTRACT. ANY USE OF SAME WITHOUT THE EXPRESSED WRITTEN PERMISSION OF RACETRAC PETROLEUM, INC. IS PROHIBITED.

**Racetrac**  
 RACETRAC PETROLEUM, INC.  
 200 GALLERIA PARKWAY SE  
 SUITE 900 ATLANTA, GA 30339  
 (770) 431-7600

ES&PC PHASE I  
 RACETRAC 316 @ 81  
 839 Loganville Highway  
 Bethlehem, Georgia  
 Barrow County

DRAWN-BY	AGRUNER
DATE	02.28.2018
SCALE	1" = 40'
DRAWING NAME:	Consol-17293.dwg
SHEET NO.	C2.2
VERSION	