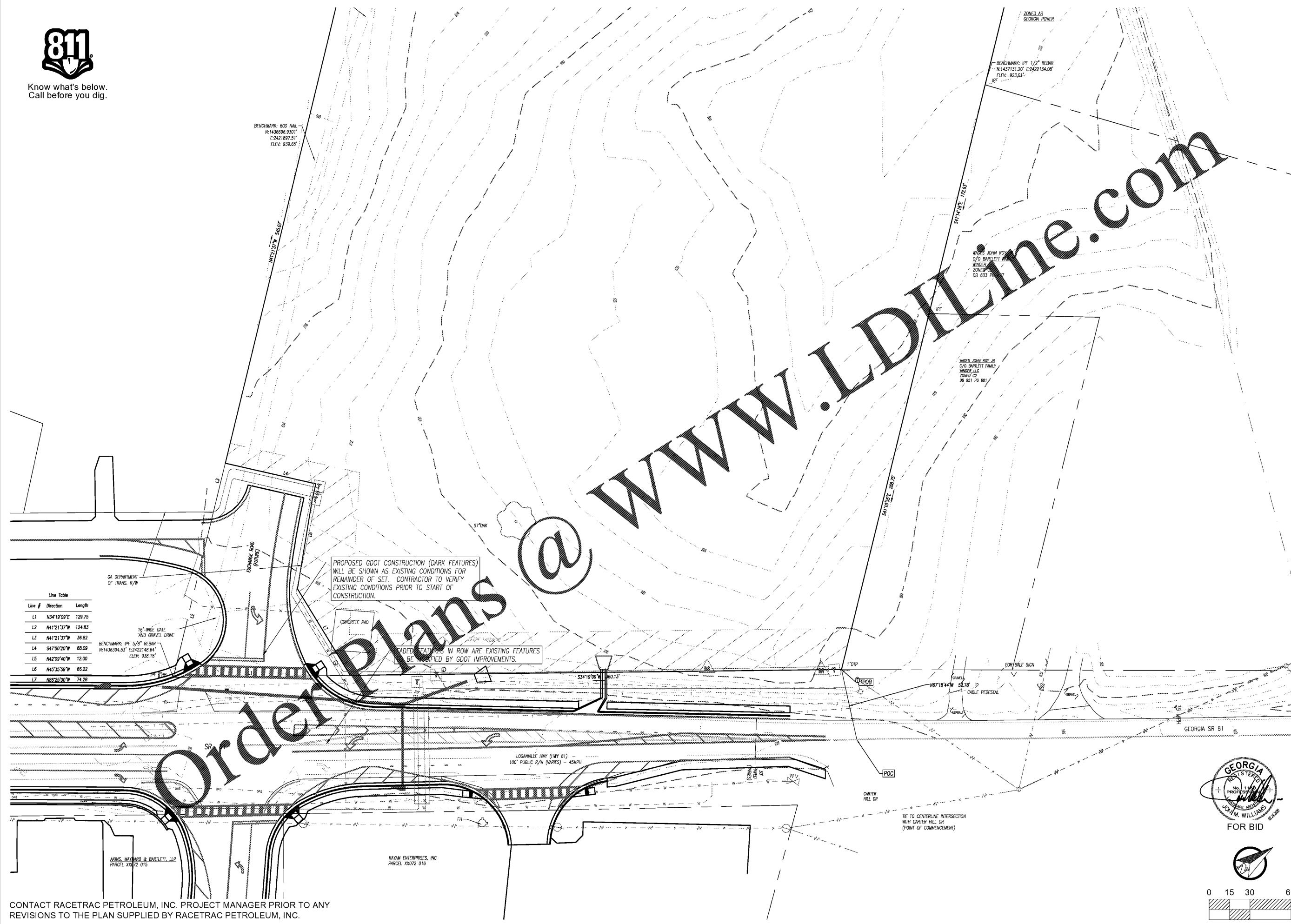




Know what's below.
Call before you dig.



Line Table

Line #	Direction	Length
L1	N34°19'09"E	129.75
L2	N41°21'37"W	124.83
L3	N41°21'37"W	36.82
L4	S47°30'20"W	66.09
L5	N42°09'40"W	12.00
L6	N45°35'58"W	66.22
L7	N86°24'00"W	74.28

PROPOSED GOOT CONSTRUCTION (DARK FEATURES) WILL BE SHOWN AS EXISTING CONDITIONS FOR REMAINDER OF SET. CONTRACTOR TO VERIFY EXISTING CONDITIONS PRIOR TO START OF CONSTRUCTION.

ADDED FEATURES IN ROW ARE EXISTING FEATURES TO BE IDENTIFIED BY GOOT IMPROVEMENTS.

WWW.LDILine.com

Order Plans @

CONTACT RACETRAC PETROLEUM, INC. PROJECT MANAGER PRIOR TO ANY REVISIONS TO THE PLAN SUPPLIED BY RACETRAC PETROLEUM, INC.

<p>W&A Engineering CIVIL ENGINEERING - LANDSCAPE ARCHITECTURE SURVEYING - SOIL AND ENVIRONMENTAL LABORATORY TRAFFIC ENGINEERING - ECONOMIC STUDIES</p>		NO. 1 DATE 10.07.2019
<p>RACETRAC PETROLEUM, INC. 200 GALLERIA PARKWAY SE SUITE 900 ATLANTA, GA 30339 (770) 431-7600</p>		REVISED PER DEVELOPER CHANGES
EXISTING CONDITIONS SURVEY RACETRAC 316 @ 81	839 Loganville Highway Bethlehem, Georgia Barrow County	DRAWN-BY: AGRUNER DATE: 02.28.2018 SCALE: 1" = 30' DRAWING NAME: Conset-17293.dwg
SHEET NO. S1.1		VERSION

FOR BID