

NATIONAL ACCOUNT VENDOR LIST

PRODUCT	VENDOR	CONTACT	PHONE	ADDRESS
1 WALK-IN COOLER AND FREEZERS	CROWN TONKA	DAVID VERDUZCO DAVID@CROWNTONKA.COM	O: (763) 541-1410 M: (763) 210-7403	15600 37TH AVE N, SUITE 100 DULUTH, GA 30096
2 BRICK	MERIDIAN	CRAIG MUMAW CRAIGMUMAW@MERIDIANBRICK.COM BROOKE BRENNER BROOKEBRENNER@MERIDIANBRICK.COM	O: (678) 736-2980 M: (404) 222-1298 O: (404) 733-2906 M: (470) 388-7350	3185 PLEASANT HILL ROAD DULUTH, GA 30096 5472 OAKDALE ROAD SMYRNA, GA 30082
3 STONE	BORAL STONE GROUP	TRESA LOCKLEAR TLOCKLEAR@BORAL.COM	M: (850) 766-2017	
4 FINISH HARDWARE	LOCKNET	JEFF KIRKNER	O: (800) 887-4307 EXTENSION: 131	100 COURCHELLE DR. NICHOLASVILLE, KY 40356
5 CERAMIC TILE AND BASE	DALTILE	TERRIE MILLER	M: (877) 556-5728 M: (214) 309-3408	RACETRAC@DAL TILE.COM
6 LIGHTING PACKAGE	CED	SHAWN CAMPBELL SHAWN.CAMPBELL@CED.COM	O: (817) 923-1983 M: (678) 215-3065	3209 ALTA MERE DRIVE FORT WORTH, TX 76116
7 ELECTRICAL PANELS	SQUARE D	HUNTER NASH	O: (704) 645-2630 M: (980) 234-5760	105 SUMMIT PARK DRIVE SALISBURY, NC 28146
8 HVAC SYSTEM	CARRIER	KEN REVILLA KEN.REVILLA@CARRIER.COM	M: (954) 218-0070	
9 CEILING TILE	ARMSTRONG WORLD INDUSTRIES	LOUIS J. JOHN LJJOHN@ARMSTRONGCEILING.COM	M: (407) 679-6768	2500 COLUMBIA AVENUE LANCASTER, PA 17603
10 ACM - GA, FL & TN	MADISON INDUSTRIES, INC	MARK GLADDEN MGLADDEN@MADISONIND.COM	O: (770) 483-4401 M: (770) 826-4694	1035 IRIS DRIVE, SE CONYERS, GA 30094
11 ACM - LA & DF	LANE SUPPLY, INC	DON LINDSEY DONLINDSEY@PRODIGY.NET	M: (817) 917-1517	120 FAIRVIEW ARLINGTON, TX 76010
12 PAINT	SHERWIN WILLIAMS	DWIGHT LECLAIR DLECLAIR@SHERWIN.COM	M: (678) 361-6108	2800 CENTURY PARKWAY NE, SUITE 1000 ATLANTA, GA 30345

* ALL TILE ORDERS MUST BE PLACED THROUGH THE NATIONAL ACCOUNT CONTACT INFORMATION NOTED HERE (360 PROGRAM)

SHOP DRAWING REQUIREMENT: ALL SHOP DRAWINGS ARE REQUIRED: STOREFRONT, A.C.M., MASONRY AND CAST STONE, H.V.A.C., FIRE SPRINKLER (WHEN APPLICABLE) STRUCTURAL (SEE 5000 FOR REQUIREMENTS)

WHERE PRODUCTS ARE NOT INDICATED ON THE NATIONAL ACCOUNT VENDOR LIST OR THE REFERRED VENDOR LIST AND SPECIFIED ONLY BY REFERENCED STANDARDS, THE CONTRACTOR SHALL INSTALL ANY PRODUCT MANUFACTURER MEETING STANDARDS. WHERE PRODUCTS ARE INDICATED ON THE NATIONAL ACCOUNT VENDOR LIST OR REFERRED VENDOR LIST AND ONLY ONE MANUFACTURER IS SHOWN, THE CONTRACTOR CAN USE ONLY THE MANUFACTURER LISTED. ALTERNATES TO THOSE LISTED ARE NOT ACCEPTABLE.

NOTES:
 • PROVIDE 48 HOUR NOTIFICATION TO VENDOR FOR INSPECTIONS.
 • NATIONAL PRICING CONTRACTS ARE IN PLACE WITH ALL OF THE VENDORS INDICATED ABOVE.
 • COORDINATE PRODUCT LEAD TIMES WITH VENDOR.

PROJECT TEAM

CLIENT:
 RACETRAC
 GPD GROUP PROFESSIONAL CORP.
 200 GALLERIA PARKWAY SOUTHEAST
 SUITE 900
 ATLANTA, GA 30339
 PHONE: (770) 431-7600

ARCHITECT:
 GPD GROUP PROFESSIONAL CORP.
 520 S. MAIN STREET, SUITE 2531
 AKRON, OH 44311
 CONTACT: ALISSA COBB, (678) 781-5069

STRUCTURAL:
 GPD GROUP PROFESSIONAL CORP.
 520 S. MAIN STREET, SUITE 2531
 AKRON, OH 44311
 CONTACT: ALISSA COBB, (678) 781-5069

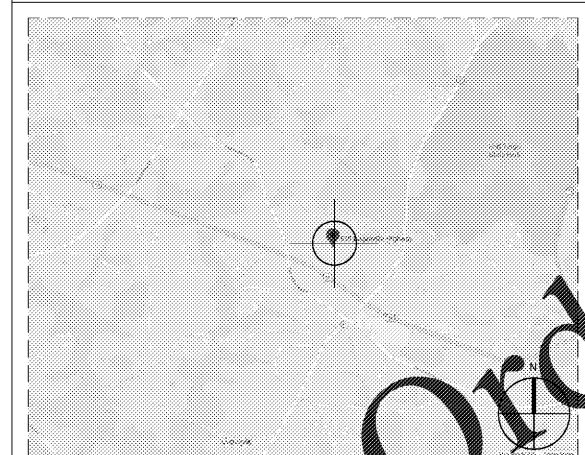
MECHANICAL:
 GPD GROUP PROFESSIONAL CORP.
 520 S. MAIN STREET, SUITE 2531
 AKRON, OH 44311
 CONTACT: ALISSA COBB, (678) 781-5069

PLUMBING:
 GPD GROUP PROFESSIONAL CORP.
 520 S. MAIN STREET, SUITE 2531
 AKRON, OH 44311
 CONTACT: ALISSA COBB, (678) 781-5069

ELECTRICAL:
 GPD GROUP PROFESSIONAL CORP.
 520 S. MAIN STREET, SUITE 2531
 AKRON, OH 44311
 CONTACT: ALISSA COBB, (678) 781-5069

CIVIL:
 W & A ENGINEERING
 2470 DANIELLS BRIDGE RD.
 BLDG. 100, SUITE 161
 ATHENS, GA 30606
 PHONE: (706) 310-0400

SITE MAP



SYMBOL LEGEND

BREAK MARK		ELEVATION TAG	
DATUM MARK		REVISION CLOUD	
WALL TAG		COLUMN DESIGNATION	
WINDOW TAG		FACE OF STUD DESIGNATION	
DOOR TAG			
EQUIPMENT TAG			
KEYNOTE			
SECTION MARKER			

PROJECT INFORMATION

APPLICABLE CODE:
 2018 INTERNATIONAL BUILDING CODE W/ GEORGIA AMENDMENTS
 2012 INTERNATIONAL MECHANICAL CODE W/ GEORGIA AMENDMENTS
 2014 NATIONAL ELECTRICAL CODE
 2012 INTERNATIONAL FIRE PREVENTION CODE
 2009 INTERNATIONAL ENERGY CONSERVATION CODE W/ GEORGIA SUPPLEMENTS AND AMENDMENTS
 2012 GEORGIA ACCESSIBILITY CODE W/ 2015 GEORGIA AMENDMENTS

CONSTRUCTION TYPE: V - B (UNSPRINKLERED)

OCCUPANCY: M

BUILDING AREA: 9,000 SF (MODIFICATIONS PER TABLE 503 NOT APPLIED) 5,411 SF (BUILDING ENVELOPE) 419 SF (PATIO) 5,830 SF (TOTAL)

NUMBER OF STORIES: 1

WIND CRITERIA:
 ULTIMATE WIND SPEED, Vu11 (3 SEC. GUST) = 115 MPH
 NOMINAL WIND SPEED, Vw50 (3 SEC. GUST) = 89 MPH

OCCUPANT LOAD:
 MERCANTILE
 GRADE FLOOR AREAS 1 PER 30 GSF
 STOCK/SHIPPING 1 PER 300 GSF
 OFFICE AREAS 1 PER 100 GSF

BUILDING AREA/OCCUPANCY LOADS:
 TOTAL GROSS AREA: 5,411 SF

CUSTOMER/RETAIL AREA:	2,895 GSF / 30 SF =	97 PERSONS
BACK OF HOUSE/EMPLOYEE WORK AREA:	2,037 GSF / 300 SF =	7 PERSONS
CASH WRAP:	205 GSF / 100 SF =	3 PERSONS
FOOD AREA:	274 GSF / 100 SF =	3 PERSONS
PATIO EXTERIOR SEATING:	[16 FIXED SEATS]	16 PERSONS
TOTAL:		126 PERSONS

PLUMBING

REQUIRED	WC MALE	WC FEMALE	AV. MEN	LAV FEMALE
1	1			1
PROVIDED	2		2	2

NOTE: REVEALAGE FOUNTAIN WITH DRINKING WATER OFFERING IS USED TO SATISFY THE DRINKING FOUNTAIN REQUIREMENT.

INDEX OF DRAWINGS

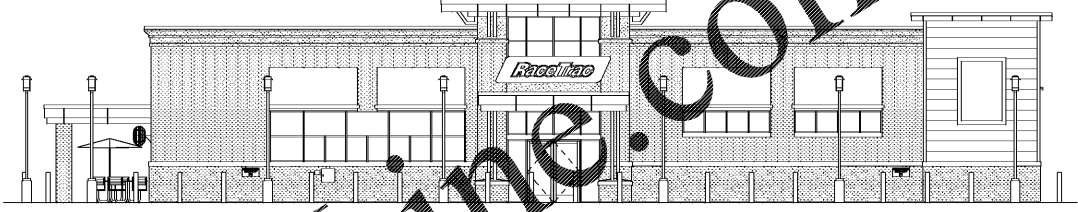
SHEET NUMBER	TITLE
A000	COVER SHEET
A001	ACCESSIBILITY DETAILS
A002	ACCESSIBILITY PLAN
A003	LIFE SAFETY PLAN
A005	GENERAL REQUIREMENTS
A010	DUMPSTER ENCLOSURE PLAN
A011	DUMPSTER ENCLOSURE DETAILS
A100	EXTERIOR STAIRWALK PLAN AND DETAILS
A110	FLOOR REFERENCE PLAN
A111	PARTITION TYPES
A120	FLOOR DIMENSION PLAN
A121	TOWER FLOOR DIMENSION PLAN AND DETAILS
A123	RESTROOM ENLARGED PLAN
A126	CORNER TOWER PLAN AND DETAILS
A140	FLOOR FINISH PLAN
A141	FLOOR FIXTURE AND EQUIPMENT PLAN
A141	EQUIPMENT SCHEDULE
A150	REFLECTED CEILING PLAN AND DETAILS
A151	TOWER REFLECTED CEILING PLAN AND DETAILS
A152	INTERIOR CEILING DETAILS
A160	ENLARGED CASH WRAP AND DETAILS
A200	ROOF PLAN
A201	ROOF DETAILS
A300	EXTERIOR ELEVATIONS
A410	WALL SECTIONS
A411	WALL SECTIONS
A420	WALL SECTIONS
A421	WALL SECTIONS
A422	WALL SECTIONS
A423	WALL SECTIONS
A430	DETAILS
A431	DETAILS
A500	ROOM FINISH AND MATERIAL SCHEDULES
A501	INTERIOR ELEVATIONS
A502	INTERIOR ELEVATIONS
A503	EQUIPMENT CLEARANCES
A510	RESTROOM ELEVATIONS
A511	RESTROOM ELEVATIONS
A600	WINDOW ELEVATIONS AND DETAILS
A601	WINDOW DETAILS
A700	DOOR HARDWARE AND SCHEDULE
A701	DOOR DETAILS
C100	FUEL CANOPY PLANS AND ELEVATIONS
S000	GENERAL STRUCTURAL NOTES
S001	GENERAL STRUCTURAL NOTES
S002	SPECIAL INSPECTIONS AND NOTES
S120	FOUNDATION PLAN
S200	ROOF FRAMING PLAN
S201	HIGH ROOF FRAMING PLANS
S430	TYPICAL DETAILS
S431	FOUNDATION SECTIONS AND DETAILS

SHEET NUMBER	TITLE
S432	TYPICAL STEEL DETAILS
S433	FRAMING SECTIONS AND DETAILS
S434	FRAME ELEVATIONS AND DETAILS
M001	MECHANICAL NOTES AND LEGENDS
M002	MECHANICAL EQUIPMENT SCHEDULES
M120	MECHANICAL PLAN
M200	MECHANICAL ROOF PLAN
M430	MECHANICAL DETAILS
M431	MECHANICAL DETAILS
P001	PLUMBING NOTES AND LEGENDS
P002	PLUMBING EQUIPMENT SCHEDULE
P100	PLUMBING ROUGH-IN PLAN
P110	SANITARY PLAN
P120	DOMESTIC WATER PLAN
P410	PLUMBING ISOMETRICS
P430	PLUMBING DETAILS
P431	PLUMBING DETAILS
SP-1	SITE PHOTOMETRY PLAN
E001	ELECTRICAL NOTES, LEGENDS AND LIGHT FIXTURE SCHEDULE
E002	ELECTRICAL EQUIPMENT SCHEDULE
E010	ELECTRICAL SITE PLAN
E100	ELECTRICAL ROUGH-IN PLAN
E110	POWER PLAN
E111	ENLARGED POWER PLANS
E120	LOW VOLTAGE PLAN
E150	LIGHTING PLAN
E200	ROOF POWER PLANS
E410	ELECTRICAL RISER DIAGRAM
E430	ELECTRICAL PANEL SCHEDULES
E431	ELECTRICAL PANEL SCHEDULES
E500	CONTROL DIAGRAMS
E501	CONTROL DIAGRAMS
E502	CONTROL DIAGRAMS
E600	ELECTRICAL DETAILS
E601	ELECTRICAL DETAILS

RaceTrac

5.5k

HWY 316 @ 81
 BETHLEHEM, GA
 RACETRAC #1304



RaceTrac
 COPYRIGHT NOTICE
 THESE PLANS ARE SUBJECT TO FEDERAL COPYRIGHT LAWS; ANY USE OF SAME WITHOUT THE EXPRESSED WRITTEN PERMISSION OF RACETRAC PETROLEUM, INC. IS PROHIBITED. 2016 RACETRAC PETROLEUM, INC.

DESIGN PROFESSIONALS

GPD GROUP
 Professional Corporation
 520 S. MAIN STREET, STE 2531
 AKRON, OH 44311

ISSUE/REVISION RECORD

DATE	DESCRIPTION
01/25/19	PERMIT SET
03/16/20	REFRESH TO 2020.0113

RaceTrac
 RACETRAC PETROLEUM, INC.
 200 GALLERIA PARKWAY SOUTHEAST
 SUITE 900
 ATLANTA, GEORGIA 30339
 (770) 431-7600

PROJECT NAME
HWY 316 @ 81

BETHLEHEM
GA 30620
839 LOGANVILLE HWY

RACETRAC STORE NUMBER
#1304

PROTOTYPE SERIES 5.5K 2.0
2018 LH MO 0405

PLAN MODIFICATION NOTICE
SPB NO. 0405 DATE 12/18/18

STANDARD PLAN BULLETINS (SPB) MODIFY THE PROTOTYPE SERIES SET NOTED ABOVE. THE LISTED SPB REPRESENTS THE LATEST MODIFICATION INCORPORATED TO THIS PROTOTYPE SERIES SET AT ORIGINAL RELEASE. THE ISSUE/REVISION RECORD COLUMN ABOVE LISTS ANY REVISIONS OR SPB INCORPORATED TO THIS SET AFTER THE ORIGINAL RELEASE. CONTACT RACETRAC ENGINEERING AND CONSTRUCTION FOR ANY SUBSEQUENT BULLETINS NOT INCORPORATED HEREIN.

PROFESSIONAL SEAL

PROJECT NUMBER
 2018157.19

SHEET TITLE
COVER SHEET

SHEET NUMBER
A000