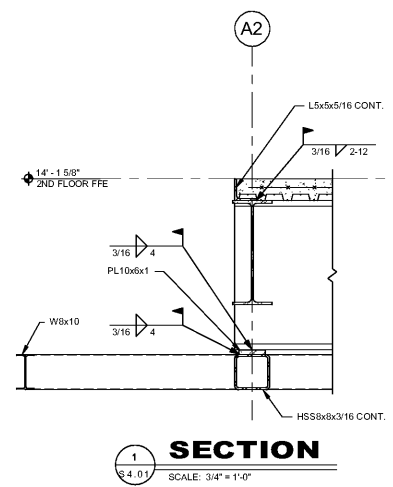
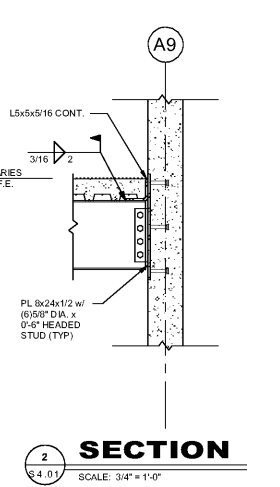


SCOPE DOCUMENTS
 The Construction Documents have not been completed therefore this drawing may be incomplete or not coordinated. The documents issued indicate the general scope of the Project. The Contractor is responsible for complete and coordinated pricing and Work, and shall include all items necessary for the proper execution and completion of the Project, whether indicated or not. All components of the Project shall comply with any and all requirements of national, state, and local codes. The Contractor shall inform the Owner and Architect of any omissions, inaccuracies or errors in the information provided. If no notice is given and any omissions, inaccuracies or errors are discovered, the Architect's decision on items of Work included in the scope shall be binding on the Contractor, when consistent with the general scope and quality of the Project.

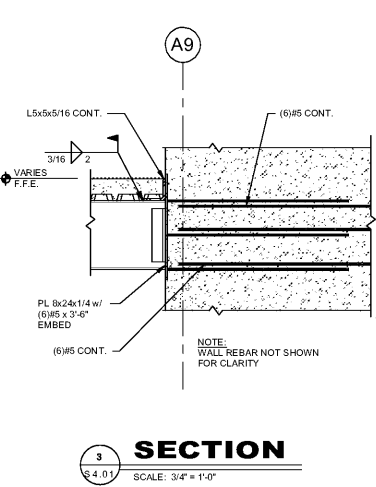
ISSUANCES		
No.	Drawing Issue Description	Date
1	80% CD / GMP	10/04/2019
A	ADD BIDDUM A	10/22/2019
B	ADD BIDDUM B	12/15/2019



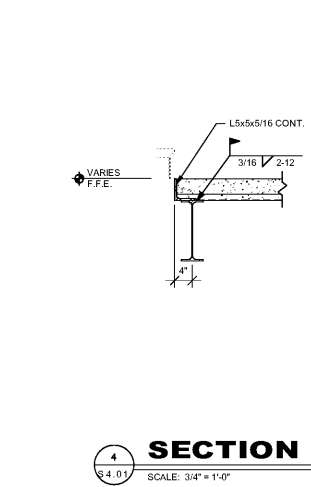
SECTION 1
 SCALE: 3/4" = 1'-0"



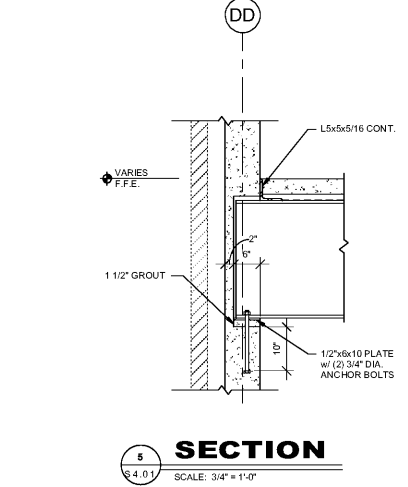
SECTION 2
 SCALE: 3/4" = 1'-0"



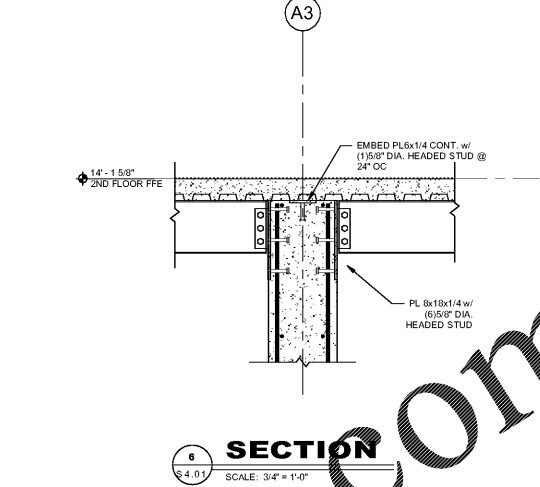
SECTION 3
 SCALE: 3/4" = 1'-0"



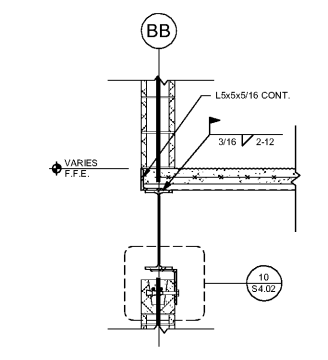
SECTION 4
 SCALE: 3/4" = 1'-0"



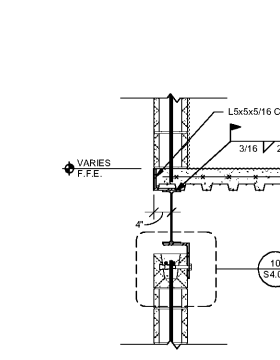
SECTION 5
 SCALE: 3/4" = 1'-0"



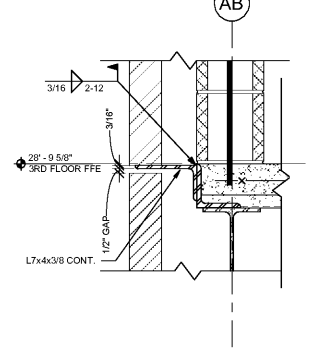
SECTION 6
 SCALE: 3/4" = 1'-0"



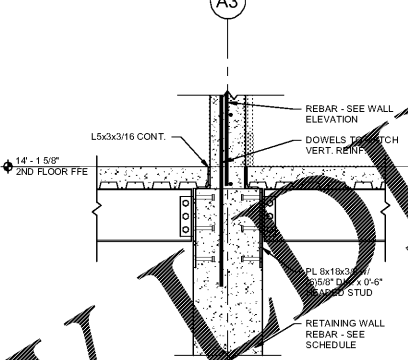
SECTION 7
 SCALE: 3/4" = 1'-0"



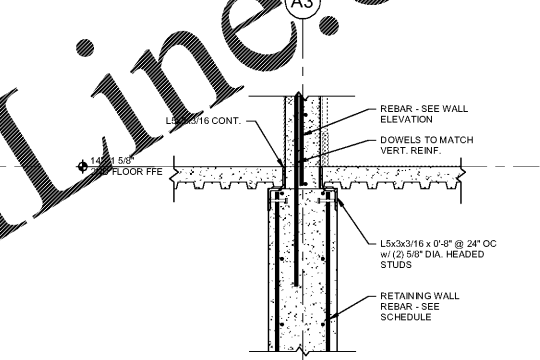
SECTION 8
 SCALE: 3/4" = 1'-0"



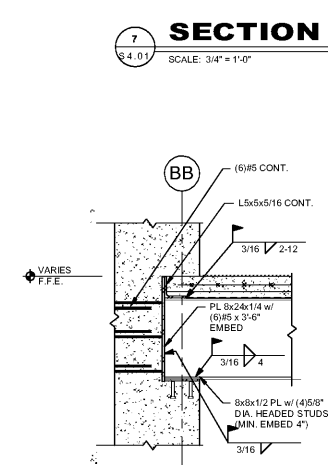
SECTION 9
 SCALE: 1 1/2" = 1'-0"



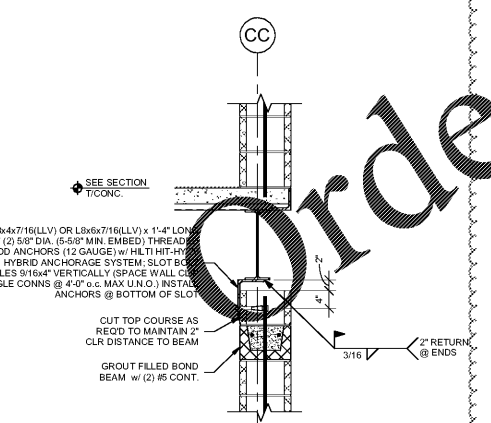
SECTION 10
 SCALE: 3/4" = 1'-0"



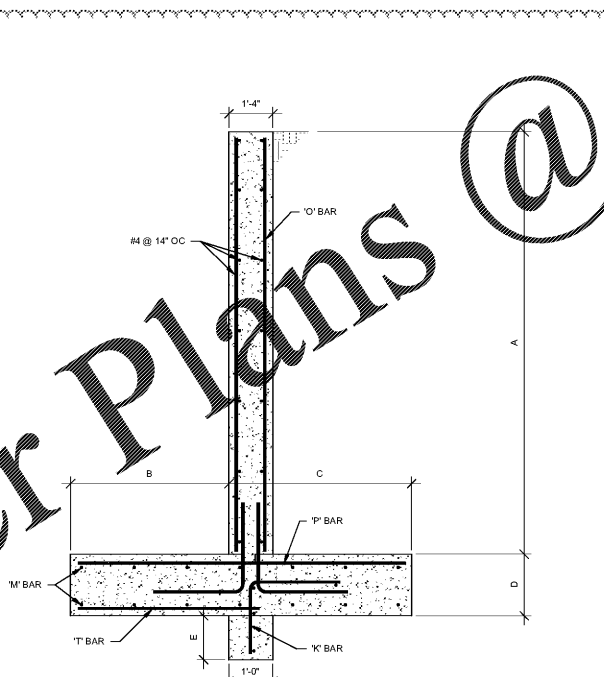
SECTION 11
 SCALE: 3/4" = 1'-0"



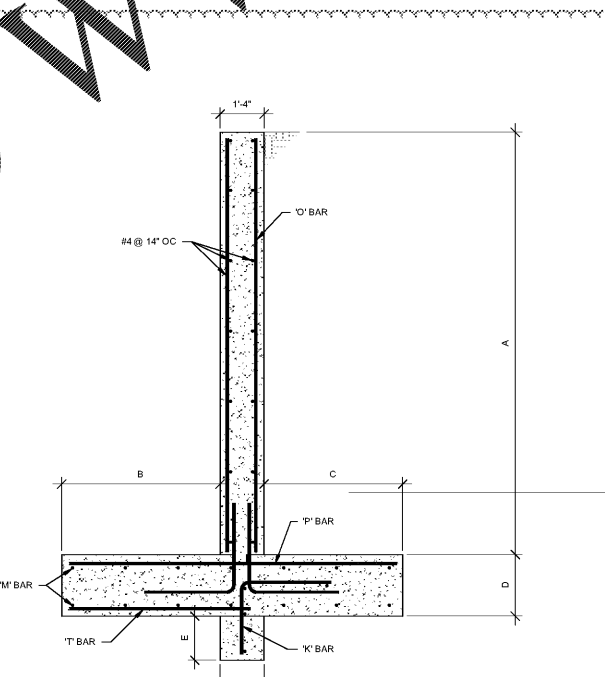
SECTION 12
 SCALE: 3/4" = 1'-0"



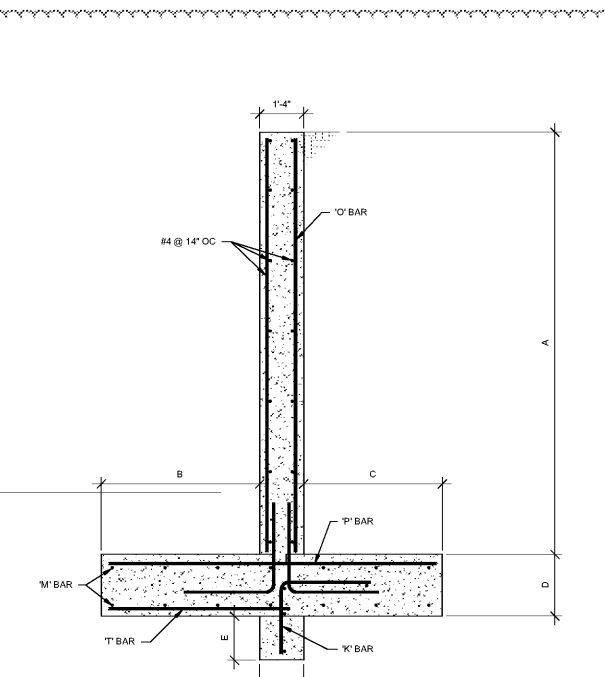
SECTION 13
 SCALE: 3/4" = 1'-0"



WALL DIMENSIONS					REINFORCING				
A	B	C	D	E	O-BARS	M-BARS	P-BARS	K-BARS	T-BARS
10'-0"	N/A	N/A	N/A	N/A	#5 @ 16"	N/A	N/A	N/A	N/A
4'-0"	0'-8"	2'-4"	1'-4"	N/A	#5 @ 16"	(5)#5	#5 @ 9"	N/A	N/A



WALL DIMENSIONS					REINFORCING				
A	B	C	D	E	O-BARS	M-BARS	P-BARS	K-BARS	T-BARS
15'-0"	5'-0"	7'-0"	2'-0"	3'-0"	#5 @ 7"	(16)#6	#5 @ 7"	#5 @ 14"	#5 @ 10"
13'-0"	5'-0"	5'-0"	2'-0"	3'-0"	#5 @ 10"	(13)#6	#5 @ 7"	#5 @ 14"	#5 @ 14"
11'-0"	5'-0"	5'-0"	2'-0"	1'-4"	#5 @ 11"	(13)#6	#5 @ 9"	#4 @ 14"	N/A
9'-0"	5'-0"	4'-6"	1'-4"	N/A	#5 @ 16"	(12)#5	#5 @ 12"	NA	N/A
7'-0"	5'-0"	3'-0"	1'-4"	N/A	#5 @ 16"	(12)#5	#5 @ 12"	NA	N/A
5'-0"	5'-0"	2'-0"	1'-4"	N/A	#5 @ 16"	(5)#5	#5 @ 12"	NA	N/A
3'-0"	1'-0"	1'-6"	1'-4"	N/A	#5 @ 16"	(4)#5	#5 @ 12"	NA	N/A



WALL DIMENSIONS					REINFORCING				
A	B	C	D	E	O-BARS	M-BARS	P-BARS	K-BARS	T-BARS
15'-0"	5'-0"	7'-0"	2'-0"	3'-0"	#6 @ 7"	(16)#6	#5 @ 7"	#5 @ 14"	#5 @ 10"
13'-0"	5'-0"	5'-0"	2'-0"	3'-0"	#6 @ 10"	(13)#6	#5 @ 7"	#5 @ 14"	#5 @ 14"
11'-0"	5'-0"	5'-0"	2'-0"	1'-4"	#5 @ 11"	(13)#6	#5 @ 9"	#4 @ 14"	N/A
9'-0"	5'-0"	4'-6"	1'-4"	N/A	#5 @ 16"	(12)#5	#5 @ 12"	NA	N/A
7'-0"	5'-0"	3'-0"	1'-4"	N/A	#5 @ 16"	(12)#5	#5 @ 12"	NA	N/A
5'-0"	5'-0"	2'-0"	1'-4"	N/A	#5 @ 16"	(12)#5	#5 @ 12"	NA	N/A
3'-0"	5'-0"	3'-0"	1'-4"	N/A	#5 @ 16"	(12)#5	#5 @ 12"	NA	N/A

SECTION 15
 SCALE: 3/4" = 1'-0"

SECTION 16
 SCALE: 3/4" = 1'-0"

Order Plans @ www.LDOnline.com



**GRADY HIGH SCHOOL
 RENOVATION + ADDITION**

929 CHARLES ALLEN DR. NE
 ATLANTA, GA 30309

ATLANTA PUBLIC SCHOOLS

SECTIONS & DETAILS

J. MAC WILLETT, PE	20180283
Principal Designer	Project No.
CHRIS BRYANT, EIT	12132019
Project Manager	Date
CHRIS BRYANT, EIT	
Project Engineer	
JENNIFER DUHON, EIT	
Staff Engineer	

S4.01

PROJECT NUMBER: 2018008 PROJECT NAME: GRADY HIGH SCHOOL RENOVATION + ADDITION
 SHEET NUMBER: S4.01 - SECTIONS & DETAILS
 C:\Users\cbryant\Documents\Ready_Hs_struct_2017_central_city\am\KRB2.rvt
 12/12/2019 @ 2:24 PM