



SCOPE DOCUMENTS

The Contract Documents Issued for [Conceptual Design, Schematic Design, Design Development, Partial Construction Documents or Other Issuance up to Issued for Construction] are intended to be at that level of development and as such, may be neither complete nor coordinated. The [Construction Manager, Contractor, Design/Builder] is responsible for complete and coordinated pricing [and execution] of the Work, and shall include items necessary for the proper execution and completion of the Work, as shown, specified, reasonably inferred or required for a complete Project. For Work of designed design, systems, assemblies, components and materials shall comply with national, state and local code requirements. The [Construction Manager, Contractor, Design/Builder] shall inform the Owner and Architect, in timely fashion, of any discovered omissions, inaccuracies or errors in the Contract Documents.

ISSUANCES		
No.	Drawing Issue Description	Date
1	DESIGN DEVELOPMENT	3/18/20

FTE - 450
EXISTING IU - 38
PROPOSED IU - 33

BARACK & MICHELLE OBAMA ACADEMY



970 Martin St SE, Atlanta, GA 30315
ATLANTA PUBLIC SCHOOL

ELECTRICAL PARTIAL HVAC/PLUMBING PLAN LOWER LEVEL AREA B

ROBERT JUST	20190109
Principal/Designer	Project No.
S. TARKHAN	03/15/20
Project Manager	Date
B. FERREN	
Project Architect	
E. SAADAT	
Staff Architect	
B. FERREN, J. KLEIN	
Interior Design	

E5.12

HVAC/ELECTRICAL SCHEDULE								
MARK	VOLTPHASE	FLA	KVA	MCA	MOCP	DISC. SIZE (F) = FUSED	WIRE SIZE	NOTES
VRF-C-702A	208Y1	-	-	1.6	15/2	MTR RTD SW	2#12, 1#12G, 1/2" TC	-
VRF-C-802A	208Y1	-	-	1.6	15/2	MTR RTD SW	2#12, 1#12G, 1/2" TC	-
VRF-C-302A	208Y1	-	-	1.8	15/2	MTR RTD SW	2#12, 1#12G, 1/2" TC	-
VRF-C-305A	208Y1	-	-	1.8	15/2	MTR RTD SW	2#12, 1#12G, 1/2" TC	-
VRF-C-306A	208Y1	-	-	1.8	15/2	MTR RTD SW	2#12, 1#12G, 1/2" TC	-
VRF-C-701A	208Y1	-	-	1.8	15/2	MTR RTD SW	2#12, 1#12G, 1/2" TC	-
VRF-C-707A	208Y1	-	-	1.8	15/2	MTR RTD SW	2#12, 1#12G, 1/2" TC	-
VRF-C-708A	208Y1	-	-	1.8	15/2	MTR RTD SW	2#12, 1#12G, 1/2" TC	-
VRF-C-602A	208Y1	-	-	0.8	15/2	MTR RTD SW	2#12, 1#12G, 1/2" TC	-
VRF-C-805A	208Y1	-	-	3.4	15/2	MTR RTD SW	2#12, 1#12G, 1/2" TC	-
VRF-C-803A	208Y1	-	-	1.5	15/2	MTR RTD SW	2#12, 1#12G, 1/2" TC	-
VRF-C-812A	208Y1	-	-	0.7	15/2	MTR RTD SW	2#12, 1#12G, 1/2" TC	-
VRF-C-813A	208Y1	-	-	0.6	15/2	MTR RTD SW	2#12, 1#12G, 1/2" TC	-
VRF-C-810A	208Y1	-	-	0.3	15/2	MTR RTD SW	2#12, 1#12G, 1/2" TC	-

GENERAL NOTES:

- ALL DISCONNECT SWITCHES SHALL BE HEAVY DUTY, 250 VOLT, WITH VARIABLE COVER INTERLOCK, NEMA 1 FOR INDOOR USE AND NEMA 3R FOR OUTDOOR USE.
- OVERCURRENT PROTECTION, WIRE SIZE AND NUMBER OF CONNECTION POINTS FOR MECHANICAL HVAC EQUIPMENT IS FOR ITEMS AS SPECIFIED. COORDINATE WITH MECHANICAL CONTRACTOR AND MAKE NECESSARY CHANGES PRIOR TO INSTALLATION FOR ACTUAL EQUIPMENT FURNISHED AT NO COST TO OWNER. REFER TO MECHANICAL DRAWINGS FOR EXACT LOCATIONS OF ALL MECHANICAL EQUIPMENT.
- UNIT FED FROM OUTDOOR UNIT, SEE MANUFACTURER'S WIRING DIAGRAM.

HVAC/ELECTRICAL SCHEDULE								
MARK	VOLTPHASE	FLA	KVA	MCA	MOCP	DISC. SIZE (F) = FUSED	WIRE SIZE	NOTES
VAV-2-1	-	-	-	-	-	30/2	-	3
VAV-2-2	-	-	-	-	-	30/2	-	3
VAV-2-3	208Y1	18.7	3.90	22.1	25/2	(F) 30/2/25	3#8, 1#10G, 1" TC	-
VAV-2-4	-	-	-	-	-	30/2	-	3
VAV-2-5	208Y1	18.7	3.90	22.1	25/2	(F) 30/2/25	3#8, 1#10G, 1" TC	-
VAV-2-6	-	-	-	-	-	30/2	-	3
VAV-2-7	208Y1	18.7	3.90	22.1	25/2	(F) 30/2/25	3#8, 1#10G, 1" TC	-

GENERAL NOTES:

- ALL DISCONNECT SWITCHES SHALL BE HEAVY DUTY, 250 VOLT, WITH VARIABLE COVER INTERLOCK, NEMA 1 FOR INDOOR USE AND NEMA 3R FOR OUTDOOR USE.
- OVERCURRENT PROTECTION, WIRE SIZE AND NUMBER OF CONNECTION POINTS FOR MECHANICAL HVAC EQUIPMENT IS FOR ITEMS AS SPECIFIED. COORDINATE WITH MECHANICAL CONTRACTOR AND MAKE NECESSARY CHANGES PRIOR TO INSTALLATION FOR ACTUAL EQUIPMENT FURNISHED AT NO COST TO OWNER. REFER TO MECHANICAL DRAWINGS FOR EXACT LOCATIONS OF ALL MECHANICAL EQUIPMENT.
- UNIT FED FROM OUTDOOR UNIT, SEE MANUFACTURER'S WIRING DIAGRAM.

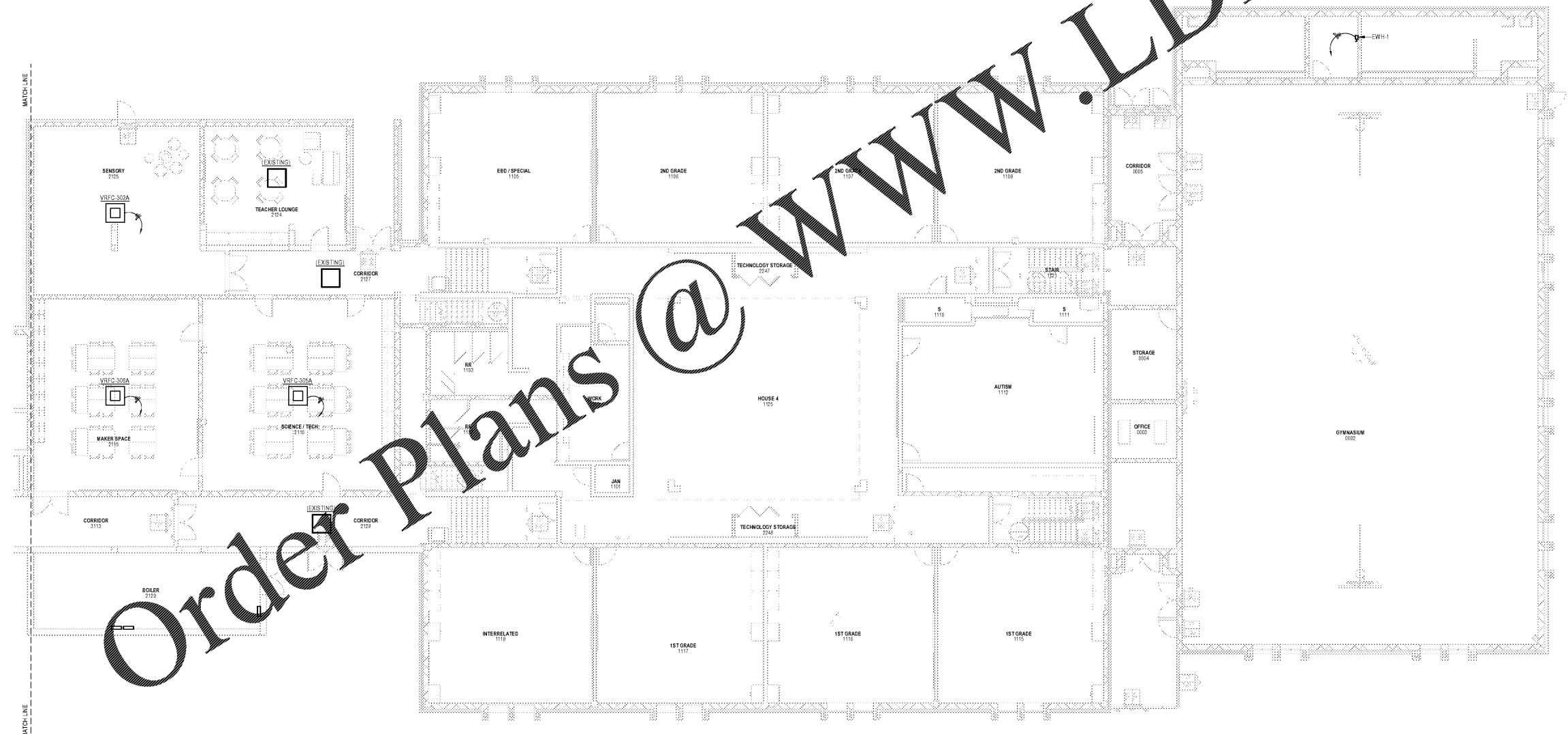
HVAC/ELECTRICAL SCHEDULE								
MARK	VOLTPHASE	FLA	KVA	MCA	MOCP	DISC. SIZE (F) = FUSED	WIRE SIZE	NOTES
AHU-1A	208Y3	9.7	3.50	-	20/3	(F) 30/3/20	3#10, 1#10G, 3/4" TC	1
EF-1	120Y1	4.4	0.52	-	15/1	MTR RTD SW	2#12, 1#12G, 1/2" TC	-
EF-2	120Y1	1.0	0.10	-	15/1	MTR RTD SW	2#12, 1#12G, 1/2" TC	-
EF-3	120Y1	4.4	0.52	-	15/1	MTR RTD SW	2#12, 1#12G, 1/2" TC	-
EF-4	120Y1	1.0	0.10	-	15/1	MTR RTD SW	2#12, 1#12G, 1/2" TC	-
EF-A	120Y1	1.1	0.13	-	15/1	MTR RTD SW	2#12, 1#12G, 1/2" TC	-
EW-1	120Y1	16.0	2.00	-	25/1	30/2	2#10, 1#10G, 1/2" TC	-
FDU-1	208Y1	4.3	-	5.4	15/2	15/2	2#10, 1#10G, 1/2" TC	-
HR-1	208Y1	18.7	3.90	22.1	25/2	(F) 30/2/25	3#8, 1#10G, 1" TC	-
RTU-1	208Y3	41.7	15.00	46.1	60/3	(F) 60/3/60	3#6, 1#10G, 1" TC	-
RTU-2A	208Y3	68.8	24.75	75.9	100/3	(F) 100/3/100	3#5, 1#8G, 1-1/4" TC	-
RTU-2B	208Y3	68.8	24.75	75.9	100/3	(F) 100/3/100	3#5, 1#8G, 1-1/4" TC	-

GENERAL NOTES:

- ALL DISCONNECT SWITCHES SHALL BE HEAVY DUTY, 250 VOLT, WITH VARIABLE COVER INTERLOCK, NEMA 1 FOR INDOOR USE AND NEMA 3R FOR OUTDOOR USE.
- OVERCURRENT PROTECTION, WIRE SIZE AND NUMBER OF CONNECTION POINTS FOR MECHANICAL HVAC EQUIPMENT IS FOR ITEMS AS SPECIFIED. COORDINATE WITH MECHANICAL CONTRACTOR AND MAKE NECESSARY CHANGES PRIOR TO INSTALLATION FOR ACTUAL EQUIPMENT FURNISHED AT NO COST TO OWNER. REFER TO MECHANICAL DRAWINGS FOR EXACT LOCATIONS OF ALL MECHANICAL EQUIPMENT.
- UNIT FED FROM OUTDOOR UNIT, SEE MANUFACTURER'S WIRING DIAGRAM.

SCHEDULE NOTES:

- PROVIDE CEILING MOUNTED SMOKE DETECTOR WITH WIRING TO CONTROL PANEL.



Order Plans @ www.LDILine.com

1 ELECTRICAL PARTIAL HVAC/PLUMBING PLAN - LEVEL 1 - AREA B
1/8" = 1'-0"