



**COOPER CARRY**  
THE CENTER FOR CONNECTIVE ARCHITECTURE

191 Peachtree Street NE  
Suite 2400  
Atlanta, GA 30305-1770  
(404) 237-2000  
coopercarry.com

©2019 COOPER CARRY

**SCOPE DOCUMENTS**

The Contract Documents issued for Conceptual Design, Schematic Design, Design Development, Partial Construction Documents or Other Issuance up to Issued for Construction are intended to be at that level of development and as such, may be neither complete nor coordinated. The [Construction Manager, Contractor, Design/Builder] is responsible for complete and coordinated pricing [and execution] of the Work, and shall include items necessary for the proper execution and completion of the Work, as shown, specified, reasonably inferred or required for a complete Project. For Work of designed design, systems, assemblies, components and materials shall comply with national, state and local code requirements. The [Construction Manager, Contractor, Design/Builder] shall inform the Owner and Architect, in timely fashion, of any discovered omissions, inconsistencies or errors in the Contract Documents.

**ISSUANCES**

No.	Drawing Issue Description	Date
1	DESIGN DEVELOPMENT	3/18/20

FTE - 450  
EXISTING IU - 38  
PROPOSED IU - 33

**BARACK & MICHELLE OBAMA ACADEMY**



970 Martin St SE, Atlanta, GA 30315

**ATLANTA PUBLIC SCHOOL**

**ELECTRICAL PARTIAL POWER PLAN  
UPPER LEVEL AREA A**

ROBERT JUST	2/19/2019
Principal/Designer	Project No.
S. TARKHAN	02/25/20
Project Manager	Date
B. FERREN	
Project Architect	
E. SAADAT	
Staff Architect	
B. FERREN / J. KLEIN	
Interior Design	

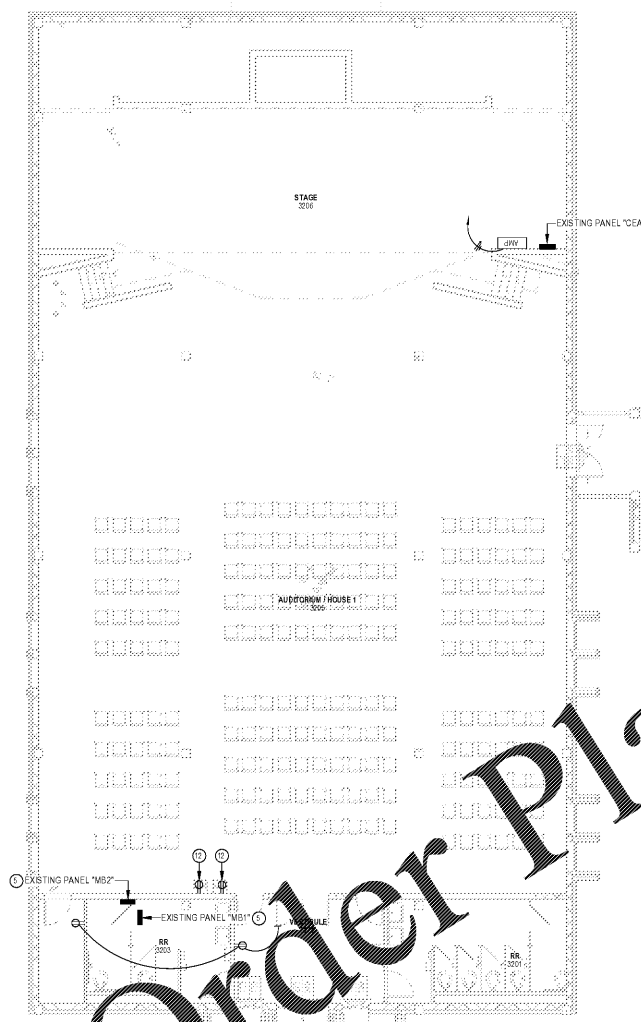
**E4.21**

NOT ISSUED FOR CONSTRUCTION

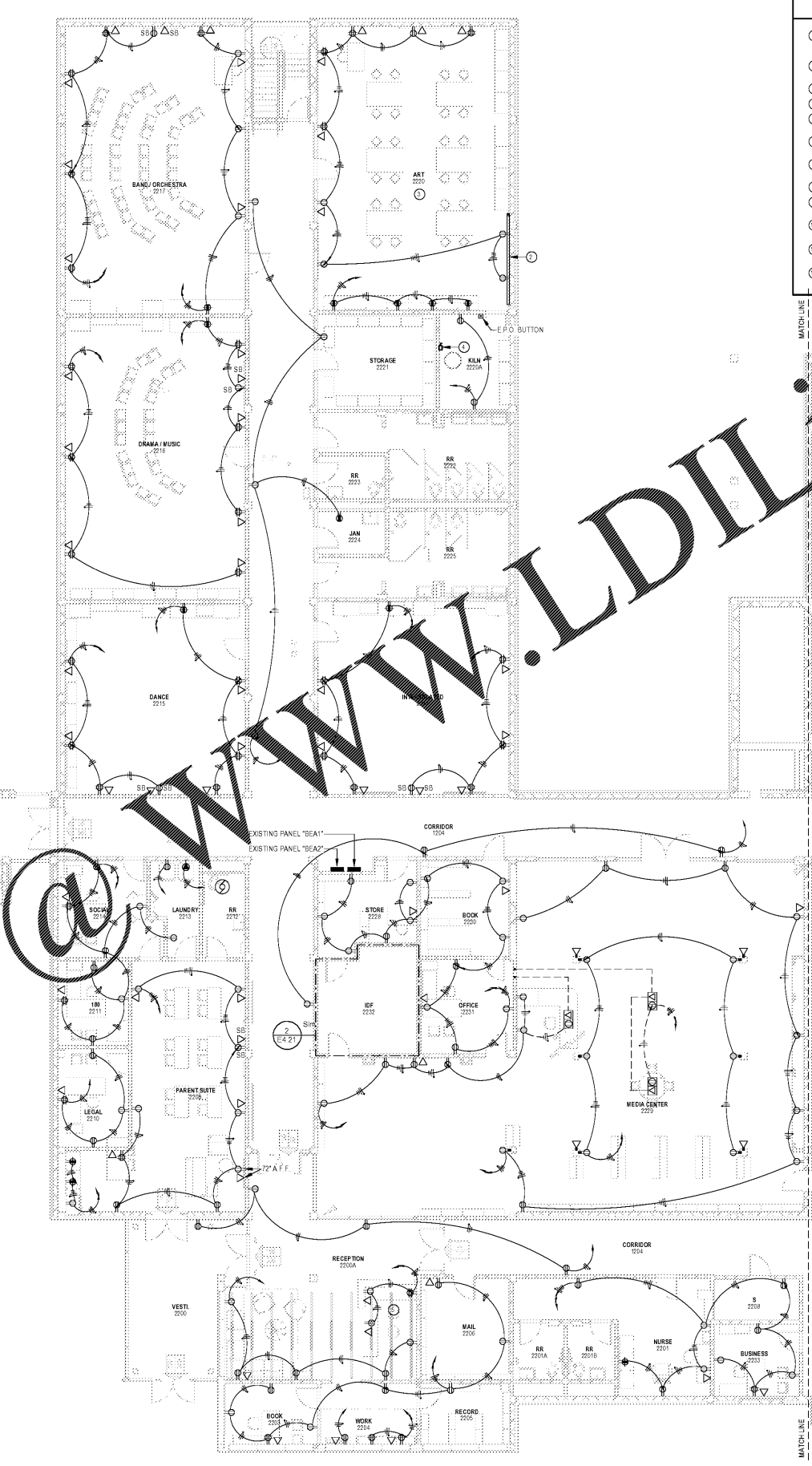
**DRAWING NOTES**

- EXISTING PANEL TO BE RELOCATED. EXTEND AND RECONNECT ALL CIRCUITING AND FEEDER TO NEW LOCATION. PROVIDE NEW FRONT PANEL COVER FOR SURFACE MOUNT INSTALLATION. PROVIDE SHEET METAL FRONT COVER FOR EXISTING PANEL LOCATION.
- NEW TWO-PIECE SURFACE METAL RACEWAY WITH VERTICAL RISER INTO CEILING SPACE. SUBMIT WALL ELEVATIONS TO ARCHITECT FOR APPROVAL PRIOR TO ROUGH-IN.
- ALL EXISTING RECEPTACLES IN THIS ROOM ARE TO REMAIN. MAINTAIN ALL EXISTING CIRCUITING.
- EXTEND AND RECONNECT EXISTING KILN CIRCUIT TO NEW LOCATION.
- COORDINATE WIRING DEVICE INSTALLATION IN CASEWORK WITH ARCHITECTURAL DETAILS AND CASEWORK SHOP DRAWINGS PRIOR TO ROUGH-IN.
- COORDINATE LOCATIONS OF ALL ELECTRICAL DEVICES WITHIN MDF AND DF ROOMS WITH A.P.S. IT DEPARTMENT PRIOR TO ROUGH-IN.
- FLOOR TO CEILING, 3/4" THICK, GRADE AND PLYWOOD BACKBOARD. PAINT WITH (2) COATS OF FIRE RESISTANT GRAY PAINT.
- DEDICATED DOUBLE DUPLEX (QJAD) RECEPTACLE MOUNTED TO TOP OF RACK.
- NEMA LE-3SR, 30-AMP, TWIST-LOCK, 120 VOLT RECEPTACLE FOR RACK MOUNTED UPS. MOUNT AT BOTTOM OF RACK BETWEEN RACKS #1 AND #2.
- NEMA LE-3SR, 30-AMP, TWIST-LOCK, 208 VOLT RECEPTACLE FOR RACK MOUNTED UPS. MOUNT AT BOTTOM OF RACK BETWEEN RACKS #1 AND #2 AND ABOVE NEMAS-3SR OUTLET.
- TELECOMMUNICATIONS GROUND BUSBAR (T.G.B.B.) RUN #6 BARE COPPER W/2 TO MEDIA CENTER ROOM.
- REPLACE EXISTING DRINKING FOUNTAIN CIRCUIT BREAKER WITH NEW 150A CIRCUIT BREAKER. MATCH EXISTING A.C. RATINGS AND AMPERAGE.

**2 ELECTRICAL ENLARGED POWER PLAN - IDF 2232**  
1/4" = 1'-0"



**1 ELECTRICAL PARTIAL POWER PLAN - LEVEL 2 - AREA A**  
1/8" = 1'-0"



**Order Plans**

**WWW.LDILine.com**

PROJECT NUMBER: 20190108 PROJECT NAME: BARACK & MICHELLE OBAMA ACADEMY  
SHEET NUMBER: E4.21 - ELECTRICAL PARTIAL POWER PLAN UPPER LEVEL AREA A  
C:\Egnyte\Shared\Drawings\9000's\9040 - BMO School\Electrical\9040 - BMO Academy - Electrical (R19).rvt  
3/16/2020 4:23:07 PM