



**SCOPE DOCUMENTS**

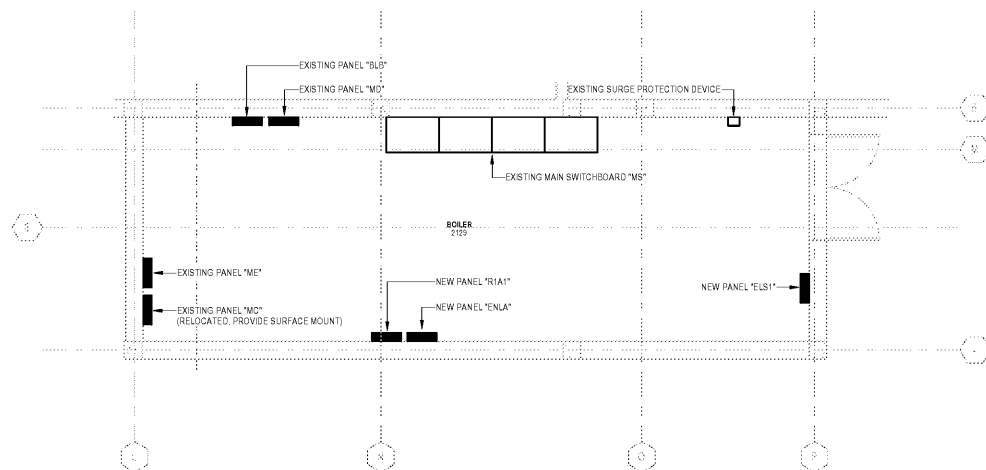
The Contract Documents issued for [Conceptual Design, Schematic Design, Design Development, Partial Construction Documents or Other Issuance up to Issued for Construction] are intended to be at that level of development and as such, may be neither complete nor coordinated. The [Construction Manager, Contractor, Design/Builder] is responsible for complete and coordinated pricing [and execution] of the Work, and shall include items necessary for the proper execution and completion of the Work, as shown, specified, reasonably inferred or required for a complete Project. For Work of detached design, systems, assemblies, components and materials shall comply with national, state and local code requirements. The [Construction Manager, Contractor, Design/Builder] shall inform the Owner and Architect, in timely fashion, of any discovered omissions, inconsistencies or errors in the Contract Documents.

**ISSUANCES**

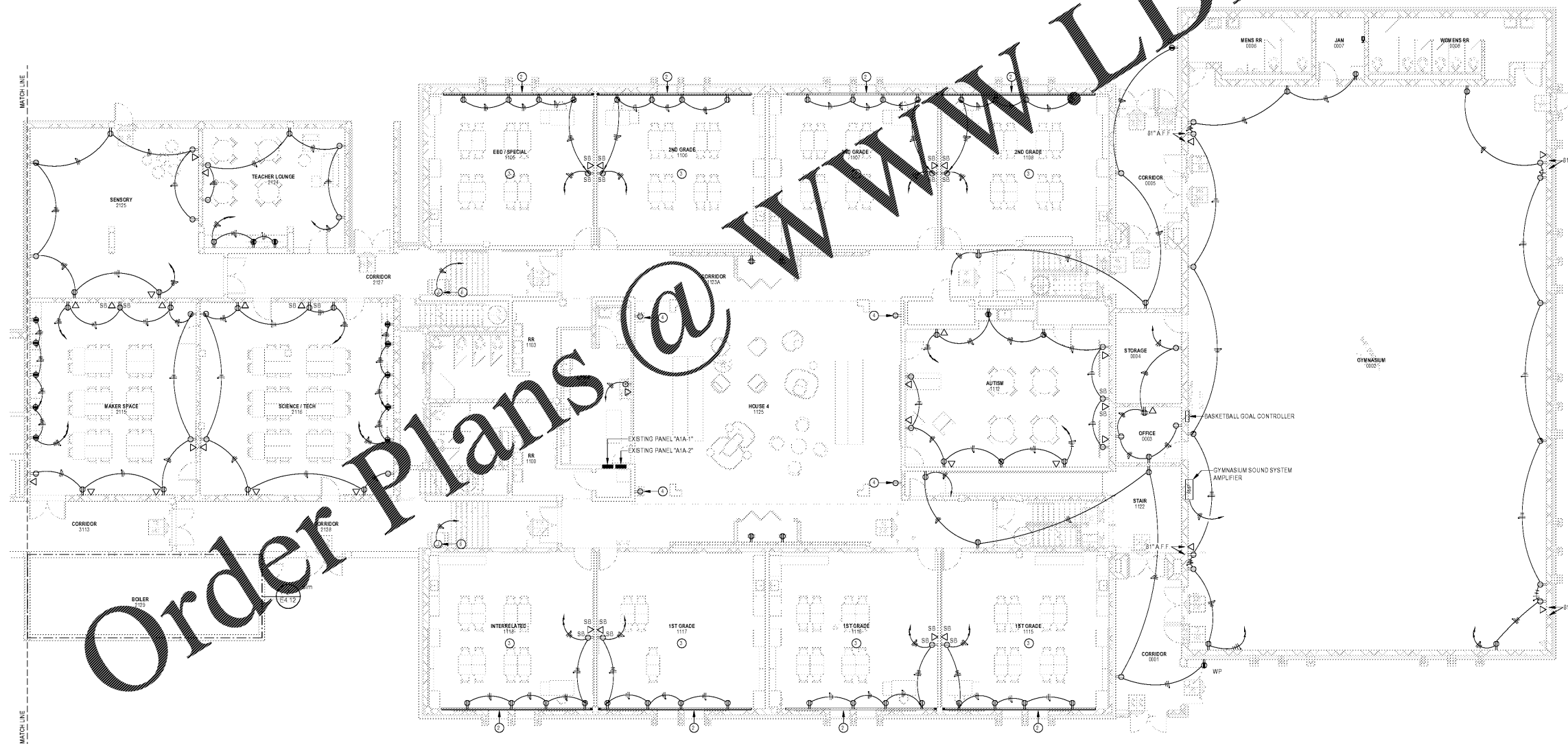
No.	Drawing Issue Description	Date
1	DESIGN DEVELOPMENT	3/18/20

**DRAWING NOTES**

- 1 EXISTING PANEL TO BE RELOCATED. EXTEND AND RECONNECT ALL CIRCUITING AND FEEDER TO NEW LOCATION. PROVIDE NEW FRONT PANEL COVER FOR SURFACE MOUNT INSTALLATION. PROVIDE SHEET METAL FRONT COVER FOR EXISTING PANEL LOCATION.
- 2 NEW TWO-PIECE SURFACE METAL RACEWAY WITH VERTICAL RISER INTO CEILING SPACE. SUBMIT WALL ELEVATIONS TO ARCHITECT FOR APPROVAL PRIOR TO ROUGH-IN.
- 3 ALL EXISTING RECEPTACLES IN THIS ROOM ARE TO REMAIN. MAINTAIN ALL EXISTING CIRCUITING.
- 4 REPLACE EXISTING DRINKING FOUNTAIN CIRCUIT BREAKER WITH NEW GFCI CIRCUIT BREAKER. MATCH EXISTING A.I.C. RATINGS AND AMPERAGE.
- 5 PROVIDE 120 VOLT POWER TO ELECTRIC CHAIR LIFT AND ALL CONTROL CONDUIT. REFER TO MANUFACTURER'S APPROVED SHOP DRAWINGS PRIOR TO ROUGH-IN.



2 ELECTRICAL ENLARGED POWER PLAN - BOILER 2129  
1/4" = 1'-0"



1 ELECTRICAL PARTIAL POWER PLAN - LEVEL 1 - AREA B  
1/8" = 1'-0"

Order Plans @ [www.LDILine.com](http://www.LDILine.com)

PROJECT NUMBER: 20190109 PROJECT NAME: BARACK & MICHELLE OBAMA ACADEMY  
SHEET NUMBER: E4.12 ELECTRICAL PARTIAL POWER PLAN LOWER LEVEL AREA B  
C:\E\myte\Shared\Drawings\9000's\9040 - BMO School\Electrical\9040 - BMO Academy - Electrical (R19).rvt  
3/16/2020 4:22:39 PM

FTE - 450  
EXISTING IU - 38  
PROPOSED IU - 33

**BARACK & MICHELLE OBAMA ACADEMY**



970 Martin St SE, Atlanta, GA 30315

ATLANTA PUBLIC SCHOOL

ELECTRICAL PARTIAL POWER PLAN  
LOWER LEVEL AREA B

ROBERT JUST	20190109
Principal/Owner	Project No.
S. TARKHAN	02/25/20
Project Manager	Date
B. FERREN	
Project Architect	
E. SAADAT	
Staff Architect	
B. FERREN, J. KLEIN	
Interior Design	

E4.12