



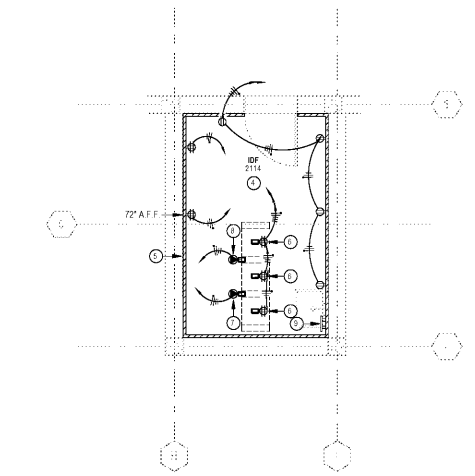
SCOPE DOCUMENTS

The Contract Documents Issued for [Conceptual Design, Schematic Design, Design Development, Partial Construction Documents or Other Issuance up to Issued for Construction] are intended to be at that level of development and as such, may be neither complete nor coordinated. The [Construction Manager, Contractor, Design/Builder] is responsible for complete and coordinated pricing [and execution] of the Work, and shall include items necessary for the proper execution and completion of the Work, as shown, specified, reasonably inferred or required for a complete Project. For Work of designated design, systems, assemblies, components and materials shall comply with national, state and local code requirements. The [Construction Manager, Contractor, Design/Builder] shall inform the Owner and Architect, in timely fashion, of any discovered omissions, inaccuracies or errors in the Contract Documents.

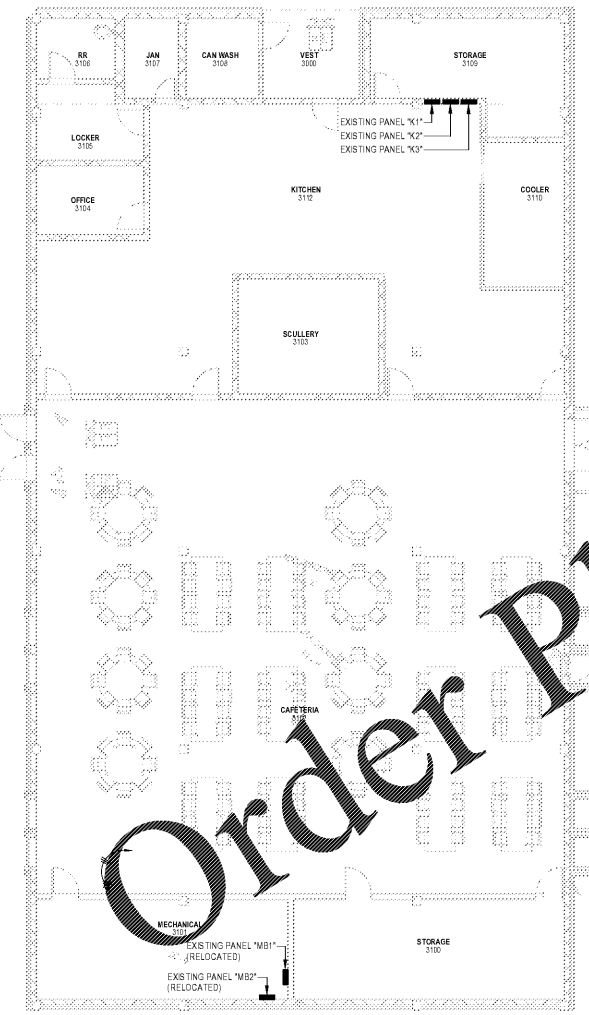
ISSUANCES		
No.	Drawing Issue Description	Date
1	DESIGN DEVELOPMENT	3/18/20

DRAWING NOTES

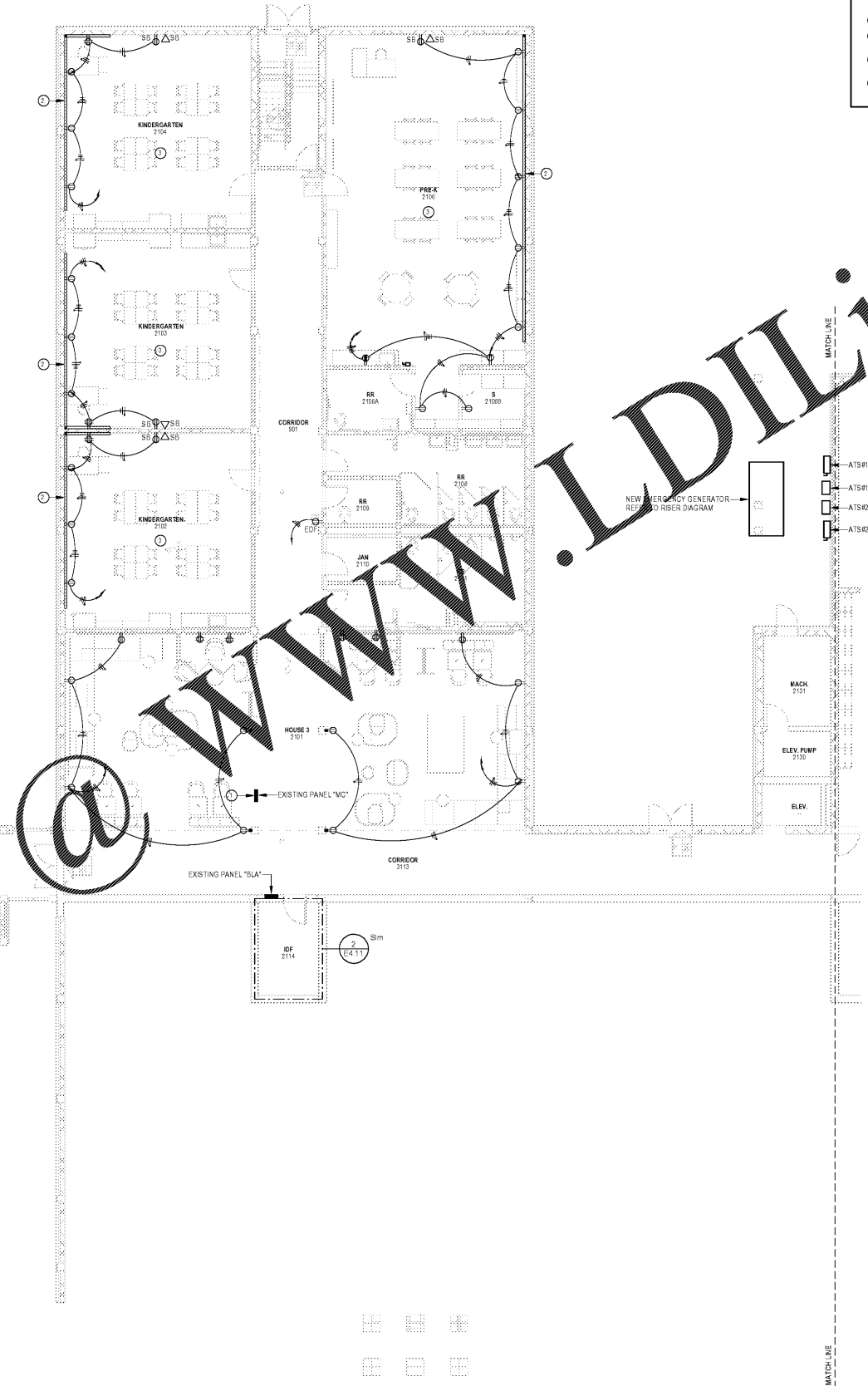
- ① EXISTING PANEL TO BE RELOCATED. EXTEND AND RECONNECT ALL CIRCUITING AND FEEDER TO NEW LOCATION. PROVIDE NEW FRONT PANEL COVER FOR SURFACE MOUNT INSTALLATION. PROVIDE SHEET METAL FRONT COVER FOR EXISTING PANEL LOCATION.
- ② NEW TWO-PIECE SURFACE METAL RACKWAY WITH VERTICAL RISER INTO CEILING SPACE. SUBMIT WALL ELEVATIONS TO ARCHITECT FOR APPROVAL PRIOR TO ROUGH-IN.
- ③ ALL EXISTING RECEPTACLES IN THIS ROOM ARE TO REMAIN. MAINTAIN ALL EXISTING CIRCUITING.
- ④ COORDINATE LOCATIONS OF ALL ELECTRICAL DEVICES WITH IN MDF AND IDF ROOMS WITH A.P.S. IT DEPARTMENT PRIOR TO ROUGH-IN.
- ⑤ FLOOR TO CEILING, 3/4" THICK, GRADE A0 PLYWOOD BACKBOARD. PAINT WITH (2) COATS OF FIRE RESISTANT GRAY PAINT.
- ⑥ DEDICATED DOUBLE DUPLEX (QUAD) RECEPTACLE MOUNTED TO TOP OF RACK.
- ⑦ NEMA L5-30R, 25-AMP, TWIST-LOCK, 120-VOLT RECEPTACLE FOR RACK MOUNTED UPS. MOUNT AT BOTTOM OF RACK BETWEEN RACKS #1 AND #2.
- ⑧ NEMA L6-30R, 25-AMP, TWIST-LOCK, 208-VOLT RECEPTACLE FOR RACK MOUNTED UPS. MOUNT AT BOTTOM OF RACK BETWEEN RACKS #1 AND #2 ABOVE NEMA-30R OUTLET.
- ⑨ TELECOMMUNICATIONS GROUND BUSBAR (T.O.B.B.). RUN W/ BARE COPPER GROUND TO MDF ROOM.



② ELECTRICAL ENLARGED POWER PLAN - IDF 2114
1/4" = 1'-0"



① ELECTRICAL PARTIAL POWER PLAN - LEVEL 1 - AREA A
1/8" = 1'-0"



- ATIS#1 DISCONNECT
- ATIS#1 (NEMA 3R)
- ATIS#2 (NEMA 3R)
- ATIS#2 DISCONNECT

Order Plans

WWW.LDILine.com

PROJECT NUMBER: 20190109 PROJECT NAME: BARACK & MICHELLE OBAMA ACADEMY
SHEET NUMBER: E4.11 - ELECTRICAL PARTIAL POWER PLAN LOWER LEVEL AREA A
C:\Egnyte\Shared\Drawings\9000s\9040 - BMO Academy\Electrical\R19\nt
3/16/2020 4:22:26 PM

FTE - 450
EXISTING IU - 38
PROPOSED IU - 33

BARACK & MICHELLE OBAMA ACADEMY



970 Martin St SE, Atlanta, GA 30315

ATLANTA PUBLIC SCHOOL

ELECTRICAL PARTIAL POWER PLAN
LOWER LEVEL AREA A

ROBERT JUST	20190109
Principal/Owner	Project No.
S. TARKHAN	02/20/20
Project Manager	Date
B. FERREN	
Project Architect	
E. SAADAT	
Staff Architect	
B. FERREN / J. KLEIN	
Interior Design	

E4.11