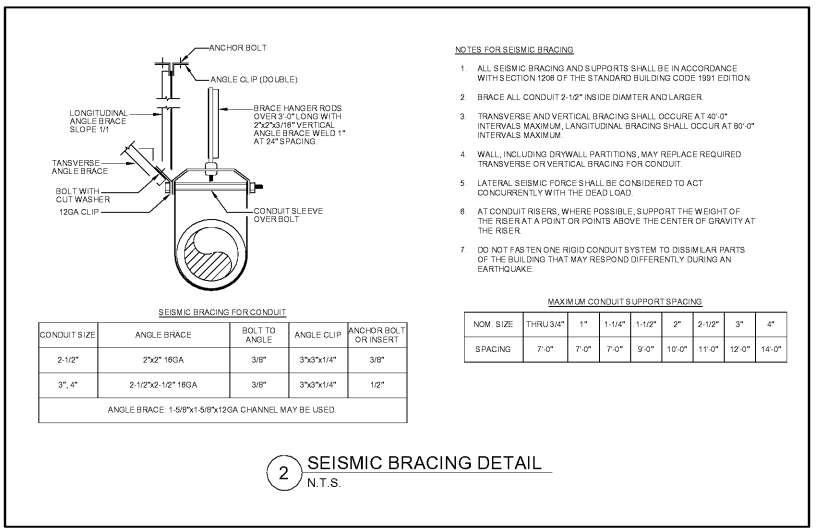
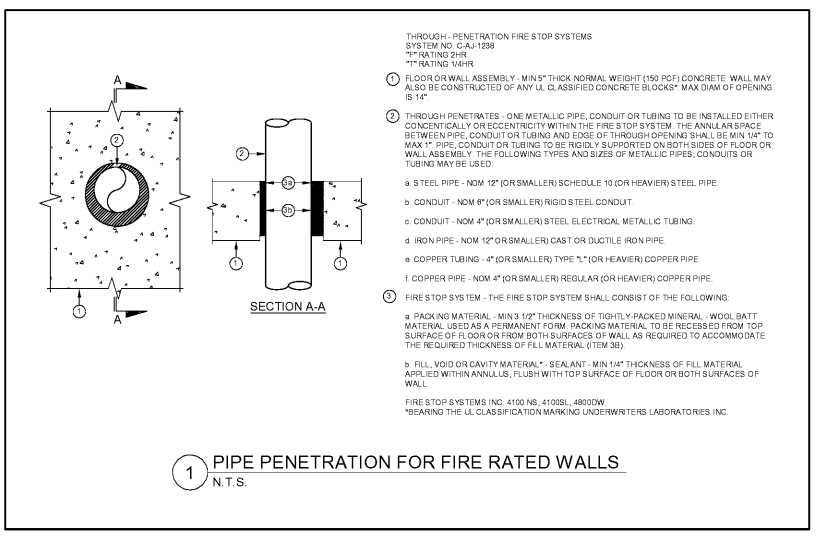




SCOPE DOCUMENTS
The Contract Documents issued for Conceptual Design, Schematic Design, Design Development, Partial Construction Documents or Other Issuance up to Issued for Construction are intended to be at that level of development and as such, may not reflect complete or coordinated. The [Contractor/Manager, Contractor, Design/Builder] is responsible for complete and coordinated pricing [and execution] of the Work, and shall include items necessary for the proper execution and completion of the Work, as shown, specified, reasonably inferred or required for a complete Project. For Work of designed design, systems, assemblies, components and materials shall comply with national, state and local code requirements. The [Contractor/Manager, Contractor, Design/Builder] shall inform the Owner and Architect, in timely fashion, of any discovered omissions, omissions, inaccuracies or errors in the Contract Documents.

ISSUANCES

No.	Drawing Issue Description	Date
1	DESIGN DEVELOPMENT	3/19/20



COMPLETION DOCUMENTS

DRAWINGS
WITHIN 30 DAYS AFTER THE DATE OF SYSTEM ACCEPTANCE BY THE CONTRACTOR, 3 COPIES OF RECORD AS-BUILT DRAWINGS OF THE ACTUAL INSTALLATION SHALL BE PROVIDED TO THE BUILDING OWNER, INCLUDING THE FOLLOWING:
A. A SINGLE LINE DIAGRAM OF THE BUILDING ELECTRICAL DISTRIBUTION SYSTEM
B. FLOOR PLANS INDICATING LOCATION AND AREA SERVED FOR ALL DISTRIBUTION
MANUALS
WITHIN 30 DAYS AFTER THE DATE OF SYSTEM ACCEPTANCE, 3 COPIES OF OPERATING AND MAINTENANCE MANUALS SHALL BE PROVIDED TO THE BUILDING OWNER BY THE CONTRACTOR. THE MANUALS SHALL INCLUDE, AT A MINIMUM, THE FOLLOWING:
A. SUBMITTAL DATA STATING EQUIPMENT RATING AND SELECTED OPTIONS FOR EACH PIECE OF EQUIPMENT REQUIRING MAINTENANCE.
B. OPERATIONS MANUALS AND MAINTENANCE MANUALS FOR EACH PIECE OF EQUIPMENT REQUIRING MAINTENANCE. REQUIRED ROUTINE MAINTENANCE ACTIONS SHALL BE CLEARLY IDENTIFIED.
C. NAMES AND ADDRESSES OF AT LEAST ONE QUALIFIED SERVICE AGENCY.
D. A COMPLETE NARRATIVE OF HOW EACH SYSTEM IS INTENDED TO OPERATE

ELECTRICAL GENERAL NOTES

- THE CONTRACTOR SHALL VISIT THE SITE OF THE PROPOSED PROJECT TO INSPECT THE EXISTING CONDITIONS AND DETERMINE THE SCOPE OF HIS WORK AND THE EXTENT OF DEMOLITION. THE SITE INSPECTION SHALL BE MADE PRIOR TO SUBMITTING BID FOR THE PROPOSED PROJECT. NO COMPENSATION WILL BE ALLOWED FOR FAILURE TO INSPECT THE SITE. CONTRACTOR SHALL INFORM ARCHITECT PRIOR TO BID OF ANY DISCREPANCIES WHICH EXIST BETWEEN DRAWINGS AND ACTUAL FIELD CONDITIONS
- REFER TO ARCHITECTURAL REFLECTED CEILING PLAN FOR EXACT LOCATION OF ALL LIGHT FIXTURES
- FINAL WIRING OF ALL ADJUSTABLE LIGHT FIXTURES TO BE AS DIRECTED BY ARCHITECT
- REFER TO RISER DIAGRAM FOR FEEDER SIZES FOR PANELBOARDS
- OVERCURRENT PROTECTION, WIRE SIZE AND NUMBER OF CONNECTION POINTS FOR MECHANICAL HVAC EQUIPMENT IS FOR ITEMS AS SPECIFIED. COORDINATE WITH MECHANICAL CONTRACTOR AND MAKE NECESSARY CHANGES PRIOR TO INSTALLATION FOR ACTUAL EQUIPMENT FURNISHED AT NO COST TO OWNER. REFER TO MECHANICAL DRAWINGS FOR EXACT LOCATION OF MECHANICAL EQUIPMENT. REFER TO HVAC ELECTRICAL SCHEDULE FOR WIRING DATA ON SPECIFIED EQUIPMENT
- CONTRACTOR SHALL COORDINATE INSTALLATION OF LIGHTING FIXTURES, RECEPTACLES, PANELBOARDS, ETC. WITH STRUCTURE, PIPING, ETC. AND MAKE ADJUSTMENTS AS REQUIRED
- CONTRACTOR SHALL PROVIDE ROUGH-IN AND MAKE FINAL CONNECTIONS OF ALL KITCHEN EQUIPMENT IN ACCORDANCE WITH KITCHEN DRAWINGS
- ALL JUNCTION BOXES AND COVER PLATES SHALL BE PAINTED AND LABELED. REFER TO DETAIL ON DRAWINGS
- ALL RECEPTACLES WITHIN 6 FEET OF PLUMBING FIXTURES SHALL BE PROVIDED WITH 5 MILL AMP GROUND-FALL INTERRUPTERS
- CONFIRM MOUNTING HEIGHTS AND COORDINATE LOCATION OF ALL OUTLETS, SWITCHES AND OTHER DEVICES WITH ARCHITECTURAL DRAWINGS PRIOR TO ROUGH-IN
- PROVIDE SEAL FOR PENETRATION OF FIRE RATED WALLS BY CONDUIT
- BACK TO BACK RECEPTACLES IN WALL ONE HOUR FIRE RATED WALLS SHALL BE LOCATED A MINIMUM OF 24" ON CENTER
- ALL WIRING SHALL BE IN METAL CONDUIT EXCEPT IN LOW VOLTAGE SYSTEM. FIRE ALARM SYSTEM SHALL BE INSTALLED IN EMT CONDUIT, ALL OTHER LOW VOLTAGE CABLING SHALL BE INSTALLED IN CABLE TRAY
- TERMINATIONS (LUGS, TERMINAL BLOCKS, ETC.) IN CIRCUIT BREAKERS, DISCONNECT SWITCHES, LIGHTING CONTROLS, RELAYS, PANELBOARDS, TIME SWITCHES, ETC. SHALL BE RATED FOR 75°C IN TEMPERATURE. IF TERMINATIONS IN EQUIPMENT SUCH AS EXHAUST FANS, WATER HEATERS, AIR CONDITIONING UNITS, ETC. ARE RATED FOR 80°C ONLY, THEN CONDUCTORS MUST BE DERATED AND USED IN COMPLIANCE WITH TABLE 310.16 OF CURRENT N.E.C. AND SIZED FOR THE 80°C COLUMN
- PROVIDE LABELING PER N.E.C. ARTICLE 110.18 FOR ARC-FLASH PROTECTION. PROVIDE LABELS ON ALL SWITCHBOARDS AND PANELBOARDS. ENGINEER WILL PROVIDE INFORMATION FOR LABELING INCLUDING FLASH PROTECTION BOUNDARY AND PERSONAL PROTECTIVE EQUIPMENT (PPE)
- ELECTRICAL CONTRACTOR SHALL VERIFY THE EXACT ELECTRICAL REQUIREMENTS OF ALL MECHANICAL AND PLUMBING EQUIPMENT WITH THE MECHANICAL AND PLUMBING CONTRACTORS PRIOR TO PURCHASING EQUIPMENT. VERIFY THE ELECTRICAL REQUIREMENTS WITH THE EQUIPMENT FURNISHED (NAME PLATE INFORMATION) AND MAKE CORRECTIONS AS REQUIRED AT NO ADDITIONAL COST TO THE OWNER. COORDINATE EQUIPMENT LOCATIONS WITH MECHANICAL/PLUMBING DRAWINGS AND CONTRACTORS PRIOR TO ROUGH-IN
- BRANCH CIRCUITING WIRES SHALL NOT PASS THROUGH ELECTRICAL PANELS, DISCONNECT SWITCHES, CONTRACTORS, ETC.) OTHER THAN THOSE DESIGNED FOR SUCH PROTECTION
- VERIFY LOCATION AND POWER REQUIREMENTS FOR ALL LAUNDRY EQUIPMENT. LAUNDRY EQUIPMENT INCLUDES BUT IS NOT LIMITED TO THE FOLLOWING: WASHER, DRYER
- ELECTRICAL CONTRACTOR SHALL PROVIDE EMPTY CONDUIT AND PROTECTION BOX FOR ALL SENSORS/THERMOSTATS AS INDICATED ON MECHANICAL PLANS. COORDINATE EXACT LOCATION AND BOX SIZES PRIOR TO ROUGH-IN
- PROVIDE SCALED DRAWINGS WITH ALL ELECTRICAL CONNECTIONS WITH MECHANICAL EQUIPMENT FURNISHED FOR ENGINEER REVIEW. PROVIDE NECESSARY BRACING FOR PER THE NATIONAL ELECTRICAL CODE
- COORDINATE ALL LIGHTING CONTROL SENSORS LOCATIONS AND MAKE NECESSARY ADJUSTMENTS PER MANUFACTURER'S RECOMMENDATIONS. FIELD CONDITIONS CONTRACTOR SHALL COORDINATE WITH ARCHITECT A POST-ROUGH-IN ADJUST ALL LIGHTING SENSORS
- PROVIDE NECESSARY POWER PACKS FOR MOTION DETECTOR CONTROLS AS REQUIRED. COORDINATE WITH ARCHITECT FOR MOTION DETECTOR CONTROLS. PROVIDE PHOTOGRAPHIC EVIDENCE OF MOTION SENSOR CONTROLS. PROVIDE PHOTOGRAPHIC EVIDENCE OF MOTION SENSOR CONTROLS. PROVIDE PHOTOGRAPHIC EVIDENCE OF MOTION SENSOR CONTROLS.
- CONTRACTOR SHALL INSURE THAT ALL WORKING CLEARANCES PER THE N.E.C. ARE MET OR EXCEEDED UNLESS OTHERWISE SPECIFIED PRIOR TO ROUGH-IN
- CONDUIT SHALL BE INSTALLED IN METAL CONDUIT. CONDUIT SHALL NOT BE SMALLER THAN NO. 12 AND WHERE CIRCUIT LENGTH EXCEEDS 110' IN LENGTH FROM SOURCE (PANEL) TO THE LAST DEVICE ON THE CIRCUIT EXCEEDS 110' IN LENGTH, CONDUCTORS SHALL BE NO. 10 MINIMUM AND FOR THE ENTIRE LENGTH OF THE CIRCUIT FOR ALL 120V IN LENGTH THE CONDUCTOR SHALL BE NO. 8 MINIMUM AND FOR THE ENTIRE LENGTH OF THE CIRCUIT
- CONTRACTOR SHALL COORDINATE INSTALLATION OF NEW LIGHTING FIXTURES, RECEPTACLES, PANELBOARDS, ETC. WITH STRUCTURE, PIPING, ETC. AND MAKE ADJUSTMENTS AS REQUIRED
- EXIT SIGNS AND ALL EMERGENCY LIGHTING SHALL BE WIRED AHEAD OF ANY SWITCHING OR CONTACTORS. DO NOT SWITCH EXIT SIGNS OR EMERGENCY NIGHT LIGHTS. CONTRACTOR SHALL PROVIDE AN UNSWITCHED HOT TO BY PASS ANY SWITCHING AND/OR CONTRACTORS FOR ALL SWITCHED EMERGENCY LIGHTING
- TAMPER RESISTANT RECEPTACLES SHALL BE PROVIDED IN ALL AREAS EXCEPT FOR ADMINISTRATION AND OFFICE AREAS PER N.E.C. 2017.408.12
- ALL EXISTING RECEPTACLES SHALL BE REPLACED WITH NEW TAMPER RESISTANT TYPE AND NEW STAINLESS STEEL COVER PLATES
- PROVIDE DEDICATED NEUTRALS FOR ALL CIRCUITS. DO NOT SHARE NEUTRALS
- PROVIDE SEISMIC BRACING PER THE INTERNATIONAL BUILDING CODE (IBC) 2012, CHAPTER 13

ELECTRICAL LEGEND

Symbol	Description
	HOME RUN TO PANELBOARD, LETTER INDICATES PANEL DESIGNATION, NUMBER INDICATES CIRCUIT NUMBER, SLASH MARK INDICATES NUMBER OF CONDUCTORS IN SIZE, CONDUIT AS REQUIRED BY THE N.E.C. NO. SLASH MARK INDICATES 2#12, 1#12G, 1#12G, 1#12G INDICATES GREEN GROUND CONDUCTOR
	CONDUIT CONCEALED IN CEILING OR WALL
	CONDUIT CONCEALED IN SLAB OR BELOW GRADE
	PANELBOARD, 120/208V, 3 PHASE, 4 WIRE. NEW OR EXISTING AS INDICATED
	CONTROLLER
	SELF-CONTAINED CIRCUIT BREAKER, PROVIDE NEMA ENCLOSURE AND CIRCUIT BREAKER SIZE AS INDICATED. COORDINATE LOCATIONS PRIOR TO ROUGH-IN
	HEAVY DUTY DISCONNECT SWITCH, "F" INDICATES FUSED, "WP" INDICATES NEMA 3R ENCLOSURE
	MOTOR, HORSEPOWER INDICATED
	LED TROFFER, TYPE INDICATED
	LED TROFFER, UNSWITCHED EMERGENCY, TYPE INDICATED
	LED TROFFER, UNSWITCHED EMERGENCY, TYPE INDICATED
	LED ENCLOSED STRIP FIXTURE, TYPE INDICATED
	LED ENCLOSED STRIP FIXTURE, UNSWITCHED NIGHT LIGHT, TYPE INDICATED
	LED DOWNLIGHT FIXTURE, TYPE INDICATED
	LED DOWNLIGHT FIXTURE, SWITCHED EMERGENCY, TYPE INDICATED
	LED DOWNLIGHT FIXTURE, SWITCHED EMERGENCY, TYPE INDICATED
	PENDANT FIXTURE, TYPE INDICATED
	WALL MOUNT, TYPE INDICATED, UNLESS NOTED OTHERWISE
	TOGGLE SWITCH, "2" INDICATES 2 POLE, "3" INDICATES 3 WAY, "4" INDICATES 4 WAY, "5" INDICATES 5 WAY, "M" INDICATES MANUAL, "MOTOR" INDICATES MOTOR CONTROLLER
	LIGHT SWITCH, LUTRON DIVA 0-10V SERIES, SIZED FOR LOAD AND LAMP TYPE
	WALL SWITCH/OCCUPANCY SENSOR, DUAL TECHNOLOGY, HUBBELL #LMTD-1-FINISH APPROVED EQUALS BY SENSOR SWITCH AND WATTS TOPPER
	0-10V DIMMING WALL SWITCH/OCCUPANCY SENSOR, PASSIVE INFRARED, HUBBELL #LHDS-3-FINISH, APPROVED EQUALS BY SENSOR SWITCH AND WATTS TOPPER
	DIGITAL TIMER SWITCH, HUBBELL #TDS0-FINISH, APPROVED EQUALS BY SENSOR SWITCH AND WATTS TOPPER
	CEILING MOUNTED, DUAL TECHNOLOGY OCCUPANCY SENSOR, HUBBELL #OMN-DT-500, PROVIDE POWER PACKS AS REQUIRED. APPROVED EQUALS BY SENSOR SWITCH AND WATTS TOPPER
	CEILING MOUNTED, DUAL TECHNOLOGY OCCUPANCY SENSOR, HUBBELL #OMN-DT-200, PROVIDE POWER PACKS AS REQUIRED. APPROVED EQUALS BY SENSOR SWITCH AND WATTS TOPPER
	WALL MOUNTED, DUAL TECHNOLOGY OCCUPANCY SENSOR, HUBBELL #LW-DT, PROVIDE POWER PACKS AS REQUIRED. APPROVED EQUALS BY SENSOR SWITCH AND WATTS TOPPER
	EMERGENCY LIGHTING CONTROL RELAY WITH 0-10V DIMMING FULL ON, HUBBELL #LW524EPC10-UNV, REFER TO DETAIL 2E-311
	EMERGENCY LIGHTING CONTROL RELAY, HUBBELL #LW524EPC1-UNV, REFER TO DETAIL 2E-311
	DUPLEX RECEPTACLE, MOUNT AT 18" AFF UNLESS NOTED OTHERWISE
	DUPLEX RECEPTACLE, ABOVE COUNTER TOP, MOUNT AT 44" AFF UNLESS NOTED OTHERWISE
	DOUBLE DUPLEX RECEPTACLE, MOUNT AT 18" AFF UNLESS NOTED OTHERWISE
	DUPLEX RECEPTACLE, GROUND FULTY INTERRUPTER, MOUNT AT 44" AFF UNLESS NOTED OTHERWISE
	DUPLEX RECEPTACLE, GROUND FULTY INTERRUPTER, MOUNT AT 18" AFF UNLESS NOTED OTHERWISE. "WP" INDICATES NEMA 3R WITH THERMO-PROOF ENCLOSURE WITH "N" LIST COVER
	DUPLEX RECEPTACLE FOR ELECTRICAL DRINKING FOUNTAIN, MOUNT AT 18" AFF UNLESS NOTED OTHERWISE. PROVIDE GFI TYPE CIRCUIT BREAKER IN PANEL
	SPECIAL OUTLET, COORDINATE WITH EQUIPMENT FURNISHED. MOUNT AT 18" AFF UNLESS NOTED OTHERWISE
	FLUSH MOUNT FLOOR BOX, WIREMOLD "RFR2" SERIES WITH (1) DUPLEX RECEPTACLE. PROVIDE #8-C-TC-FINISH TRIM WITH INSERT TO MATCH FLOORING TYPE
	FLUSH MOUNT FLOOR BOX, WIREMOLD "RFR2" SERIES WITH (1) DUPLEX RECEPTACLE AND (1) COMMUNICATIONS OUTLET. PROVIDE (1) CAT 6, 4 PAIR UTP CABLE AND TERMINATE IN MDF OR IDF RACK BOXES. # INDICATES QUANTITY OF CABLES AND JACKS IF MORE THAN ONE ARE REQUIRED. PROVIDE #8-C-TC-FINISH TRIM WITH INSERT TO MATCH FLOORING TYPE
	JUNCTION BOX
	COMMUNICATIONS OUTLET, PROVIDE 4"x4"x3" DEEP RECESSED JUNCTION BOX WITH RECESSED JUNCTION BOX WITH SINGLE GANG PLASTER RING. STUP UP 3/4" E.C. WITH PULL WIRE INTO CONDUIT/HOOK SYSTEM. PROVIDE BUSHINGS
	NETWORK CONNECTION TO A.P.S. PROVIDED PRE-WIRED FURNITURE. PROVIDE AND INSTALL (1) CAT 6, 4 PAIR UTP CABLE, JACK AND FACEPLATE. COORDINATE ALL REQUIREMENTS WITH A.P.S. PRIOR TO ROUGH-IN. CABLING TO BE INSTALLED THROUGH FURNITURE POWER POLE OR WALL FEED. PROVIDE FLEXIBLE FURNITURE SHIP-SIZES FOR CABLE QUANTITY FOR ALL WALL APPLICATIONS

PROJECT NUMBER: 20190108 PROJECT NAME: BARACK & MICHELLE OBAMA ACADEMY
SHEET NUMBER: E1.01 - ELECTRICAL LEGEND, NOTES AND DETAILS
C:\E\myte\Shared\Drawings\98000\98040 - BMO School\Electrical\8040 - Electrical (R19).prt
3/16/2020 4:20:36 PM

Order Plans @

FTE - 450
EXISTING IU - 38
PROPOSED IU - 33

BARACK & MICHELLE OBAMA ACADEMY



970 Martin St SE, Atlanta, GA 30315

ATLANTA PUBLIC SCHOOL

ELECTRICAL LEGEND, NOTES AND DETAILS

Name	Date
ROBERT JUST	20190109
Principal/Design	
S. TARKHAN	03/06/20
Project Manager	
B. FERREN	
Project Architect	
E. SAADAT	
Staff Architect	
B. FERREN / J. KLEIN	
Interior Design	

E1.01