



COOPER CARRY
THE CENTER FOR CONNECTIVE ARCHITECTURE

191 Peachtree Street NE
Suite 2400
Atlanta, GA 30303-1770
(404) 237-2000
coopercarry.com

GENERAL NOTES

1. SEE SHEET M1-00 FOR HVAC GENERAL NOTES

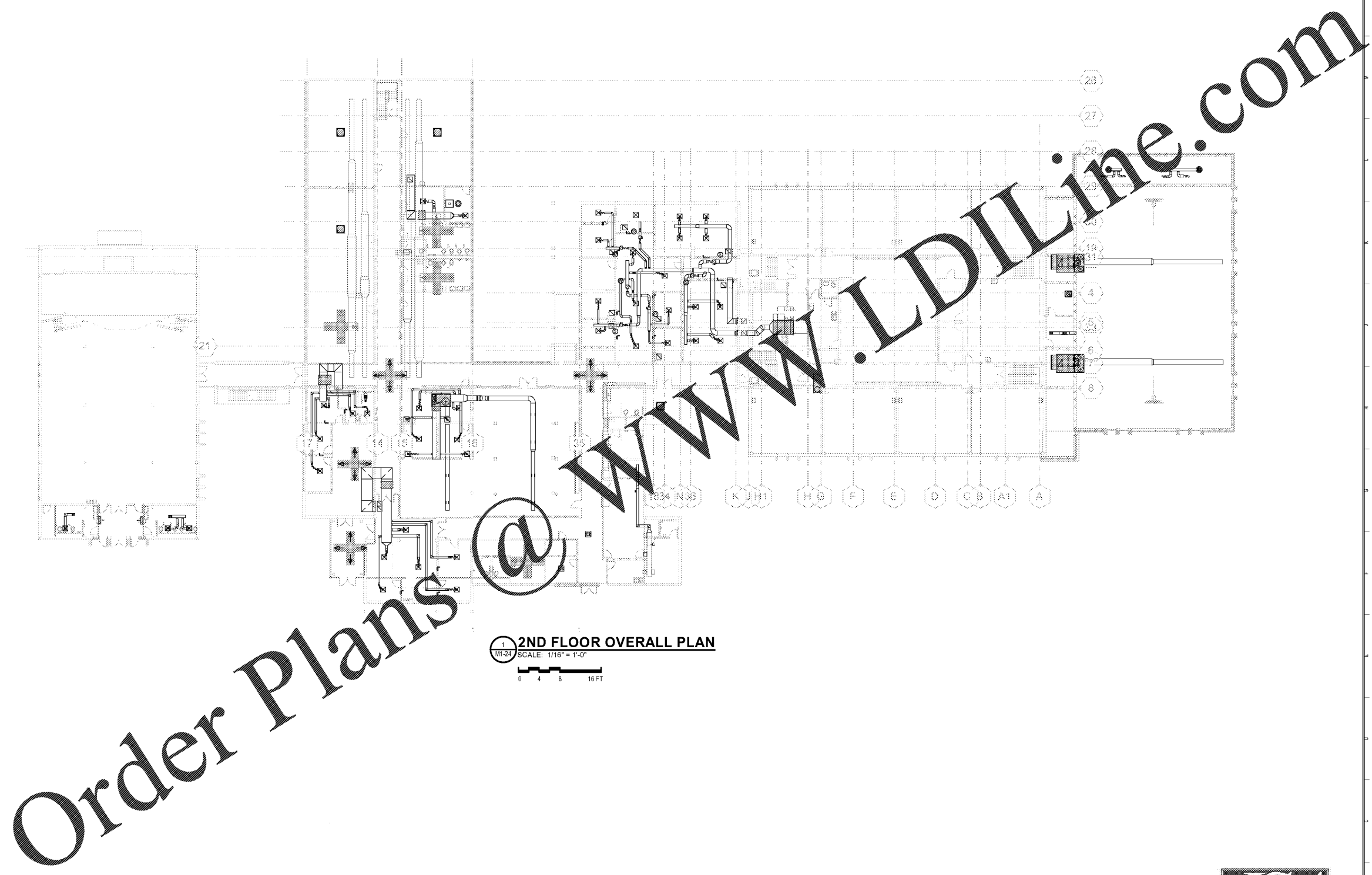
KEY NOTES

○

©2018 COOPER CARRY

SCOPE DOCUMENTS
The Contract Documents Issued for [Conceptual Design, Schematic Design, Design Development, Partial Construction Documents or Other Issuance up to Issued for Construction] are intended to be at that level of development and as such, may be neither complete nor coordinated. The [Construction Manager, Contractor, Design/Builder] is responsible for complete and coordinated pricing [and execution] of the Work, and shall include items necessary for the proper execution and completion of the Work, as shown, specified, reasonably inferred or required for a complete Project. For Work of designated design, systems, assemblies, components and materials shall comply with national, state and local code requirements. The [Construction Manager, Contractor, Design/Builder] shall inform the Owner and Architect, in timely fashion, of any discovered omissions, inconsistencies or errors in the Contract Documents.

ISSUANCES		
No.	Drawing Issue Description	Date



2ND FLOOR OVERALL PLAN
SCALE: 1/16" = 1'-0"
0 4 8 16 FT

Order Plans @

PROJECT NUMBER: CC # 201715 - JSA # 19J543 PROJECT NAME: BARACK & MICHELLE OBAMA ACADEMY
SHEET NUMBER: M1-24 - 2ND FLOOR HVAC PLAN - OVERALL
C:\Users\gmark\Documents\19J543 BarMO Academy_gmark\jsace.com.rvt
3/16/2020 5:13:54 PM

FTE - 450
EXISTING IU - 38
PROPOSED IU - 33

BARACK & MICHELLE OBAMA ACADEMY



970 Martin St SE, Atlanta, GA 30315
ATLANTA PUBLIC SCHOOLS

2ND FLOOR HVAC PLAN - OVERALL



Johnson, Spellman & Associates, Inc.
350 Research Court, Suite 130
Peachtree Corners, GA 30092
770-447-3555 www.jsa-inc.com

THW	CC # 201715 - JSA # 19J543
Principal Charge	Project No.
SPB	031620
Project Manager	Date
SPB	
Drawn By	

M1-24