



**SCOPE DOCUMENTS**  
The Contract Documents Issued for [Conceptual Design, Schematic Design, Design Development, Partial Construction Documents or Other Issuance up to Issued for Construction] are intended to be at that level of development and as such, may be neither complete nor coordinated. The [Construction Manager, Contractor, Design/Builder] is responsible for complete and coordinated pricing [and execution] of the Work, and shall include items necessary for the proper execution and completion of the Work, as shown, specified, reasonably inferred or required for a complete Project. For Work of obligated design, systems, assemblies, components and materials shall comply with national, state and local code requirements. The [Construction Manager, Contractor, Design/Builder] shall inform the Owner and Architect, in timely fashion, of any discovered omissions, inconsistencies or errors in the Contract Documents.

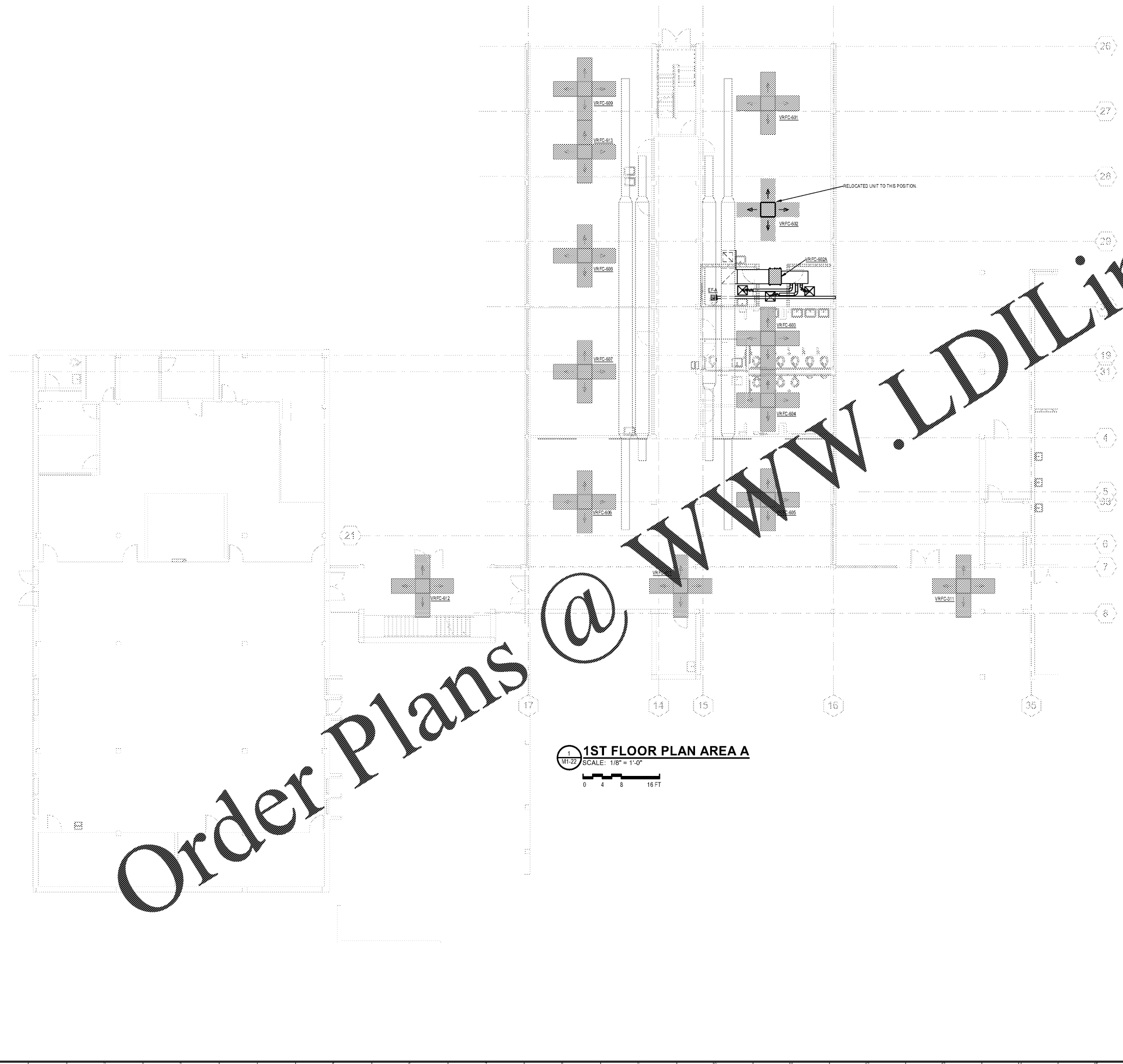
ISSUANCES		
No.	Drawing Issue Description	Date

**GENERAL NOTES**

1. SEE SHEET M1-00 FOR HVAC GENERAL NOTES

**KEY NOTES**

○



Order Plans @ WWW.LDILine.com

**1ST FLOOR PLAN AREA A**  
SCALE: 1/8" = 1'-0"  
0 4 8 16 FT

PROJECT NUMBER: CC-201715-JSA#19JSA43 PROJECT NAME: BARACK & MICHELLE OBAMA ACADEMY  
SHEET NUMBER: M1-22 - 1ST FLOOR HVAC PLAN - AREA A  
C:\Users\gmark\Documents\19JSA43 BarMO Academy\_gmark\jssace.com.rvt  
3/16/2020 5:13:42 PM

FTE - 450  
EXISTING IU - 38  
PROPOSED IU - 33

**BARACK & MICHELLE OBAMA ACADEMY**



970 Martin St SE, Atlanta, GA 30315  
ATLANTA PUBLIC SCHOOLS

**1ST FLOOR HVAC PLAN - AREA A**

**ICSA**  
CONSULTING ENGINEERS  
**USA**  
**Johnson, Spellman & Associates, Inc.**  
350 Research Court, Suite 130  
Peachtree Corners, GA 30092  
770-447-3555 www.jsaice.com

THW	CC #201715 - JSA #19JSA43
Principal Charge	03/16/20
SPB	Date
Project Manager	
SPB	
Drawn By	

M1-22