



**COOPER CARRY**  
THE CENTER FOR CONNECTIVE ARCHITECTURE

191 Peachtree Street NE  
Suite 2400  
Atlanta, GA 30303-1770  
(404) 237-2000  
coopercarry.com

**GENERAL NOTES**

- 1. SEE SHEET M1-00 FOR HVAC GENERAL NOTES

**KEY NOTES**

- ⊙ DEMO EXISTING DUCTWORK IN THIS AREA. SEE M1-26 FOR NEW EQUIPMENT AND DUCTWORK LAYOUT.
- ⊙ EXISTING DUCT RIBS TO REMAIN IN PLACE.

©2018 COOPER CARRY

**SCOPE DOCUMENTS**

The Contract Documents Issued for [Conceptual Design, Schematic Design, Design Development, Partial Construction Documents or Other Issuance up to Issued for Construction] are intended to be at that level of development and as such, may be neither complete nor coordinated. The [Construction Manager, Contractor, Design/Builder] is responsible for complete and coordinated pricing [and execution] of the Work, and shall include items necessary for the proper execution and completion of the Work, as shown, specified, reasonably inferred or required for a complete Project. For Work of designated design, systems, assemblies, components and materials shall comply with national, state and local code requirements. The [Construction Manager, Contractor, Design/Builder] shall inform the Owner and Architect, in timely fashion, of any discovered omissions, inconsistencies or errors in the Contract Documents.

**ISSUANCES**

No.	Drawing Issue Description	Date

FTE - 450  
EXISTING IU - 38  
PROPOSED IU - 33

**BARACK & MICHELLE OBAMA ACADEMY**



970 Martin St SE, Atlanta, GA 30315  
ATLANTA PUBLIC SCHOOLS

**2ND FLOOR HVAC DEMO - AREA B**

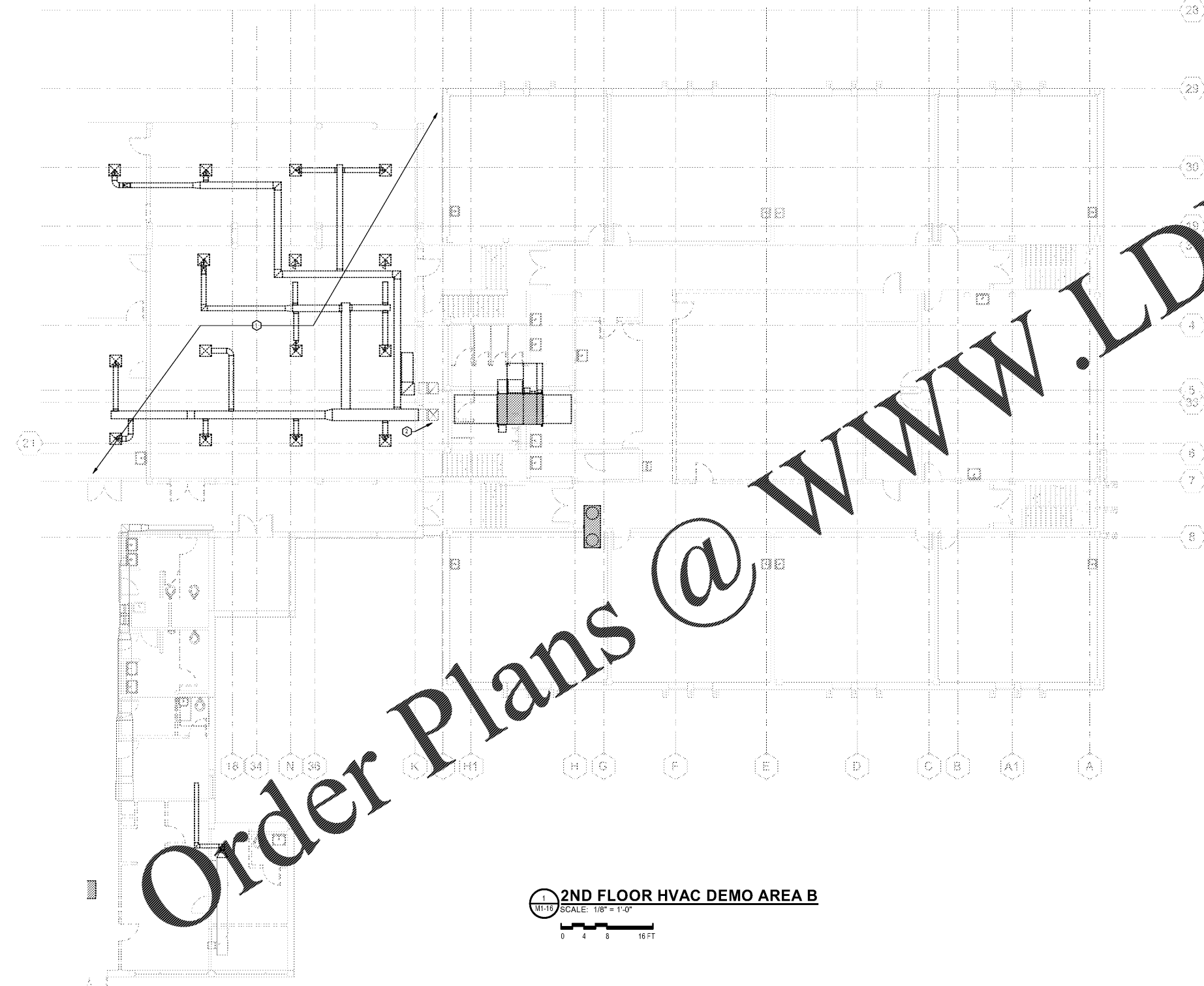


**Johnson, Spellman & Associates, Inc.**  
350 Research Court, Suite 130  
Peachtree Corners, GA 30092  
770-447-3555 www.jsa-inc.com

THW	CC #201715 - JSA #19J543
Principal Charge	
SPB	03/16/20
Project Manager	
SPB	
Drawn By	

**M1-16**

NOT ISSUED FOR CONSTRUCTION



Order Plans @ [www.LDILine.com](http://www.LDILine.com)

**M1-16 2ND FLOOR HVAC DEMO AREA B**  
SCALE: 1/8" = 1'-0"  
0 4 8 16 FT

PROJECT NUMBER: CC # 201715 - JSA #19J543 PROJECT NAME: BARACK & MICHELLE OBAMA ACADEMY  
SHEET NUMBER: M1-16 - 2ND FLOOR HVAC DEMO - AREA B  
C:\Users\gmark\Documents\19J543 BarMO Academy\_gmark@jsaice.com.rvt  
3/16/2020 5:13:30 PM