



COOPER CARRY
THE CENTER FOR CONNECTIVE ARCHITECTURE

191 Peachtree Street NE
Suite 2400
Atlanta, GA 30303-1770
(404) 237-2000
coopercarry.com

©2018 COOPER CARRY

SCOPE DOCUMENTS

The Contract Documents Issued for [Conceptual Design, Schematic Design, Design Development, Partial Construction Documents or Other Issuance up to Issued for Construction] are intended to be at that level of development and as such, may be neither complete nor coordinated. The [Construction Manager, Contractor, Design/Builder] is responsible for complete and coordinated pricing [and execution] of the Work, and shall include items necessary for the proper execution and completion of the Work, as shown, specified, reasonably inferred or required for a complete Project. For Work of obligated design, systems, assemblies, components and materials shall comply with national, state and local code requirements. The [Construction Manager, Contractor, Design/Builder] shall inform the Owner and Architect, in timely fashion, of any discovered omissions, inaccuracies or errors in the Contract Documents.

ISSUANCES		
No.	Drawing Issue Description	Date

FTE - 450
EXISTING IU - 38
PROPOSED IU - 33

BARACK & MICHELLE OBAMA ACADEMY



970 Martin St SE, Atlanta, GA 30315
ATLANTA PUBLIC SCHOOLS

1ST FLOOR HVAC DEMO - AREA A

THW	CC #201715 - JSA # 19J543
Principal Charge	
SPB	03/16/20
Project Manager	
SPB	
Drawn By	

M1-12

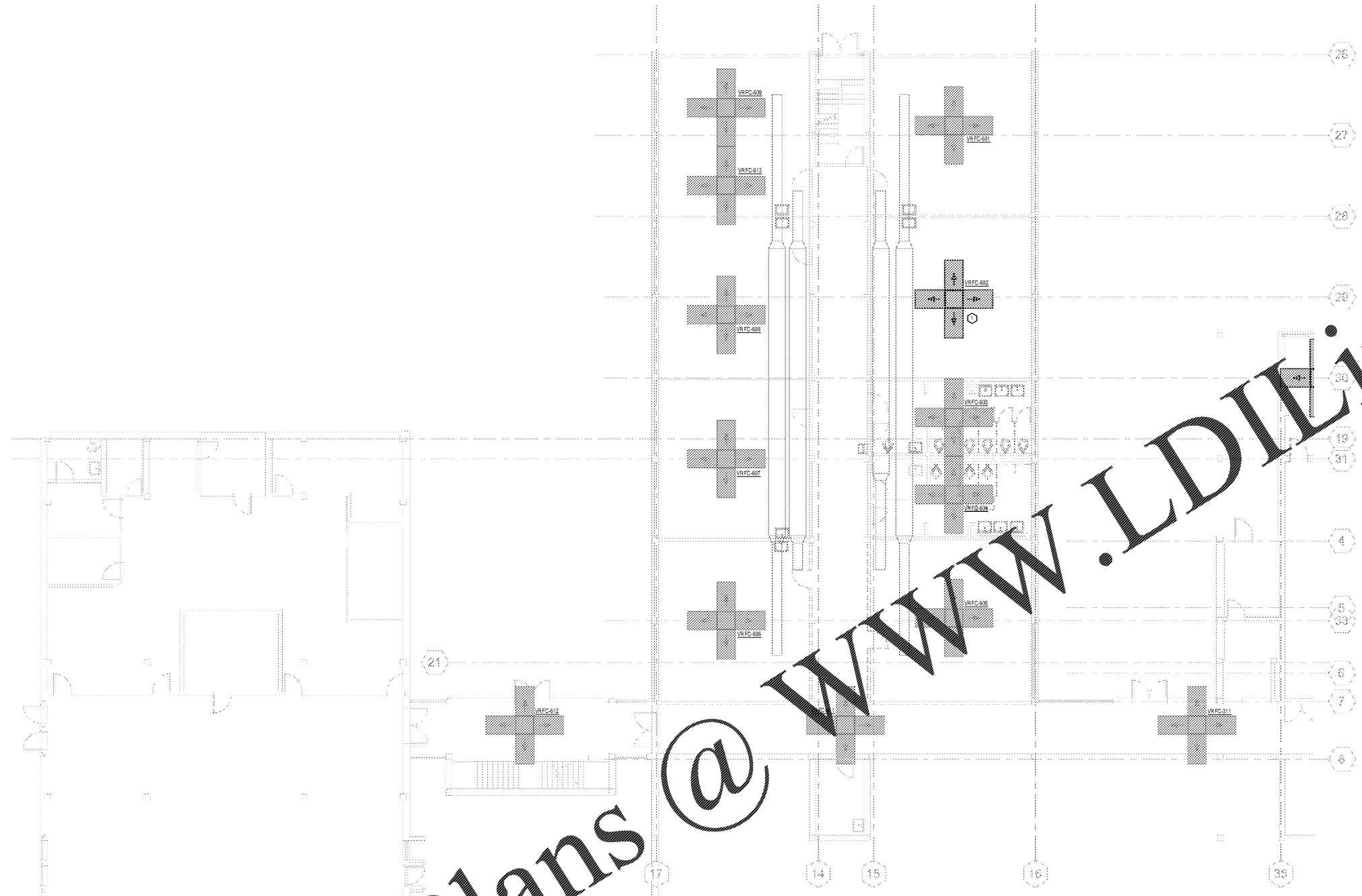
NOT ISSUED FOR CONSTRUCTION

GENERAL NOTES

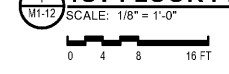
1. SEE SHEET M1-00 FOR HVAC GENERAL NOTES

KEY NOTES

○ UNIT TO BE RELOCATED. SEE M1-22 FOR NEW LOCATION.



1ST FLOOR PLAN DEMO AREA A



Order Plans @ WWW.LDILine.com

PROJECT NUMBER: CC # 201715 - JSA # 19J543 PROJECT NAME: BARACK & MICHELLE OBAMA ACADEMY
SHEET NUMBER: M1-12 - 1ST FLOOR HVAC DEMO - AREA A
C:\Users\gmark\Documents\19J543 BarMO Academy_gmark\jssace.com.rvt
3/16/2020 5:13:09 PM



Johnson, Spellman & Associates, Inc.
350 Research Court, Suite 130
Peachtree Corners, GA 30092
770-447-3555 www.jsaoc.com