



COOPER CARRY
THE CENTER FOR CONNECTIVE ARCHITECTURE

191 Peachtree Street NE
Suite 2400
Atlanta, GA 30303-1770
(404) 237-2000
coopercarry.com

©2018 COOPER CARRY

SCOPE DOCUMENTS

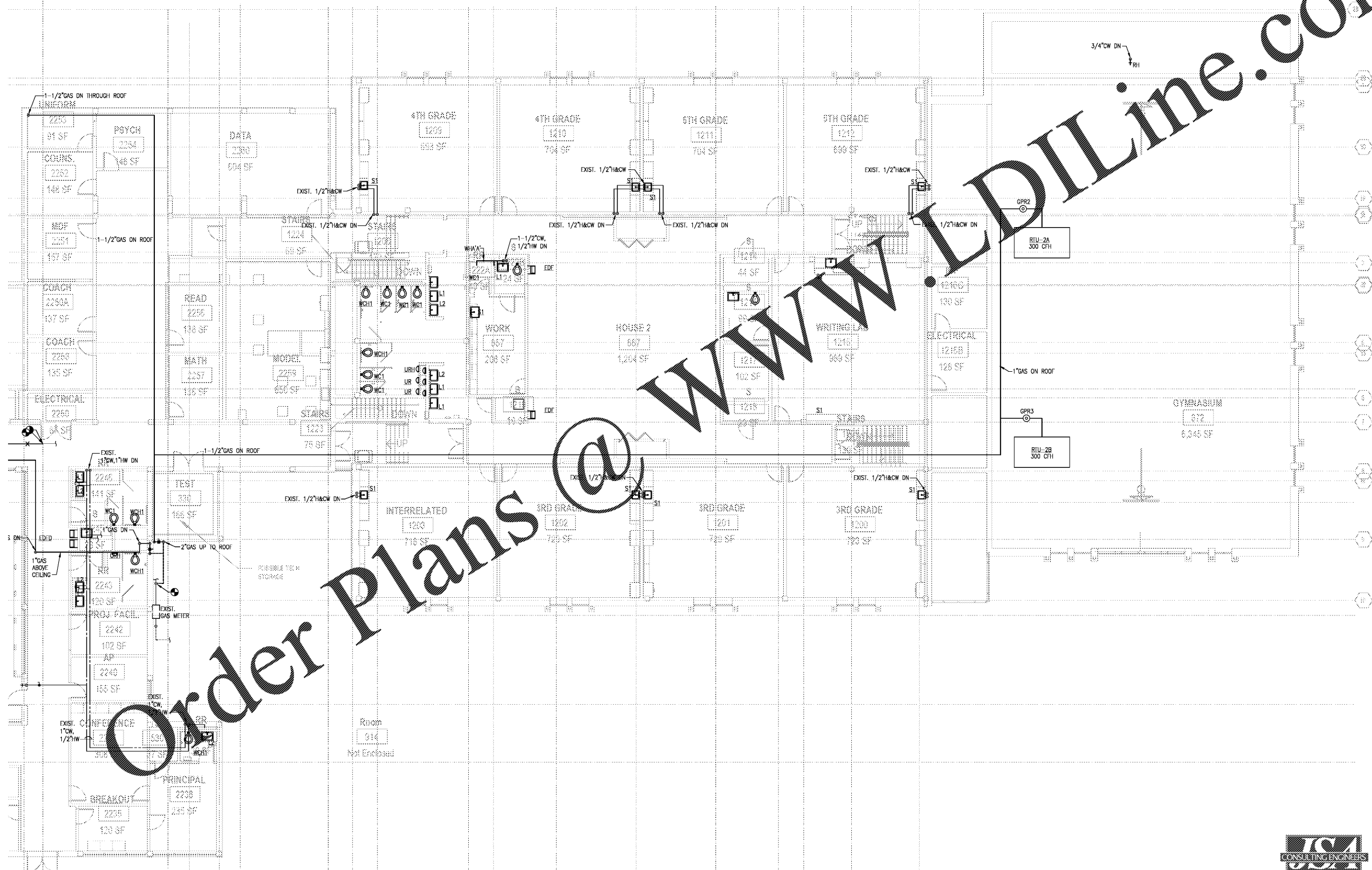
The Contract Documents issued for (Conceptual Design, Schematic Design, Design Development, Partial Construction Documents or Other Issuance up to Issued for Construction) are intended to be at that level of (Construction Manager, Contractor, Design/Builder) is responsible for complete and coordinated pricing (and execution) of the Work, and shall include items necessary for the proper execution and completion of the Work, as shown, specified, reasonably inferred or required for a complete components and materials shall comply with national, state and local code shall inform the Owner and Architect, in timely fashion, of any discovered omissions, inconsistencies or errors in the Contract Documents.

ISSUANCES		
No.	Drawing Issue Description	Date
1	DC SUBMISSION	11/14/19
2	DESIGN DEVELOPMENT	3/18/20

GENERAL NOTES

1. SEE P.001 FOR PLUMBING GENERAL NOTES.

A1.25 A1.26



Order Plans @ WWW.LDILine.com

2ND FLOOR PLUMBING NEW WORK PLAN - SUPPLY - AREA B
SCALE: 1/8" = 1'-0"



FTE - 450
EXISTING IU - 38
PROPOSED IU - 33

BARACK & MICHELLE OBAMA ACADEMY



970 Martin St SE, Atlanta, GA 30315

ATLANTA PUBLIC SCHOOLS

**2ND FLOOR PLUMBING
NEW WORK PLAN - SUPPLY
AREA B**

AG	20190109
THW	03/18/20
THW	
B. FERREN / J. KLEIN	

P2.29

NOT ISSUED FOR CONSTRUCTION