



COOPER CARRY
THE CENTER FOR CONNECTIVE ARCHITECTURE

191 Peachtree Street NE
Suite 2400
Atlanta, GA 30303-1770
(404) 237-2000
coopercarry.com

©2018 COOPER CARRY

SCOPE DOCUMENTS
The Contract Documents issued for (Conceptual Design, Schematic Design, Design Development, Permit Construction Documents or Other Issuance up to Issued for Construction) are intended to be at that level of (Construction Manager, Contractor, Design/Builder) is responsible for complete and coordinated pricing (and execution) of the Work, and shall include items necessary for the proper execution and completion of the Work, as shown, specified, reasonably inferred or required for a complete components and materials shall comply with national, state and local code shall inform the Owner and Architect, in timely fashion, of any discovered omissions, inconsistencies or errors in the Contract Documents.

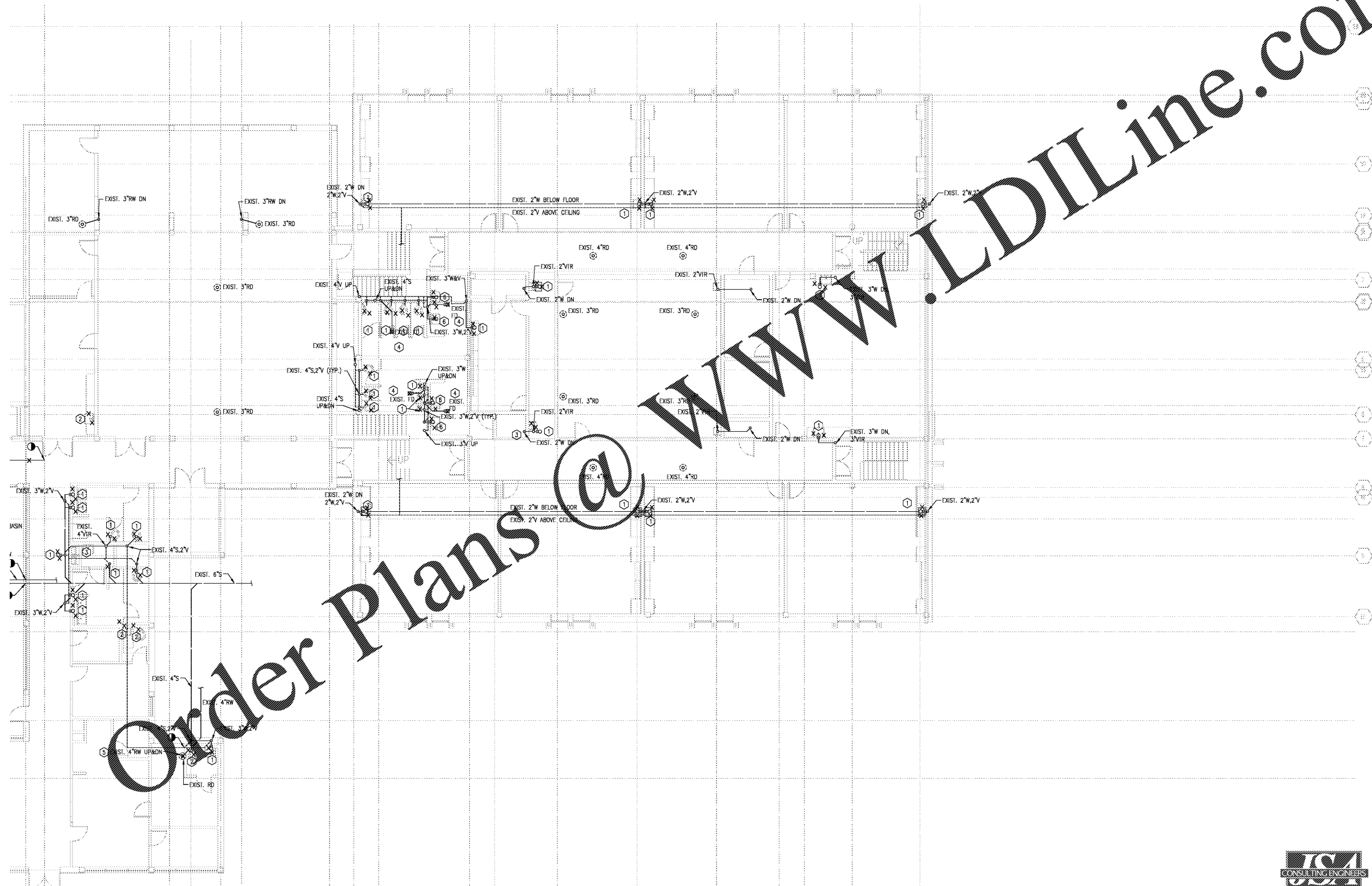
ISSUANCES		
No.	Drawing Issue Description	Date
1	DC SUBMISSION	11/14/19
2	DESIGN DEVELOPMENT	3/18/20

GENERAL NOTES

1. SEE PD.01 FOR PLUMBING GENERAL NOTES.

KEY NOTES

- ① REMOVE EXISTING PLUMBING FIXTURE. EXISTING PLUMBING PIPING SHALL REMAIN AND BE REUSED BY NEW FIXTURE AT THE SAME LOCATION.
- ② REMOVE EXISTING PLUMBING FIXTURE. CAP ASSOCIATED PLUMBING PIPING IN CONCEALED LOCATION.
- ③ EXISTING PLUMBING FIXTURE SHALL REMAIN.
- ④ REMOVE EXISTING FLOOR DRAIN. ASSOCIATED PIPING SHALL REMAIN AND BE REUSED BY NEW FLOOR DRAIN AT THE SAME LOCATION.
- ⑤ REMOVE EXISTING RAINWATER LEADER AND RELOCATE IT IN NEW CHAST, SEE NEW WORK PLAN.
- ⑥ REMOVE EXISTING LAVATORY. EXISTING PLUMBING PIPING SHALL BE USED FOR NEW LAVATORIES, SEE NEW WORK.



Order Plans @ WWW.LDILine.com

2ND FLOOR PLUMBING DEMOLITION PLAN - DRAIN - AREA B
SCALE: 1/8" = 1'-0"



Johnson, Spellman & Associates, Inc.
3030 Peachtree Corners, Suite 300
Peachtree Corners, GA 30092
770-447-0255 www.jsai.com

FTE - 450
EXISTING IU - 38
PROPOSED IU - 33

BARACK & MICHELLE OBAMA
ACADEMY



970 Martin St SE, Atlanta, GA 30315

ATLANTA PUBLIC SCHOOLS
2ND FLOOR PLUMBING
DEMOLITION PLAN - DRAIN
AREA B

AG	20190109
THW	03/18/20
THW	
B. FERREN / J. KLEIN	P1.17

NOT ISSUED FOR CONSTRUCTION