



SCOPE DOCUMENTS

The Contract Documents Issued for [Conceptual Design, Schematic Design, Design Development, Partial Construction Documents or Other Issuance up to Issued for Construction] are intended to be at that level of development and as such, may be neither complete nor coordinated. The [Construction Manager, Contractor, Design/Builder] is responsible for complete and coordinated pricing [and execution] of the Work, and shall include items necessary for the proper execution and completion of the Work, as shown, specified, reasonably inferred or required for a complete Project. For Work of obligated design, systems, assemblies, components and materials shall comply with national, state and local code requirements. The [Construction Manager, Contractor, Design/Builder] shall inform the Owner and Architect, in timely fashion, of any discovered omissions, inconsistencies or errors in the Contract Documents.

ISSUANCES

No.	Drawing Issue Description	Date
1	DESIGN DEVELOPMENT	3/18/20

GADOE CODE: 5066
FTE - 450
EXISTING IU - 38
PROPOSED IU - 33

BARACK & MICHELLE OBAMA ACADEMY



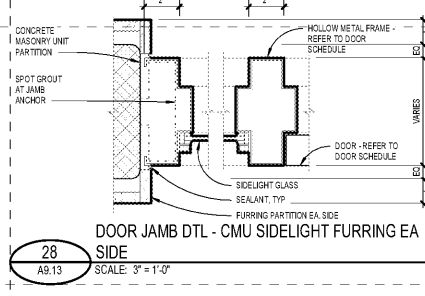
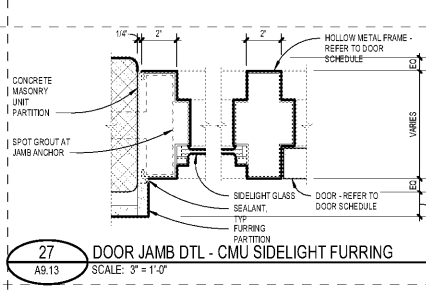
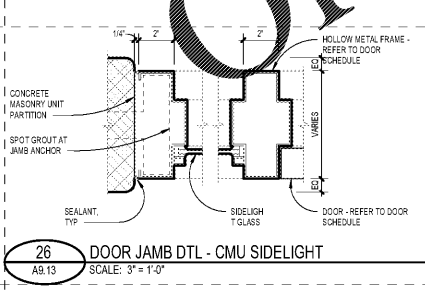
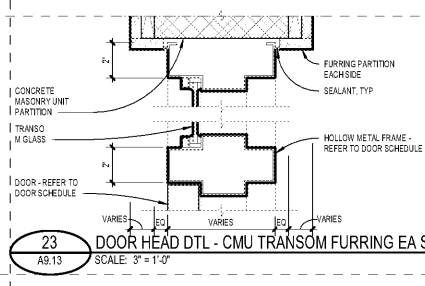
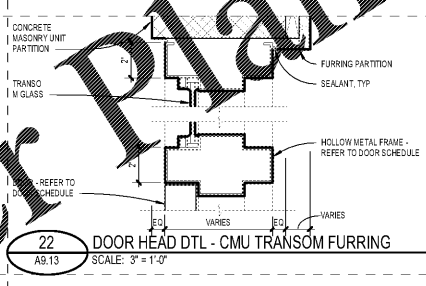
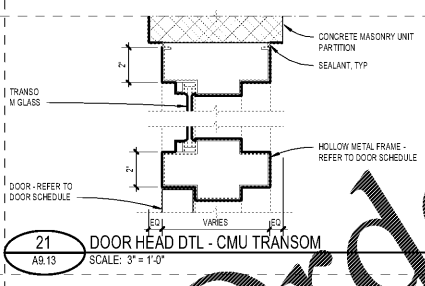
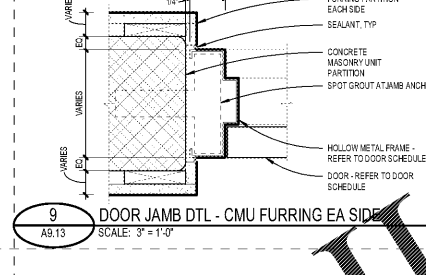
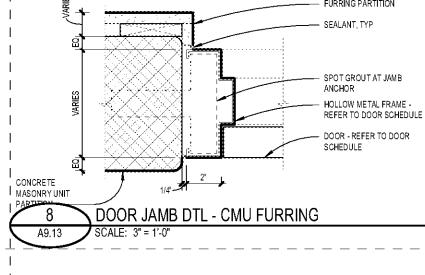
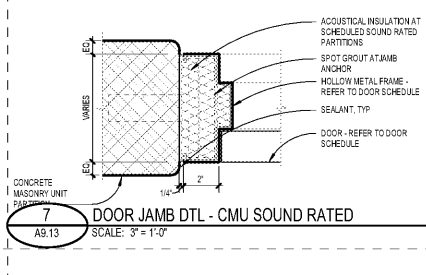
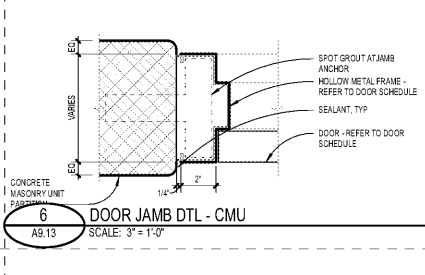
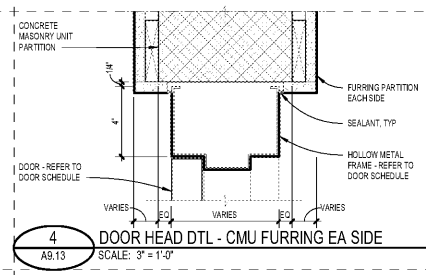
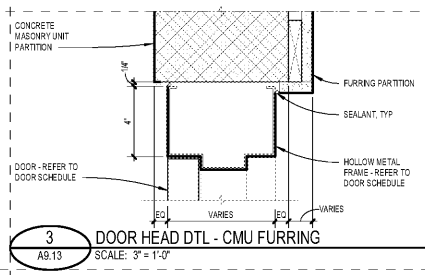
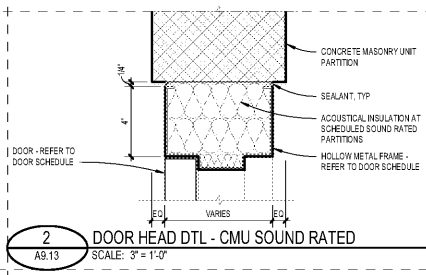
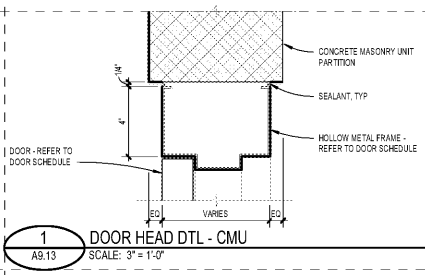
970 Martin St SE, Atlanta, GA 30315

ATLANTA PUBLIC SCHOOLS

DOOR DETAILS (CMU PARTITIONS)

ROBERT A. JUST	20190109
Principal/Designer	Project No.
S. TARGHAN	031820
Project Manager	Date
B. FERREN	
Project Architect	
B. FERREN	
Staff Architect	
B. FERREN / G. HAHN	
Interior Design	

A9.13



PROJECT NUMBER: 20190109 PROJECT NAME: BARACK & MICHELLE OBAMA ACADEMY
 FILED: A9.13 DOOR DETAILS (CMU PARTITIONS) REVISED: 03/18/20
 3/17/2020 6:51:23 PM

Order Plans @

www.LDILine.com

NESTED FRAME CMU DOOR DETAILS

NESTED FRAME CMU DOOR, TRANSOM & SIDELIGHT DETAILS