



SCOPE DOCUMENTS

The Contract Documents Issued for [Conceptual Design, Schematic Design, Design Development, Partial Construction Documents or Other Issuance up to Issued for Construction] are intended to be at that level of development and as such, may be neither complete nor coordinated. The [Construction Manager, Contractor, Design/Builder] is responsible for complete and coordinated pricing [and execution] of the Work, and shall include items necessary for the proper execution and completion of the Work, as shown, specified, reasonably inferred or required for a complete Project. For Work of obligated designer, systems, assemblies, components and materials shall comply with national, state and local code requirements. The [Construction Manager, Contractor, Design/Builder] shall inform the Owner and Architect, in timely fashion, of any discovered omissions, inaccuracies or errors in the Contract Documents.

ISSUANCES		
No.	Drawing Issue Description	Date
1	DESIGN DEVELOPMENT	3/18/20

GADOE CODE: 5066
FTE - 450
EXISTING IU - 38
PROPOSED IU - 33

BARACK & MICHELLE OBAMA ACADEMY



970 Martin St SE, Atlanta, GA 30315
ATLANTA PUBLIC SCHOOLS
EXTERIOR WINDOW TYPES

ROBERT A. JUST	20190109
Principal/Designer	Project No.
S. TARRIHAN	03/18/20
Project Manager	Date
B. FERREN	
Project Architect	
M. WALKER	
Staff Architect	
B. FERREN / G. HAHN	
Interior Design	

ELEVATION LEGEND AND NOTES

- SEE SPECIFICATIONS FOR SPECIFIC GLAZING SCHEDULE REQUIREMENTS.
- MULLION SIZES ARE INDICATED FOR DETAILING PURPOSES. WINDOW MFR. TO ENGINEER MULLION SIZES TO MEET MULLION SPACING AND DESIGN INTENT.
- PROVIDE GLAZING AS INDICATED ON DRAWINGS OR AS REQUIRED BY CODE TO MEET SAFETY GLAZING REQUIREMENTS.
- ALL MUNTINS ARE APPLIED INSIDE AND OUTSIDE OF INSULATED GLASS LITES.

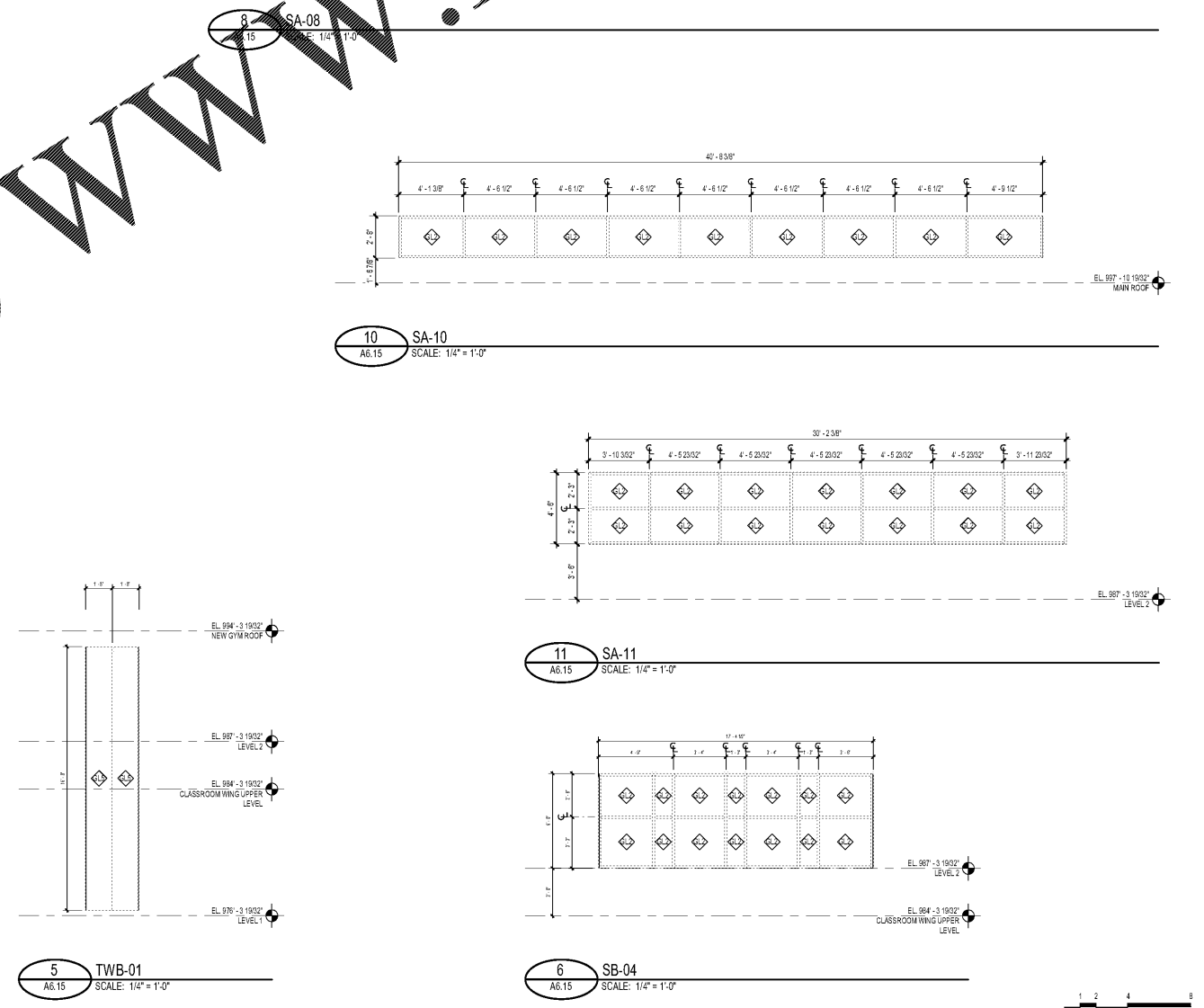
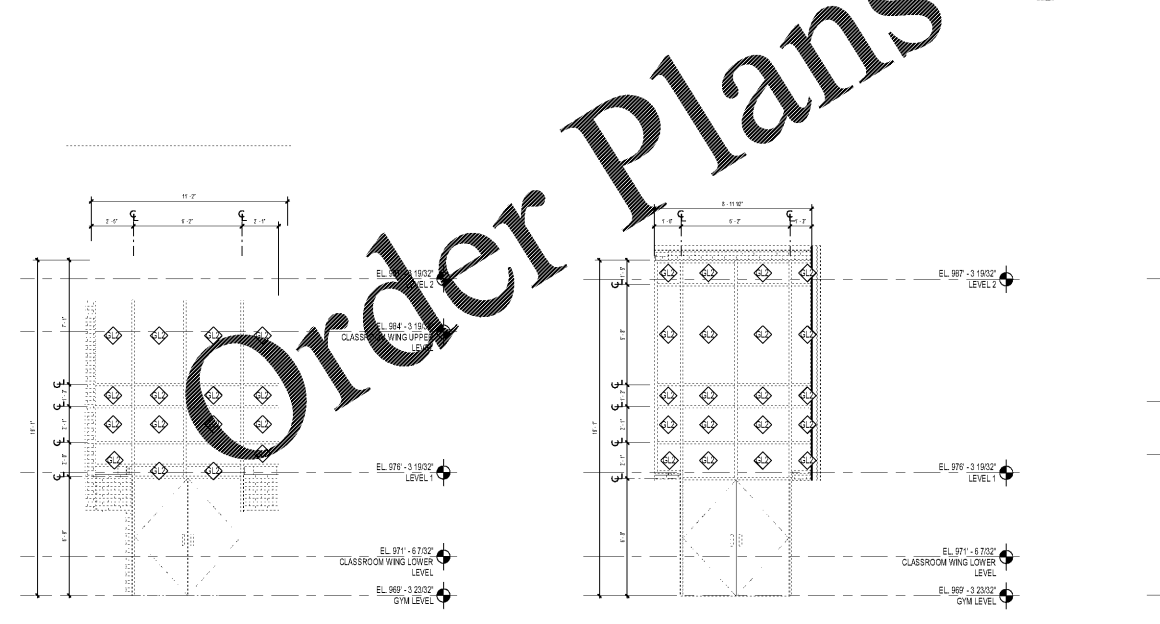
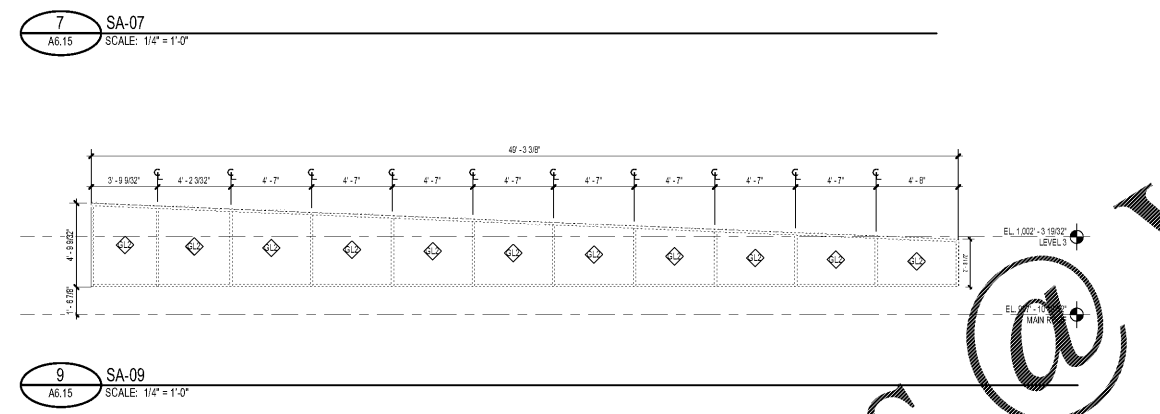
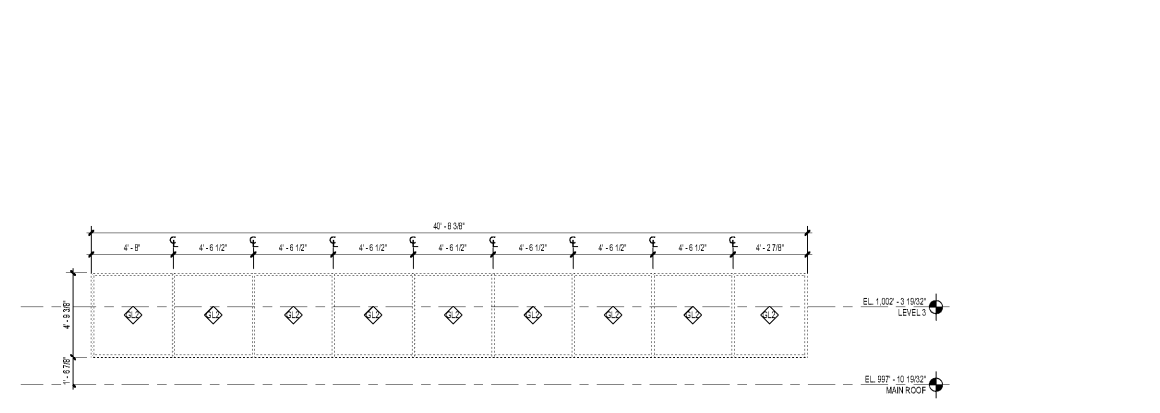
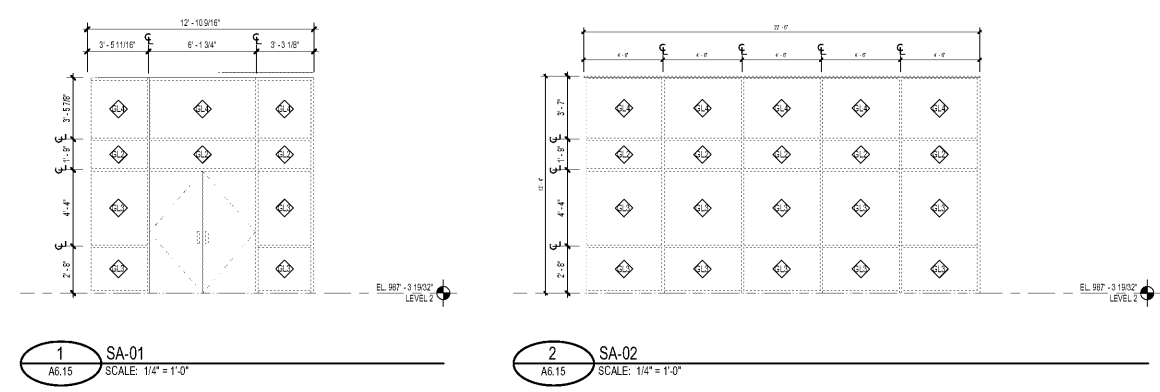
GL1	TYPE GL 1 - CLEAR INTERIOR GLASS
GL2	TYPE GL 2 - INSULATED LOW E GLASS, HEAT STRENGTHENED/ TEMPERED
GL3	TYPE GL 3 - INSULATED LOW E GLASS, HEAT STRENGTHENED/ LAMINATED
GL4	TYPE GL 4 - INSULATED SPANDREL GLASS, HEAT STRENGTHENED/ TEMPERED
GL5	TYPE GL 5 - POLYCARBONATE PANEL

SIA-01
1: TYPE 01
A: LOCATION AREA (A OR B)
S: INTERIOR STOREFRONT WINDOW

SA-01
1: TYPE 01
A: LOCATION AREA (A OR B)
C: EXTERIOR STOREFRONT WINDOW

TWB-01
1: TYPE 01
A: LOCATION AREA (A OR B)
C: TRANSLUCENT WALL SYSTEM

FA-01
1: TYPE 01
A: LOCATION AREA (A OR B)
C: EXTERIOR FIXED WINDOW



Order Plans @ WWW.LDILine.com

PROJECT NUMBER: 20190109 PROJECT NAME: BARACK & MICHELLE OBAMA ACADEMY
FILED: H:\ARCHITECTURE\PROJECTS\20190109_Barack and Michelle Obama Central_Terran
02/13/20 rvt
3/17/2020 6:50:56 PM