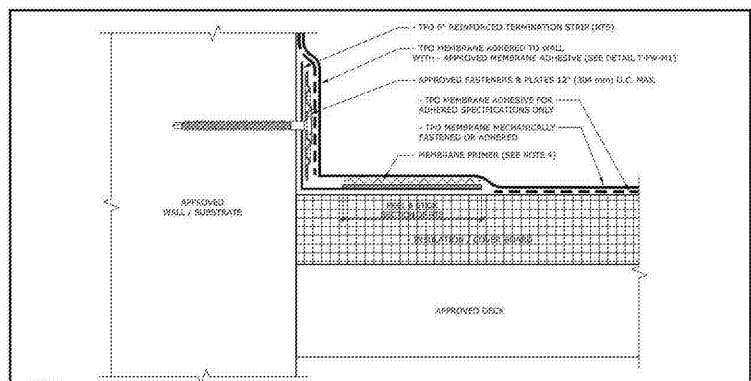




SCOPE DOCUMENTS
The Contract Documents issued for Conceptual Design, Schematic Design, Design Development, Partial Construction Documents or Other Issuance up to Issued for Construction are intended to be at that level of development and as such, may be neither complete nor coordinated. The [Construction Manager, Contractor, Design/Builder] is responsible for complete and coordinated pricing [and execution] of the Work, and shall include items necessary for the proper execution and completion of the Work, as shown, specified, reasonably inferred or required for a complete Project. For Work of designed origin, systems, assemblies, components and materials shall comply with national, state and local code requirements. The [Construction Manager, Contractor, Design/Builder] shall inform the Owner and Architect, in timely fashion, of any discovered omissions, inaccuracies or errors in the Contract Documents.

ISSUANCES

No.	Drawing Issue Description	Date
1	DESIGN DEVELOPMENT	3/18/20

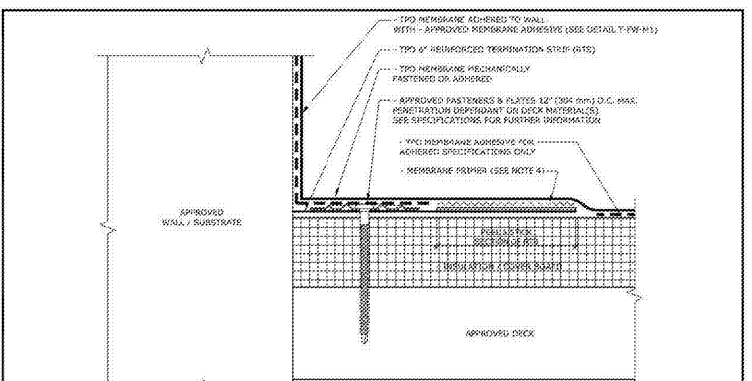


- NOTES:**
- PLEASE SEE SINGLE PLY FLASHING SPECIFICATIONS FOR A FULL DESCRIPTION OF INSTALLATION INSTRUCTIONS AND REQUIREMENTS WHICH ARE CONSIDERED A PART OF THIS DETAIL.
 - ANY CARPENTRY OR METAL WORK SHOULD BE DESIGNED AND CONSTRUCTED IN ACCORDANCE WITH LOCAL CODE REQUIREMENTS AND/OR PROJECT SPECIFICATIONS. THESE COMPONENTS SHOULD BE REVIEWED AND APPROVED BY A LICENSED DESIGN PROFESSIONAL.
 - PRIME UNDERLAYER OF FIELD MEMBRANE AT WALL & STRUCK SECTION WITH: TPO MEMBRANE FISHER OR - SINGLE PLY MEMBRANE FISHER (LOW VISC). ROLL TPO MEMBRANE WITH ROLLER UNDER PRESSURE AT WALL & STRUCK SECTION OF RTS.
 - THIS DETAIL IS NOT COMPATIBLE OR SUITABLE FOR GUARANTEE WITH - SELF ADHESIVE TPO MEMBRANE.

BASE FLASHING WITH VERTICAL TERMINATION STRIP (RTS)

REVISIONS	DATE	BY	APP. DATE
T-FW-B2	03/18/20	AS	N.T.S.

3 T-FW-B2
AS 18 SCALE: 12" = 1'-0"

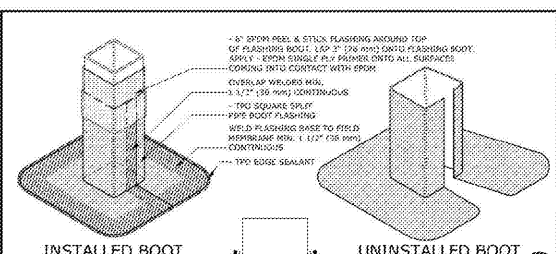


- NOTES:**
- PLEASE SEE SINGLE PLY FLASHING SPECIFICATIONS FOR A FULL DESCRIPTION OF INSTALLATION INSTRUCTIONS AND REQUIREMENTS WHICH ARE CONSIDERED A PART OF THIS DETAIL.
 - ANY CARPENTRY OR METAL WORK SHOULD BE DESIGNED AND CONSTRUCTED IN ACCORDANCE WITH LOCAL CODE REQUIREMENTS AND/OR PROJECT SPECIFICATIONS. THESE COMPONENTS SHOULD BE REVIEWED AND APPROVED BY A LICENSED DESIGN PROFESSIONAL.
 - PRIME UNDERLAYER OF FIELD MEMBRANE AT WALL & STRUCK SECTION WITH: TPO MEMBRANE FISHER OR - SINGLE PLY MEMBRANE FISHER (LOW VISC). ROLL TPO MEMBRANE WITH ROLLER UNDER PRESSURE AT WALL & STRUCK SECTION OF RTS.
 - THIS DETAIL IS NOT COMPATIBLE OR SUITABLE FOR GUARANTEE WITH - SELF ADHESIVE TPO MEMBRANE.

BASE FLASHING WITH HORIZONTAL TERMINATION STRIP (RTS)

REVISIONS	DATE	BY	APP. DATE
T-FW-B1	03/18/20	AS	N.T.S.

2 T-FW-B1
AS 18 SCALE: 12" = 1'-0"

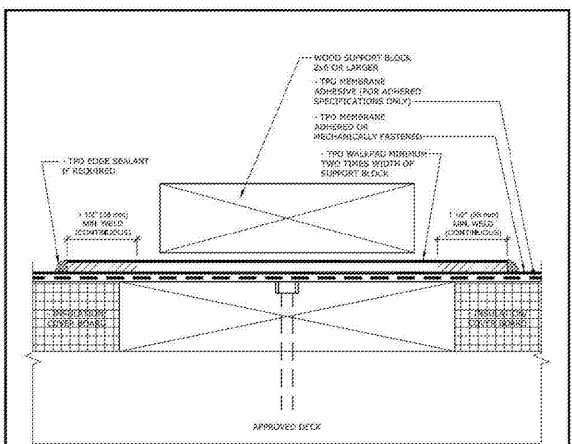


- NOTES:**
- CLEAN TOP 3/4" (20 mm) OR TPO PIPE BOOT WITH - SINGLE PLY MEMBRANE FLASHING PRIOR TO INSTALLATION OF BOOM FLASHING.
 - APPROVED FASTENER AND PLATE - PENETRATION DEPENDANT ON FLASHING MATERIALS. SEE SPECIFICATIONS FOR FURTHER INFORMATION.
 - WELD FLASHING BASE TO FIELD MEMBRANE MIN. 1 1/2" (38 mm) WELD. CONTRACTOR TO VERIFY CONTACT WITH OTHER INFORMATION.
 - APPROVED FASTENER AND PLATE - PENETRATION DEPENDANT ON FLASHING MATERIALS. SEE SPECIFICATIONS FOR FURTHER INFORMATION.
 - REMOVE SURFACE MOUNTED TERMINATION PARTS RESPECTIVELY, WEATHERPROOF AND MAINTAIN CONCRETE AND MASONRY SUBSTRATES.
 - MINIMUM FLASHING HEIGHT OF 3" (76 mm) ABOVE BOOM FLASHING.

TPO SPLIT PIPE BOOT (SQUARE)

REVISIONS	DATE	BY	APP. DATE
T-FP-05	03/18/20	AS	N.T.S.

1 T-FP-05
AS 18 SCALE: 12" = 1'-0"

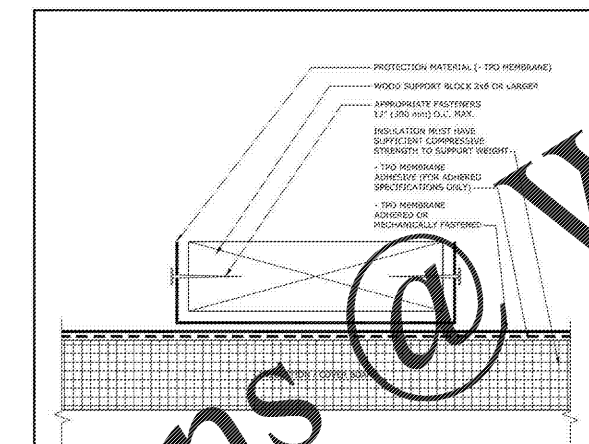


- NOTES:**
- PLEASE SEE SINGLE PLY FLASHING SPECIFICATIONS FOR A FULL DESCRIPTION OF INSTALLATION INSTRUCTIONS AND REQUIREMENTS WHICH ARE CONSIDERED A PART OF THIS DETAIL.
 - ANY CARPENTRY OR METAL WORK SHOULD BE DESIGNED AND CONSTRUCTED IN ACCORDANCE WITH LOCAL CODE REQUIREMENTS AND/OR PROJECT SPECIFICATIONS. THESE COMPONENTS SHOULD BE REVIEWED AND APPROVED BY A LICENSED DESIGN PROFESSIONAL.
 - THIS ROOF SEALANT IS REQUIRED ON ALL CUT OR NON-INSULATED EDGES OF MEMBRANE. THIS INCLUDES FUTURE CUT MEMBRANE.

SUPPORT (MEDIUM)

REVISIONS	DATE	BY	APP. DATE
T-PT-02	03/18/20	AS	N.T.S.

7 T-PT-02
AS 18 SCALE: 12" = 1'-0"

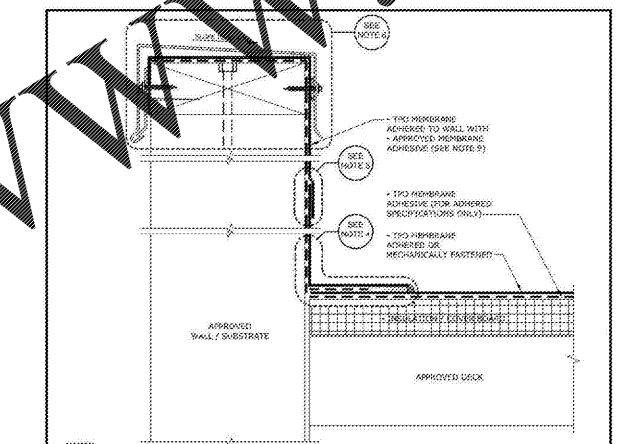


- NOTES:**
- PLEASE SEE SINGLE PLY FLASHING SPECIFICATIONS FOR A FULL DESCRIPTION OF INSTALLATION INSTRUCTIONS AND REQUIREMENTS WHICH ARE CONSIDERED A PART OF THIS DETAIL.
 - ANY CARPENTRY OR METAL WORK SHOULD BE DESIGNED AND CONSTRUCTED IN ACCORDANCE WITH LOCAL CODE REQUIREMENTS AND/OR PROJECT SPECIFICATIONS. THESE COMPONENTS SHOULD BE REVIEWED AND APPROVED BY A LICENSED DESIGN PROFESSIONAL.

SUPPORT (LIGHT)

REVISIONS	DATE	BY	APP. DATE
T-PT-01	03/18/20	AS	N.T.S.

6 T-PT-01
AS 18 SCALE: 12" = 1'-0"

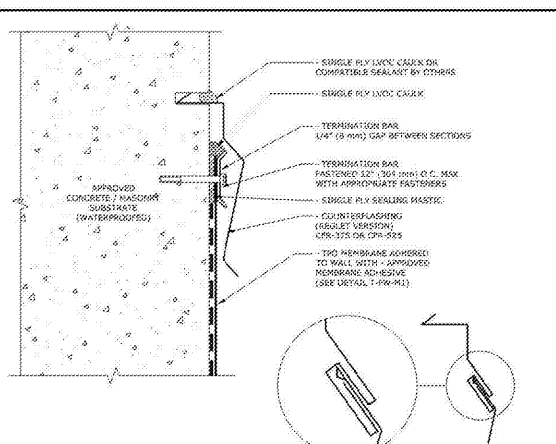


- NOTES:**
- PLEASE SEE SINGLE PLY FLASHING SPECIFICATIONS FOR A FULL DESCRIPTION OF INSTALLATION INSTRUCTIONS AND REQUIREMENTS WHICH ARE CONSIDERED A PART OF THIS DETAIL.
 - ANY CARPENTRY OR METAL WORK SHOULD BE DESIGNED AND CONSTRUCTED IN ACCORDANCE WITH LOCAL CODE REQUIREMENTS AND/OR PROJECT SPECIFICATIONS. THESE COMPONENTS SHOULD BE REVIEWED AND APPROVED BY A LICENSED DESIGN PROFESSIONAL.
 - THIS INCLUDES FACTORY CUT MEMBRANE (SEE DETAIL T-FW-01).
 - FOR - APPROVED BASE FLASHING FASTENING METHODS SEE T-FW-01 DETAIL.
 - FOR - APPROVED INTERMEDIATE FLASHING FASTENING METHODS SEE T-FW-17 DETAIL.
 - FOR - APPROVED TOP OF WALL FLASHING METHODS SEE T-FW-17 DETAIL.
 - APPROVED ADHESIVES FOR USE ON VERTICAL FLASHING APPLICATIONS INCLUDE: - TPO & EPDM, MEMBRANE BONDING ADHESIVE (TPO & EPDM), AND - TPO WATER BASED MEMBRANE ADHESIVE.

TPO BASE & WALL FLASHING WITH COPING

REVISIONS	DATE	BY	APP. DATE
T-FW-M1	03/18/20	AS	N.T.S.

5 T-FW-M1
AS 18 SCALE: 12" = 1'-0"



- NOTES:**
- PLEASE SEE - SINGLE PLY FLASHING SPECIFICATIONS FOR A FULL DESCRIPTION OF INSTALLATION INSTRUCTIONS AND REQUIREMENTS WHICH ARE CONSIDERED A PART OF THIS DETAIL.
 - ANY CARPENTRY OR METAL WORK SHOULD BE DESIGNED AND CONSTRUCTED IN ACCORDANCE WITH LOCAL CODE REQUIREMENTS AND/OR PROJECT SPECIFICATIONS. THESE COMPONENTS SHOULD BE REVIEWED AND APPROVED BY A LICENSED DESIGN PROFESSIONAL.
 - ALL SEALANTS / SEALERS SHALL BE INDUSTRY/FACTORY INSPECTED AND MAINTAINED BY THE BUILDING OWNER THROUGHOUT THE LIFE OF THE BOOM.
 - TO REMOVE SURFACE MOUNTED TERMINATION PARTS RESPECTIVELY, WEATHERPROOF AND MAINTAIN CONCRETE AND MASONRY SUBSTRATES.
 - MINIMUM FLASHING HEIGHT OF 3" (76 mm) ABOVE BOOM FLASHING.

TPO INTERMEDIATE TERMINATION WITH COUNTERFLASHING & CUT IN REGLET

REVISIONS	DATE	BY	APP. DATE
T-FW-17	03/18/20	AS	N.T.S.

4 T-FW-17
AS 18 SCALE: 12" = 1'-0"

PROJECT NUMBER: 20190100 PROJECT NAME: BARACK & MICHELLE OBAMA ACADEMY
FILED: \\C:\Users\jordan\Documents\20190100\190100-Barack and Michelle Obama Central_Terran
02/13/20 11:57 AM
3/17/2020 6:50:06 PM

Order Plans @ www.lidline.com

GADOE CODE: 5066
FTE - 450
EXISTING IU - 38
PROPOSED IU - 33

BARACK & MICHELLE OBAMA
ACADEMY



970 Martin St SE, Atlanta, GA 30315

ATLANTA PUBLIC SCHOOLS

ROOF DETAILS

NAME	DATE
ROBERT A. JUST	2019/01/09
Principal Designer	
S. TARRHAN	03/18/20
Project Manager	
B. FERREN	
Project Architect	
M. WALKER	
Staff Architect	
B. FERREN / G. HAHN	
Interior Design	

A5.18