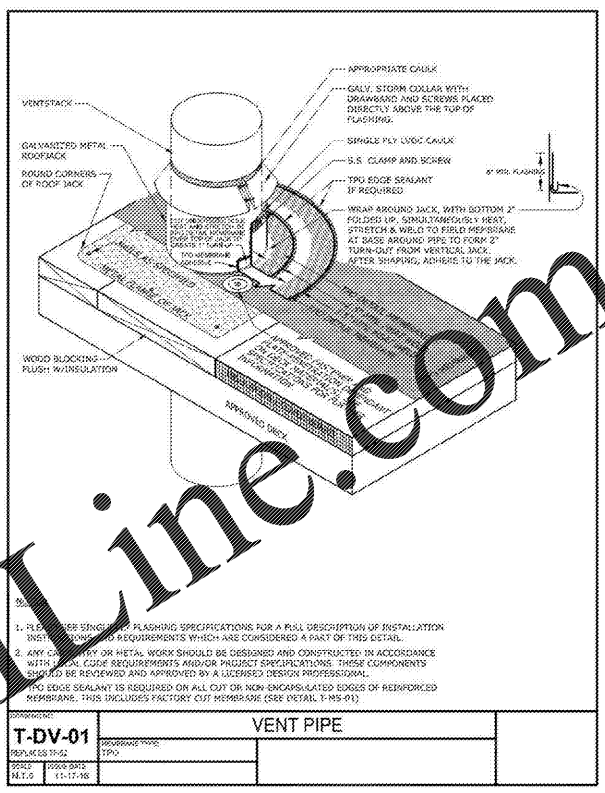
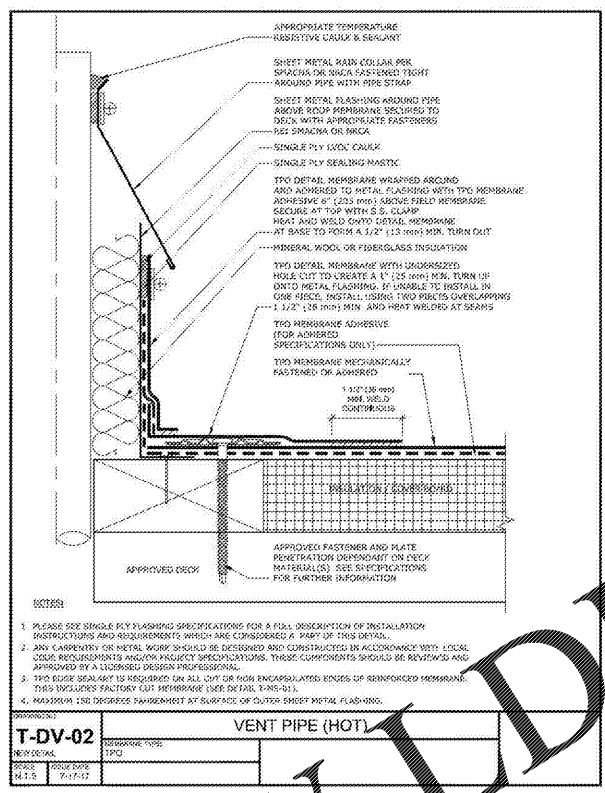
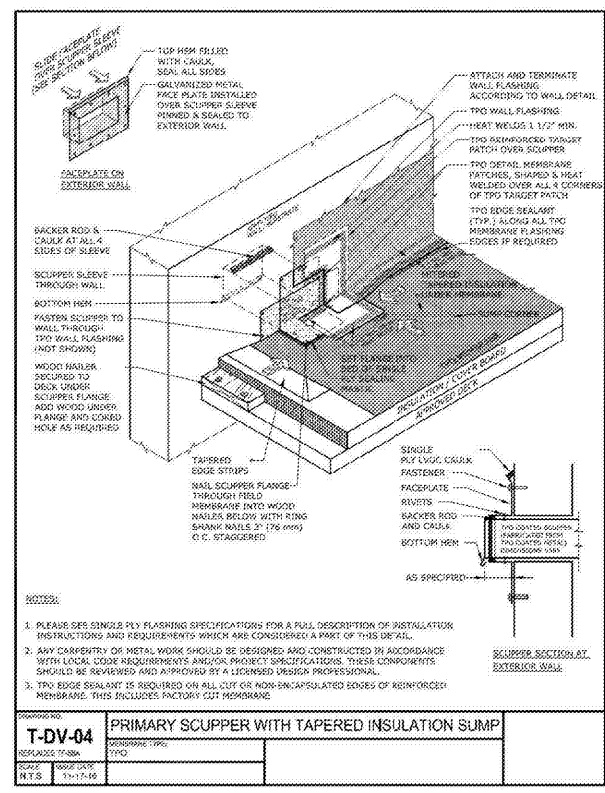
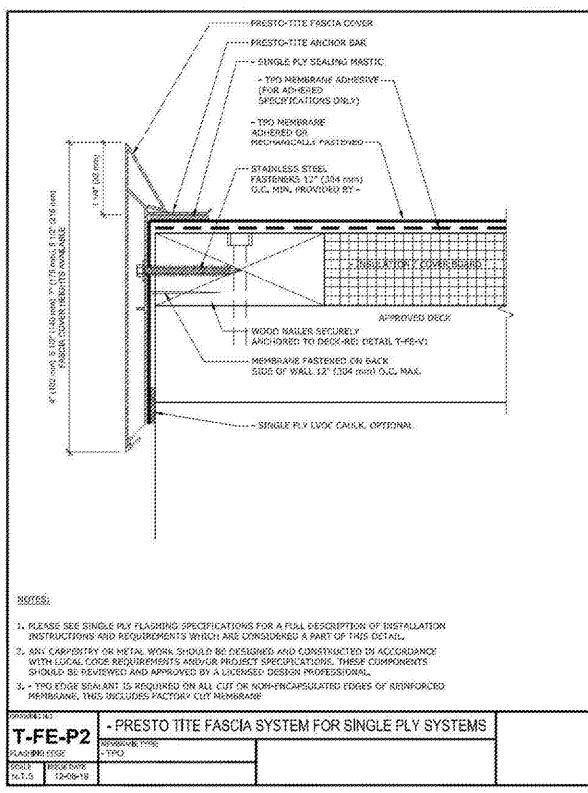




SCOPE DOCUMENTS
The Contract Documents issued for Conceptual Design, Schematic Design, Design Development, Partial Construction Documents or Other Issuance up to Issued for Construction are intended to be at that level of development and as such, may be neither complete nor coordinated. The [Contract Manager, Contractor, Design/Builder] is responsible for complete and coordinated pricing [and execution] of the Work, and shall include items necessary for the proper execution and completion of the Work, as shown, specified, reasonably inferred or required for a complete Project. For work of designed origin, systems, assemblies, components and materials shall comply with national, state and local code requirements. The [Contract Manager, Contractor, Design/Builder] shall inform the Owner and Architect in timely fashion, of any discovered omissions, inaccuracies or errors in the Contract Documents.

ISSUANCES

No.	Drawing Issue Description	Date
1	DESIGN DEVELOPMENT	3/18/20



4 T-DV-PT SCALE: 12" = 1'-0"

3 T-DV-04 SCALE: 12" = 1'-0"

2 T-DV-02 SCALE: 12" = 1'-0"

1 T-DV-01 SCALE: 12" = 1'-0"

