



**SCOPE DOCUMENTS**  
The Contract Documents Issued for [Conceptual Design, Schematic Design, Design Development, Partial Construction Documents or Other Issuance up to Issued for Construction] are intended to be at that level of development and as such, may be neither complete nor coordinated. The [Construction Manager, Contractor, Design/Builder] is responsible for complete and coordinated pricing [and execution] of the Work, and shall include items necessary for the proper execution and completion of the Work, as shown, specified, reasonably inferred or required for a complete Project. For Work of designated design, systems, assemblies, components and materials shall comply with national, state and local code requirements. The [Construction Manager, Contractor, Design/Builder] shall inform the Owner and Architect, in timely fashion, of any discovered omissions, inaccuracies or errors in the Contract Documents.

ISSUANCES		
No.	Drawing Issue Description	Date
1	DESIGN DEVELOPMENT	3/18/20

GADOE CODE: 5066  
FTE - 450  
EXISTING IU - 38  
PROPOSED IU - 33

**BARACK & MICHELLE OBAMA ACADEMY**



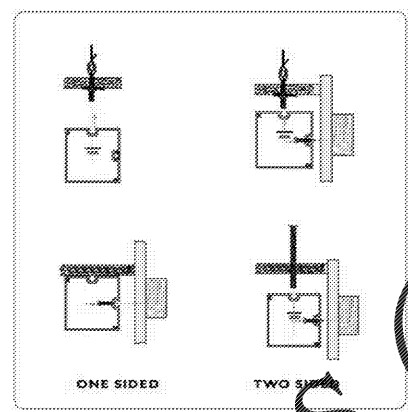
970 Martin St SE, Atlanta, GA 30315  
ATLANTA PUBLIC SCHOOLS

**CEILING DETAILS**

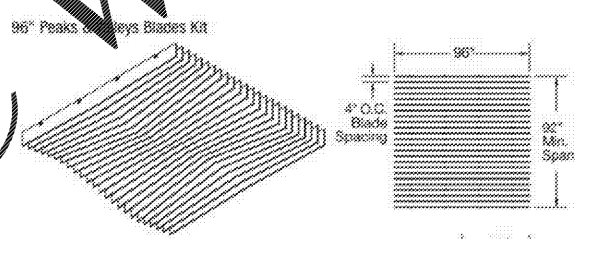
ROBERT A. JUST	20190109
Principal/Designer	Project No.
S. TARGHAN	031820
Project Manager	Date
B. FERREN	
Project Architect	
V. MOGWANJA	
Staff Architect	
B. FERREN / G. HAHN	
Interior Design	

**A5.16**

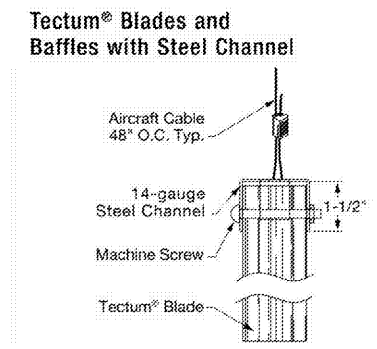
www.LDILine.com



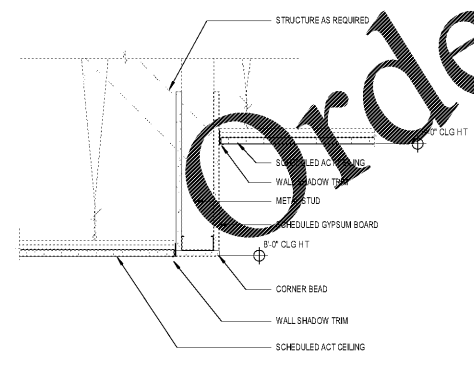
8 CEILING DETAILS @ SURFACE MOUNT T-BAR  
AS.16 SCALE: 1"=1'-0"



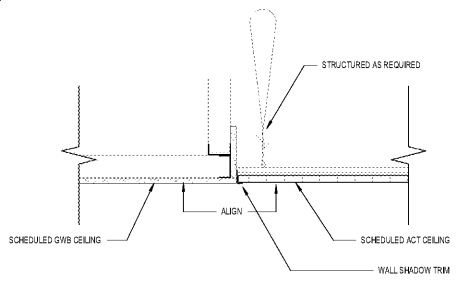
7 CEILING DETAILS @ FELTWORKS BLADES - PEAKS & VALLEYS KITS  
AS.16 SCALE: 1"=1'-0"



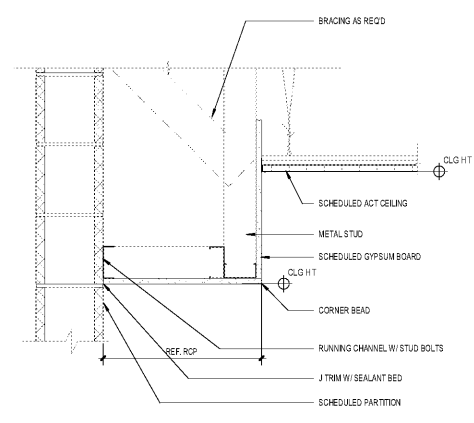
6 CEILING DETAILS @ TECTUM BLADES AND BAFFLES W/ STEEK CHANNEL  
AS.16 SCALE: 1"=1'-0"



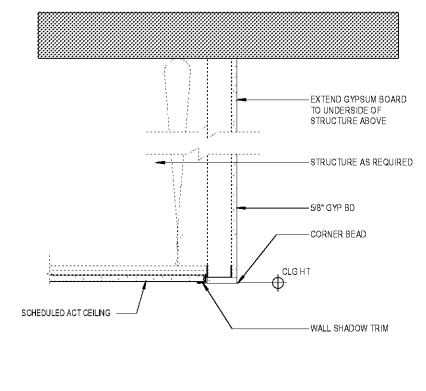
5 CEILING DETAIL @ ACT TO ACT CEILING  
AS.16 SCALE: 1 1/2"=1'-0"



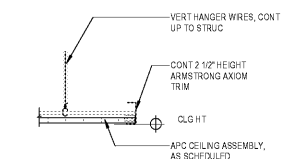
4 CEILING DETAIL @ ACT TO GWB  
AS.16 SCALE: 1 1/2"=1'-0"



3 CEILING DETAIL @ TYP. SOFFIT  
AS.16 SCALE: 1 1/2"=1'-0"



2 CEILING DETAIL @ ACT TO SLAB  
AS.16 SCALE: 1 1/2"=1'-0"



1 CEILING DETAILS @ AXIOM TRIM DETAIL  
AS.16 SCALE: 1 1/2"=1'-0"

PROJECT NUMBER: 20190109 PROJECT NAME: BARACK & MICHELLE OBAMA ACADEMY  
FILED: H:\ARCHITECTURE\PROJECTS\2019\190109\_Barack and Michelle Obama Central\_Terran  
02133.rvt  
3/17/2020 6:49:49 PM