

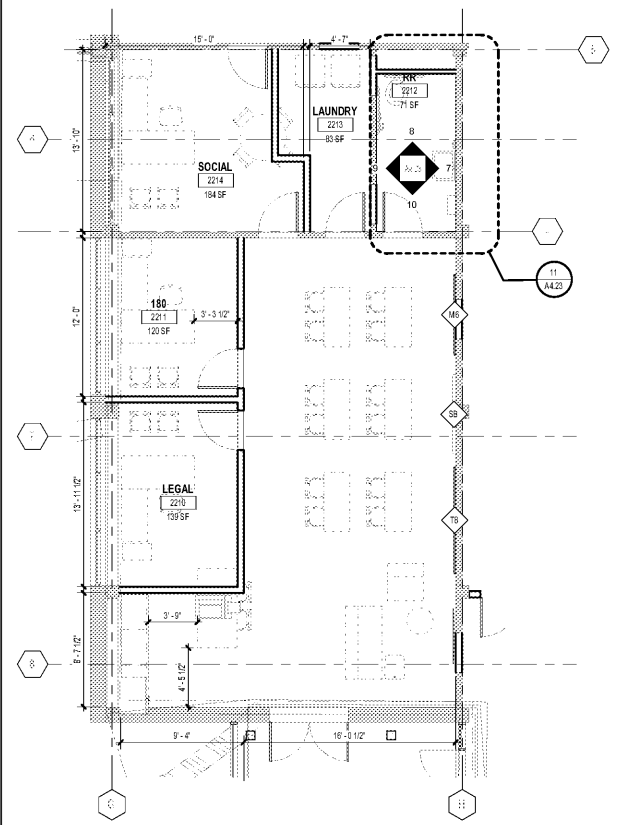
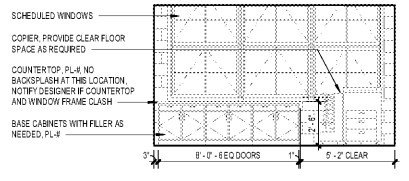
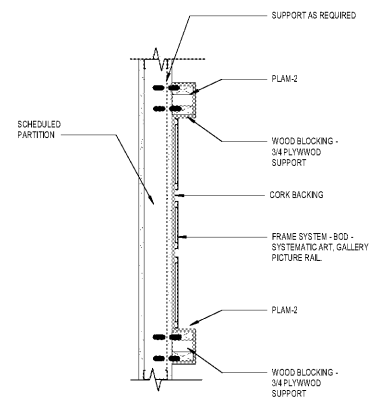


SCOPE DOCUMENTS

The Contract Documents Issued for [Conceptual Design, Schematic Design, Design Development, Partial Construction Documents or Other Issuance up to Issued for Construction] are intended to be at that level of development and as such, may be neither complete nor coordinated. The [Construction Manager, Contractor, Design/Builder] is responsible for complete and coordinated pricing [and execution] of the Work, and shall include items necessary for the proper execution and completion of the Work, as shown, specified, reasonably inferred or required for a complete Project. For Work of obligated design, systems, assemblies, components and materials shall comply with national, state and local code requirements. The [Construction Manager, Contractor, Design/Builder] shall inform the Owner and Architect, in timely fashion, of any discovered omissions, inconsistencies or errors in the Contract Documents.

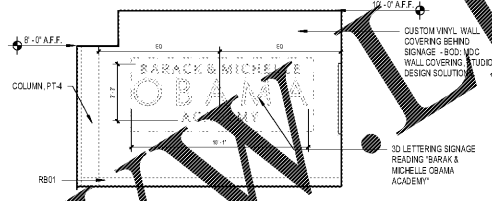
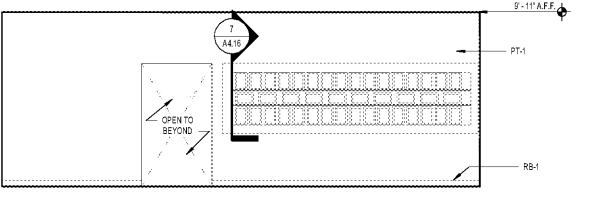
ISSUANCES		
No.	Drawing Issue Description	Date
1	LOC SUBMISSION	11/14/19
2	DESIGN DEVELOPMENT	3/18/20

FURNITURE LEGEND	
CFCI	
T#	TACK BOARD - SURFACE MOUNTED - (4'-0" H x # 0"L)
M#	MARKER BOARD - SURFACE MOUNTED - (4'-0" H x # 0"L)
G#	TACK BOARD - SURFACE MOUNTED - (8'-0" W x 1'-6" D x 2'-6" H)
OFOI	
WC	WARDROBE CLOSET - (3'-0" W x 2'-0" D x 7'-6" H)
CR	COAT RACK (7'-4" W x 1'-0" L)
SB	SMART BOARD
TD	TEACHER'S DESK
SH	SHELVING - (3'-0" W x 1'-3" D x 2'-6" H)
SC	STORAGE CLOSET - (3'-0" W x 2'-0" D x 7'-6" H)
BC	BOOKCASE - (3'-0" W x 1'-0" D x 3'-0" H)



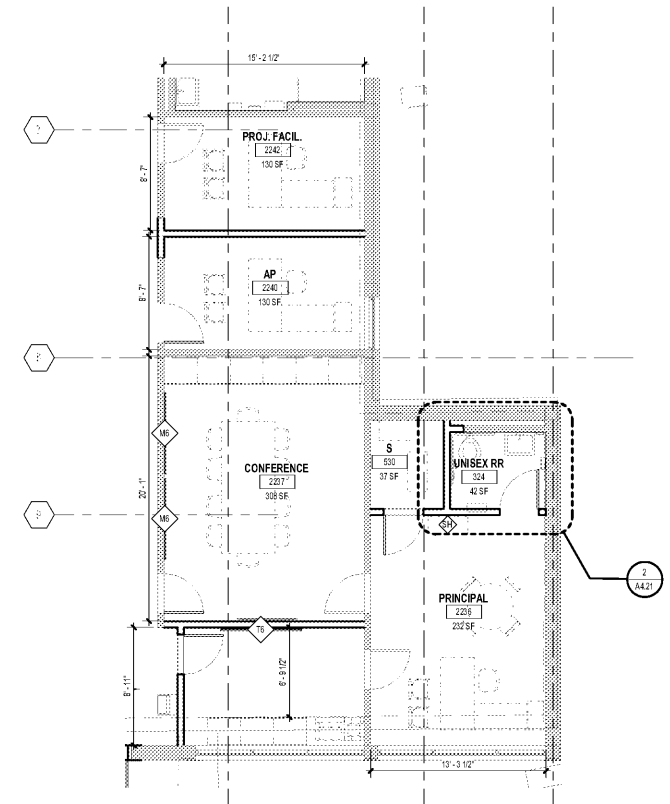
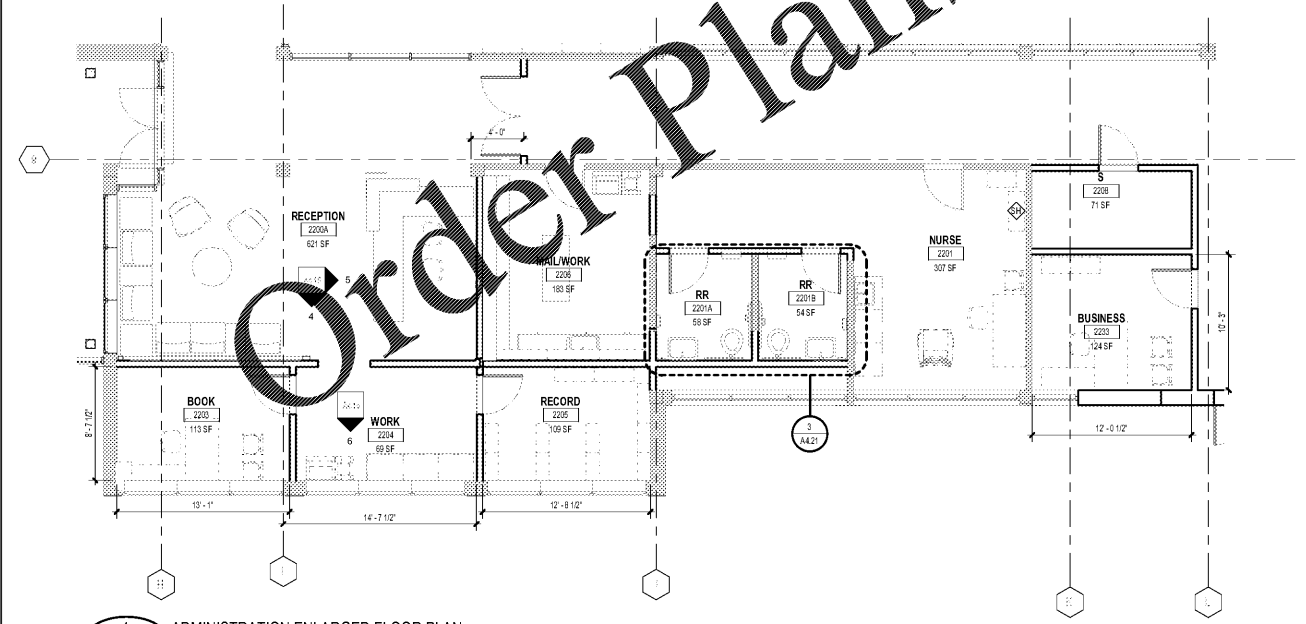
6 ELEVATION @ RECEPTION 2200A
A4.16 SCALE: 1/4" = 1'-0"

7 CASEWORK DETAIL @ RECEPTION PICTURE FRAMES
A4.16 SCALE: 1" = 1'-0"



4 ELEVATION @ RECEPTION 2200A
A4.16 SCALE: 1/4" = 1'-0"

5 ELEVATION @ RECEPTION 2200A
A4.16 SCALE: 1/4" = 1'-0"



GADOE CODE: 5066
FTE - 450
EXISTING IU - 38
PROPOSED IU - 33

BARACK & MICHELLE OBAMA ACADEMY



970 Martin St SE, Atlanta, GA 30315

ATLANTA PUBLIC SCHOOLS

ENLARGED PLANS & DETAILS - ADMINISTRATION

ROBERT A. JUST	2019/01/09
Principal/Designer	Project No.
S. TARRIHAN	03/18/20
Project Manager	Date
B. FERREN	
Project Architect	
G. HAHN / K. LANGUB	
Staff Architect	
B. FERREN / G. HAHN	
Interior Design	

A4.16

PROJECT NUMBER: 20190109 PROJECT NAME: BARACK & MICHELLE OBAMA ACADEMY
FILED: H:\ARCHITECTURE\CENTER FOR CONNECTIVE ARCHITECTURE\BOD\Barack and Michelle Obama Central_Terran
02133.rvt
3/17/2020 6:47:56 PM