



**SCOPE DOCUMENTS**  
The Contract Documents issued for Conceptual Design, Schematic Design, Design Development, Partial Construction Documents or Other Issuance up to Issued for Construction are intended to be at that level of development and as such, may be neither complete nor coordinated. The [Construction Manager, Contractor, Design/Builder] is responsible for complete and coordinated pricing [and execution] of the Work, and shall include items necessary for the proper execution and completion of the Work, as shown, specified, reasonably inferred or required for a complete Project. For Work of integrated design, systems, assemblies, components and materials shall comply with all national, state and local code requirements. The [Construction Manager, Contractor, Design/Builder] shall inform the Owner and Architect, in timely fashion, of any discovered omissions, inconsistencies or errors in the Contract Documents.

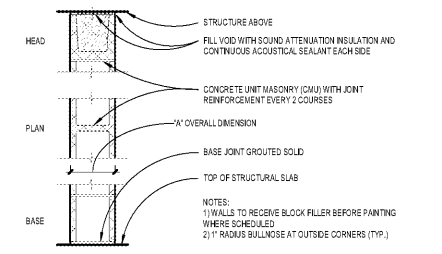
**ISSUANCES**

No.	Drawing Issue Description	Date
1	DESIGN DEVELOPMENT	3/18/20

### CONCRETE MASONRY UNIT (CMU) PARTITIONS (NON-LOAD BEARING)

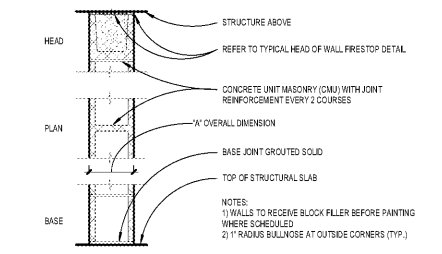
#### CMU GENERAL NOTES

- LIMITING HEIGHT PROVIDED IN PARTITION SCHEDULES IS ABBREVIATED AND MAY NOT ADDRESS ALL CONDITIONS OF THE PROJECT. THIS INFORMATION IS PROVIDED FOR USE AS A GUIDE AND DOES NOT ALTERNATE THE CONTRACTOR FROM PROVIDING WALL ASSEMBLIES THAT MEET THE DESIGN CRITERIA FOR EACH CONDITION. THE INFORMATION NOTED IS BASED ON UNREINFORCED INTERIOR MASONRY PARTITIONS PER BC 2008, SECTION 2102 EMPirical DESIGN OF MASONRY, TABLE 2102.4.1. SEE STRUCTURAL DRAWINGS FOR ALL REINFORCED MASONRY PARTITIONS.
  - SOUND TRANSMISSION CLASS (STC) INDICATED IS BASED ON INFORMATION FROM MASONRY DESIGN AND DETAILING. #FTH METHOD FIGURES 8-60, 8-61 & 8-62 ADAPTED FROM THE MASONRY SOCIETY'S STANDARD METHOD FOR DETERMINING THE SOUND TRANSMISSION CLASS RATING FOR MASONRY UNITS. STC INDICATED ARE THE LOW END PUBLISHED RANGE BASED ON THE CMU DENSITY OF 80-100 LBS/CF FOR LIGHTWEIGHT, IF NORMAL OR MEDIUM WEIGHT MASONRY IS USED, CONTRACTOR SHALL SUBMIT DATA COMPARING THAT IT CAN BE MET.
  - STC CLASS RATINGS FOR GROUT-FILLED AND SAND-FILLED UNITS REQUIRE THAT THE MATERIALS COMPLETELY FILL ALL VOIDS IN AND AROUND THE UNITS AND ARE BASED ON GROUT DENSITY OF 140 LBS/CF AND SAND DENSITY OF 100 LBS/CF.
  - STC CLASS RATINGS BASED ON MINIMUM PERCENT SOLID THICKNESS OF SPICAL UNITS. SOLID THICKNESS IS 75% SOLID, 10" x 8" SOLID, 10" x 8" SOLID AND 12" x 8" SOLID. CONTRACTOR TO VERIFY THAT CMU MANUFACTURER MEETS OR EXCEEDS THESE REQUIREMENTS.
  - ALL PARTITIONS SHALL EXTEND TO AND TERMINATE AT THE FINISH FLOOR STRUCTURE ABOVE UNLESS NOTED OTHERWISE. COORDINATE STRUCTURAL DEFLECTION REQUIREMENTS WITH ARCHITECTURAL DETAILING TO ACCOMMODATE MOVEMENT.
  - SCHEDULED PARTITIONS SHALL BE PERMANENTLY IDENTIFIED TO SPACES EITHER AS REQUIRED BY CODE OR WITH 2" HIGH LETTERING OR VALUE CONTAINING THE BACKGROUND AND SPACED NO MORE THAN 1" FEET ON CENTER. ALL PARTITIONS SHALL BE IDENTIFIED WITH 1" HIGH FIRE AND SMOKE BARRIER - PROTECT ALL FINISHES WHERE THESE REQUIREMENTS CONFLICT WITH REQUIREMENTS BY LOCAL AUTHORITY HAVE JURISDICTION TO ENFORCE THESE REQUIREMENTS BY LOCAL AUTHORITY SHALL GOVERN.
  - WHERE SPECIFIED, PARTITIONS SHALL BE IDENTIFIED AS FOLLOWS: LIGHTWEIGHT (LW) - CMU DENSITY LESS THAN 100 LBS/CF; NORMAL (N) - CMU DENSITY 100-120 LBS/CF; NORMAL WEIGHT (NW) - CMU DENSITY GREATER THAN 120 LBS/CF.
  - CONTRACTOR SHALL OBTAIN CERTIFICATION FOR THE FIRE RATING OF THE CMU FROM THE MANUFACTURER. BASED ON THE AGGREGATE MATERIAL USED AND EQUIVALENT THICKNESS. FIRE RATING BASED ON BC 2008, TABLE 7.1.1 (BASED ON CALCULATED) EQUIVALENT THICKNESS (EQUIVALENT FACE-TO-FACE (INCHES))
- |                                       | 4 HOUR | 3 HOUR | 2 HOUR | 1 HOUR |
|---------------------------------------|--------|--------|--------|--------|
| CONCRETE MASONRY UNITS                |        |        |        |        |
| EXPANDED SLAG OR PUMICE               | 4.7    | 4.0    | 3.2    | 2.1    |
| EXPANDED CLAY, SHALE OR SLATE         | 5.1    | 4.4    | 3.6    | 2.6    |
| LIMESTONE, CONDERS OR AIR-COOLED SLAG | 5.9    | 5.0    | 4.0    | 2.7    |
| CALCERIOUS OR SILICEOUS GRAVEL        | 6.2    | 5.3    | 4.2    | 2.8    |
- ALL REINFORCED CMU PARTITIONS TO BE DESIGNED AND DETAILED BY THE STRUCTURAL ENGINEER. REFERENCE STRUCTURAL DRAWINGS FOR ALL REINFORCING REQUIREMENTS AND DETAILS. COORDINATE U.L. DESIGN DETAILS FOR PARTITION TERMINATIONS AT STRUCTURE ABOVE AND CONTROL JOINTS WITH STRUCTURAL DETAILS.
  - EQUIVALENT THICKNESS IS THE SOLID THICKNESS THAT WOULD BE OBTAINED IF THE SAME AMOUNT OF MASONRY CONTAINED IN A HOLLOW UNIT WERE RECAST WITHOUT CORE HOLES. THE EQUIVALENT THICKNESS OF A HOLLOW UNIT IS EQUAL TO THE PERCENTAGE OF SOLID (SEE NOTE NO. 4 ABOVE) TIMES THE ACTUAL THICKNESS OF THE UNIT. EQUIVALENT THICKNESS FOR HOLLOW UNITS WITH ALL CELLS COMPLETELY FILLED WITH APPROVED FILL MATERIALS INCLUDES: SAND, PEA GRAVEL, CRUSHED STONE, OR SLAG THAT MEETS ASTM C 333 (REF. 3) - 3/8" MAX. SQUARE, EXPANDED SHALE, EXPANDED CLAY, EXPANDED SLATE, EXPANDED SLAG, EXPANDED FLG ASH, OR CONCRETE THAT MEETS ASTM C 331 (REF. 4) OR C 333 (REF. 5) OR PERLITE OR VERMICULITE THAT MEETS ASTM C 548 AND C 516 (REFS. 8 & 9) RESPECTIVELY. CONTRACTOR TO VERIFY THAT THE CMU MANUFACTURER MEETS OR EXCEEDS THE MINIMUM EQUIVALENT THICKNESS NOTED IN PARTITION TABLE.
  - SPACE MASONRY CONTROL JOINTS AT THE LESSER OF LENGTH TO HEIGHT RATIO + 1.6 OR 20'-0" IN ADDITION PROVIDE CONTROL JOINTS AT LOCATIONS OF STRESS CONCENTRATIONS SUCH AS:
    - AT CHANGES IN WALL HEIGHT
    - AT CHANGES IN WALL THICKNESS, SUCH AS AT PIPE AND DUCT CHASES AND PILASTERS
    - AT ABOVE MOVEMENT JOINTS IN FOUNDATIONS AND FLOORS
    - AT (BELOW) MOVEMENT JOINTS IN ROOFS AND FLOORS THAT BEAR ON WALL
    - NEAR ONE OR BOTH SIDES OF DOOR AND WINDOW OPENINGS, TYPICALLY ONE SIDE OF OPENING LESS THAN 6'-0" WIDE AND AT BOTH SIDES OF AN OPENING GREATER THAN 6'-0" WIDE. CONTROL JOINTS MAY BE OMITTED IF ADEQUATE TENSILE REINFORCEMENT IS PLACED ABOVE AND BELOW WALL OPENINGS IF REVIEWED AND APPROVED BY STRUCTURAL ENGINEER.
- CMU MASONRY CONTROL JOINT SHORT-TERM TENSILE STRENGTH DIAGRAM** WITH A DISTANCE EQUAL TO HALF THE CONTROL JOINT SPACING.
- 



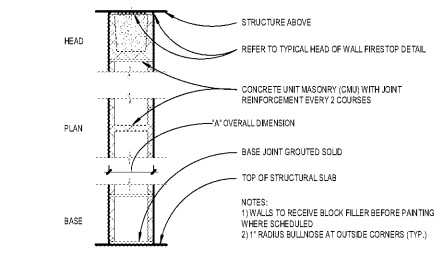
#### 0M NON-RATED CONCRETE MASONRY PARTITION NON-LOAD BEARING

DESIGNATION				"S" MODIFIER			
NO.	"A" DIM.	FIRE TEST	LIMITING HEIGHT (NOTE 1)	EQUIVALENT THICKNESS (NOTE 1)	DESIG. NATION	STC CLASS (NOTE 2 & 4)	CELL FILL MATERIAL (NOTE 3)
0M04	3'-0"	NA	12'-0" (NOTE 9)	2.67"	S1	44	LIGHT HOLLOW
				3.625"	S2	45	LIGHT GROUT
				3.625"	S3	45	LIGHT SAND
0M08	5'-0"	NA	18'-0" (NOTE 9)	3.09"	S1	44	LIGHT HOLLOW
				5.625"	S2	40	LIGHT GROUT
				5.625"	S3	47	LIGHT SAND
0M09	7'-0"	NA	24'-0" (NOTE 9)	4.04"	S1	45	LIGHT HOLLOW
				7.625"	S2	53	LIGHT GROUT
				7.625"	S3	50	LIGHT SAND
0M20	11'-0"	NA	36'-0" (NOTE 9)	5.69"	S1	47	LIGHT HOLLOW
				11.625"	S2	60	LIGHT GROUT
				11.625"	S3	55	LIGHT SAND



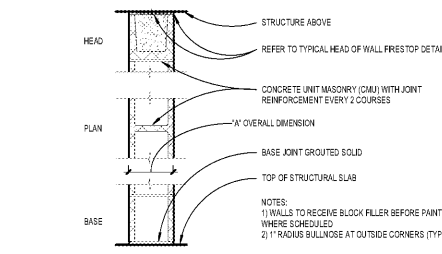
#### 2M 2-HOUR RATED CONCRETE MASONRY PARTITION NON-LOAD BEARING

DESIGNATION				"S" MODIFIER			
NO.	"A" DIM.	FIRE TEST	LIMITING HEIGHT (NOTE 1)	EQUIVALENT THICKNESS (NOTE 1)	DESIG. NATION	STC CLASS (NOTE 2 & 4)	CELL FILL MATERIAL (NOTE 3)
2M00	5'-0"	(B)	18'-0" (NOTE 9)	5.625"	S2	46	LIGHT GROUT
				5.625"	S3	47	LIGHT SAND
				5.625"	S1	45	LIGHT HOLLOW
2M08	7'-0"	(B)	24'-0" (NOTE 9)	7.625"	S2	53	LIGHT GROUT
				7.625"	S3	50	LIGHT SAND
				7.625"	S1	47	LIGHT HOLLOW
2M20	11'-0"	(B)	36'-0" (NOTE 9)	5.69"	S1	47	LIGHT HOLLOW
				11.625"	S2	60	LIGHT GROUT
				11.625"	S3	55	LIGHT SAND



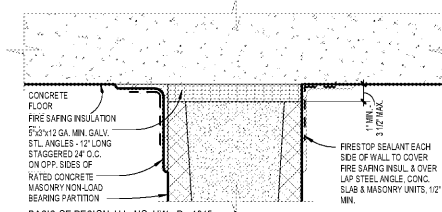
#### 3M 3-HOUR RATED CONCRETE MASONRY PARTITION NON-LOAD BEARING

DESIGNATION				"S" MODIFIER			
NO.	"A" DIM.	FIRE TEST	LIMITING HEIGHT (NOTE 1)	EQUIVALENT THICKNESS (NOTE 1)	DESIG. NATION	STC CLASS (NOTE 2 & 4)	CELL FILL MATERIAL (NOTE 3)
3M00	5'-0"	(B)	18'-0" (NOTE 9)	5.625"	S2	46	LIGHT GROUT
				5.625"	S3	47	LIGHT SAND
				5.625"	S1	45	LIGHT HOLLOW
3M08	7'-0"	(B)	24'-0" (NOTE 9)	7.625"	S2	53	LIGHT GROUT
				7.625"	S3	50	LIGHT SAND
				7.625"	S1	47	LIGHT HOLLOW
3M20	11'-0"	(B)	36'-0" (NOTE 9)	5.69"	S1	47	LIGHT HOLLOW
				11.625"	S2	60	LIGHT GROUT
				11.625"	S3	55	LIGHT SAND

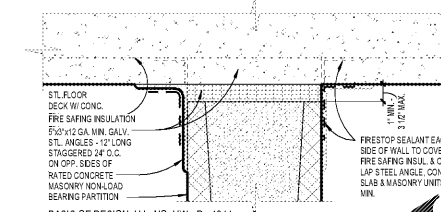


#### 4M 4-HOUR RATED CONCRETE MASONRY PARTITION NON-LOAD BEARING

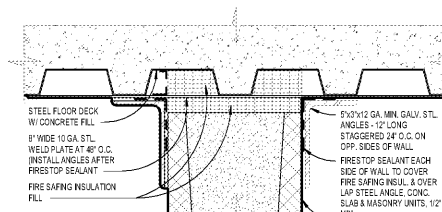
DESIGNATION				"S" MODIFIER			
NO.	"A" DIM.	FIRE TEST	LIMITING HEIGHT (NOTE 1)	EQUIVALENT THICKNESS (NOTE 1)	DESIG. NATION	STC CLASS (NOTE 2 & 4)	CELL FILL MATERIAL (NOTE 3)
4M00	7'-0"	(B)	24'-0" (NOTE 9)	7.625"	S2	53	LIGHT GROUT
				7.625"	S3	50	LIGHT SAND
				7.625"	S1	47	LIGHT HOLLOW
4M20	11'-0"	(B)	36'-0" (NOTE 9)	11.625"	S2	60	LIGHT GROUT
				11.625"	S3	55	LIGHT SAND
				11.625"	S1	47	LIGHT HOLLOW



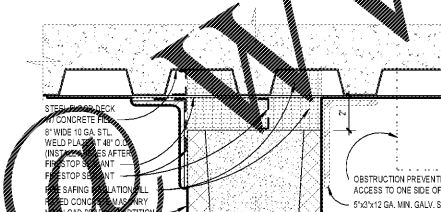
1 CMU HEAD WALL DETAIL AT CONCRETE - 2 HR. SCALE: 3" = 1'-0"



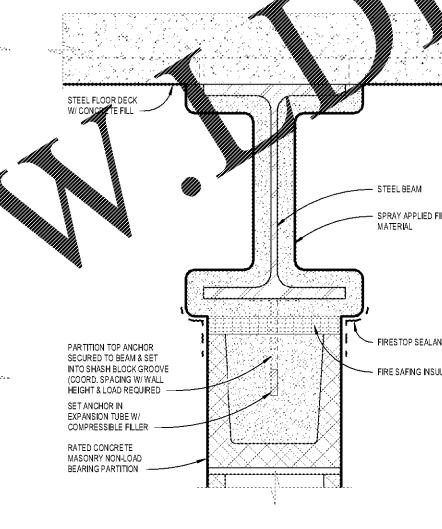
2 CMU HEAD WALL DETAIL AT DECK A - 2 HR. SCALE: 3" = 1'-0"



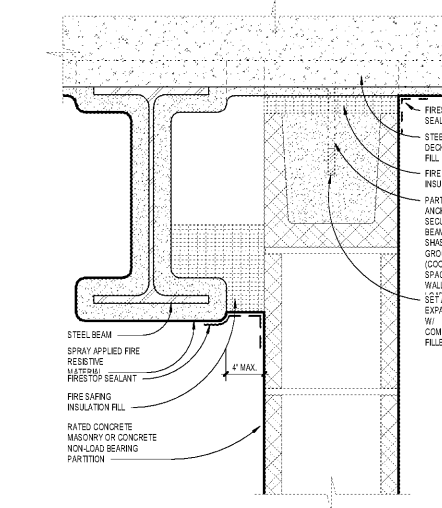
3 CMU HEAD WALL DETAIL AT DECK B - 2 HR. SCALE: 3" = 1'-0"



4 CMU HEAD WALL DETAIL AT DECK B - I SIDE - 2HR. SCALE: 3" = 1'-0"

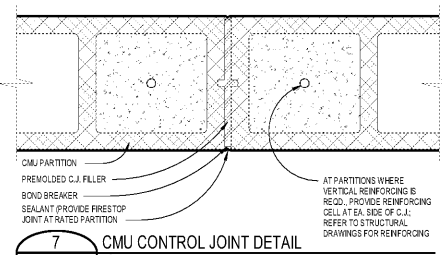


5 CMU HEAD WALL DETAIL AT BEAM - 1 & 2 HR. SCALE: 3" = 1'-0"



6 CMU HEAD WALL DET. AT OFF-SET BEAM - 1&2 HR. SCALE: 3" = 1'-0"

CMU PARTITIONS



7 CMU CONTROL JOINT DETAIL. SCALE: 3" = 1'-0"

Order Plans

GADOE CODE: 5066  
FTE - 450  
EXISTING IU - 38  
PROPOSED IU - 33

BARACK & MICHELLE OBAMA ACADEMY



970 Martin St SE, Atlanta, GA 30315

ATLANTA PUBLIC SCHOOLS

INTERIOR PARTITIONS (CMU)

ROBERT A. JUST	201910109
Principal/Designer	Project No.
S. TARKHAN	03/18/20
Project Manager	Date
B. FERREN	
Project Architect	
E. SAADAT	
Staff Architect	
B. FERREN / G. HAHN	
Interior Design	

A3.34