



SCOPE DOCUMENTS

The Contract Documents issued for Conceptual Design, Schematic Design, Design Development, Partial Construction Documents or Other Issuance up to Issued for Construction are intended to be at that level of development and as such, may be neither complete nor coordinated. The [Construction Manager, Contractor, Design/Builder] is responsible for complete and coordinated pricing [and execution] of the Work, and shall include items necessary for the proper execution and completion of the Work, as shown, specified, reasonably inferred or required for a complete Project. For Work of obligated design, systems, assemblies, components and materials shall comply with national, state and local code requirements. The [Construction Manager, Contractor, Design/Builder] shall inform the Owner and Architect, in timely fashion, of any discovered omissions, inconsistencies or errors in the Contract Documents.

ISSUANCES

No.	Drawing Issue Description	Date
1	DESIGN DEVELOPMENT	3/18/20

GADOE CODE: 5066
FTE - 450
EXISTING IU - 38
PROPOSED IU - 33

BARACK & MICHELLE OBAMA ACADEMY



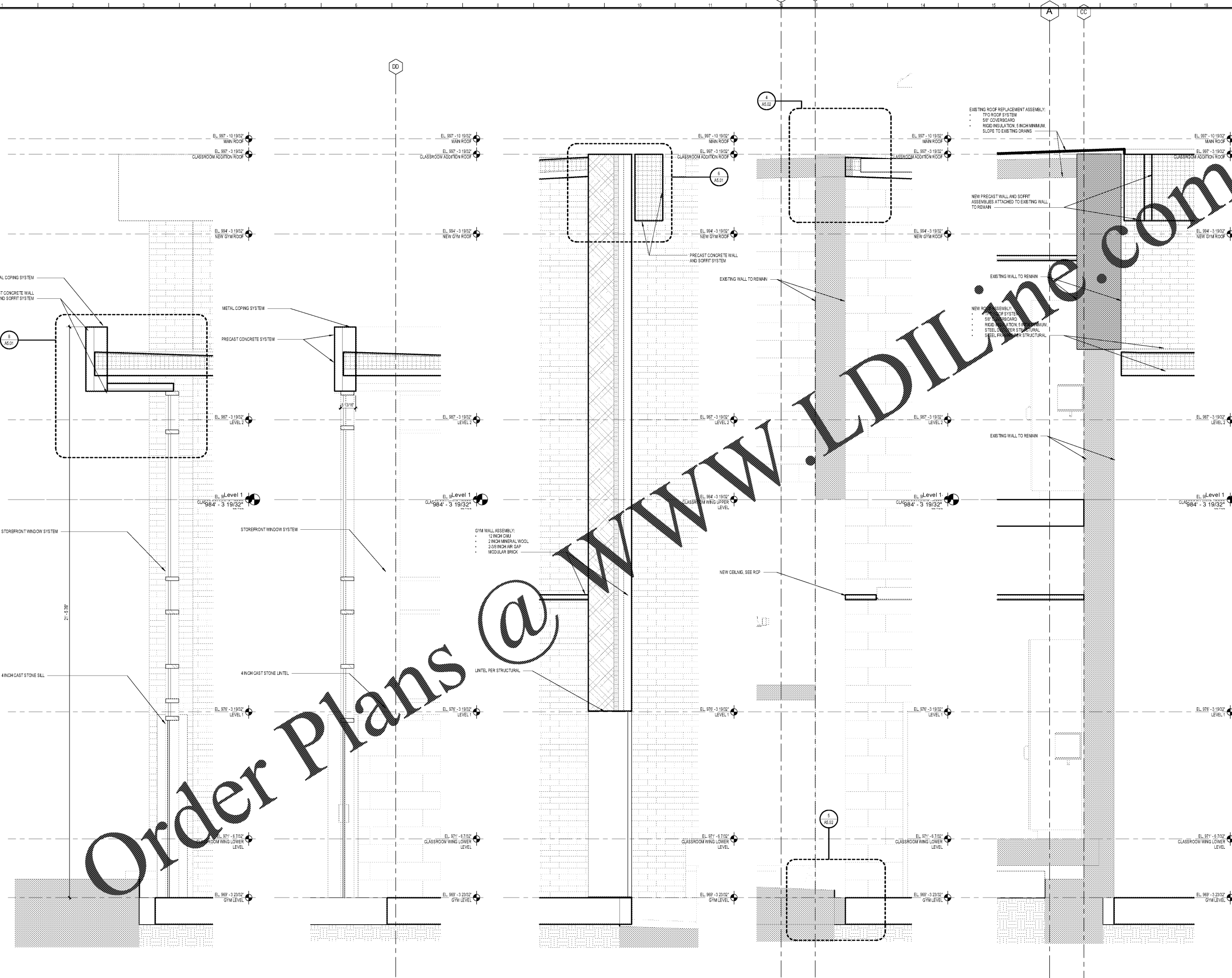
970 Martin St SE, Atlanta, GA 30315

ATLANTA PUBLIC SCHOOLS

WALL SECTIONS- GYM CONNECTION

ROBERT A. JUST 20190109
Principal/Designer
S. TARRIHAN 03/18/20
Project Manager
B. FERREN
Project Architect
M. PARKS
Staff Architect
B. FERREN / G. HAHN
Interior Design

A3.23



5 WALL SECTION- GYM CONNECTION SCALE: 3/4" = 1'-0"
4 WALL SECTION- GYM CONNECTION SCALE: 3/4" = 1'-0"
3 WALL SECTION- GYM CONNECTION SCALE: 3/4" = 1'-0"
2 WALL SECTION- GYM CONNECTION SCALE: 3/4" = 1'-0"
1 WALL SECTION- GYM CONNECTION SCALE: 3/4" = 1'-0"

PROJECT NUMBER: 20190109 PROJECT NAME: BARACK & MICHELLE OBAMA ACADEMY
DATE: 02/13/20
3/17/2020 6:46:53 PM