

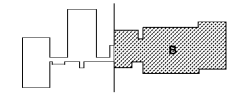


**SCOPE DOCUMENTS**

The Contract Documents Issued for (Conceptual Design, Schematic Design, Design Development, Partial Construction Documents or Other Issuance up to Issued for Construction) are intended to be at that level of development and as such, may be neither complete nor coordinated. The (Construction Manager, Contractor, Design/Builder) is responsible for complete and coordinated pricing (and execution) of the Work, and shall include items necessary for the proper execution and completion of the Work, as shown, specified, reasonably inferred or required for a complete Project. For Work of obligated design, systems, assemblies, components and materials shall comply with national, state and local code requirements. The (Construction Manager, Contractor, Design/Builder) shall inform the Owner and Architect, in timely fashion, of any discovered omissions, inconsistencies or errors in the Contract Documents.

ISSUANCES		
No.	Drawing Issue Description	Date
1	DESIGN DEVELOPMENT	3/18/20

GADOE CODE: 5066  
FTE - 450  
EXISTING IU - 38  
PROPOSED IU - 33



**BARACK & MICHELLE OBAMA ACADEMY**

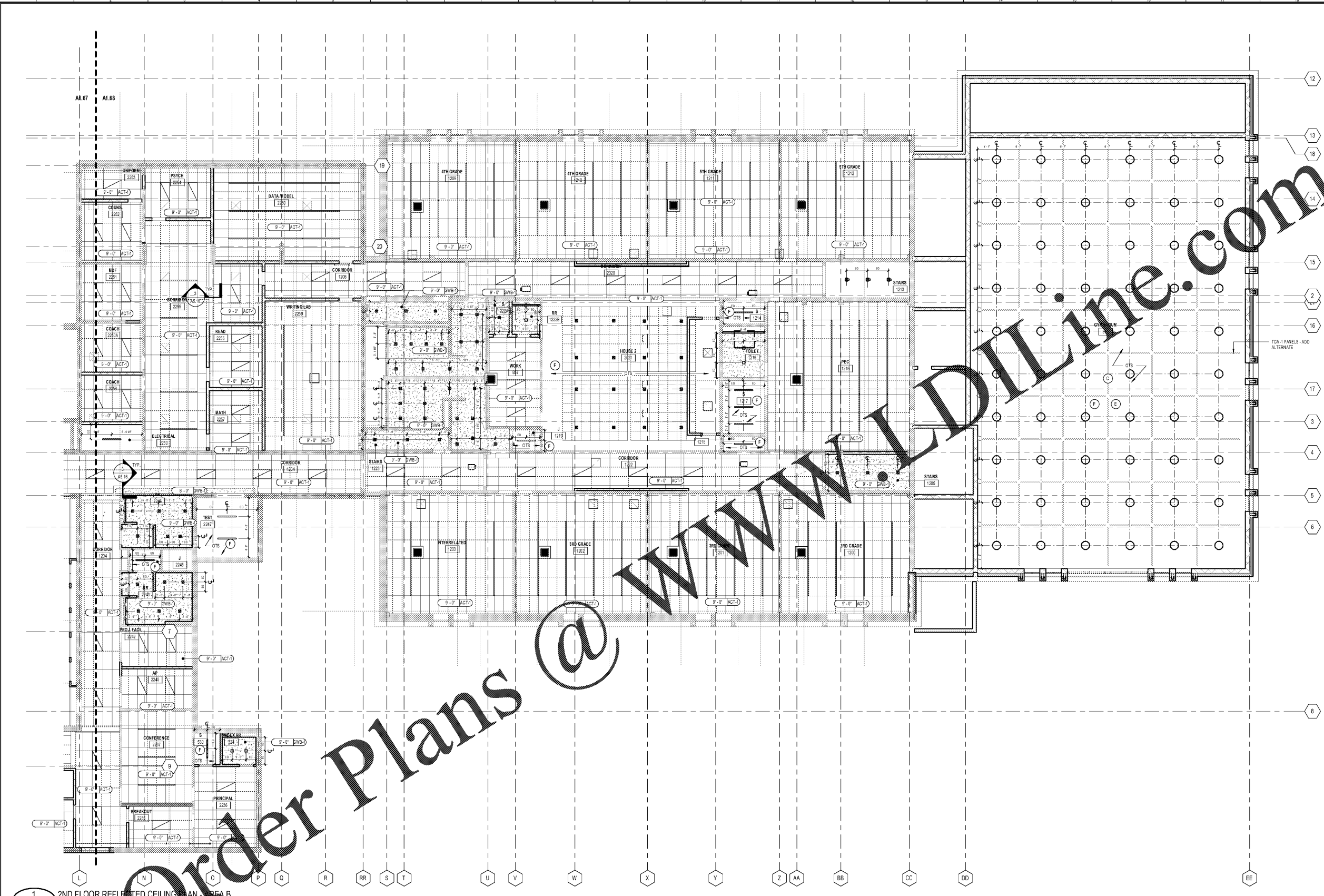


970 Martin St SE, Atlanta, GA 30315  
ATLANTA PUBLIC SCHOOLS

**2ND FLOOR REFLECTED CEILING PLAN - AREA B**

Principal Designer <b>ROBERT A. JUST</b>	20190109
Project Manager <b>S. TARGHAN</b>	03/18/20
Project Architect <b>B. FERREN</b>	
Staff Architect <b>G. HAHN / V. MOGWANJA</b>	
Interior Designer <b>B. FERREN / G. HAHN</b>	

**A1.68**



**1 2ND FLOOR REFLECTED CEILING PLAN - AREA B**  
SCALE: 1/8" = 1'-0"

**REFLECTED CEILING PLAN GENERAL NOTES**

- ALL CEILING HEIGHTS TO MATCH EXISTING AND CONTRACTOR MUST VERIFY J.U.N.O.
- TURF SLAB 3MM POLYESTER FELT ACOUSTIC CEILING Baffles AT 9' AFFIN EXPOSED CEILING.
- REFERENCE ELEVATION FOR HEIGHTS, LOCATIONS, SPACING OF WALL SCONCE LIGHTING
- ADD ALTERNATE TECTUM BAFFLE CEILING AT THE LOCATION, 800 ARMSTRONG, TECTUM BLADES AND Baffles, 23 3/4" X 48" - CUSTOM COLORS.
- DECORATIVE RESIN PANELS, ACR-1 AND 9" CYLINDER PENDANT IN EXPOSED CEILING. RESIN PANELS MOUNTING HEIGHT VARIES. REFER TO ENGINEER DRAWINGS FOR LIGHT FIXTURE INFORMATION.
- PROVIDE K-13 ACOUSTICAL SPRAY AT STRUCTURE. COLOR TO BE SELECTED FROM MANUFACTURER'S FULL RANGE. SEE ADDITIVE ALTERNATE # 8. PAINT
- ALL CEILINGS CALLED OUT TO BE EXPOSED TO BE PT-2 FINISH. PAINT ALL EXPOSED STRUCTURE, DECK, MECHANICAL SYSTEMS ETC. EXCEPT PORTIONS OF SYSTEMS NOT INTENDED TO BE PAINTED PER MANUFACTURER RECOMMENDATION

**REFLECTED CEILING PLAN KEY NOTES**

- TURF SLAB 3MM POLYESTER FELT ACOUSTIC CEILING Baffles AT 9' AFFIN EXPOSED CEILING.
- REFERENCE ELEVATION FOR HEIGHTS, LOCATIONS, SPACING OF WALL SCONCE LIGHTING
- ADD ALTERNATE TECTUM BAFFLE CEILING AT THE LOCATION, 800 ARMSTRONG, TECTUM BLADES AND Baffles, 23 3/4" X 48" - CUSTOM COLORS.
- DECORATIVE RESIN PANELS, ACR-1 AND 9" CYLINDER PENDANT IN EXPOSED CEILING. RESIN PANELS MOUNTING HEIGHT VARIES. REFER TO ENGINEER DRAWINGS FOR LIGHT FIXTURE INFORMATION.
- PROVIDE K-13 ACOUSTICAL SPRAY AT STRUCTURE. COLOR TO BE SELECTED FROM MANUFACTURER'S FULL RANGE. SEE ADDITIVE ALTERNATE # 8. PAINT
- ALL CEILINGS CALLED OUT TO BE EXPOSED TO BE PT-2 FINISH. PAINT ALL EXPOSED STRUCTURE, DECK, MECHANICAL SYSTEMS ETC. EXCEPT PORTIONS OF SYSTEMS NOT INTENDED TO BE PAINTED PER MANUFACTURER RECOMMENDATION

**RCP LEGEND**

LIGHT FIXTURES	
	SURFACE MOUNTED FIXTURE
	EXIT SIGN WALL MOUNTED
	24 EMERGENCY FIXTURE, PARABOLIC LENS
	24 EMERGENCY FIXTURE, PARABOLIC LENS
	24 LAY-IN FIXTURE, PARABOLIC LENS
	24 LAY-IN FIXTURE, PARABOLIC LENS
	24 LAY-IN FIXTURE, ACRYLIC LENS
	24 LAY-IN FIXTURE, ACRYLIC LENS

	WALL MOUNT SCONCE LIGHT FIXTURE
	STRIP FLUORESCENT FIXTURE
	TRACK LIGHTING
	WALL MOUNTED FIXTURE, SCONCE
	WALL MOUNTED FIXTURE, LINEAR
	POLE MOUNTED LIGHT FIXTURE
	POLE MOUNTED LIGHT FIXTURE
	EXIT SIGN CEILING MOUNTED
	RECESSED DOWN LIGHT - DIRECTIONAL

	SUSPENDED CAN FIXTURE
	PENDANT MOUNTED FIXTURE
	SUSPENDED RING LIGHTING FIXTURE
	24 EMERGENCY FIXTURE, ACRYLIC LENS
	RECESSED DOWN LIGHT - ROUND
	ACCESS PANEL
	RETURN AIR DIFFUSER
	SUPPLY AIR DIFFUSER
	LINEAR SLOT DIFFUSER

PROJECT NUMBER: 20190109 PROJECT NAME: BARACK & MICHELLE OBAMA ACADEMY  
DATE: 02/13/20  
3/17/2020 6:45:06 PM