



SCOPE DOCUMENTS

The Contract Documents Issued for (Conceptual Design, Schematic Design, Design Development, Partial Construction Documents or Other Issuance up to Issued for Construction) are intended to be at that level of development and as such, may be neither complete nor coordinated. The (Construction Manager, Contractor, Design/Builder) is responsible for complete and coordinated pricing (and execution) of the Work, and shall include items necessary for the proper execution and completion of the Work, as shown, specified, reasonably inferred or required for a complete Project. For Work of designed design, systems, assemblies, components and materials shall comply with national, state and local code requirements. The (Construction Manager, Contractor, Design/Builder) shall inform the Owner and Architect, in timely fashion, of any discovered omissions, inaccuracies or errors in the Contract Documents.

ISSUANCES		
No.	Drawing Issue Description	Date
1	DESIGN DEVELOPMENT	3/18/20

RCP LEGEND		
LIGHT FIXTURES		
	SURFACE MOUNTED FIXTURE	WALL MOUNT SCIENCE LIGHT FIXTURE
	EXIT SIGN WALL MOUNTED	STRIP FLUORESCENT FIXTURE
	2x4 EMERGENCY FIXTURE, PARABOLIC LENS	TRACK LIGHTING
	2x2 EMERGENCY FIXTURE, PARABOLIC LENS	WALL MOUNTED FIXTURE, SCIENCE
	2x4 LAY-IN FIXTURE, PARABOLIC LENS	WALL MOUNTED FIXTURE, LINEAR
	2x2 LAY-IN FIXTURE, PARABOLIC LENS	POLE MOUNTED LIGHT FIXTURE
	2x4 LAY-IN FIXTURE, ACRYLIC LENS	2x4 EMERGENCY FIXTURE, ACRYLIC LENS
	2x2 LAY-IN FIXTURE, ACRYLIC LENS	POLE MOUNTED LIGHT FIXTURE
	2x4 LAY-IN FIXTURE, ACRYLIC LENS	EXIT SIGN CEILING MOUNTED
	2x2 LAY-IN FIXTURE, ACRYLIC LENS	RECESSED DOWN LIGHT - DIRECTIONAL
MECHANICAL FIXTURES		
	SUSPENDED CAN FIXTURE	ACCESS PANEL
	PENDANT MOUNTED FIXTURE	RETURN AIR DIFFUSER
	SUSPENDED RING LIGHTING FIXTURE	SUPPLY AIR DIFFUSER
	2x2 EMERGENCY FIXTURE, ACRYLIC LENS	LINEAR SLOT DIFFUSER
	RECESSED DOWN LIGHT - ROUND	

REFLECTED CEILING PLAN GENERAL NOTES

1. ALL CEILING HEIGHTS TO MATCH EXISTING AND CONTRACT MUST VERIFY

REFLECTED CEILING PLAN KEY NOTES

A. TURF SLAB 9MM POLYESTER FELT ACOUSTIC CEILING BAFFLES AT 8' AFF IN EXPOSED CEILING.

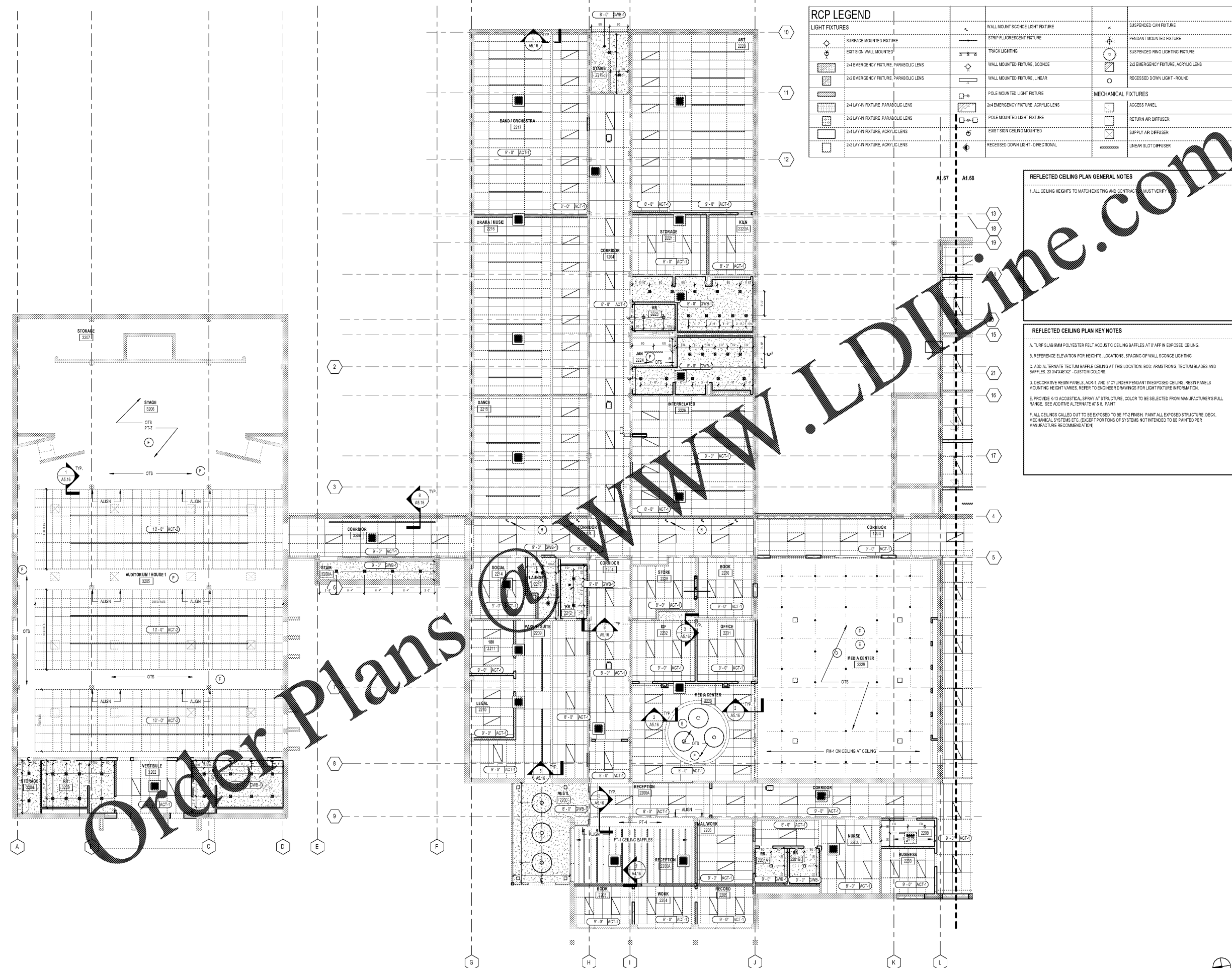
B. REFERENCE ELEVATION FOR HEIGHTS, LOCATIONS, SPACING OF WALL SCIENCE LIGHTING

C. ADD ALTERNATE TECTUM BAFFLE CEILING AT THIS LOCATION. BOB, ARMSTRONG, TECTUM BLADES AND BAFFLES: 23 3/4"X48"X2" - CUSTOM COLORS.

D. DECORATIVE RESIN PANELS, ACR-1 AND 6" CYLINDER PENDANT IN EXPOSED CEILING. RESIN PANELS MOUNTING HEIGHT VARIES. REFER TO ENGINEER DRAWINGS FOR LIGHT FIXTURE INFORMATION.

E. PROVIDE K143 ACOUSTICAL SPRAY AT STRUCTURE. COLOR TO BE SELECTED FROM MANUFACTURER'S FULL RANGE. SEE ACR15 ALTERNATE #1 AS A PAINT.

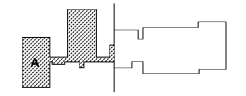
F. ALL CEILING CALLED OUT TO BE EXPOSED TO BE OF A FINISH. PAINT ALL EXPOSED STRUCTURE, DECK, MECHANICAL SYSTEMS ETC. EXCEPT PORTIONS OF SYSTEMS NOT INTENDED TO BE PAINTED PER MANUFACTURE RECOMMENDATION.



1 2ND FLOOR REFLECTED CEILING PLAN - AREA A
SCALE: 1/8" = 1'-0"



GADOE CODE: 5066
FTE - 450
EXISTING IU - 38
PROPOSED IU - 33



BARACK & MICHELLE OBAMA ACADEMY



970 Martin St SE, Atlanta, GA 30315

ATLANTA PUBLIC SCHOOLS

2ND FLOOR REFLECTED CEILING PLAN - AREA A

ROBERT A. JUST	20190109
Principal/Designer	Project No.
S. TARGHAN	03/18/20
Project Manager	Date
B. FERREN	
Project Architect	
G. HAHN / V. MOGWANJA	
Staff Architect	
B. FERREN / G. HAHN	
Interior Design	

A1.67

PROJECT NUMBER: 20190109 PROJECT NAME: BARACK & MICHELLE OBAMA ACADEMY
DATE: 02/13/20
3/17/2020 6:44:57 PM