



**COOPER CARRY**  
THE CENTER FOR CONNECTIVE ARCHITECTURE

191 Peachtree Street NE  
Suite 2400  
Atlanta, GA 30303-1770  
(404) 237-2000  
coopercarry.com

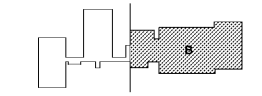
©2018 COOPER CARRY

**SCOPE DOCUMENTS**

The Contract Documents Issued for [Conceptual Design, Schematic Design, Design Development, Partial Construction Documents or Other Issuance up to Issued for Construction] are intended to be at that level of development and as such, may be neither complete nor coordinated. The [Construction Manager, Contractor, Design/Builder] is responsible for complete and coordinated pricing [and execution] of the Work, and shall include items necessary for the proper execution and completion of the Work, as shown, specified, reasonably inferred or required for a complete Project. For Work of delegated design, systems, assemblies, components and materials shall comply with national, state and local code requirements. The [Construction Manager, Contractor, Design/Builder] shall inform the Owner and Architect, in timely fashion, of any discovered omissions, inaccuracies or errors in the Contract Documents.

ISSUANCES		
No.	Drawing Issue Description	Date
1	DESIGN DEVELOPMENT	3/18/20

GADOE CODE: 5066  
FTE - 450  
EXISTING IU - 38  
PROPOSED IU - 33



**BARACK & MICHELLE OBAMA ACADEMY**



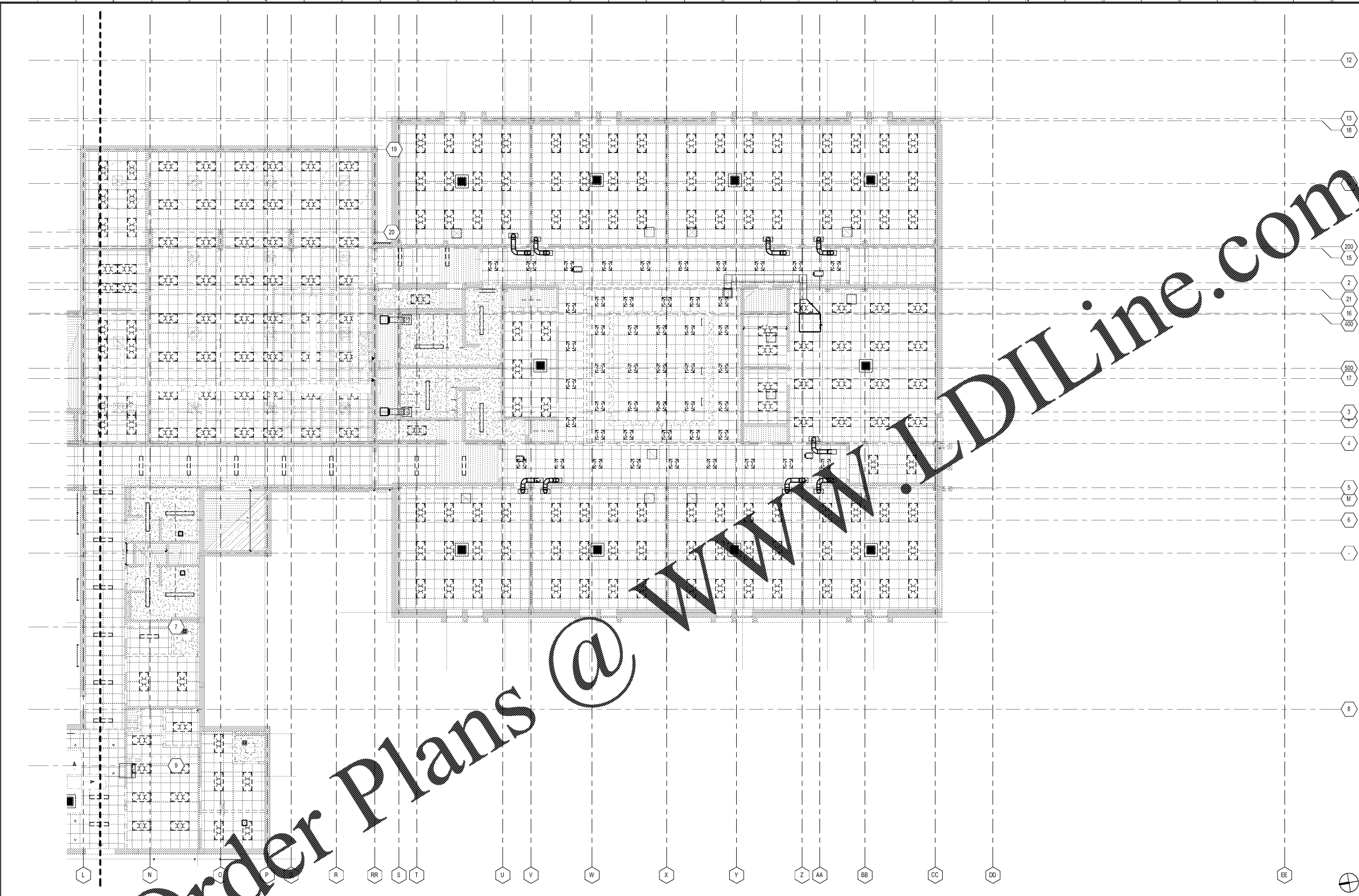
970 Martin St SE, Atlanta, GA 30315  
ATLANTA PUBLIC SCHOOLS

**2ND FLOOR DEMOLITION REFLECTED CEILING PLAN - AREA B**

ROBERT A. JUST 20190109  
Principal/Designer  
S. TARGHAN 03/18/20  
Project Manager  
B. FERREN  
Project Architect  
G. HAHN / V. MOGWANJA  
Staff Architect  
B. FERREN / G. HAHN  
Interior Design

**A1.62**

NOT ISSUED FOR CONSTRUCTION



1  
A1.62  
2ND FLOOR DEMOLISHED REFLECTED CEILING PLAN - AREA B  
SCALE: 1/8" = 1'-0"

RCP LEGEND			
<b>LIGHT FIXTURES</b>			
	SURFACE MOUNTED FIXTURE		STRIP FLUORESCENT FIXTURE
	EXIT SIGN WALL MOUNTED		TRACK LIGHTING
	2x4 EMERGENCY FIXTURE, PARABOLIC LENS		WALL MOUNTED FIXTURE, SCONCE
	2x2 EMERGENCY FIXTURE, PARABOLIC LENS		WALL MOUNTED FIXTURE, LINEAR
	2x4 LAY-IN FIXTURE, PARABOLIC LENS		POLE MOUNTED LIGHT FIXTURE
	2x2 LAY-IN FIXTURE, PARABOLIC LENS		2x4 EMERGENCY FIXTURE, ACRYLIC LENS
	2x4 LAY-IN FIXTURE, ACRYLIC LENS		POLE MOUNTED LIGHT FIXTURE
	2x2 LAY-IN FIXTURE, ACRYLIC LENS		EXIT SIGN CEILING MOUNTED
	2x2 LAY-IN FIXTURE, ACRYLIC LENS		RECESSED DOWN LIGHT - DIRECTIONAL
<b>MECHANICAL FIXTURES</b>			
	PENDANT MOUNTED FIXTURE		ACCESS PANEL
	CEILING FAN		RETURN AIR DIFFUSER
	2x2 EMERGENCY FIXTURE, ACRYLIC LENS		SUPPLY AIR DIFFUSER
	RECESSED DOWN LIGHT - ROUND		LINEAR SLOT DIFFUSER

PROJECT NUMBER: 20190109 PROJECT NAME: BARACK & MICHELLE OBAMA ACADEMY  
DATE: 03/18/2020 02:13:57 rvt  
3/17/2020 6:44:28 PM