

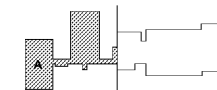


SCOPE DOCUMENTS

The Contract Documents Issued for [Conceptual Design, Schematic Design, Design Development, Partial Construction Documents or Other Issuance up to Issued for Construction] are intended to be at that level of development and as such, may be neither complete nor coordinated. The [Construction Manager, Contractor, Design/Builder] is responsible for complete and coordinated pricing [and execution] of the Work, and shall include items necessary for the proper execution and completion of the Work, as shown, specified, reasonably inferred or required for a complete Project. For Work of obligated design, systems, assemblies, components and materials shall comply with national, state and local code requirements. The [Construction Manager, Contractor, Design/Builder] shall inform the Owner and Architect, in timely fashion, of any discovered omissions, inconsistencies or errors in the Contract Documents.

ISSUANCES		
No.	Drawing Issue Description	Date
1	DESIGN DEVELOPMENT	3/18/20

GADOE CODE: 5066
FTE - 450
EXISTING IU - 38
PROPOSED IU - 33



BARACK & MICHELLE OBAMA ACADEMY

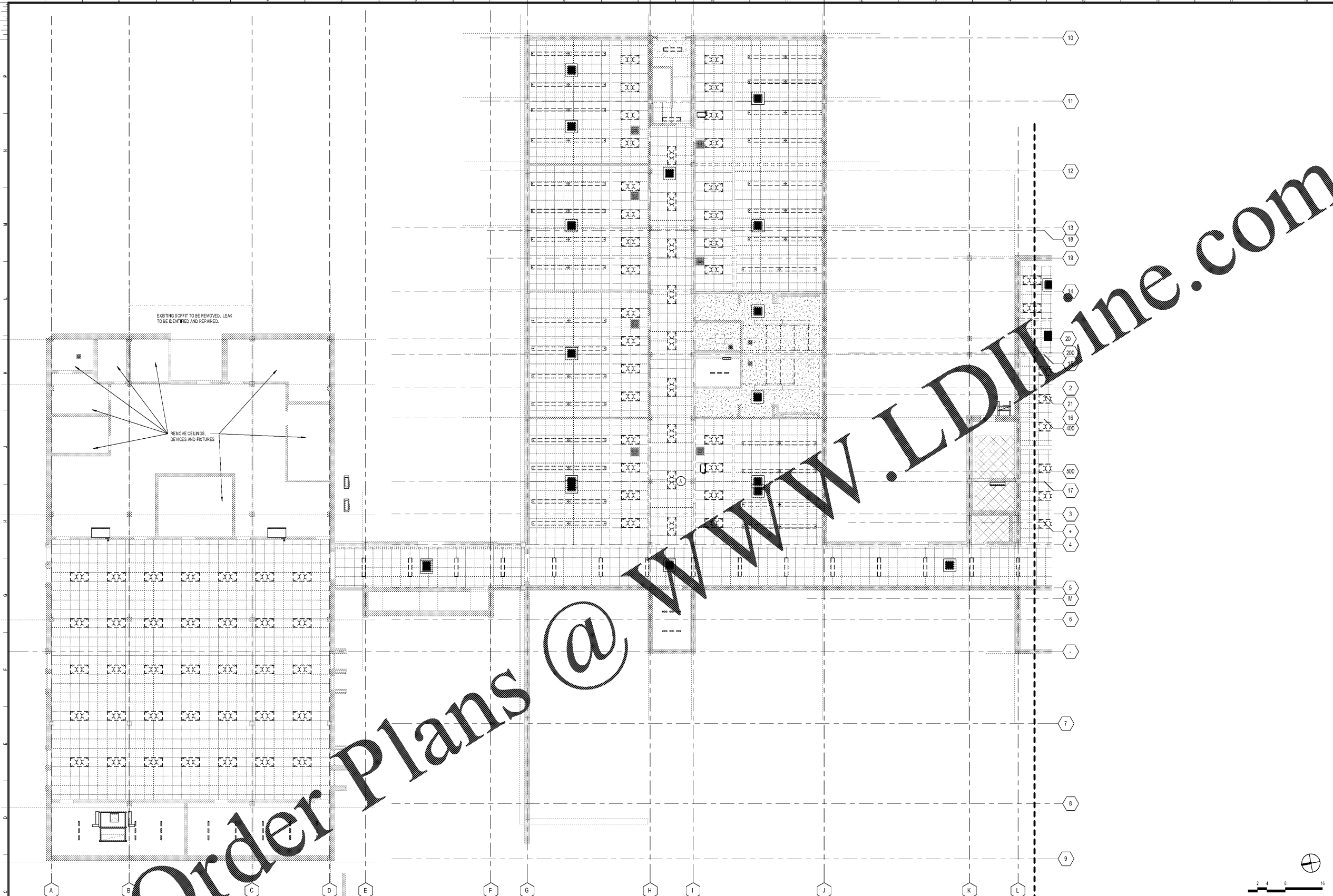


970 Martin St SE, Atlanta, GA 30315
ATLANTA PUBLIC SCHOOLS

**1ST FLOOR DEMOLITION
REFLECTED CEILING PLAN -
AREA A**

Principal Architect: ROBERT A. JUST	Project No.: 20190109
Project Manager: S. TARRIHAN	Date: 03/18/20
Project Architect: B. FERREN	
Staff Architect: G. HAHN / V. MOGWANJA	
Interior Design: B. FERREN / G. HAHN	

A1.58



RCP LEGEND		
LIGHT FIXTURES		
	SURFACE MOUNTED FIXTURE	
	EXIT SIGN WALL MOUNTED	
	2x4 EMERGENCY FIXTURE, PARABOLIC LENS	
	2x2 EMERGENCY FIXTURE, PARABOLIC LENS	
	2x4 LAY-IN FIXTURE, PARABOLIC LENS	
	2x2 LAY-IN FIXTURE, PARABOLIC LENS	
	2x4 LAY-IN FIXTURE, ACRYLIC LENS	
	2x2 LAY-IN FIXTURE, ACRYLIC LENS	
MECHANICAL FIXTURES		

1ST FLOOR DEMOLISHED REFLECTED CEILING
PLAN - AREA A
SCALE: 1/8" = 1'-0"

PROJECT NUMBER: 20190109 PROJECT NAME: BARACK & MICHELLE OBAMA ACADEMY
DATE: 03/18/20 02:13:57 PWT
3/17/2020 6:44:07 PM
DRAWING NO: 00119 COOPER CARRY
DRAWING TITLE: REFLECTED CEILING PLAN - AREA A
DESIGNED BY: S. TARRIHAN
CHECKED BY: B. FERREN
DATE: 03/18/20

Order Plans @ WWW.LDLINE.COM