

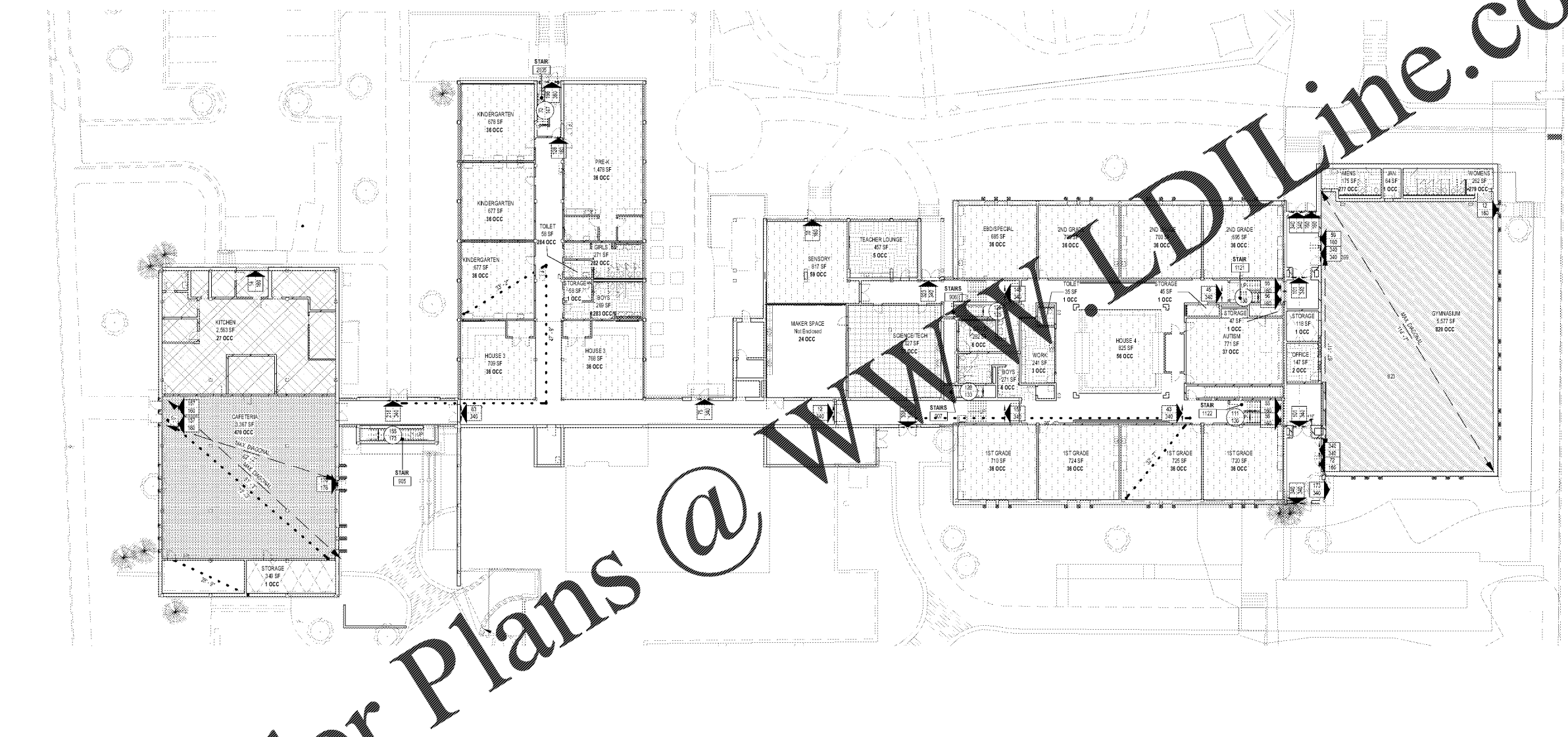


COOPER CARRY
THE CENTER FOR CONNECTIVE ARCHITECTURE

191 Peachtree Street NE
Suite 2400
Atlanta, GA 30303-1770
(404) 237-2000
coopercarry.com

MEANS OF EGRESS OCCUPANCY LEGEND

- ASSEMBLY - NO FIXED SEATS
CONCENTRATED CHAIRS
ONLY
- ASSEMBLY - NO FIXED SEATS
& CHAIRS
- BUSINESS
- EDUCATIONAL - CLASSROOM
- EDUCATIONAL - SHOPS /
VOCATIONAL AREAS
- KITCHENS - COMMERCIAL
- STORAGE (OTHER THAN
MERCANTILE)



1 LEVEL 1 LIFE SAFETY - NEW
SCALE: 1/16" = 1'-0"

Order Plans @ WWW.LDILine.com

MEANS OF EGRESS LEGEND

WALL RATINGS

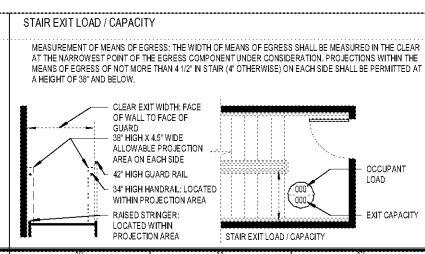
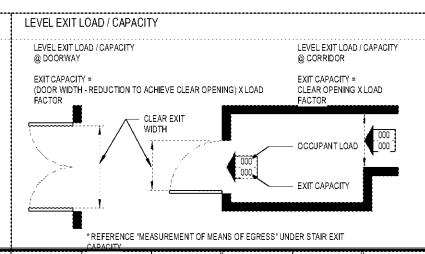
1 HOUR SEPARATION ASSEMBLY OR FIRE PARTITION	
2 HOUR SEPARATION ASSEMBLY OR FIRE PARTITION	
3 HOUR SEPARATION ASSEMBLY OR FIRE PARTITION	
4 HOUR SEPARATION ASSEMBLY OR FIRE PARTITION	
SMOKE SEPARATION ASSEMBLY	

OCCUPANCY AREA LABELS

AREA NAME	100 SF
-----------	--------

DISTANCES

COMMON PATH OF TRAVEL (MAX. FT. MAX)	0'-1"
DEAD END CORRIDOR (MAX. FT. MAX)	0'-3"
TRAVEL DISTANCE	0'-3"
MAX. DIAGONAL DISTANCE	0'-1"
EXIT SEPARATION	0'-3"



EXIT CAPACITY:
(SEE TABLE 1005.1 OR USC TABLE 733.3.1)

STAIR EXITS	EGRESS WIDTH (inches per occupant)	STAIR CAPACITY (P. 30)	DOOR CAPACITY (P. 30)	GOVERNING CAPACITY	OCCUPANT LOAD @ STAIR EXIT
STAR NO. 1121	100	320	111	111	111
STAR NO. 1122	130	320	111	111	111
STAR NO. 309	125	340	125	125	125
STAR NO. 307	133	340	128	128	128
STAR NO. 2105	147	360	196	196	196
STAR NO. 305	155	340	218	218	218

LEVEL EXITS:
EGRESS WIDTH (inches per occupant)

DOOR CAPACITY (P. 30)	OCCUPANT LOAD @ LEVEL EXIT
977	977

TOTAL EXIT CAPACITY FOR FLOOR:

SCOPE DOCUMENTS

The Contract Documents Issued for [Conceptual Design, Schematic Design, Design Development, Partial Construction Documents or Other Issuance up to Issued for Construction] are intended to be at that level of development and as such, may be neither complete nor coordinated. The [Construction Manager, Contractor, Design/Builder] is responsible for complete and coordinated pricing [and execution] of the Work, and shall include items necessary for the proper execution and completion of the Work, as shown, specified, reasonably inferred or required for a complete Project. For Work of obligated design, systems, assemblies, components and materials shall comply with national, state and local code requirements. The [Construction Manager, Contractor, Design/Builder] shall inform the Owner and Architect, in timely fashion, of any discovered omissions, inaccuracies or errors in the Contract Documents.

ISSUANCES

No.	Drawing Issue Description	Date
1	DESIGN DEVELOPMENT	3/18/20

GADOE CODE: 5066
FTE - 450
EXISTING IU - 38
PROPOSED IU - 33

BARACK & MICHELLE OBAMA ACADEMY



970 Martin St SE, Atlanta, GA 30315
ATLANTA PUBLIC SCHOOLS

MEANS OF EGRESS PLAN - 1ST FLOOR

ROBERT A. JUST	20190109
Principal/Designer	Project No.
S. TARRIGHAN	03/18/20
Project Manager	Date
B. FERREN	
Staff Architect	
E. SAADAT	
Staff Architect	
B. FERREN / G. HAHN	
Interior Design	

G1.20

NOT ISSUED FOR CONSTRUCTION

PROJECT NUMBER: 20190109 PROJECT NAME: BARACK & MICHELLE OBAMA ACADEMY
DATE: 02/13/20 FILE NAME: 20190109 BARACK & MICHELLE OBAMA ACADEMY - 1ST FLOOR MEANS OF EGRESS PLAN - 1ST FLOOR
3/17/2020 6:51:50 PM